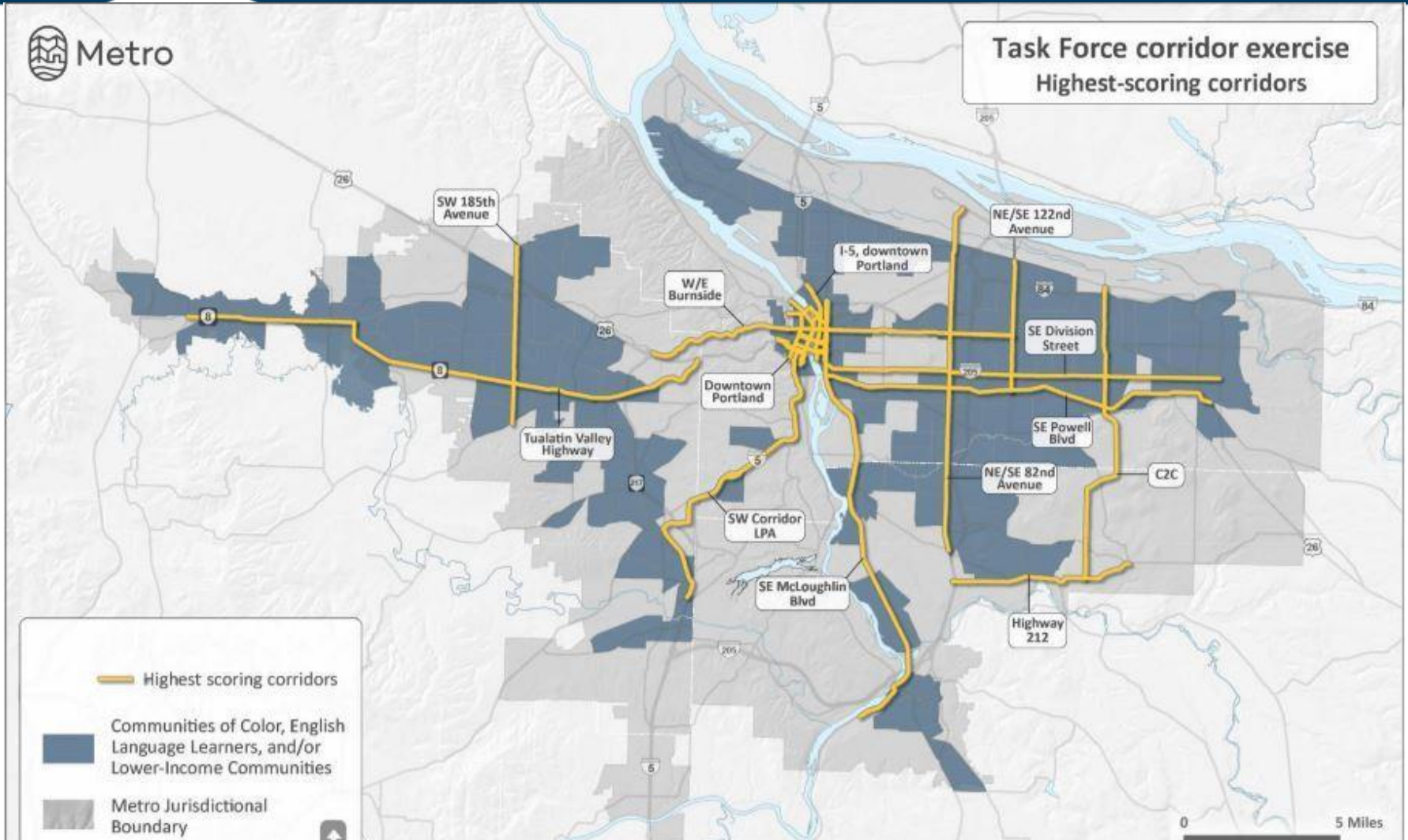




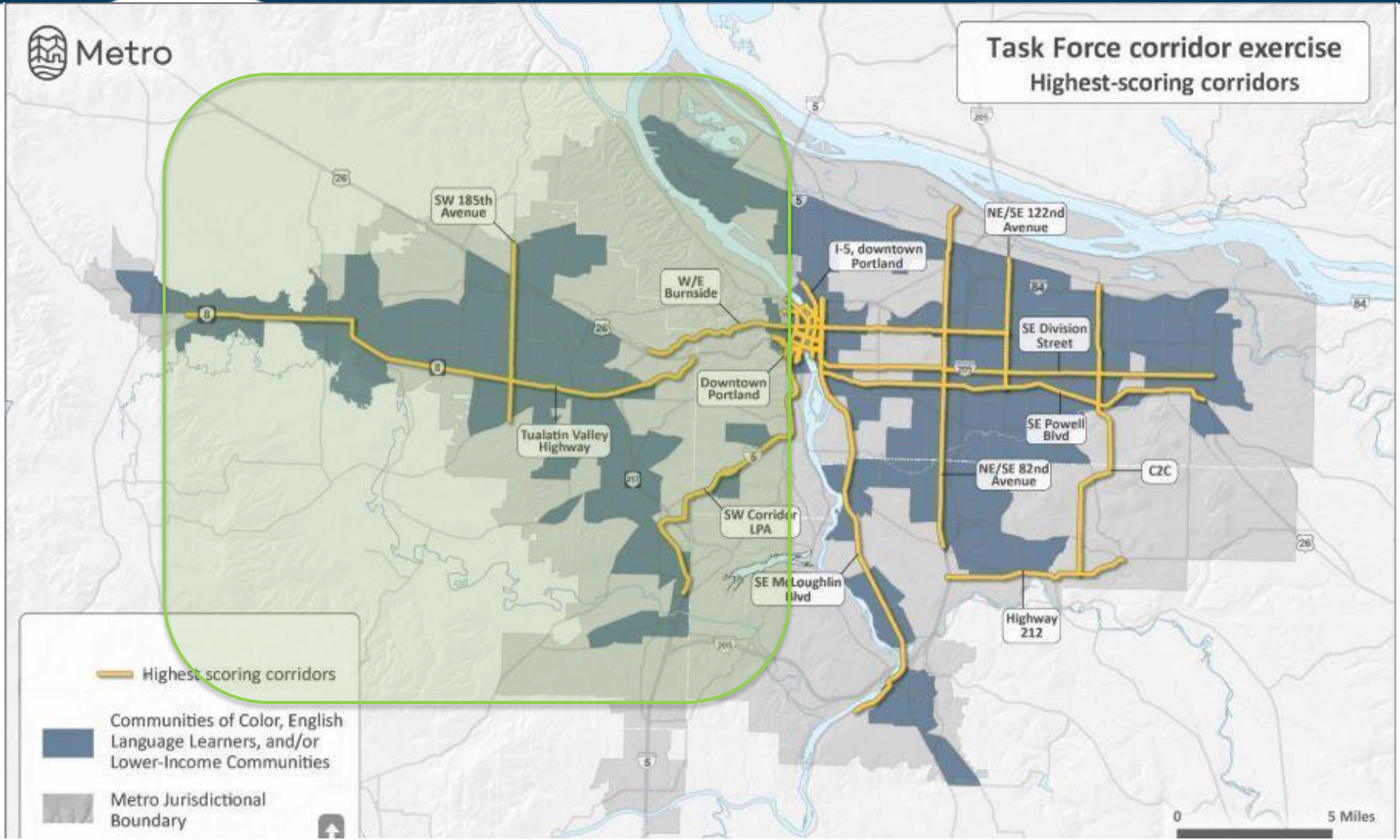
Local Investment Team (LIT) Corridor Tours: Burnside

Washington County
August 5, 2019

Task Force Corridors of Interest



Local Investment Team – Washington County



Burnside Street/Barnes Road

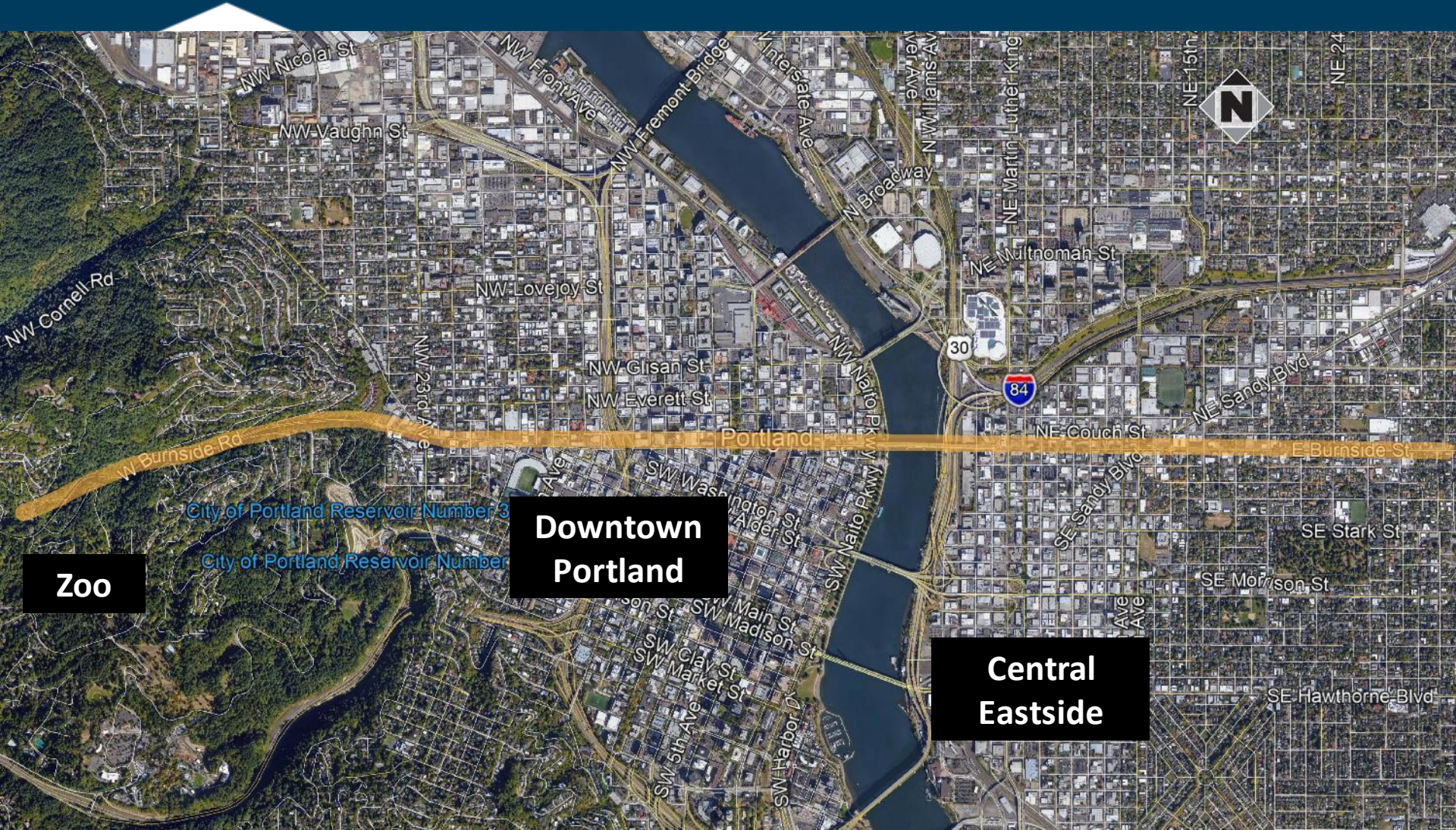
Presentation Outline

- Corridor overview
 - Regional, local, safety
- Projects/opportunities
- Tour follow-up

Burnside Street/Barnes Road (Sunset Transit Center to Downtown)



Burnside Street (Western Portion) (Downtown to Central Eastside)

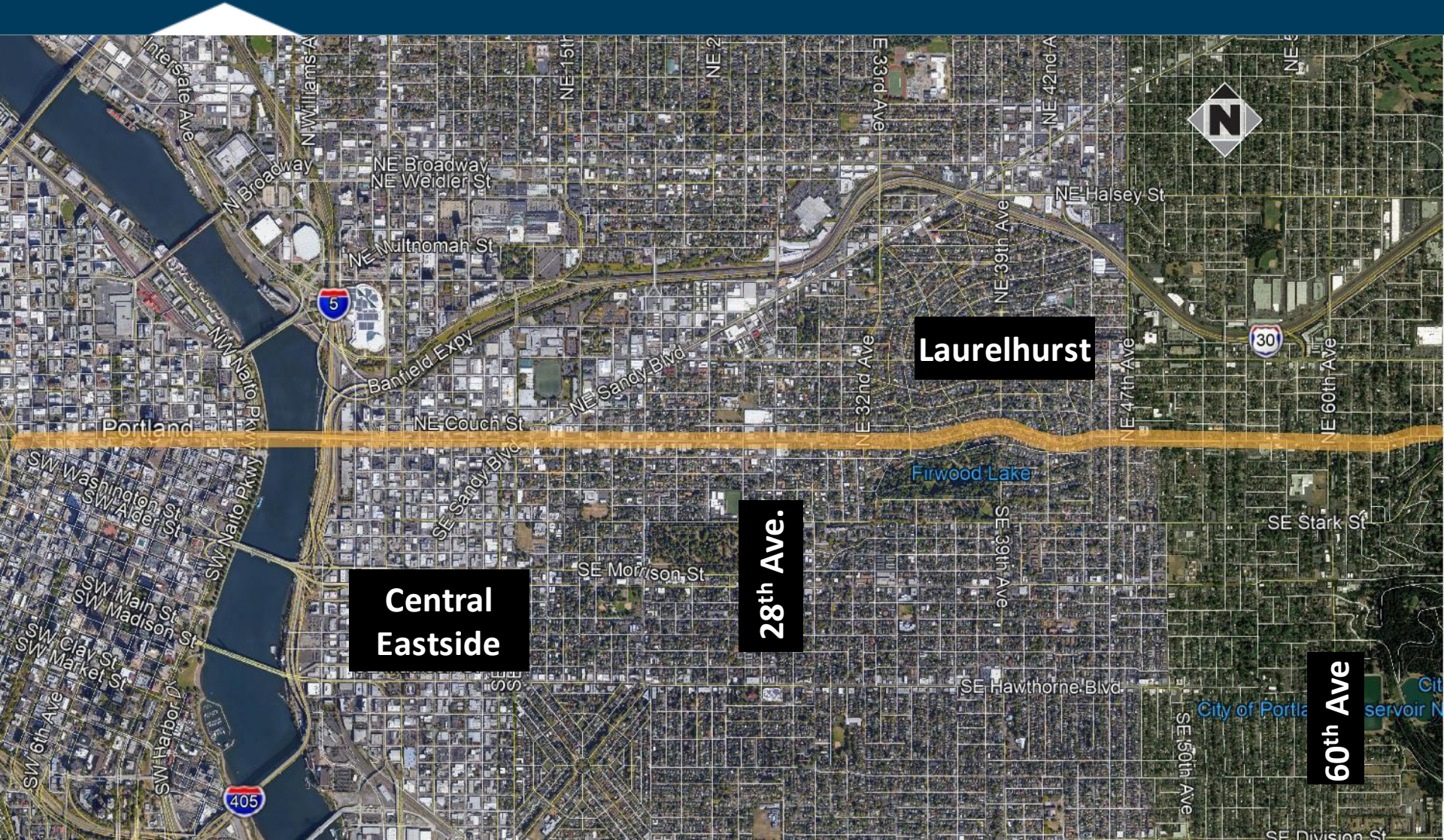


Zoo

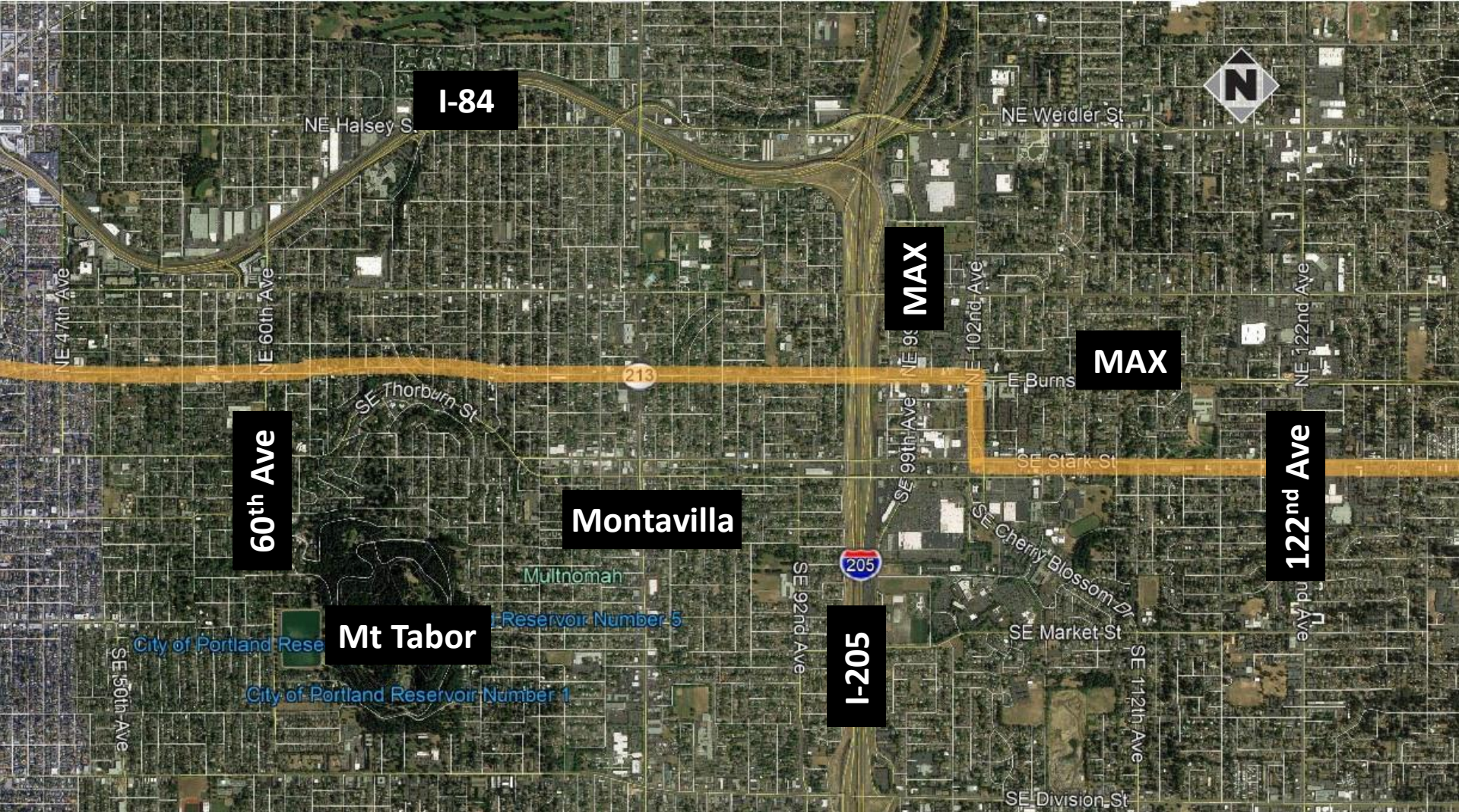
Downtown
Portland

Central
Eastside

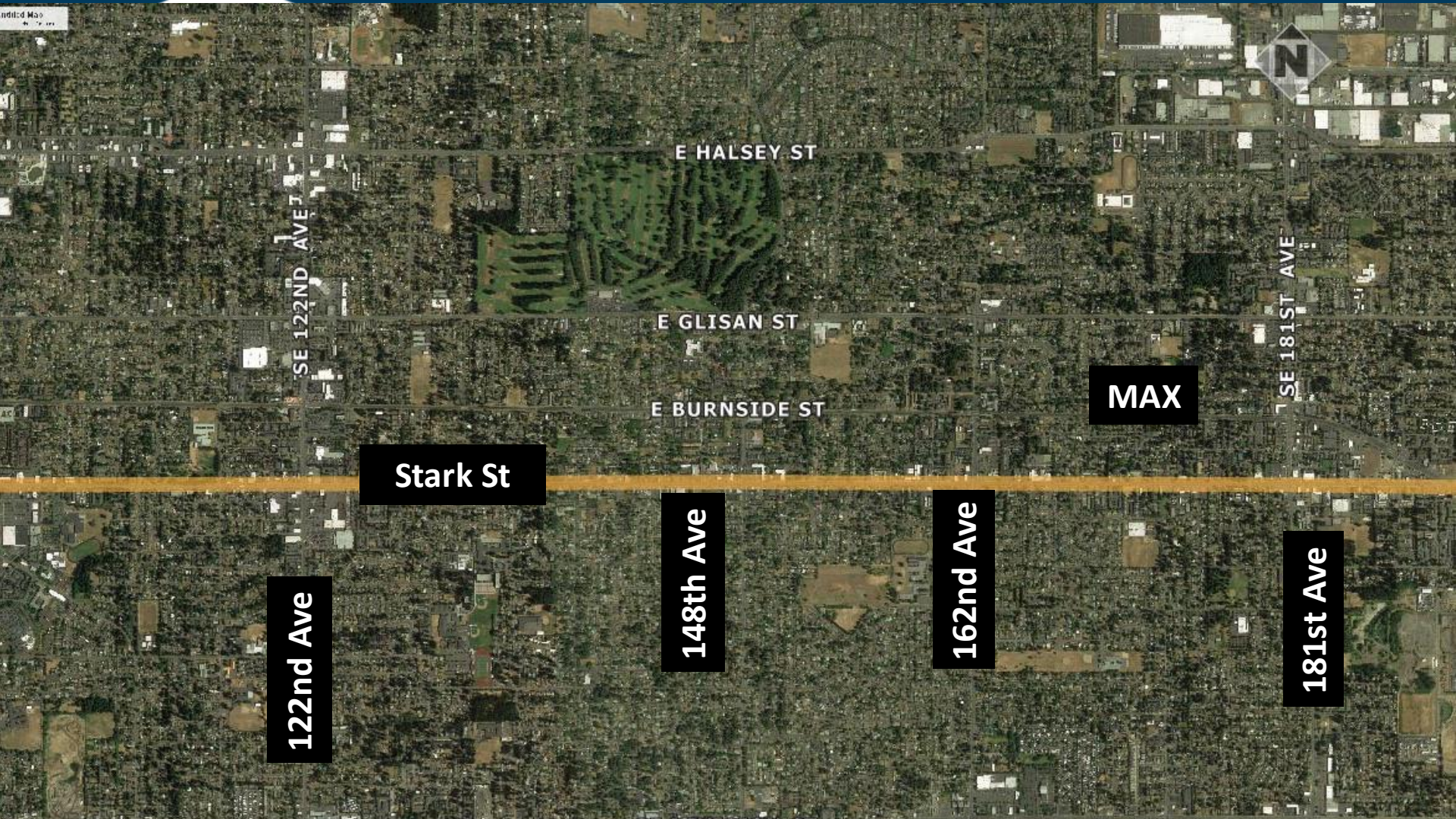
Burnside Street (Central Eastside to 60th Ave)



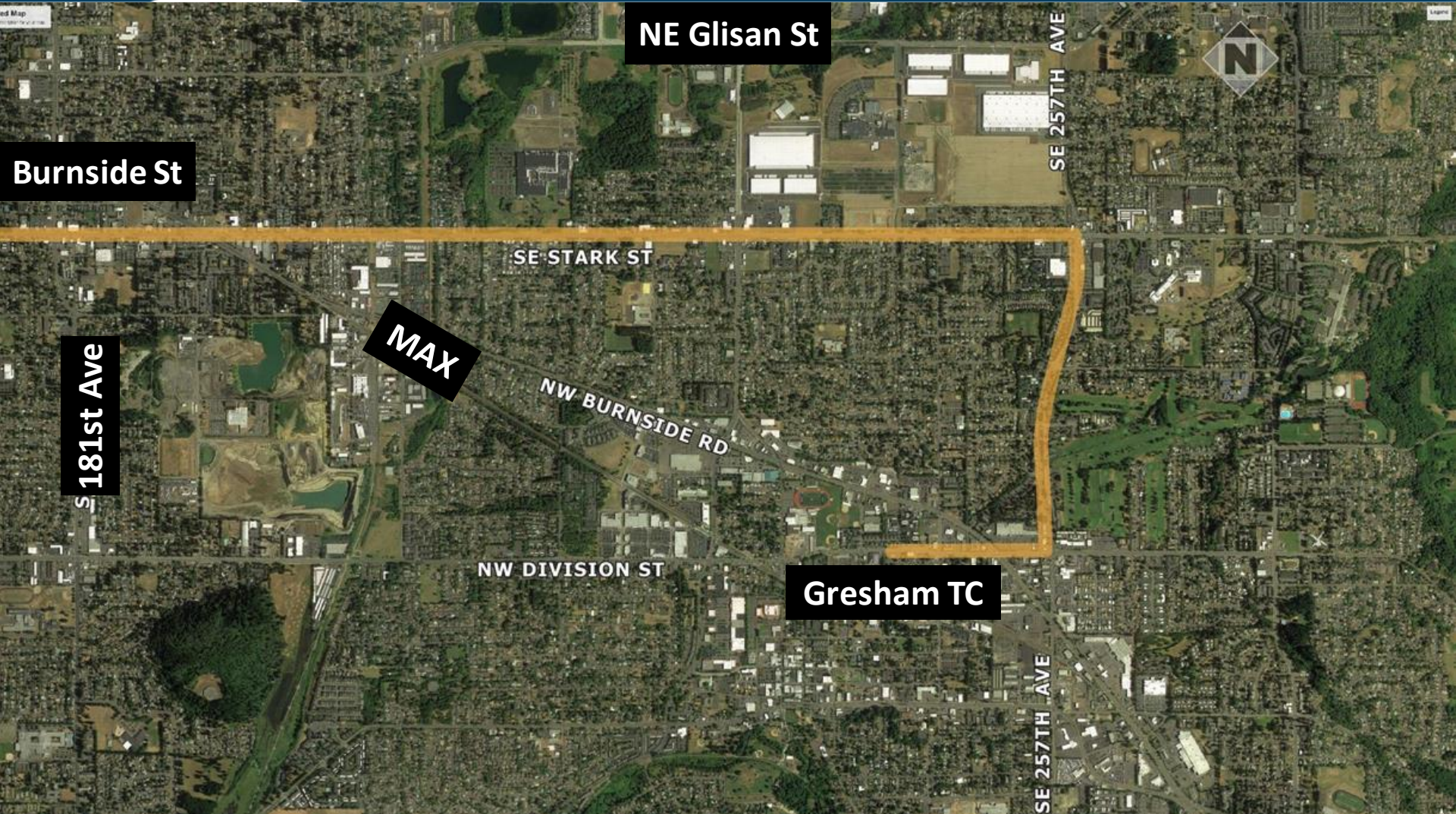
Burnside Street (60th Ave to 122nd Ave)



Burnside Street/Stark Street (122nd Ave to 181st Ave)



Burnside Street/Stark Street (181st Ave to Gresham Transit Center)



Regional Role:

- Connects Washington County and East Multnomah County through downtown Portland.
- “Emergency lifeline” route, aids emergency vehicles during disaster recovery efforts.
- Identified by TriMet as a key corridor to increase transit ridership.

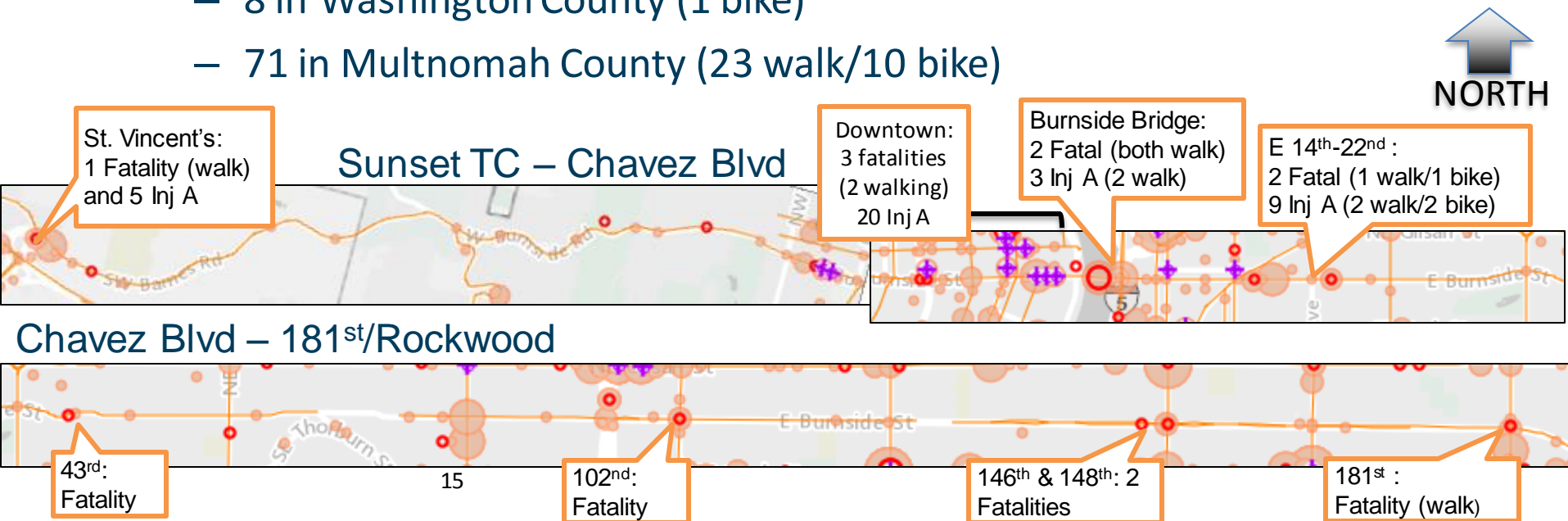
Local Role:

- Barnes Road portion serves Medical Center and Sunset Transit Center.
- Supports TriMet line 20 and many others through downtown Portland.
- Critical Willamette River crossing for all users
- Main street for numerous formal and informal commercial centers
- Connections to MAX and Gresham Transit facilities

Safety: Barnes/Burnside (Sunset TC to 181st)



- **14 Fatalities** including 8 walking and 1 biking
 - 1 in Washington County (walk)
 - 13 in Multnomah County (7 walk/1 bike)
- **79 Serious injuries** including 23 walking and 11 biking
 - 8 in Washington County (1 bike)
 - 71 in Multnomah County (23 walk/10 bike)



Presentation Outline

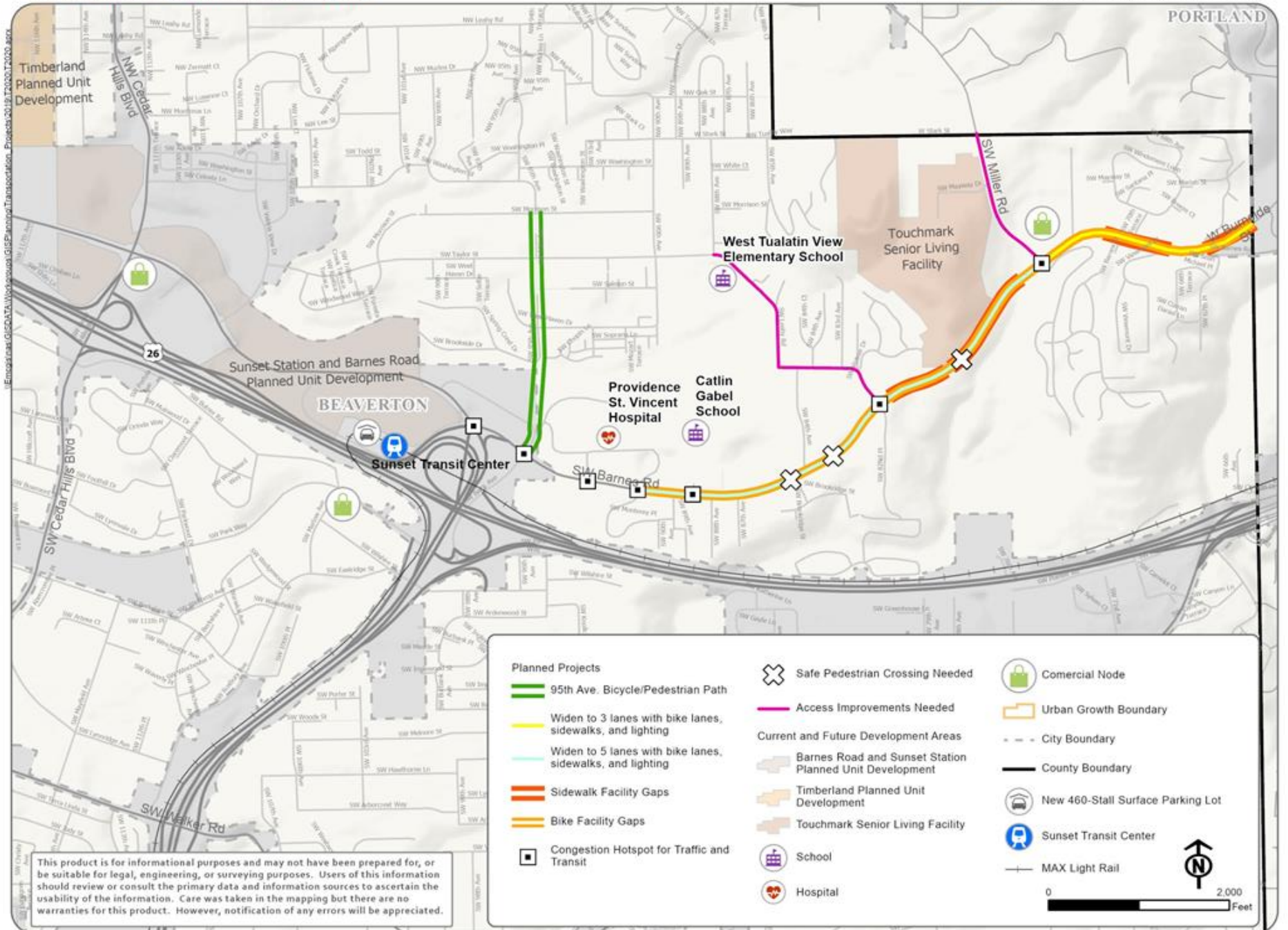
- Corridor overview
 - Regional, local, safety
- **Projects/opportunities**
- Tour follow-up

Regional Transportation Plan Projects:

- Earthquake Ready Burnside Bridge
- Burnside/Skyline intersection improvements
- Barnes road improvements – widen to 3-5 lanes with bicycle lanes and sidewalks
- Inner W/E Burnside Boulevard and pedestrian/bicycle safety improvements
- Hogan/Powell/Burnside 'triangle' - Improve safety and mobility
- Enhanced Transit Corridor (ETC) on E Burnside/SE Stark

Current Local Opportunities: Barnes Rd Sunset Transit Center – County line

- Widen to four/five lanes from St. Vincent Hospital to Miller Road as a complete street with eastbound buffered bicycle lanes, westbound standard bike lanes, wider sidewalks, up to three protected mid-block crossings, intelligent signals and lighting. **\$25-30M**
- Add eastbound buffered bicycle lanes, standard bicycle lanes westbound, sidewalks and lighting from Miller Road to County Line. **\$7-10M**
- 95th Ave pedestrian/bicycle trail to Barnes Road and Sunset Transit Center (access to transit) **\$10M**
- ETC improvements for line 20: TSP in Washington County and opportunities to improve transit reliability **\$175M**



This product is for informational purposes and may not have been prepared for, or be suitable for legal, engineering, or surveying purposes. Users of this information should review or consult the primary data and information sources to ascertain the usability of the information. Care was taken in the mapping but there are no warranties for this product. However, notification of any errors will be appreciated.



Pedestrian Crossing Treatments

- Rectangular rapid-flash beacon (RRFB)



Pedestrian Crossing Treatments

- Pedestrian hybrid beacon (PHB)

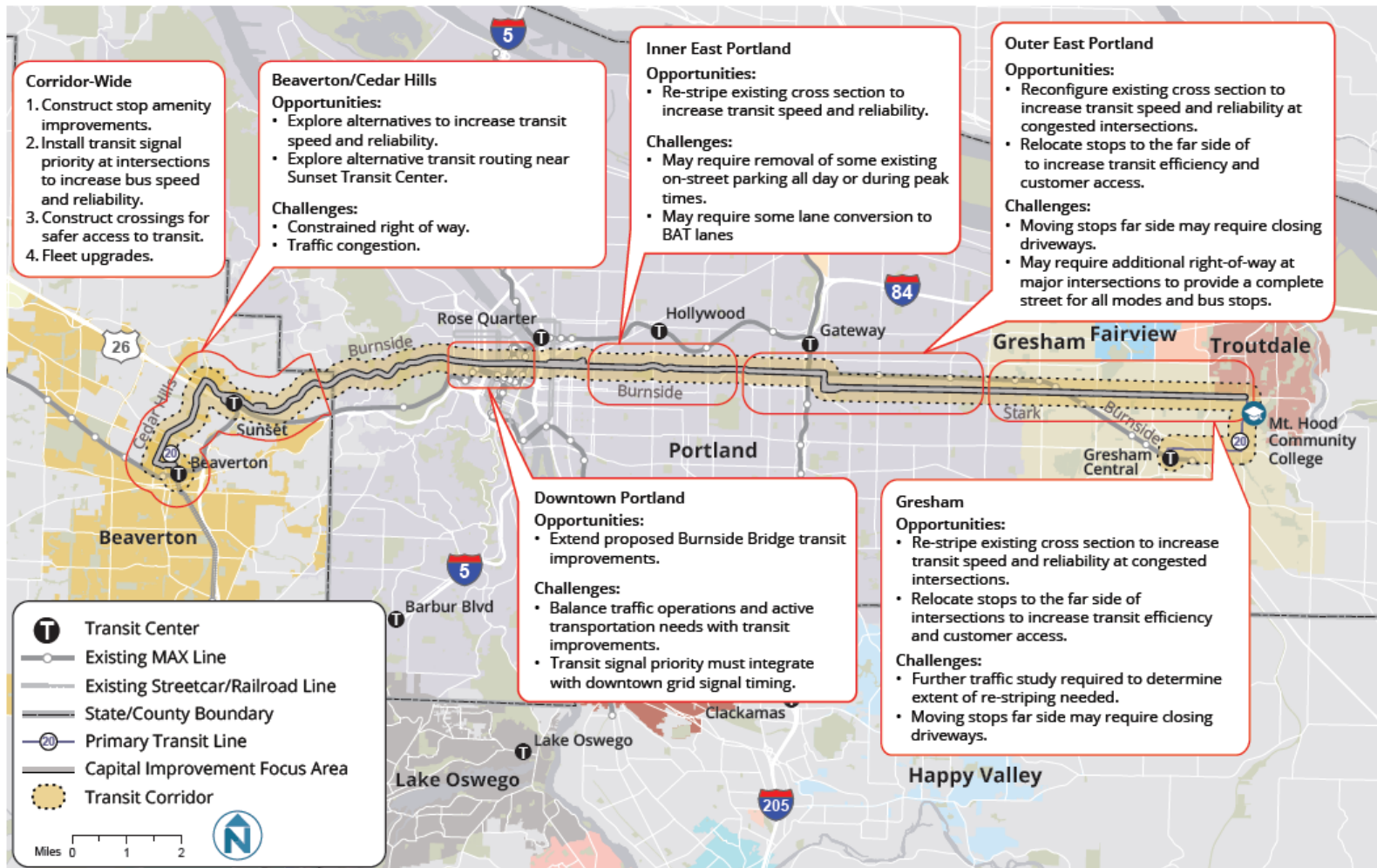


Pedestrian Crossing Treatments

- Half-signal or midblock signal



Enhanced Transit Corridor



Better Bus Stops example

- Separate bicycle/bus movement
- Provide comfortable place to wait
- Enhanced crossings
- Could include shelters
- Other options and elements, too.



Example location: Halsey and Weidler

Figure source: City of Portland

Earthquake Ready Burnside Bridge

- **Improves Safety** by creating a seismically resilient downtown bridge that will remain fully operational and accessible for all modes immediately following a major earthquake
- **Supports Resiliency** by aiding rapid and reliable emergency response, rescue and evacuation, as well as post-earthquake economic recovery.
- **Makes It Easier to Get Around** by providing a long-term, low-maintenance and safe crossing for all users.



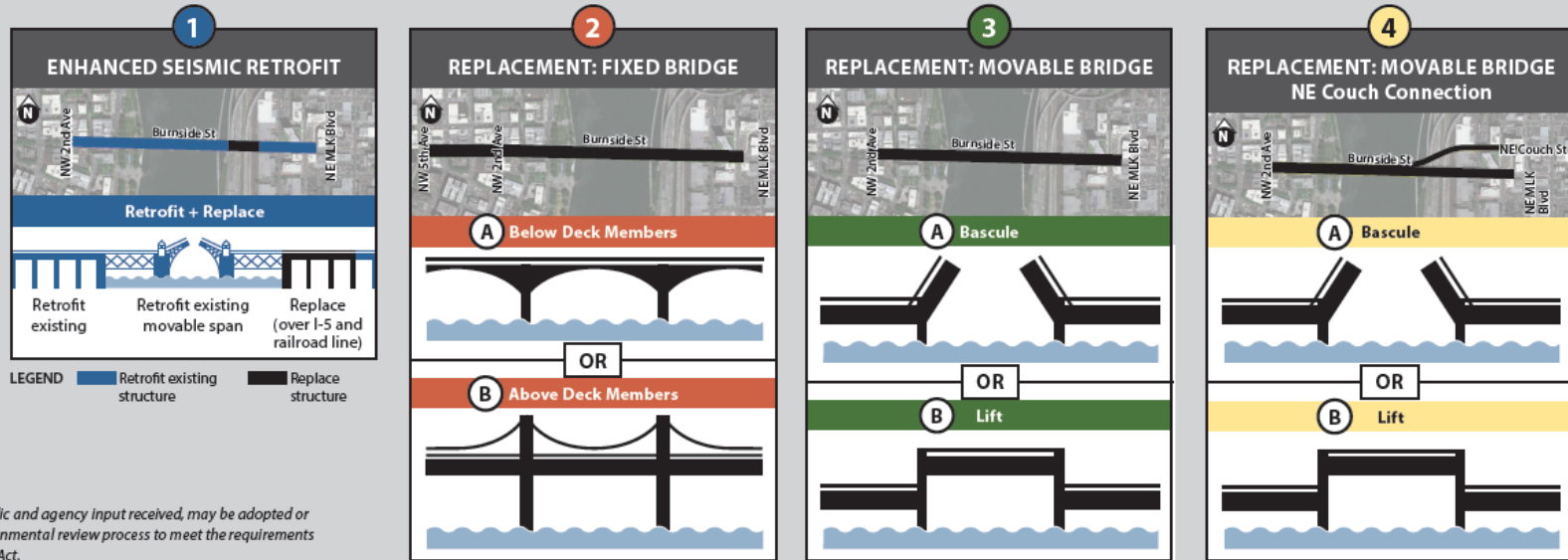
Figure source: www.burnsidebridge.org

Earthquake Ready Burnside Bridge

See handout

Alternatives with options under evaluation

Four alternatives with multiple options are being studied further as part of the Environmental Review phase of the Earthquake Ready Burnside Bridge project, each with distinct characteristics to consider and evaluate. A no-build alternative will also be evaluated.



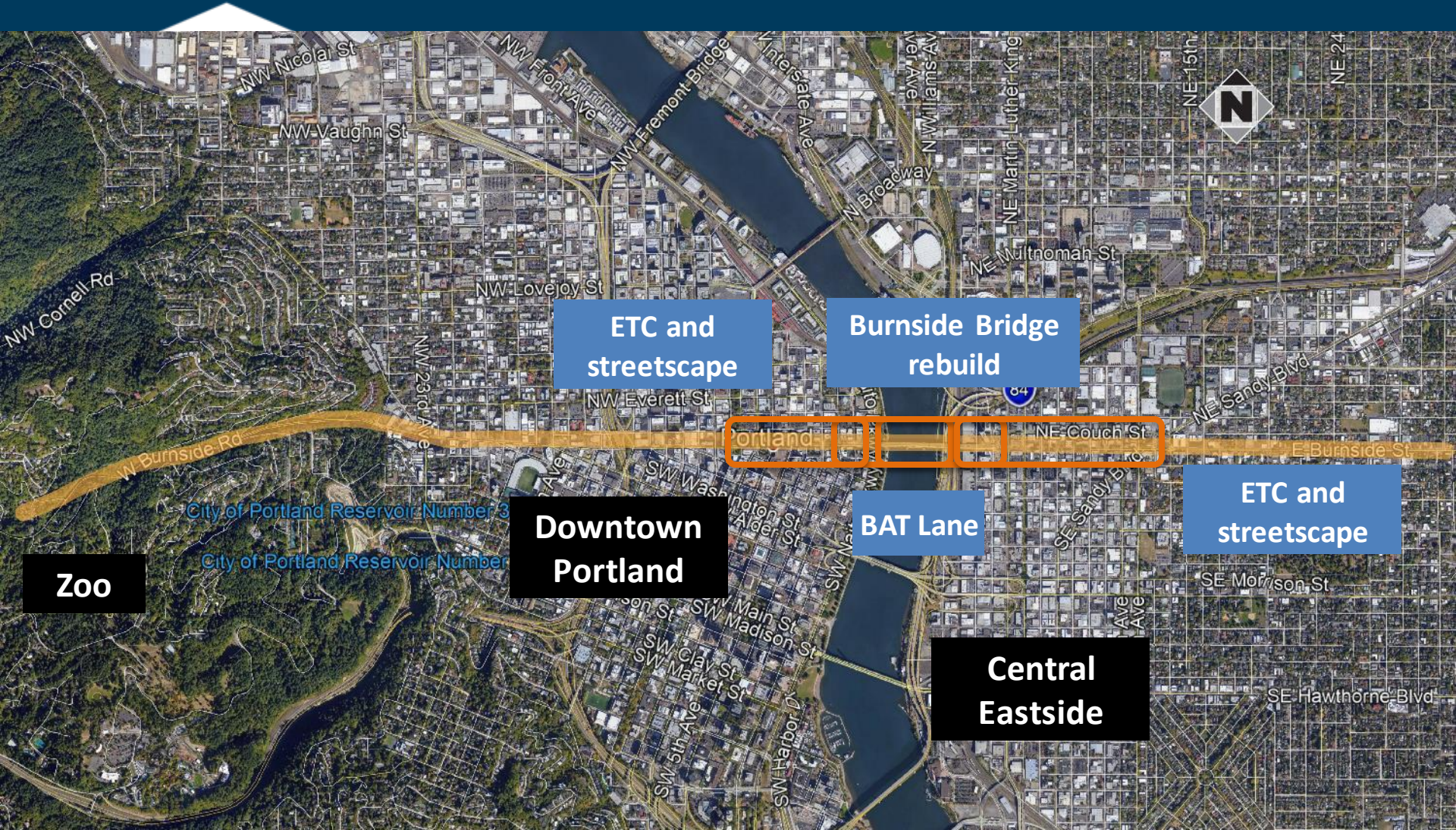
Alternative illustrations are not to scale and are for bridge type illustration purposes only.

The information presented here, and the public and agency input received, may be adopted or incorporated by reference into a future environmental review process to meet the requirements of the federal National Environmental Policy Act.

Burnside Street/Barnes Road (Sunset Transit Center to Downtown)



Burnside Street (Western Portion) (Downtown to Central Eastside)



Zoo

Downtown
Portland

Central
Eastside

ETC and
streetscape

Burnside Bridge
rebuild

BAT Lane

ETC and
streetscape

Identified Issues and Opportunities:

- Washington County
 - High transit ridership potential
 - High safety need
- Multnomah County
 - High transit ridership
 - The Burnside Bridge is seismically inadequate.
 - Burnside is a high crash corridor.
 - High safety need.
 - Diverse range of adjacent land uses.

Other Projects or Opportunities?

Presentation Outline

- Corridor overview
 - Regional, local, safety
- Projects/opportunities
- Tour follow-up

Key Questions and Considerations

- What else did you notice on the tour?
- What do you think about:
 - Access to Sunset Transit Center and Line 20?
 - Adding transit signal priority at key intersections?
 - Widening to 4-5 lanes to Miller Road with eastbound buffered bike lanes, westbound standard bike lanes, wider sidewalks, mid-block crossings, intelligent signals, and lighting?
 - Adding eastbound buffered bike lanes and westbound standard bike lanes, sidewalks, and lighting from Miller Road to the County Line?
 - Earthquake ready Burnside Bridge?

#getmoving2020

getmoving2020.org

