

# Task Force agenda: Feb. 19, 2020

Public comment

Quick staff updates

Tier 2 corridor  
proposal  
presentations

- Highway 43
- Highway 217
- Highway 99W
- Sunset Corridor <sup>2</sup>





Up to 30 minutes is available for verbal public comment, from up to 15 speakers.  
If more than 15 people have signed up, a lottery will identify speakers.  
Verbal comments will be limited to 1 minute 45 seconds.

Please submit written comments at  
**getmoving@**  
**oregonmetro.gov**

Comments submitted by 2 p.m. on the day of a Task Force meeting will be printed for that meeting's packet.





# Quick updates





# About Tier 2 corridors

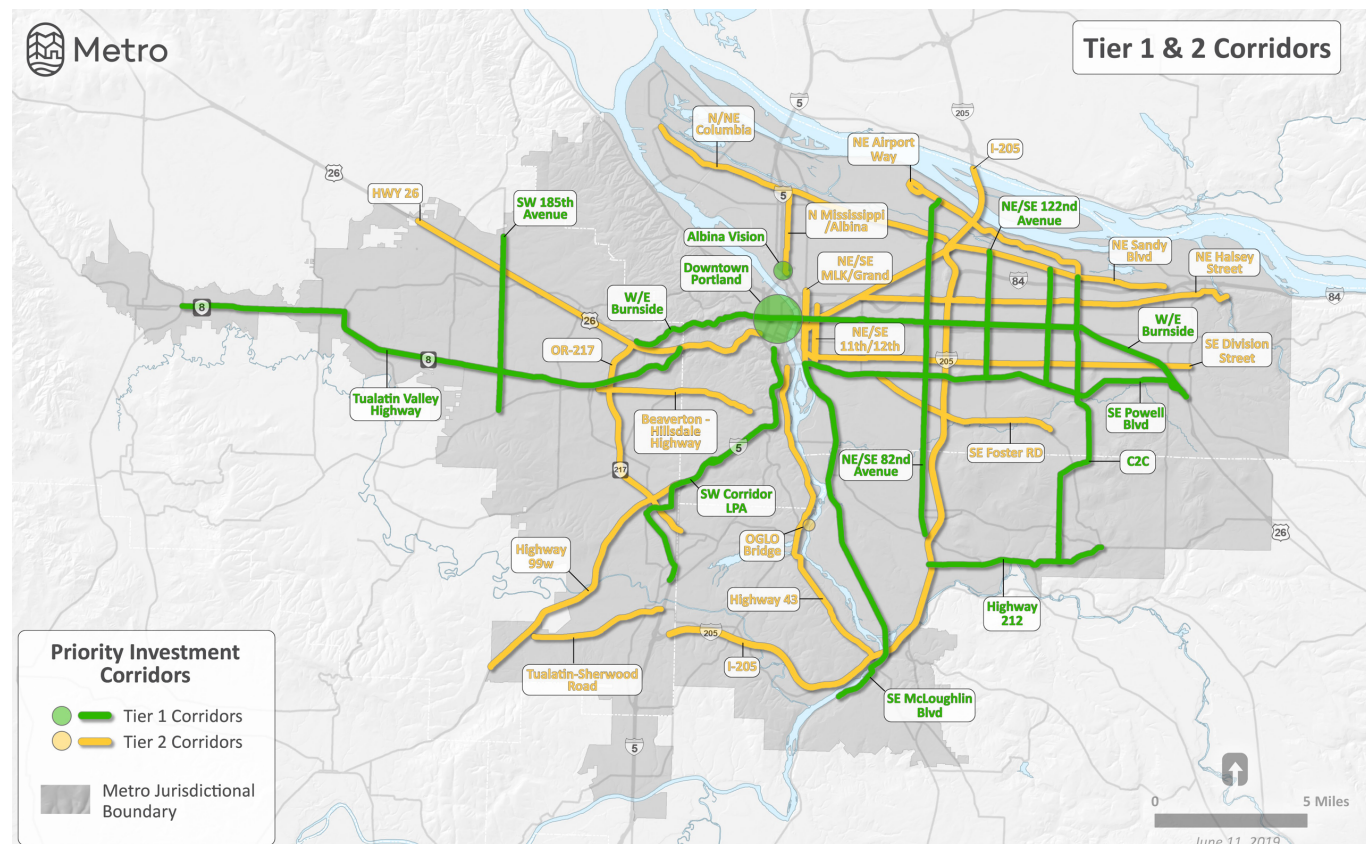
Designated by  
Metro Council,  
June 2019

Additional to Tier 1  
& Program funding

Local jurisdiction  
proposal process

**Four jurisdiction  
proposals:**

43, 217, 99W,  
Sunset





# Jurisdiction Proposals: Presentations

5-minute presentations

Questions from Task Force: Verbal and written

Task Force members may also email questions to Craig Beebe by Friday

Jurisdictions will respond in writing



# **Tier 2 Corridors Jurisdiction Proposal Slides**

Highway 43 Bike/Ped Improvements

Highway 217

Highway 99W Corridor Study

Sunset Highway Corridor Study

*Presented to the Transportation Funding Task Force  
Feb. 19, 2020*



# West Linn Highway 43 Bike/Ped Improvements:

# Turning an ODOT Highway into a *Complete Street* for Travelers of All Ages, Abilities, Backgrounds and Income Levels



CITY OF  
West Linn



# Current: Unsafe conditions

- More than 21,000 vehicles/day
- Significant connection to transit centers in Oregon City & Lake Oswego, but limited access
- No improvements for decades
  - Intermittent or substandard sidewalks
  - Inadequate pedestrian crossings
  - Missing left-turn bays
  - Isolated transit stops disconnected from surrounding neighborhoods



# Future: Extended safe active transportation network in the east Metro area

- Full sidewalks & separated bike paths on both sides of the road
- Prioritized transit with bus pull-outs; easier access for all
- Improved intersection safety
- ADA accessibility
- Open bike, pedestrian and transit use in West Linn
- Safer active transportation connections through West Linn to Oregon City, Lake Oswego, Portland and other destinations
- Could be completed fairly quickly – advanced design work underway





# Supports Metro 2020 Desired Outcomes

- ✓ **Improves Safety** – Creates opportunities for bike/ped travel outside the flow of vehicular traffic; improves safety at key intersections and transit stops
- ✓ **Prioritizes Support for Communities of Color** – Safe walking and biking facilities for users of all ages, backgrounds, abilities and income levels; improves access to transit
- ✓ **Reduces Congestion** – Improves bike/ped connections; reduces need for vehicular travel; prioritizes transit
- ✓ **Increases Access** – More connections to surrounding neighborhoods; easier access for people of all abilities & income levels to jobs, health services, education, groceries, etc.
- ✓ **Supports Resiliency** – More opportunities for & access to healthy, safe and climate-friendly modes of travel
- ✓ **Supports Connectivity** – Creates important bike/ped connections across barriers to support active transportation options for West Linn, Lake Oswego, Oregon City and the entire metro region
- ✓ **Protects Clean Area and Reduces Carbon Emissions** – Converts hundreds of auto trips into bike and walk trips each day, reducing carbon emissions and increasing community health
- ✓ **Regional In Nature** – Benefits the region by creating bike/ped connections in West Linn, an area with a lack of connectivity; supported by ODOT, TriMet, West Linn, Lake Oswego, Clackamas County
- ✓ **Leverages Housing, Open Space Investments** – Open access to resources and increase the number of community members who can benefit; build on improvements already underway by West Linn & region

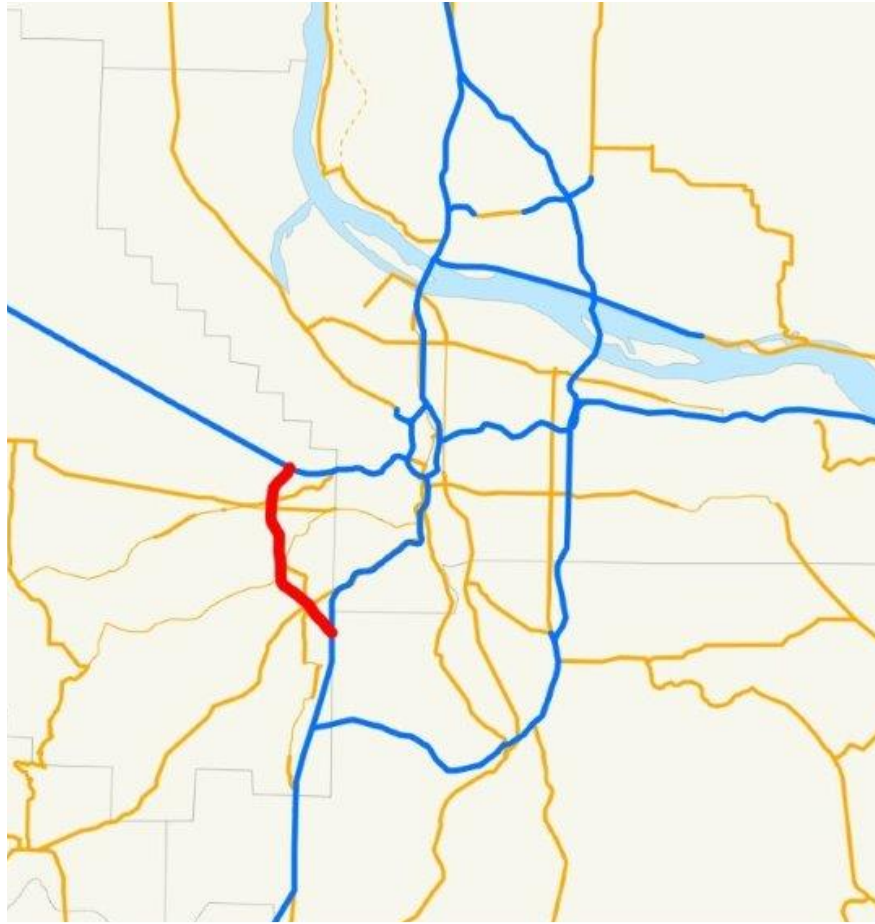
# Estimated project cost\*

- Construction: \$45.5 million
- Design engineering: \$ 8.3 million
- Construction administration: \$ 6.3 million
- Right of way: \$ 5.7 million
- Lake Oswego study: \$ 0.3 million

*\*Based on ODOT's federal aid cost estimate.  
With T2020 funds and the City of West Linn  
as lead agency, the cost could be greatly reduced.*

**Total: \$66.1 million**





**Hwy 217 Corridor**





# Proposed investment supports Task Force values

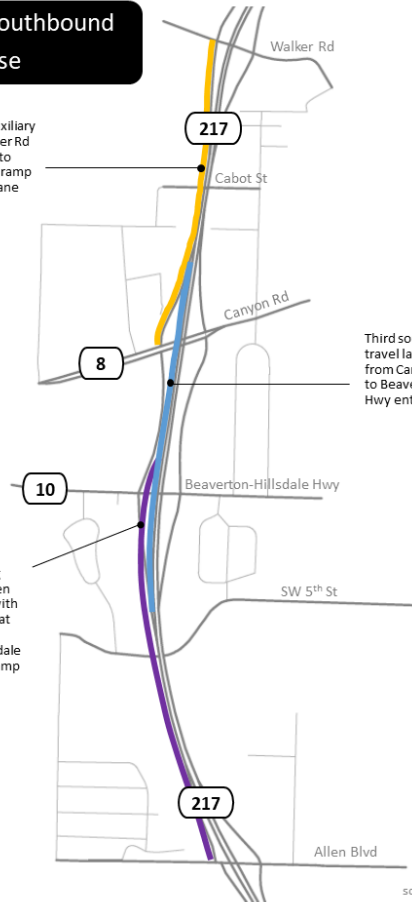
- Improves safety
- Improves reliability
- Relieves congestion

## OR 217 Southbound Next Phase

Southbound auxiliary lane from Walker Rd entrance ramp to Canyon Rd exit ramp to maintain 2-lane Canyon Rd exit

Third southbound travel lane extension from Canyon Rd exit to Beaverton-Hillsdale Hwy entrance

Braided ramps: Replace existing southbound Allen Blvd exit ramp with braided ramp that travels over the Beaverton-Hillsdale Hwy entrance ramp



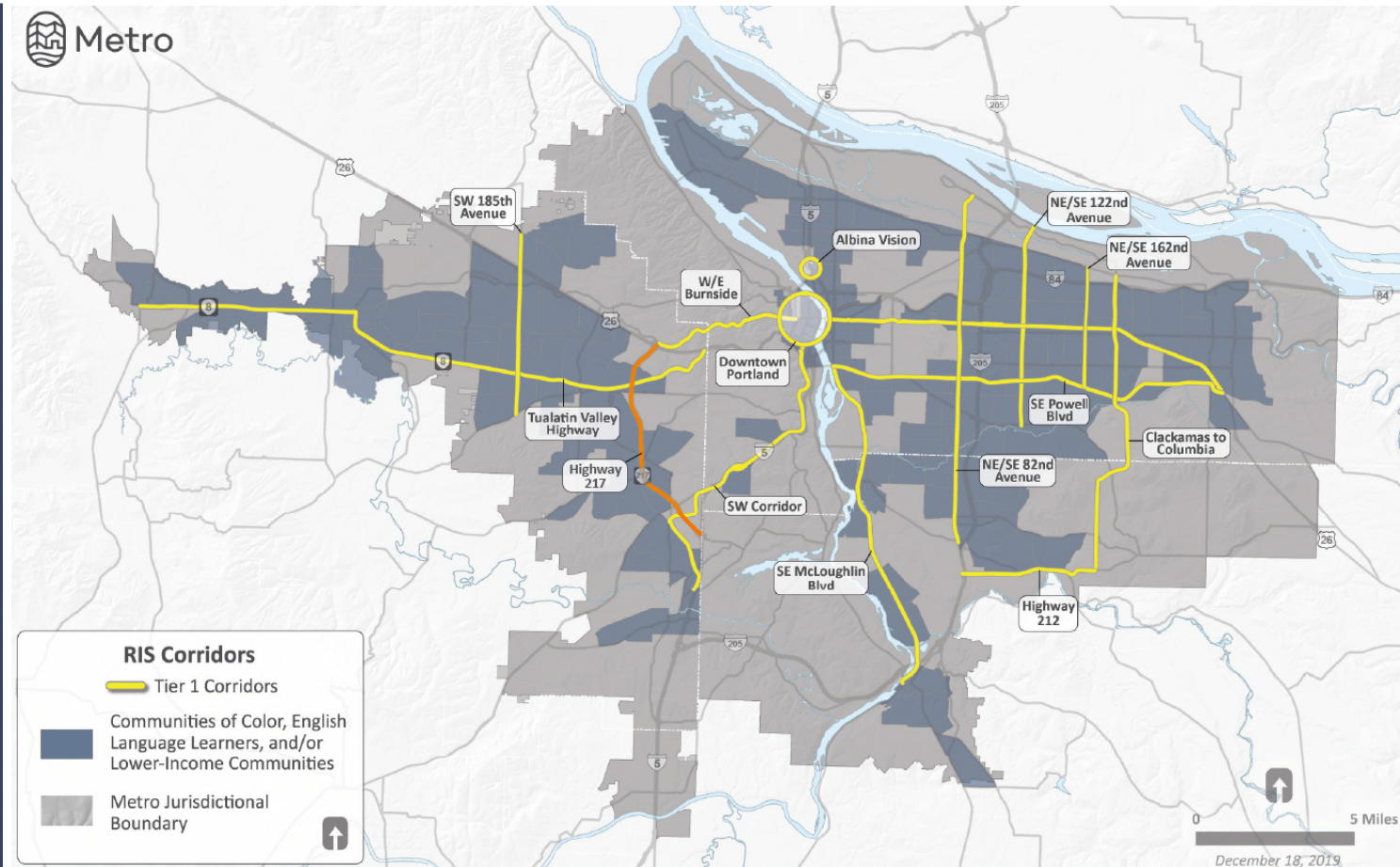
This graphic is not to scale and is for illustrative purposes only.





# Proposed investment supports Task Force values

- Supports communities of color
- Provides access to jobs
- Supports planned growth



# Proposed investment supports communities

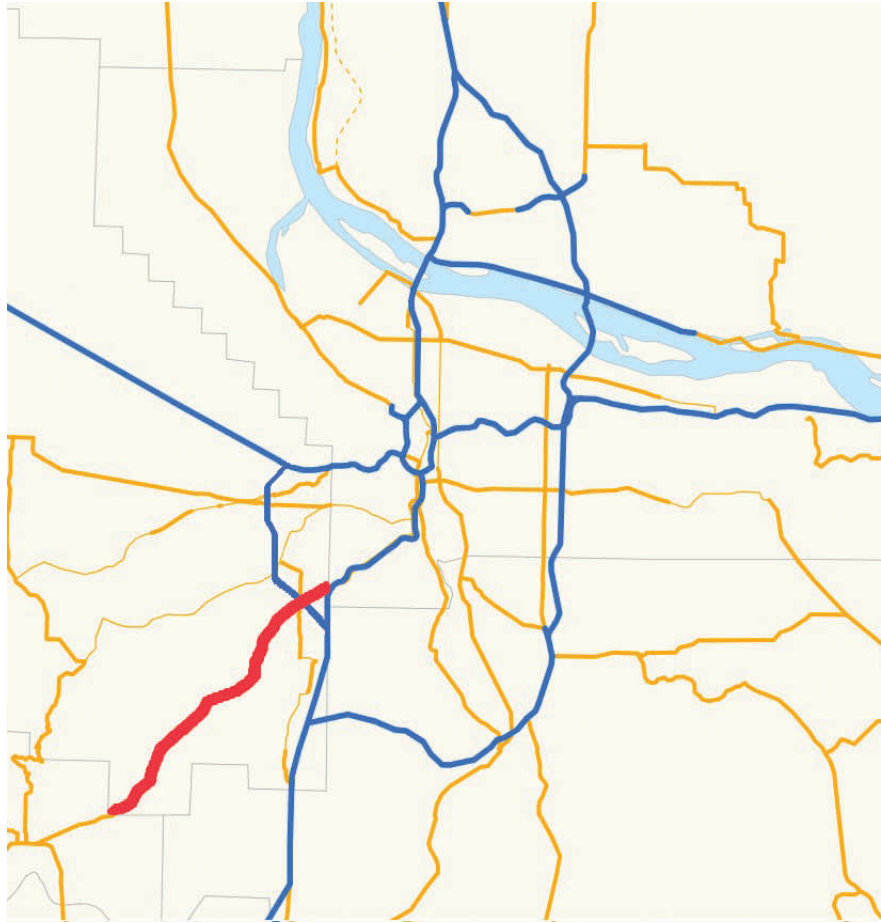






Community support; ready to move forward





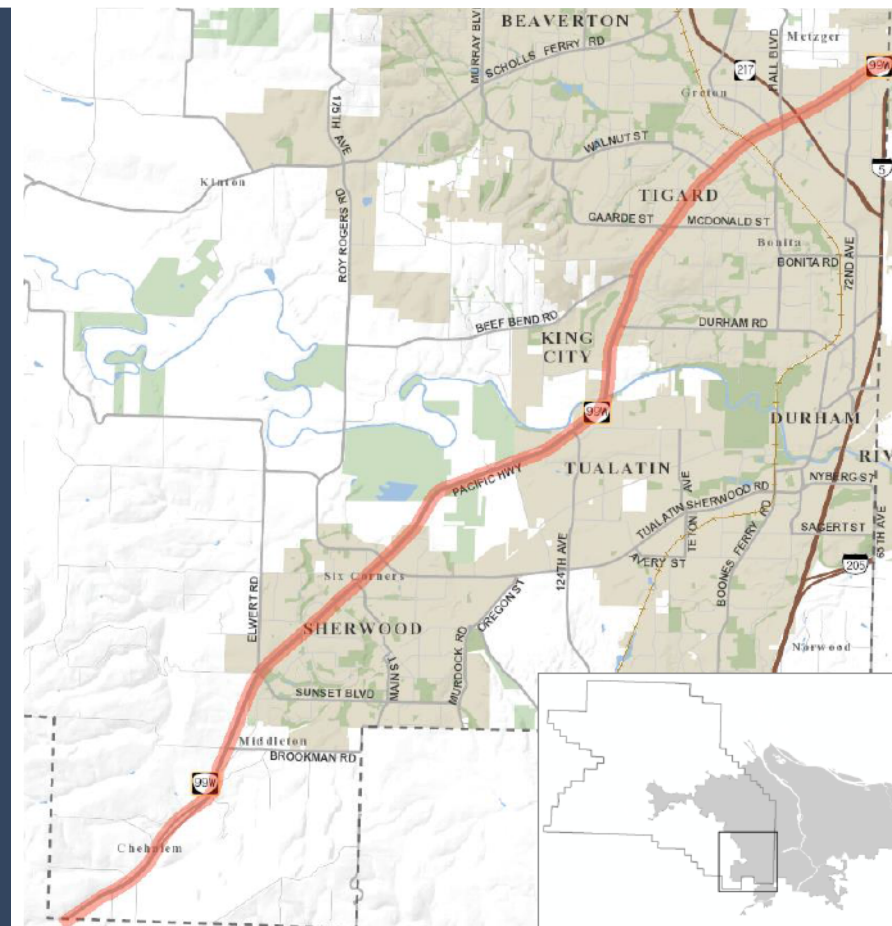
# Hwy 99W Corridor

Washington County and the Cities of Tigard, Tualatin, Sherwood, King City and Durham

# 99W Corridor Study: Linking people and communities

## Develop blueprint for a transit-supportive multimodal corridor:

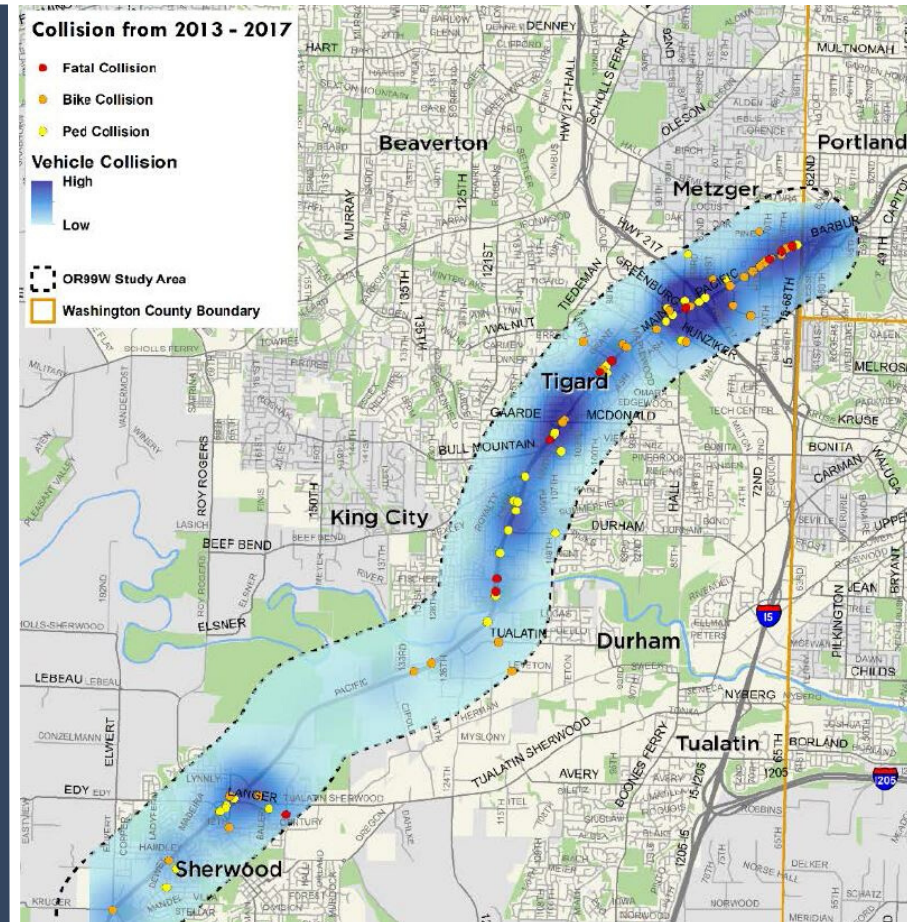
- **Local travel:** Access to shopping jobs, services, housing and recreation.
- **Regional travel:** In and out of the area.
- **Statewide travel:** To the ocean and Willamette Valley.





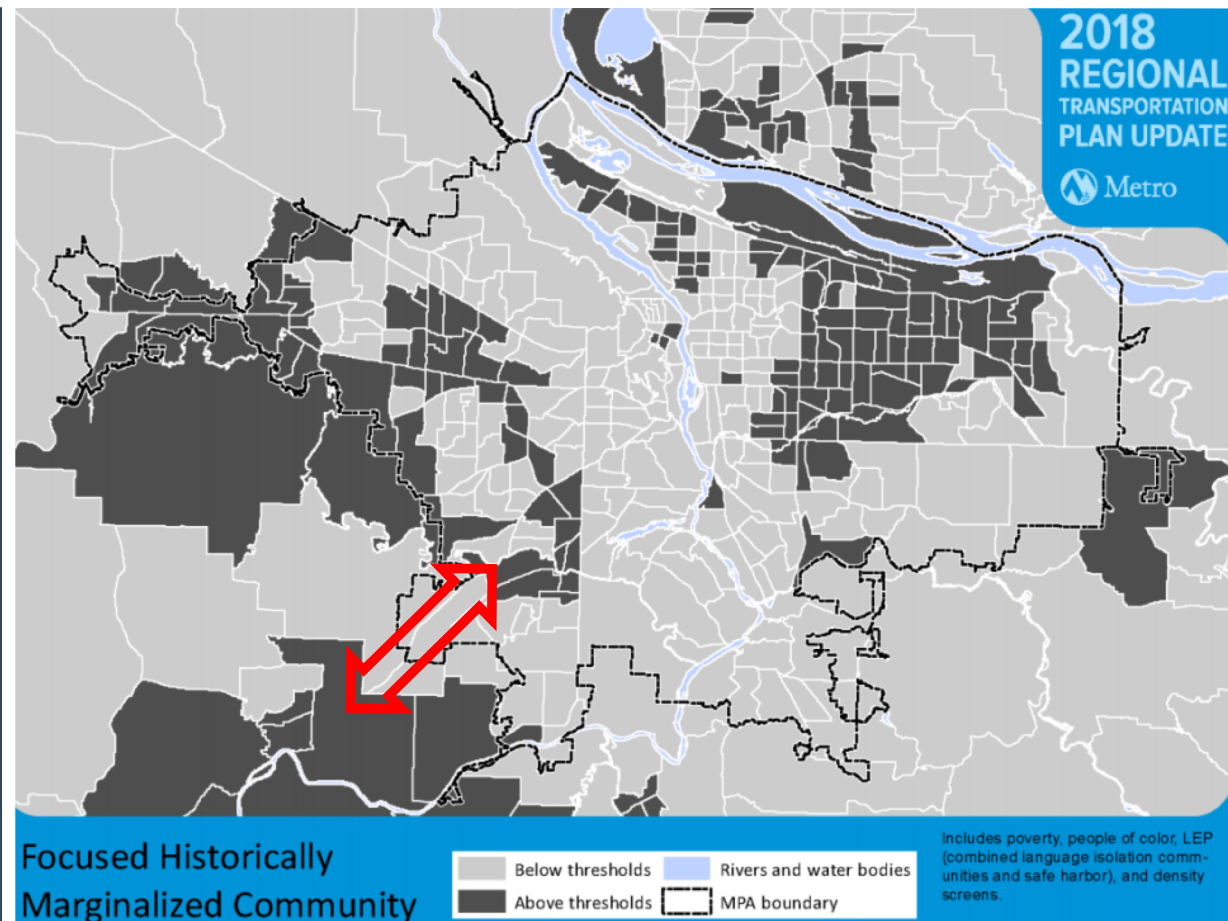
# Safe, accessible travel options

- Improve pedestrian crossings and transit stop amenities.
- Evaluate enhanced transit options.
- Build on SW Corridor investments.



# Supporting equity

- Travel options will benefit historically marginalized populations moving to, through or within the corridor.



# Supports livability and opportunity

- Leverages investments in SW Corridor light rail with improved connections in Tigard and Tualatin.
- Aligns with cities' plans to retain and expand affordable housing, jobs and mixed-use development.







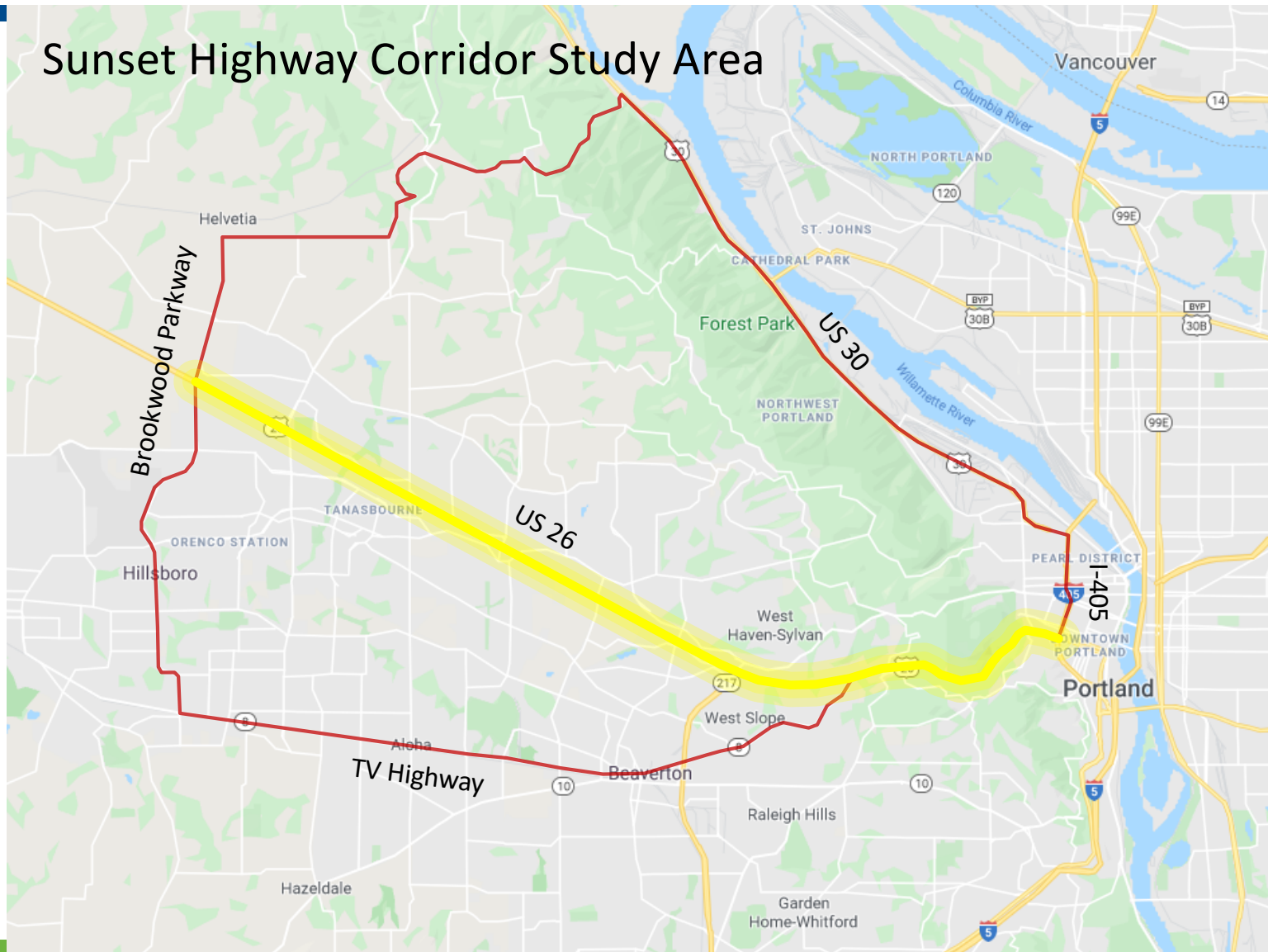
**Community support; ready to move forward**

## Sunset Highway Corridor Study





## Sunset Highway Corridor Study Area



# Next Task Force meeting

**Wednesday, March 4**

5:30-7:30 p.m. (Dinner from 5 p.m.)

Sacramento Elementary School

11600 NE Sacramento Street

## **Agenda:**

- Programs discussion –  
**Watch for survey link & packet!**
- Racial equity analysis

