

# Introducing corridors





We all have places  
we start from...



...and places we're  
trying to go...





...with a journey in  
between.





We're not alone in  
our trips...





...as other people  
in our region have  
places to go.





Our journeys  
can overlap...





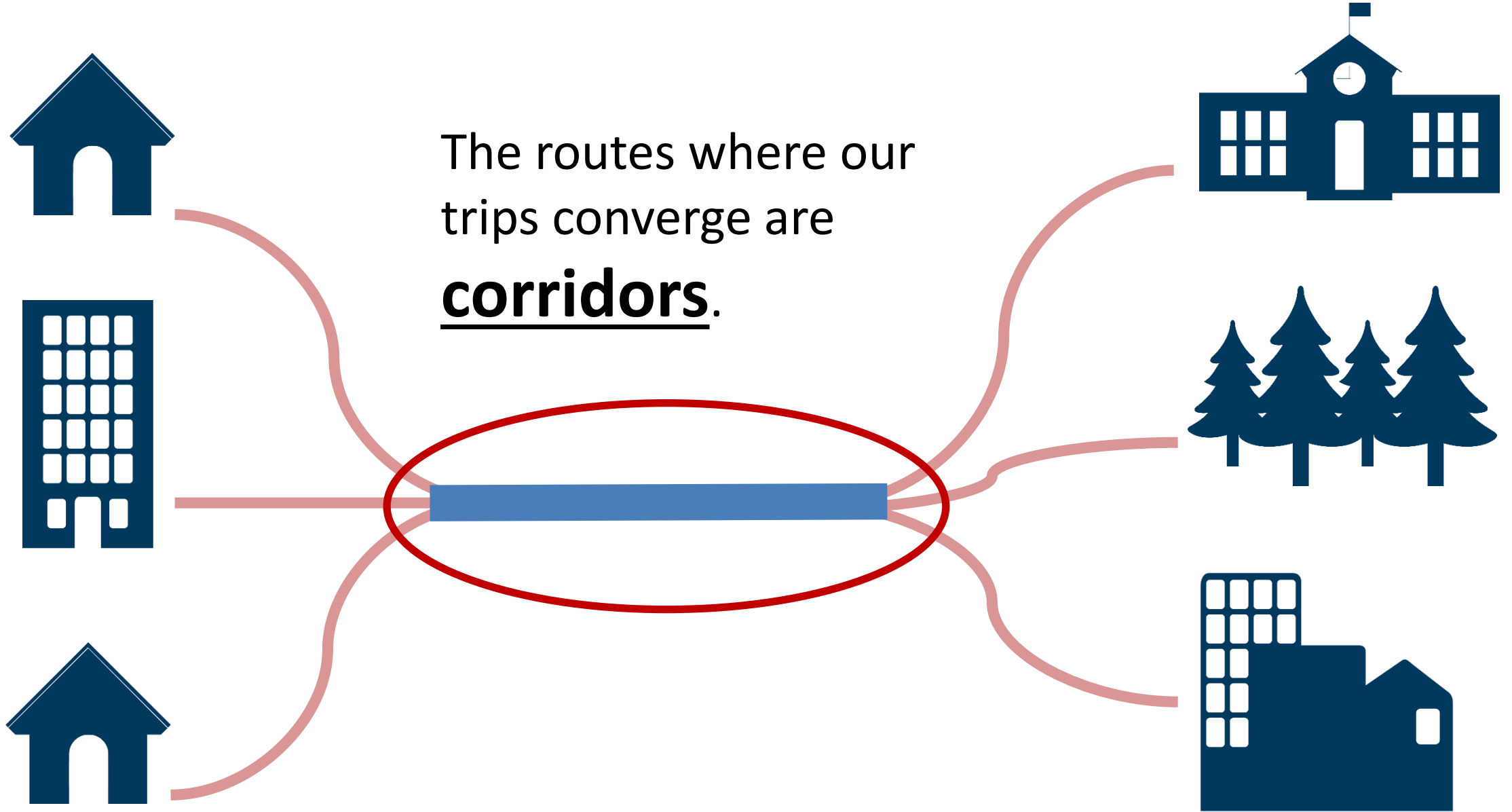
...as some routes...





...present the quickest  
and most direct way to  
get to our destinations.





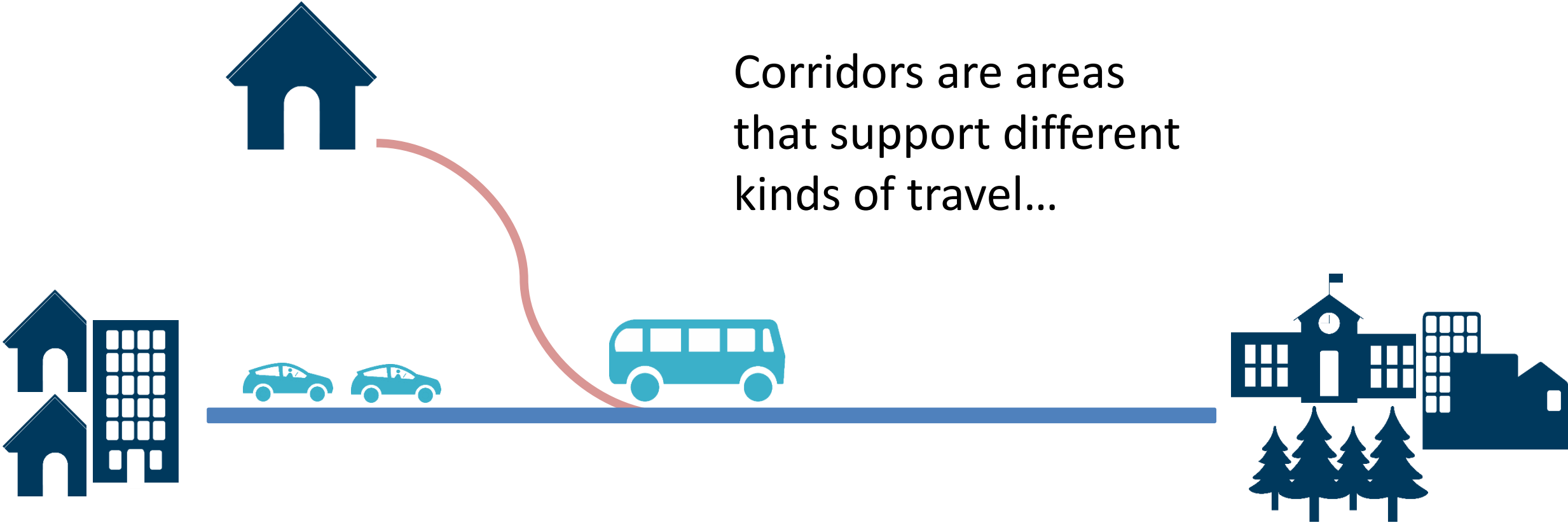
Corridors are not  
just roadways...

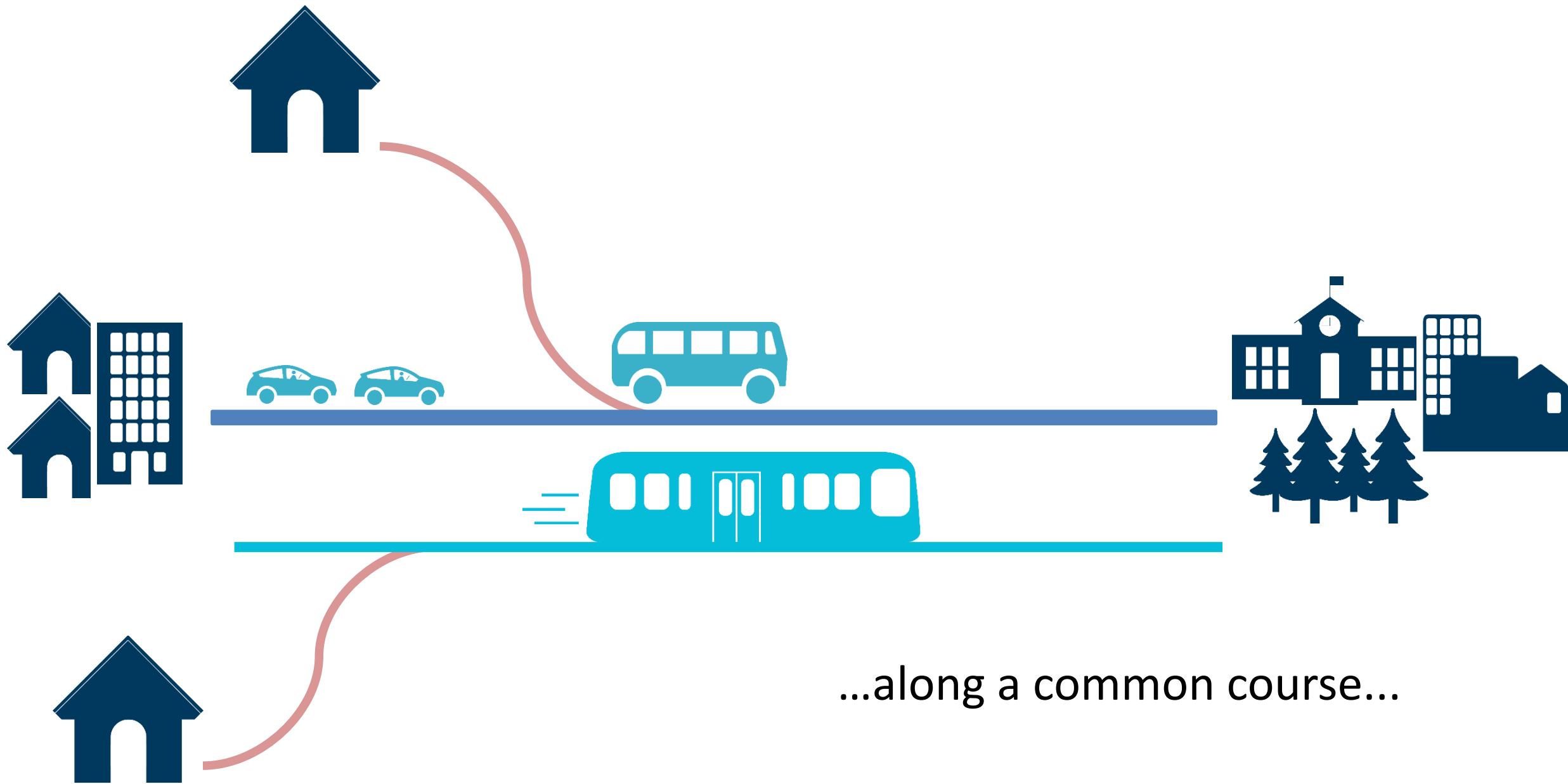


...that serve cars from  
point A to point B.

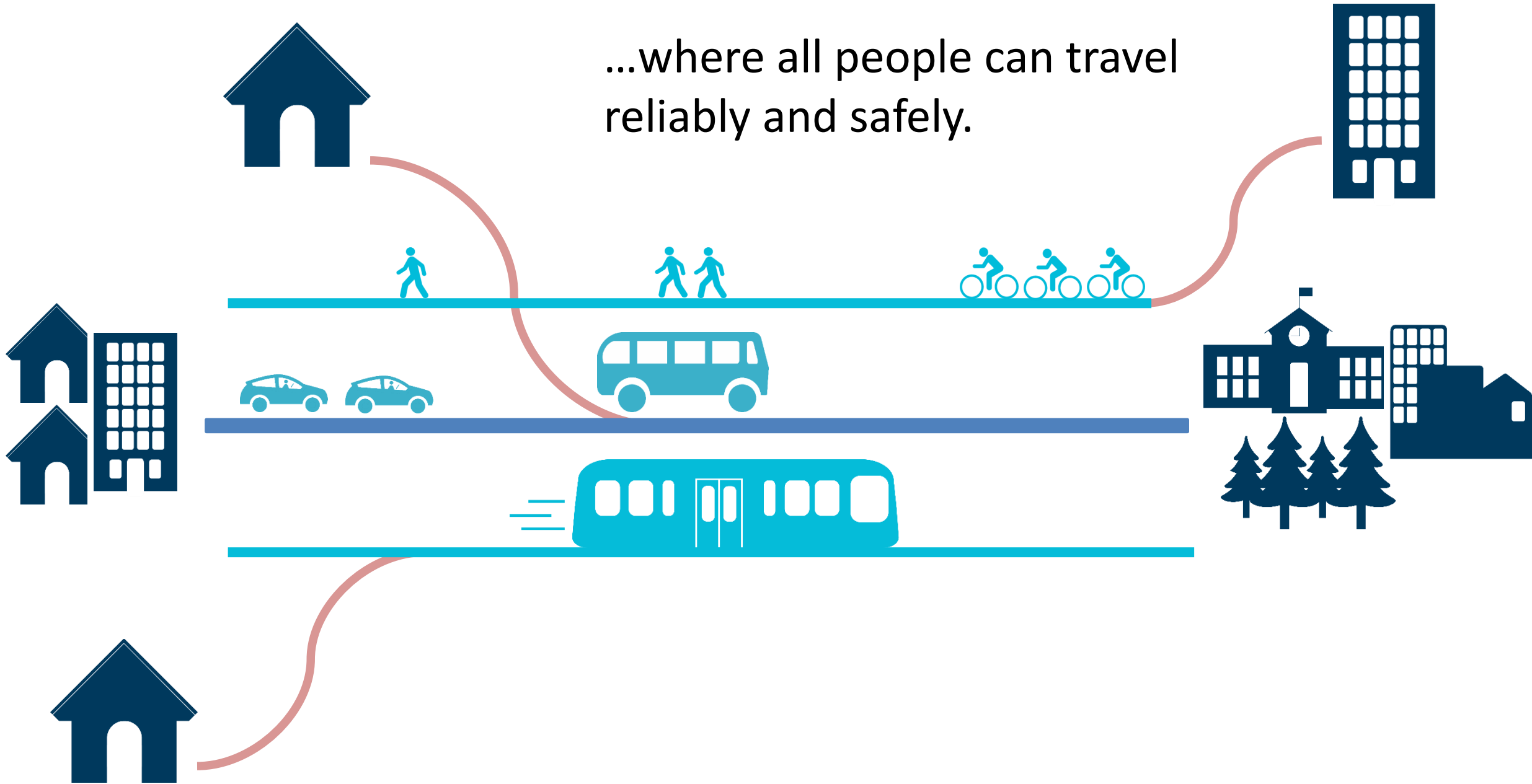


Corridors are areas  
that support different  
kinds of travel...





...where all people can travel  
reliably and safely.





Our trips converge...





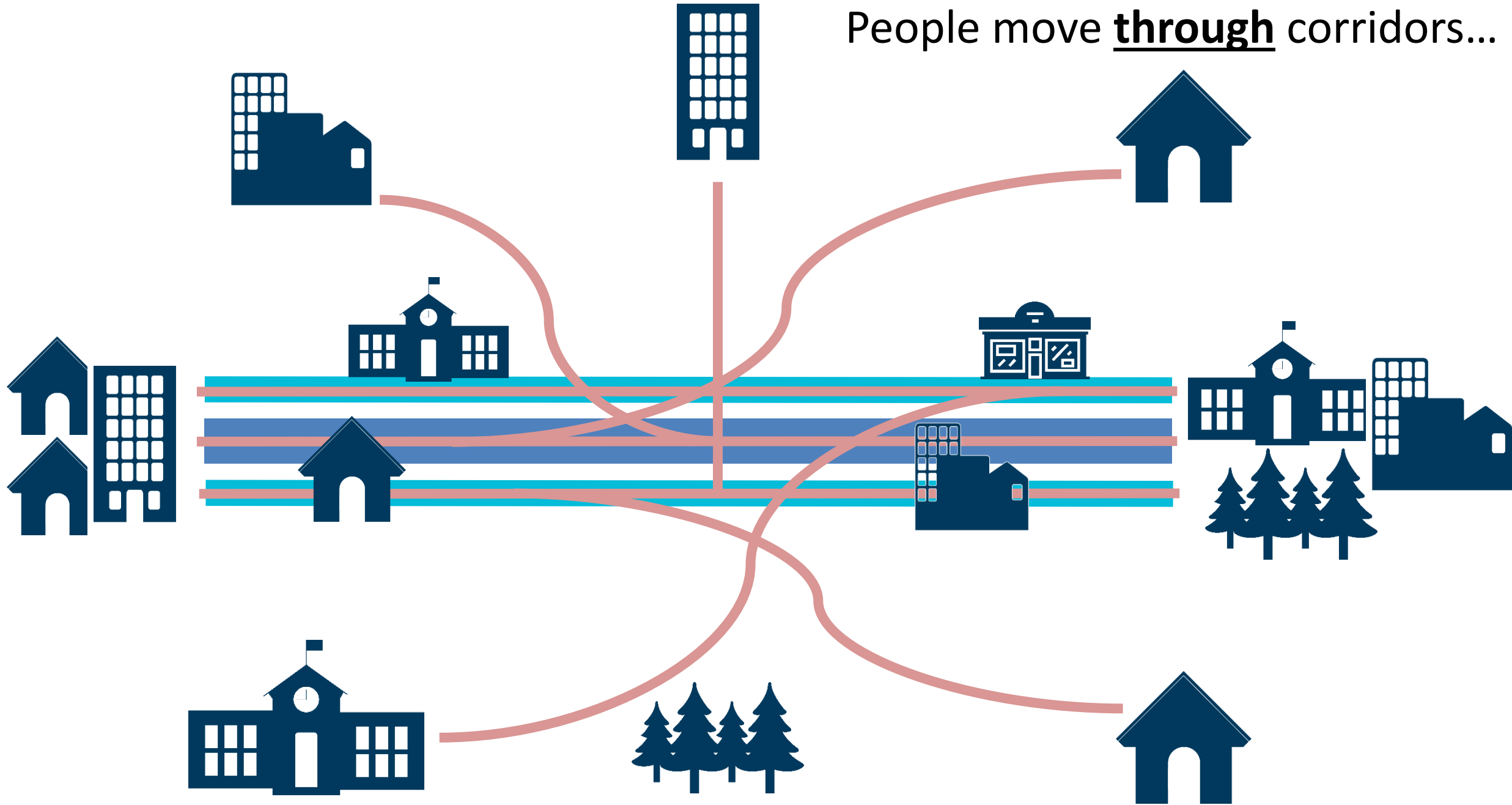


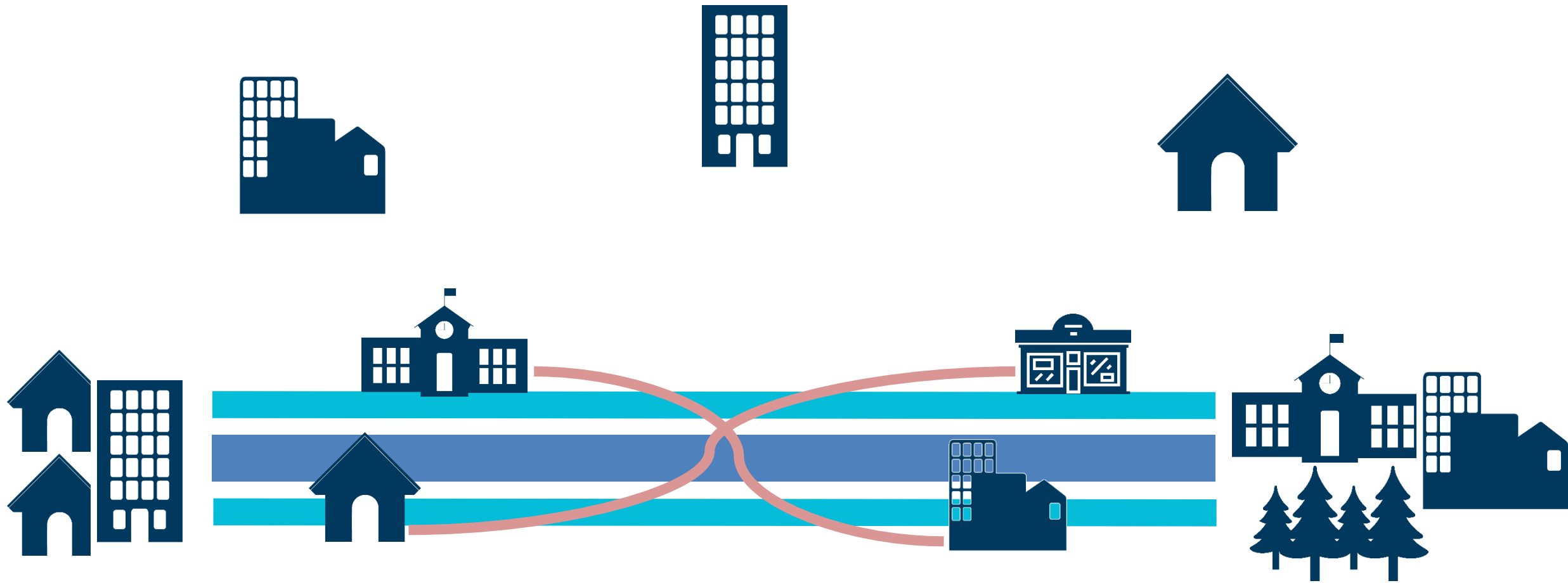


**Corridors are part of communities.**



People move through corridors...

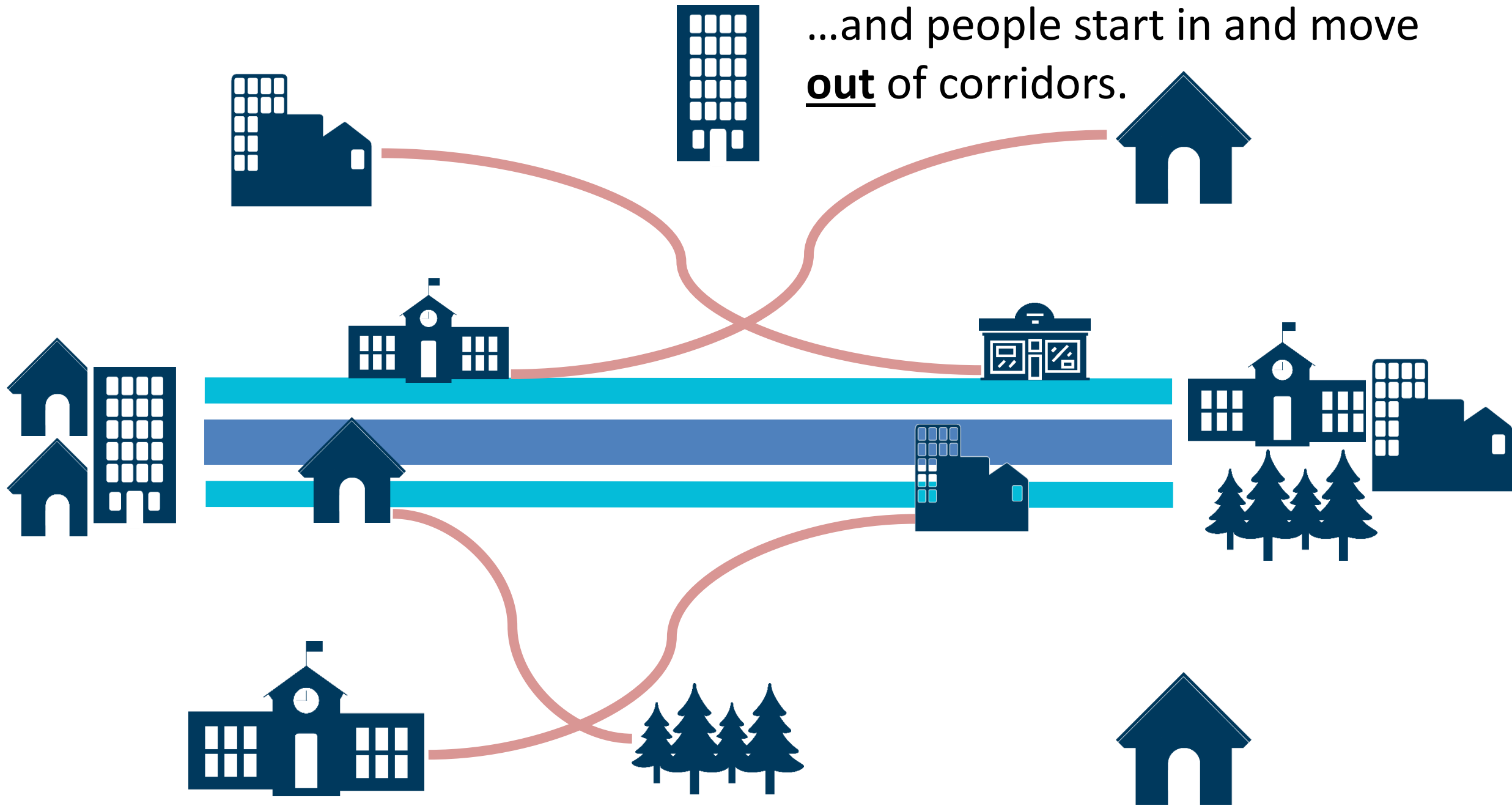




...people move within corridors...



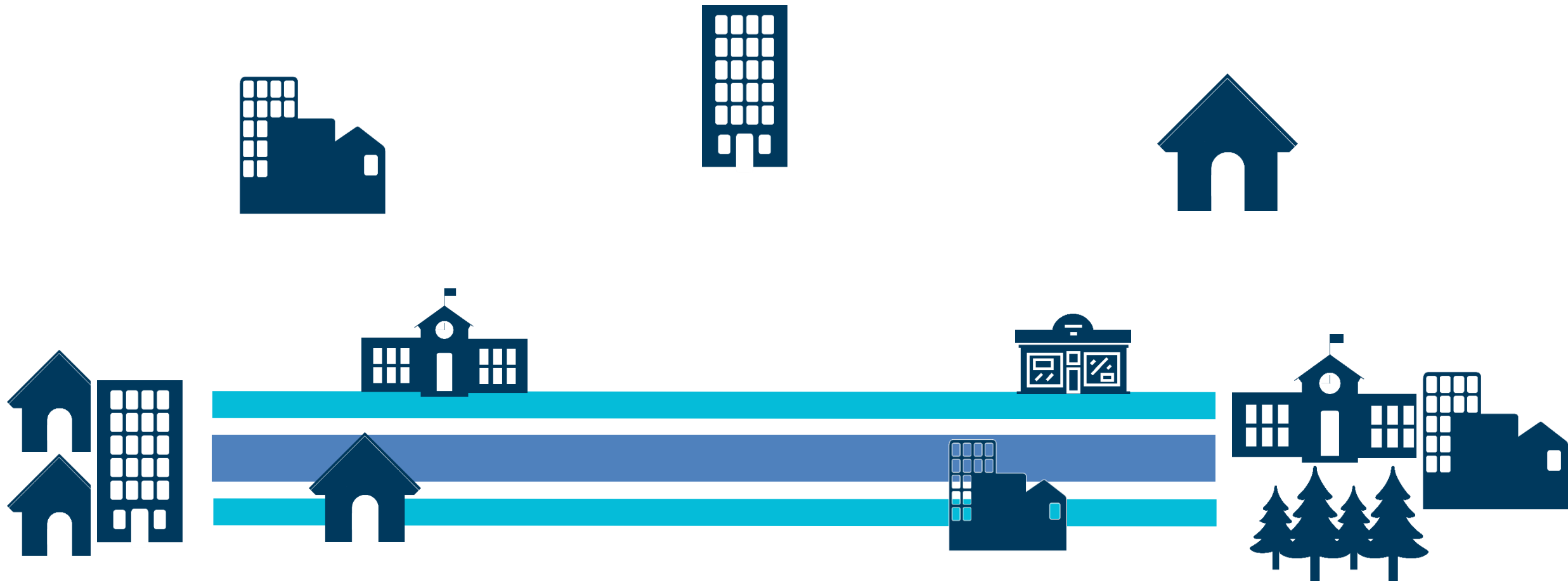
...and people start in and move out of corridors.





As growth continues...





...and more people move here...



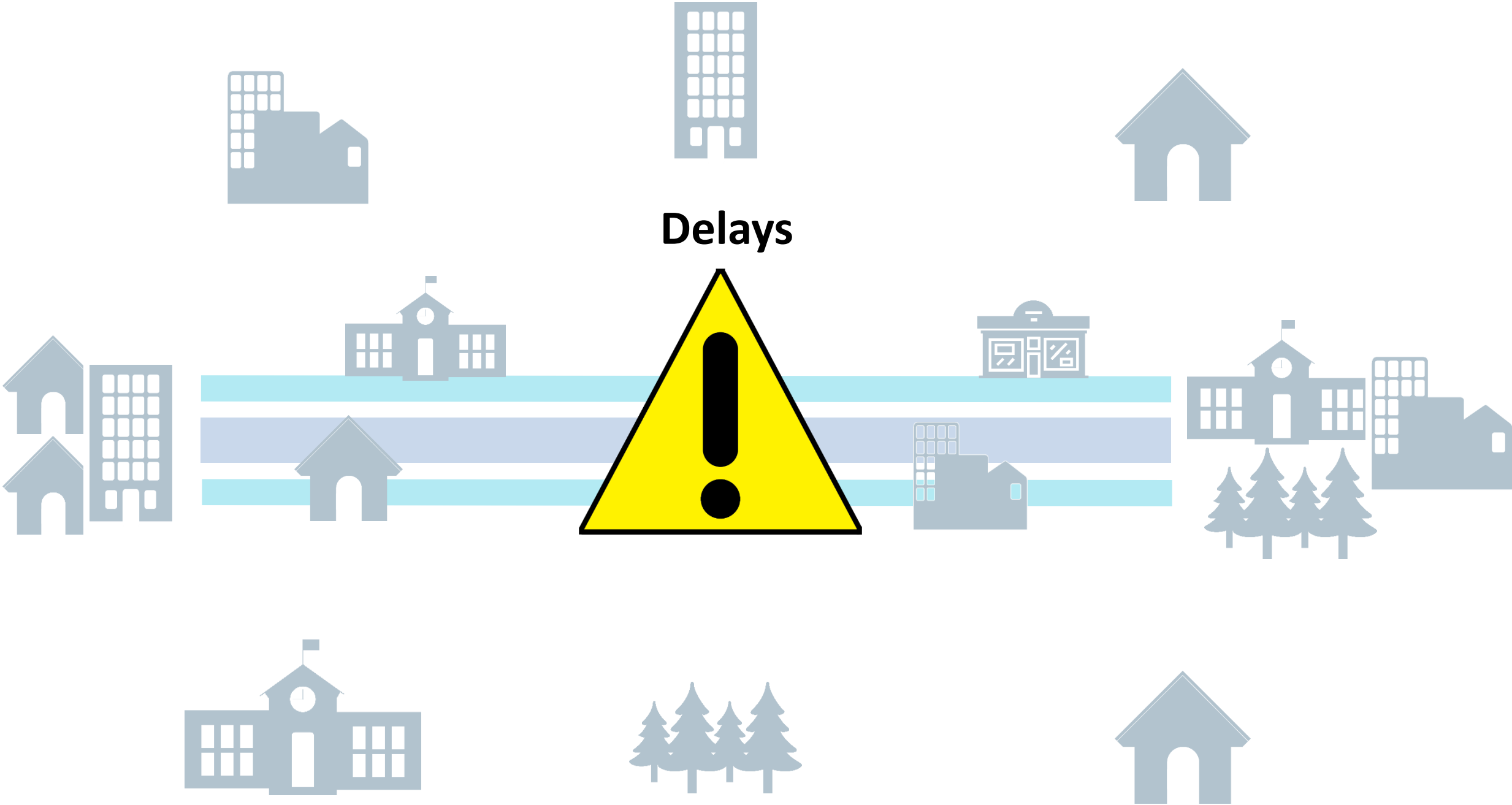


...corridors are getting busier.  
This has impacts.



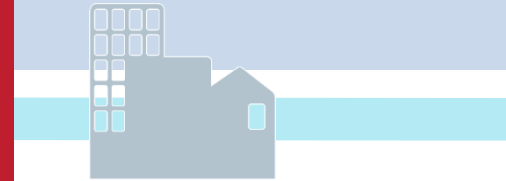


**Delays**

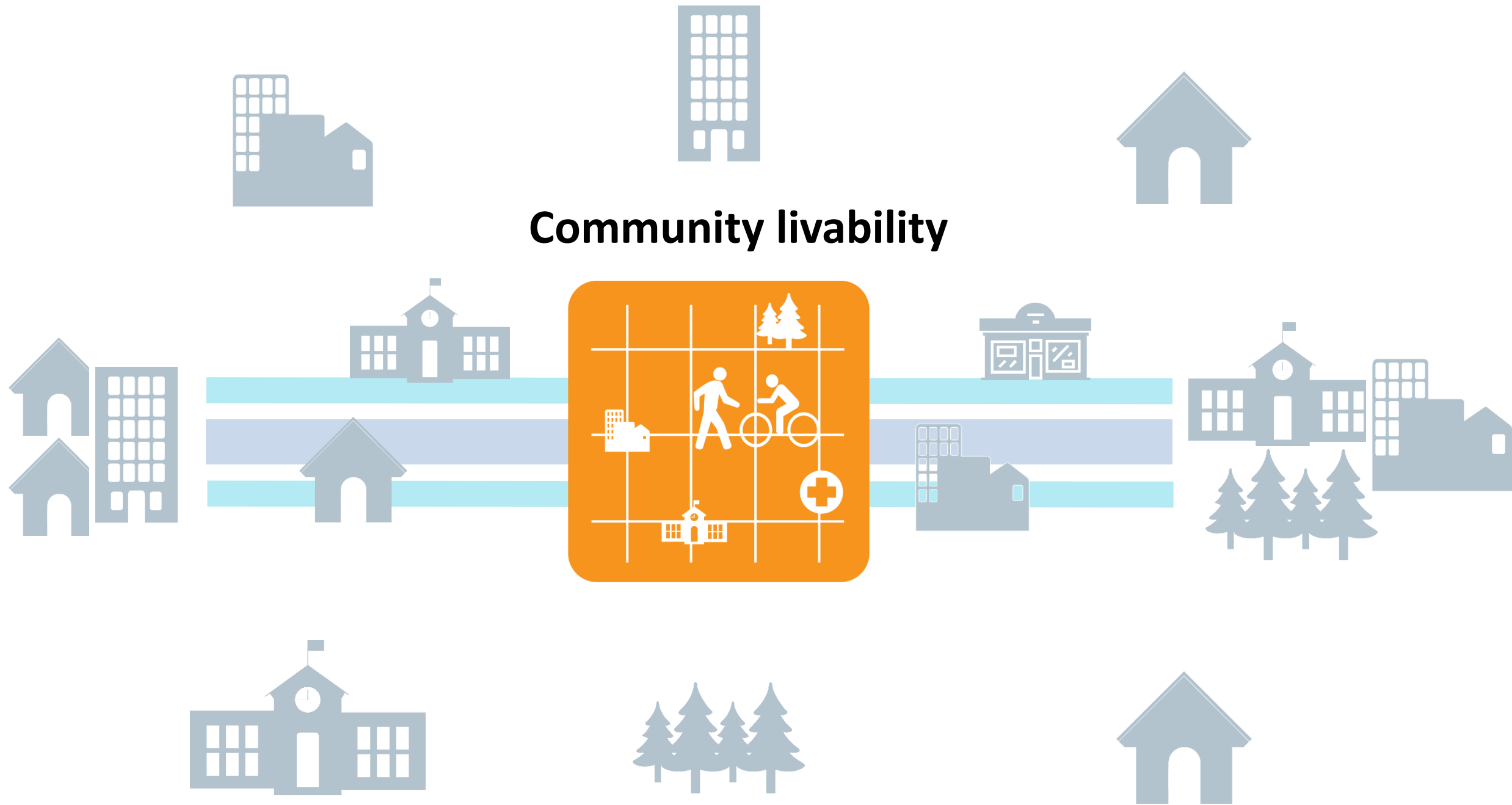




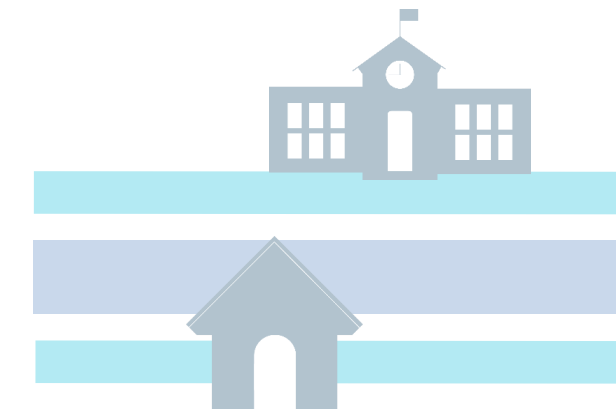
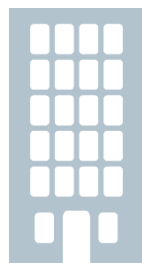
# Safety



# Community livability



# Economy





**An issue in one corridor...**



**...can impact  
other corridors...**

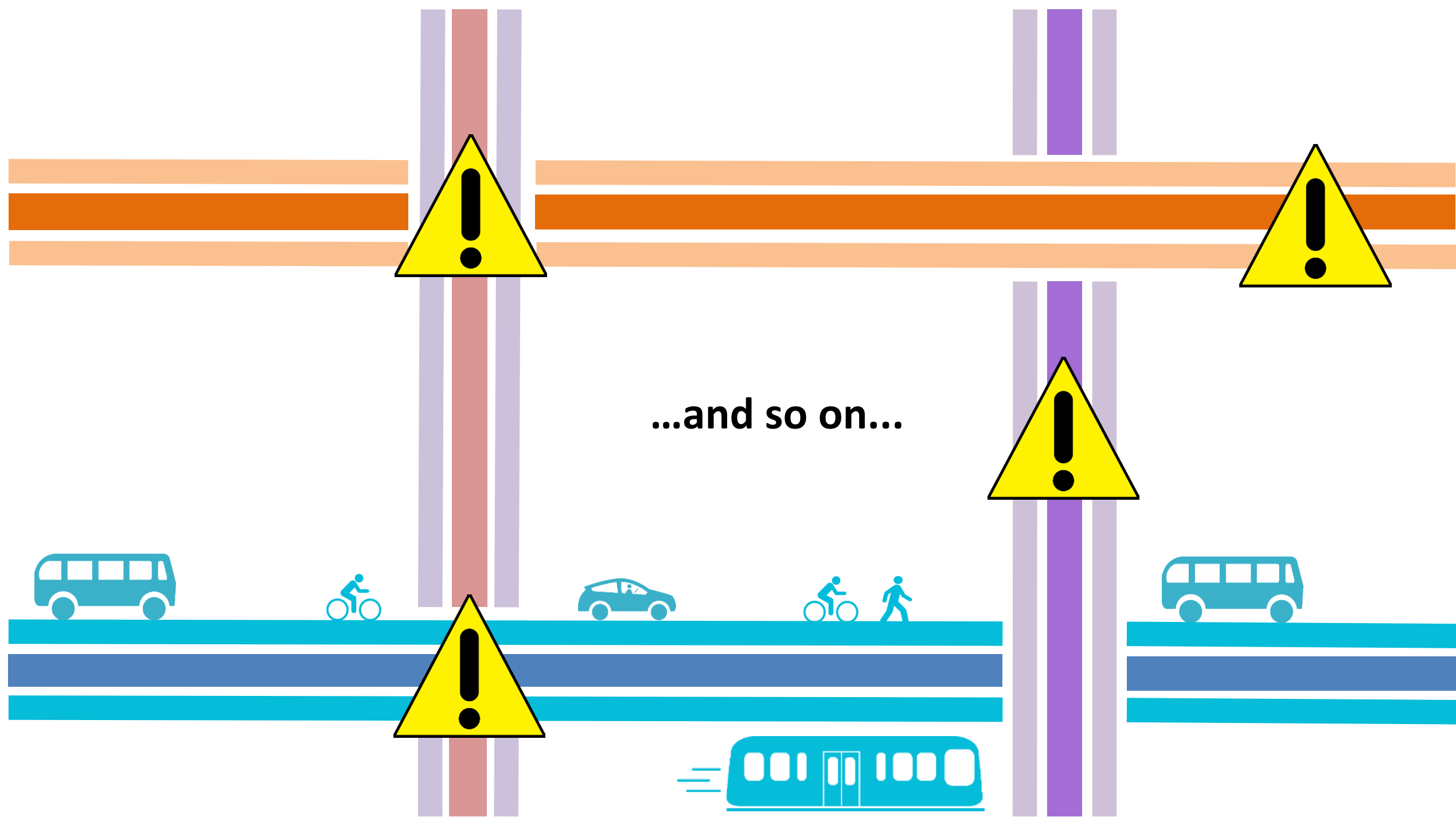




...and so on...







The background of the image features a complex network of overlapping, semi-transparent lines in various colors including red, orange, blue, purple, teal, and grey. These lines are arranged in a way that suggests a web or a series of interconnected paths, with some lines running horizontally, some vertically, and others at diagonal angles. The lines vary in thickness and opacity, creating a layered effect.

**...affecting the region's  
whole network.**

**Corridors connect us all.**





# Meet some corridors...





# Corridors have needs... because people do.

- Arrive on time
- Travel safely
- Access more opportunities
- Take pride in community



# We have to prioritize.

- Where can we bring the greatest benefits?
- Where do communities most need investment?
- Where are solutions ready?
- Where can we get ahead of growth?







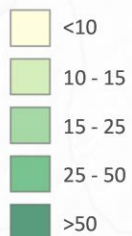
## Regional Investment Strategy Proposed Corridors

### RIS Corridors

— Top 60 Corridors

Expected Growth  
2015 - 2040

Jobs/Pop per acre

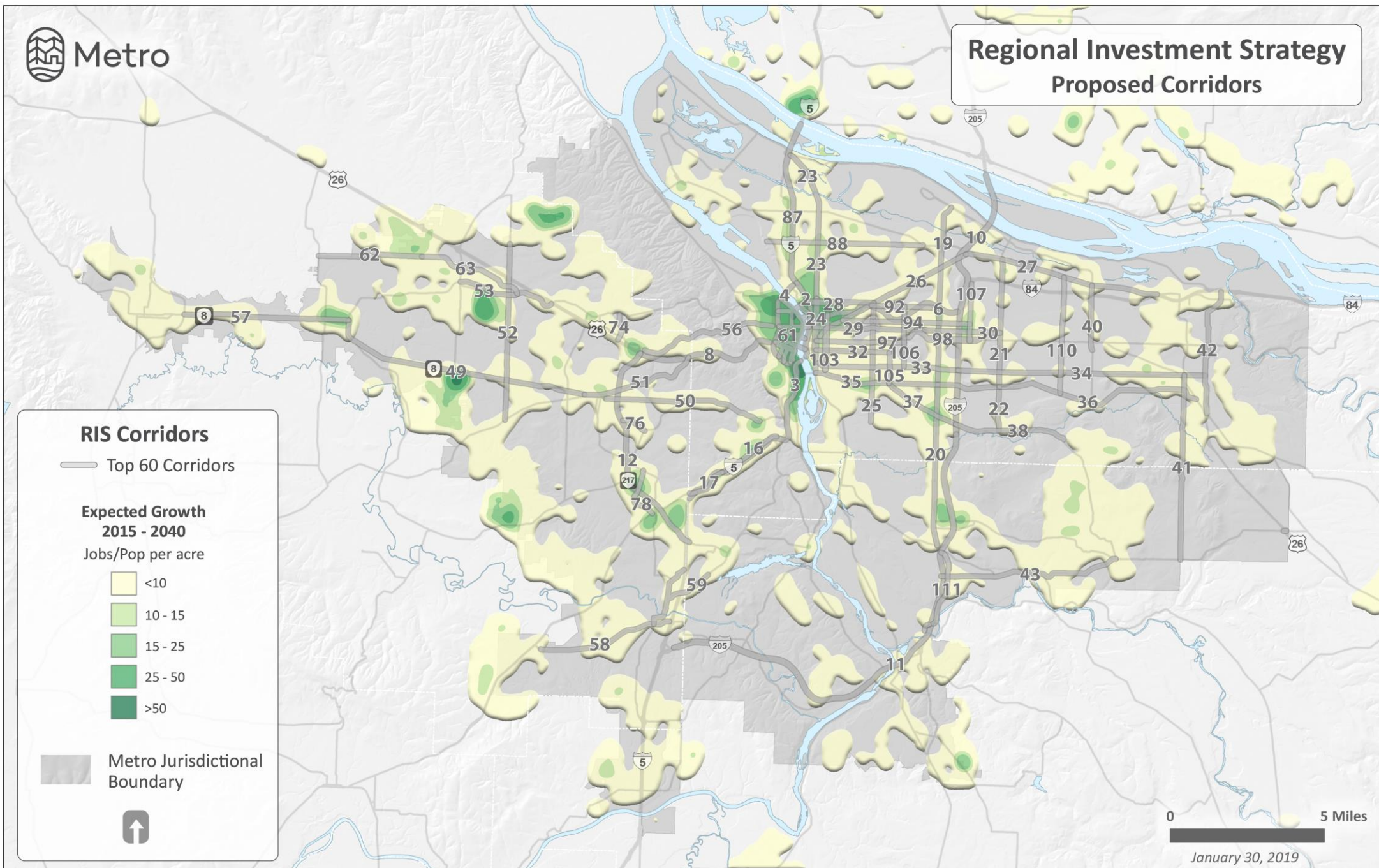


Metro Jurisdictional  
Boundary



0 5 Miles

January 30, 2019



# Is it a corridor?

- Who uses it?
- Where do they go?
- What community does it serve?
- What do people think of it?
- What challenges does it have?
- What is its future?





**#getmoving2020**  
**[oregonmetro.gov/transportation](https://oregonmetro.gov/transportation)**

