

Future Metro South Recycling and Transfer Center

Community Advisory Group, Meeting #3

10-01-2020



Helpful tips before we start the meeting

- This meeting will have **simultaneous interpretation**. Be sure to **choose the language** in which you wish to listen to. If you do not choose a language, you may miss out on some audio throughout the meeting.
- As a reminder, the meeting is being recorded.
- Please remain muted when not speaking, to limit background noise.
- If you wish to use the raise hand feature, it is located when you hit participants in your settings bar, or in “more” on a mobile device.
- You may also get our attention with a physical queue or in the chat feature.

For members of the public who wish to reach out to us please email **futuresouth@oregonmetro.gov**

Community Agreements

- Take care of yourself
(stretch, drink water, rest)
- Take space/make space
- One mic, one speaker
- Stay present
- Speak from your own experience
- Embrace curiosity
- Don't stay confused (ask questions)
- Interrupt oppression:
"Ouch! Oops!"
- Acknowledge impact of
words/actions, take responsibility
- Expect unfinished business

Acuerdos Comunitarios

- Cuídate
(estírate, bebe agua, descansa)
- Toma espacio / haz espacio
- Un micrófono, un altavoz
- Estar presente
- Habla de tu propia experiencia
- Abraza la curiosidad
- No te confundas (haz preguntas)
- Interrumpir la opresión: "¡Ay! ¡Ups! "
- reconocer el impacto de las palabras/
acciones, asumir la responsabilidad
- Espere asuntos pendientes

Introductions

- **Name /Nombre**
- **Pronouns/ pronombre**
- **What is ONE thing you are excited about/or you find interesting about the project so far?**
- **UNA cosa que te emociona o que encuentras interesante del proyecto hasta este punto?**

What we talked about last meeting

Lo que hablamos la reunión pasada

- The garbage and recycling system
- 2030 Regional Waste Plan
- Existing Metro South overview of services

- El sistema de basura y reciclaje
- Plan Regional de Residuos 2030
- Descripción general de los servicios existentes de Metro South

Agenda

- 6:30 P.M. Project overview continued /
Continuación del resumen del proyecto**
- 7:00 P.M. Modern Transfer Stations /
Estaciones de transferencia modernas**
- 7:50 P.M. Questions / Preguntas**
- 8:00 P.M. Close / Cierre de la reunión**

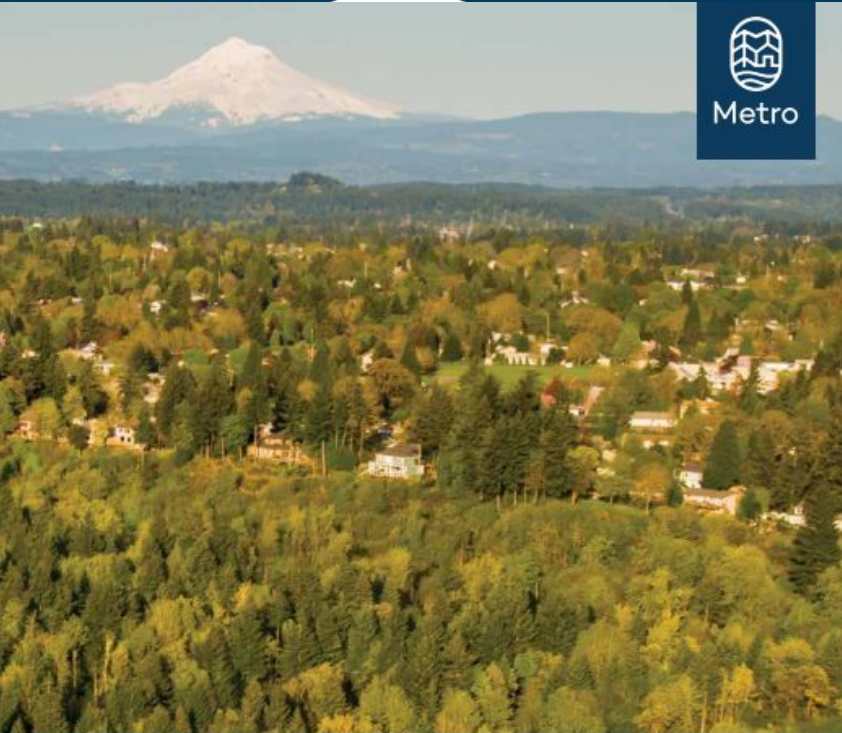
New facility property search

How has the project team identified possible sites?

Búsqueda de propiedades para las nuevas instalaciones

¿Cómo ha identificado el equipo del proyecto los posibles sitios?

How did we start the search? ¿Cómo empezamos la búsqueda?



HDR



Final Report
**METRO SOUTH STATION
ASSESSMENT**

Portland, Oregon
Issued: February 23, 2016
Revised: December 5, 2016



2030 Regional Waste Plan

Equity, health and the environment

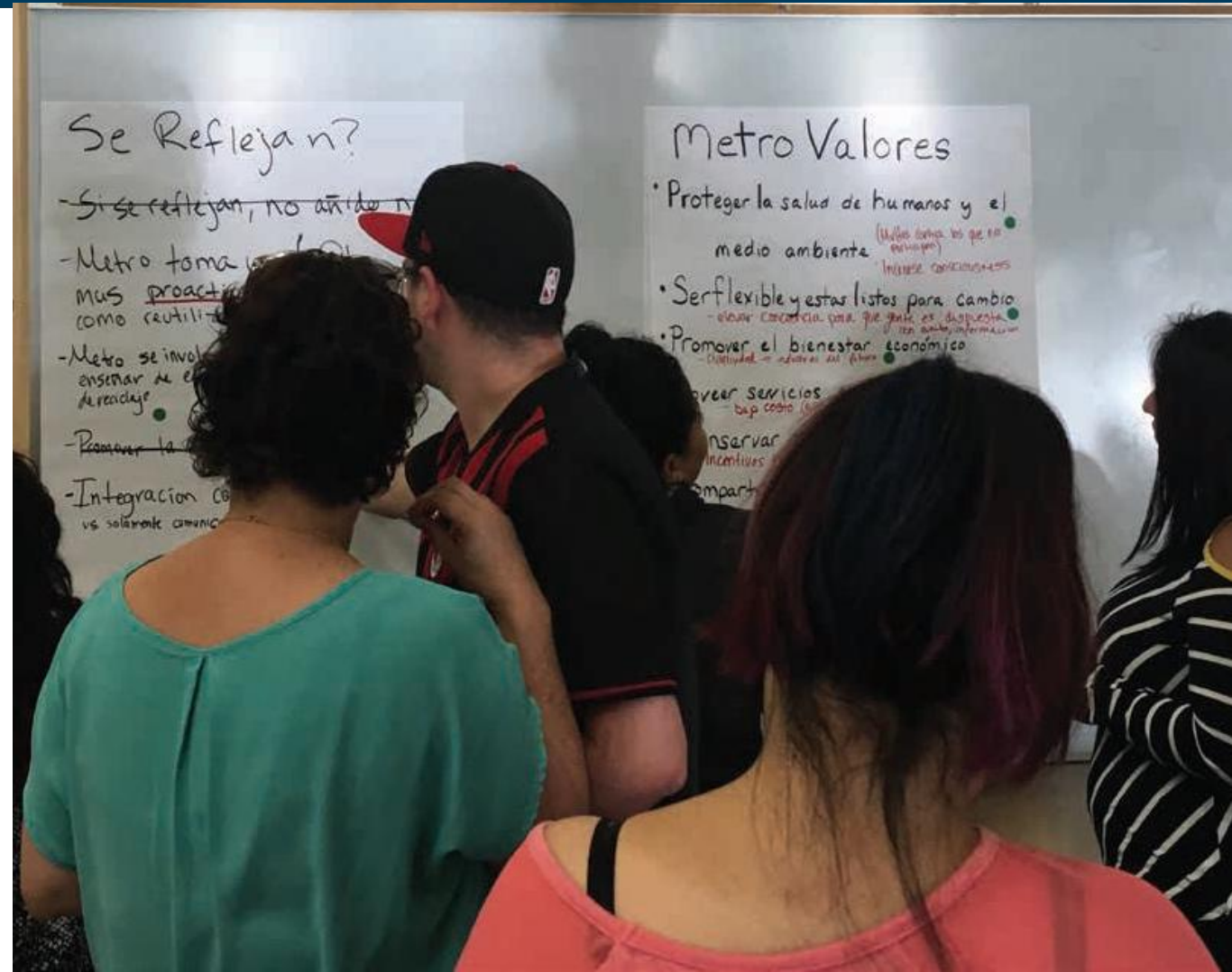
We visited facilities in Seattle & King County



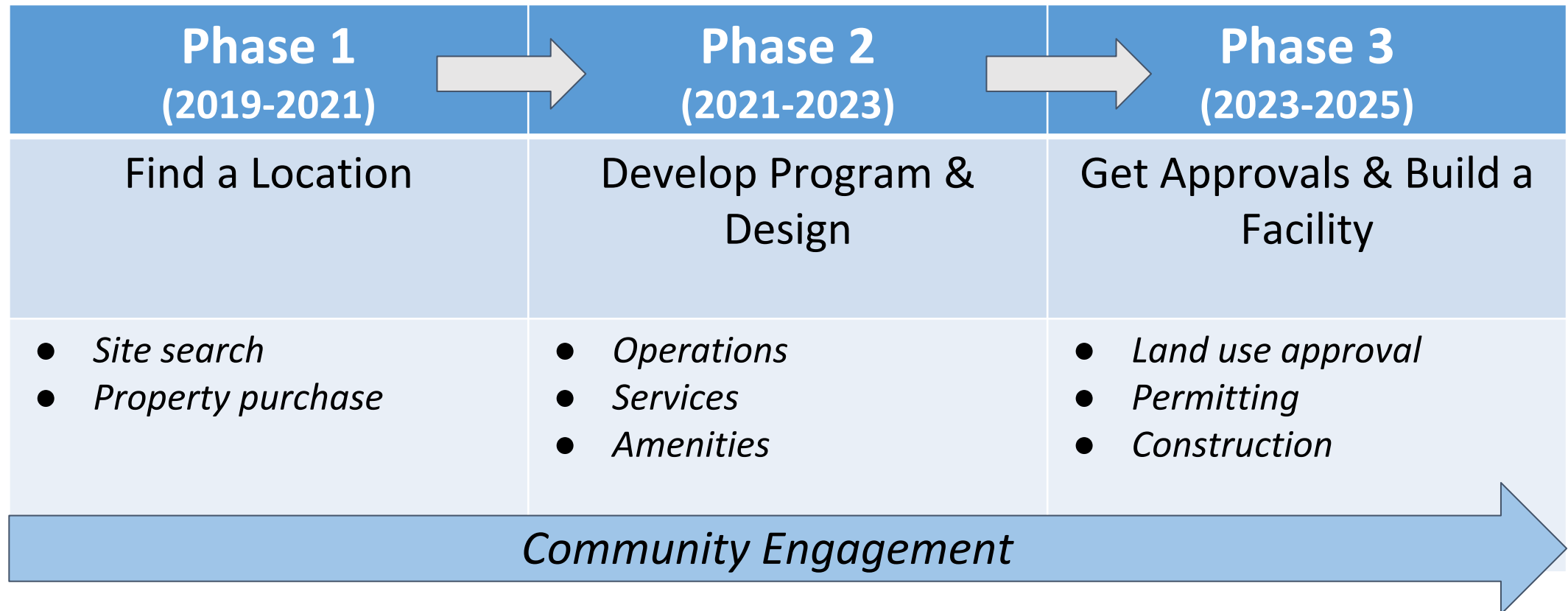
We reviewed community input from plans & surveys

What we heard was most important to community:

- Quality services
- Information and education
- Garbage and recycling operations
- Jobs, training and business opportunities



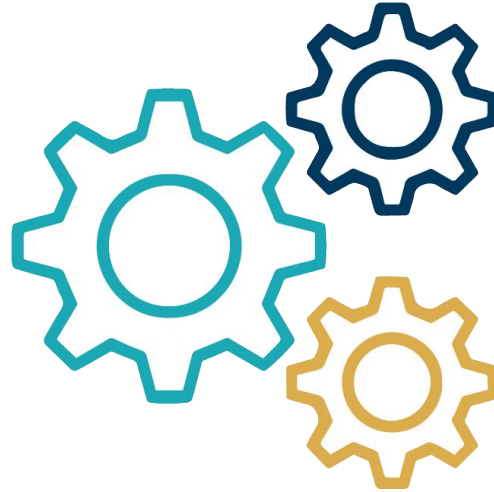
We established general project phases



We established project “Siting Criteria”



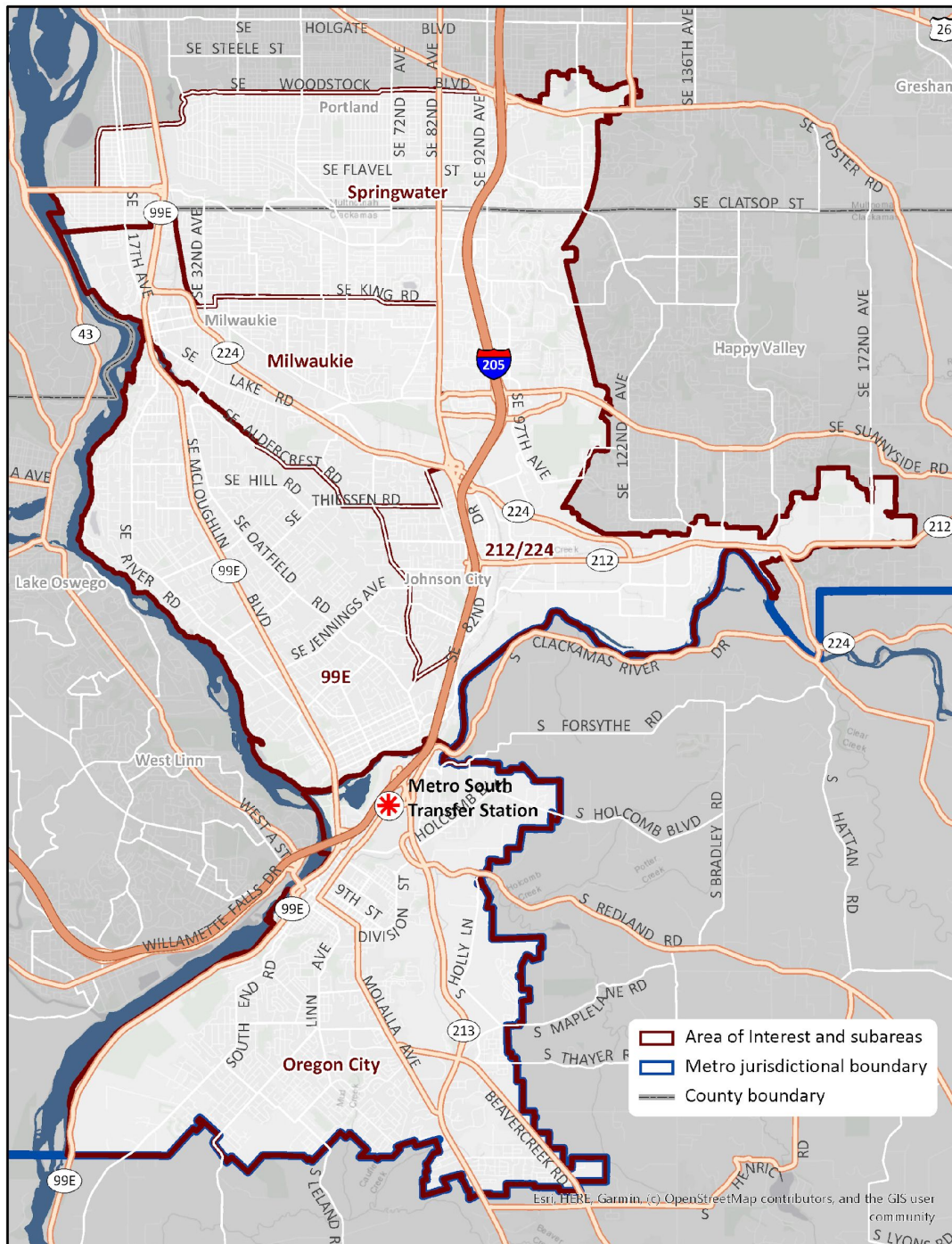
Base
3



Functional
18



Community
TBD



Base Criteria 1: Establish a siting area

- Based on demand for services
- Access and proximity to major highways and roads
- Focus on commercial and industrial corridors where use is allowed

Base Criteria 3:
Identify sites of at
least 7 acres



Base criteria identified 166 potential sites

Siting Area

All sites in the established boundary

61,605 ▶

properties



Zoning

Site is zoned Industrial, Commercial, or Commercial Mixed Use

2,739 ▶

properties



Size

Site is at least 7 acres

166

properties



Functional Criteria: 18 critical site attributes

Minimize Community Impact

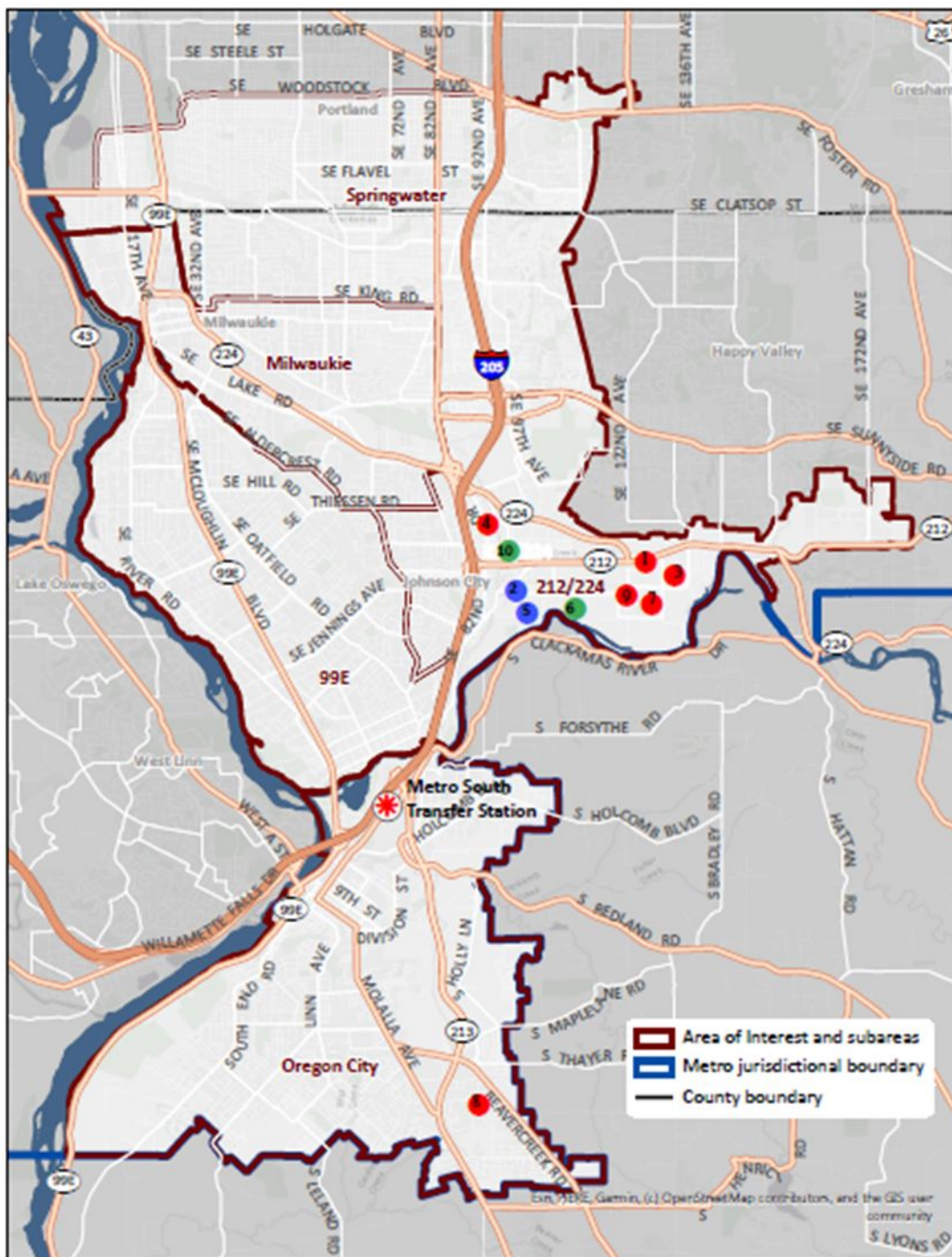
Minimize Environmental Impact

Ensure Accessible/ Convenient Location

Ensure Project is Feasible

Ensure Project Meets Operational Needs

Top 10 Sites with Base & Functional Criteria



Top 10 Sites	Acres	Local Zoning	Score with Ranking
1	26.6	LI	87
2	14.1	LI	85
3	11.0	LI	84
4	10.7	LI	84
5	45.6	GI	83
6	25.9	GI	83
7	21.2	GI	82
8	10.8	CI	82
9	16.8	LI	82
10	12.3	LI	81
	<i>Confirmed no interest</i>		
	<i>Pending communication</i>		
	<i>Possible interest</i>		

Community Criteria/Considerations: *To be developed by you (CAG)*

- What are the **essential features a project site** should have?
- Are there **areas or places Metro should avoid** ? Why?
- What are the **challenges** this project could bring? What are the **benefits**?
- What **features of modern transfer stations** are you excited about?
- What is your **level of support** for this project?

Intro to Who Lives & Works in Siting Area

Racial Equity Analysis

Purpose of the analysis

- To learn about the communities in the siting area
- May help target and refine **engagement and outreach** efforts
- May help identify ways to **ensure communities of color and other historically marginalized communities benefit** from the new facility
- May help identify **disproportionate impacts** on communities of color and low income populations
- Relates to **environmental justice** and Metro's **Racial Equity Strategy**

What is environmental justice?

Environmental justice mandate in executive order (1994):

Identify and address disproportionately high and adverse human health or environmental effects of its programs, policies, and activities on minority populations and low-income populations in the United States.

Methodology

Look at siting area and five subareas in terms of:

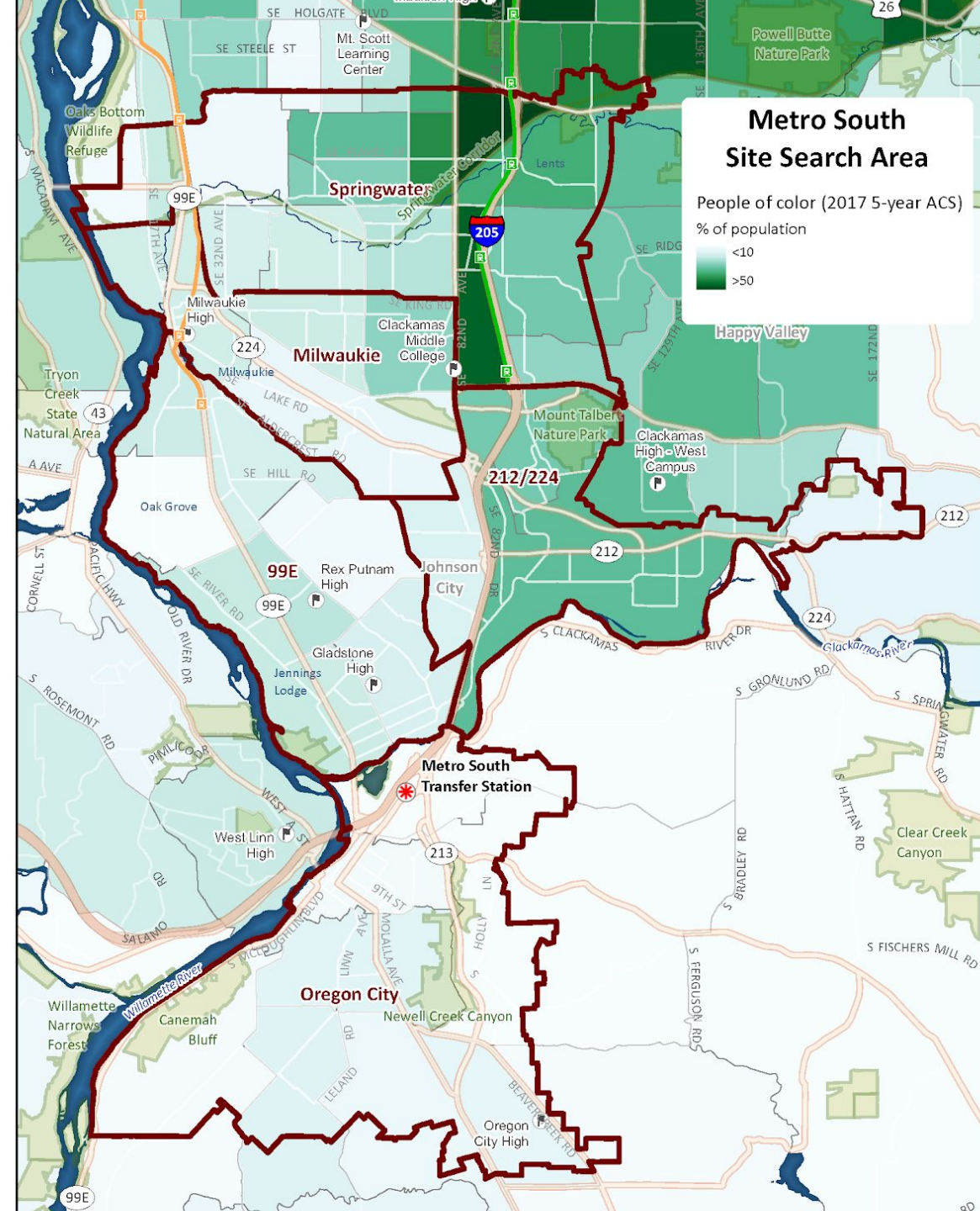
- People of color, low income and other demographic variables
- Population density
- Commercial and industrial zones

People of color

% people who identify as:

American Indian or Alaska Native	0.7%
Asian	4%
Black or African American	1.6%
Hispanic, Latino or Spanish origin	10%
Native Hawaiian or Pacific Islander	0.2%
Other race/Multiracial	3%

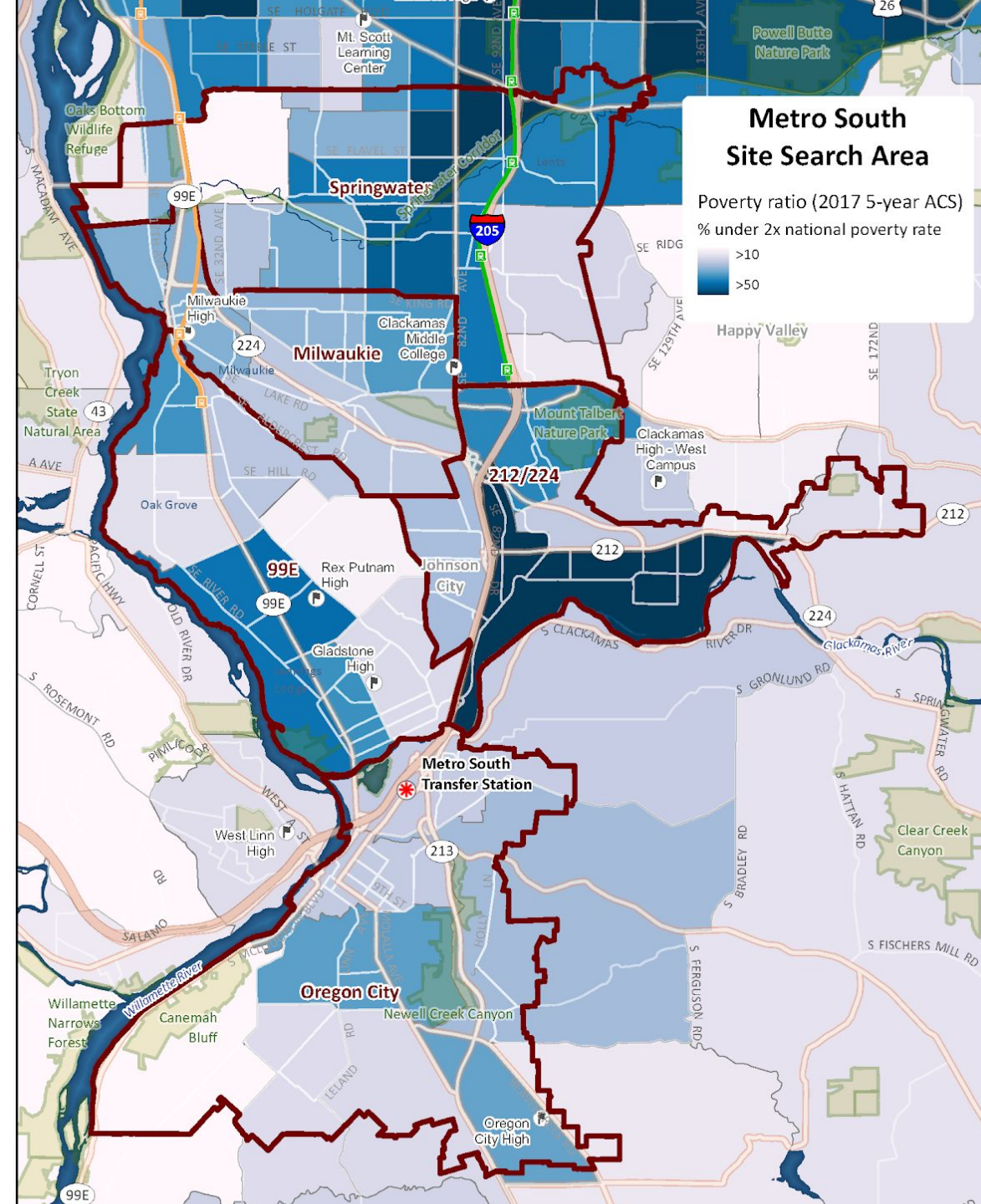
Siting area	20%
Clackamas County	17%
Metro region	28%



Low income

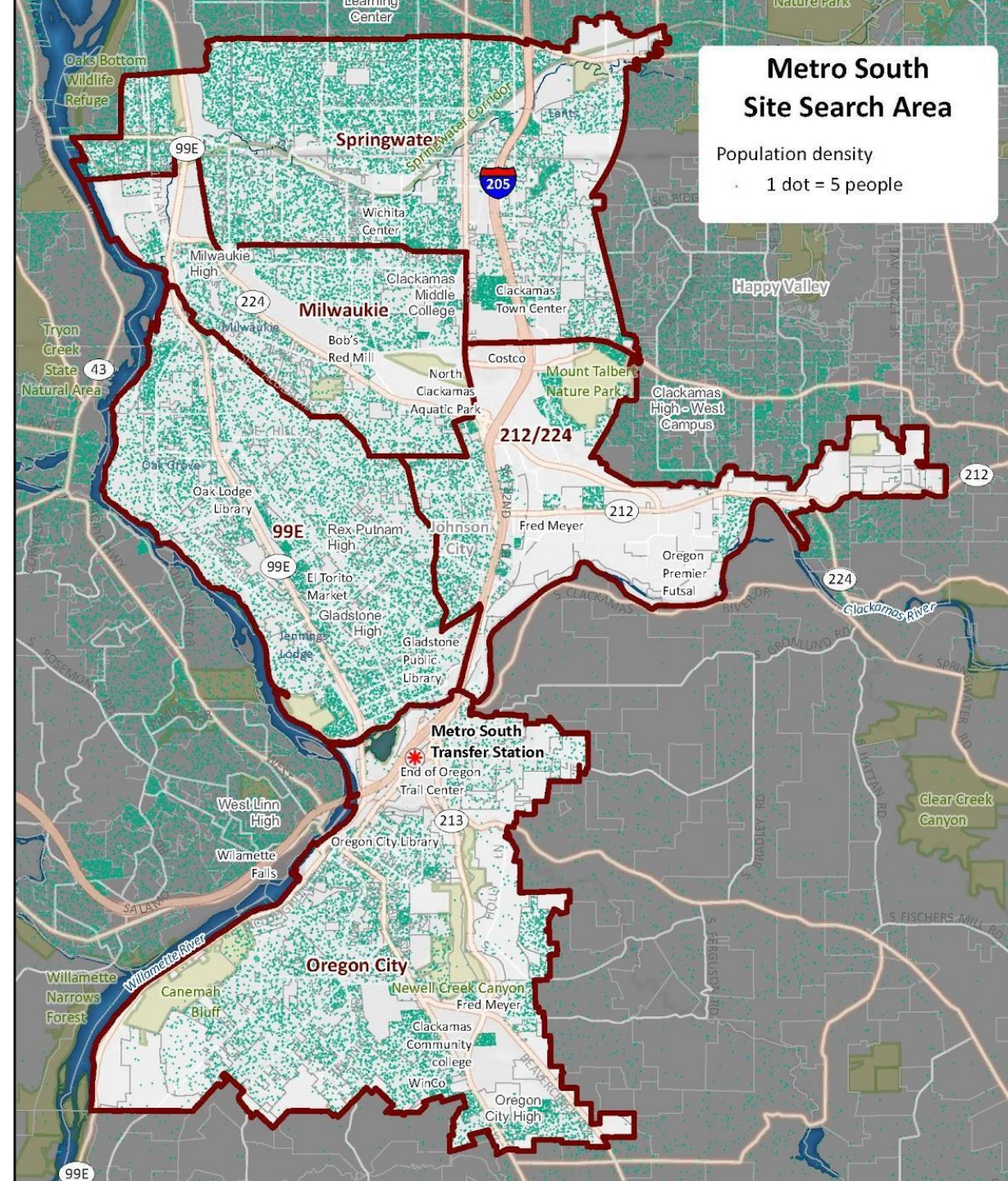
People in households with income two times lower than the federal poverty level

Siting area	30%
Clackamas County	23%
Metro region	30%



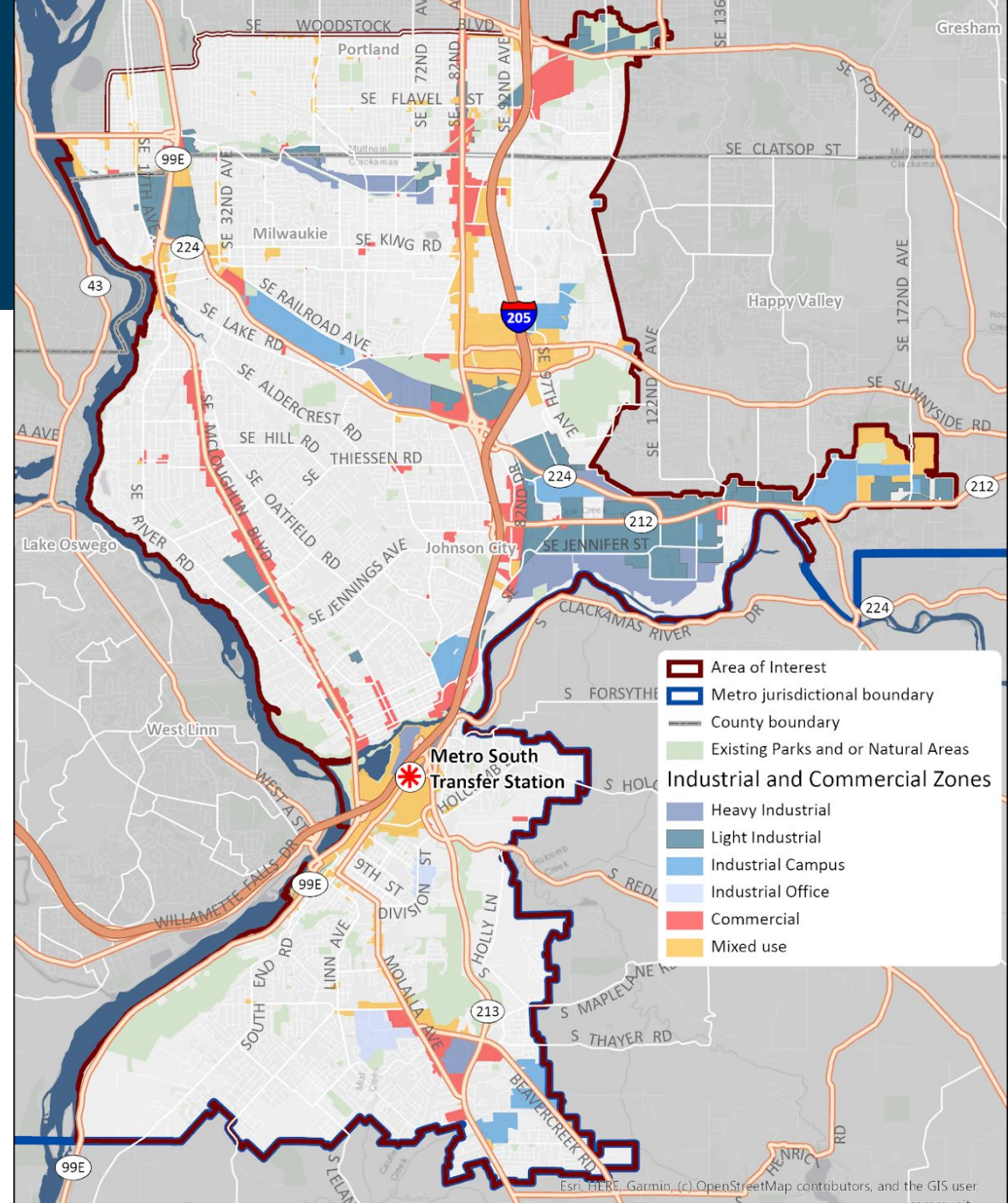
Population density

- 1 dot = 5 people
- Areas without dots are commercial and industrial zones, parks, schools, and other non-residential areas



Industrial and commercial zones

- Industrial properties more likely to allow a transfer station
- Larger concentrations along certain corridors like Hwy 224, SE 82nd and McLoughlin Blvd



Next steps

- Share draft analysis for input, including Metro South Community Advisory Group
- Incorporate input and share with Metro Council, stakeholders, general public

Discussion

- Questions about the analysis or the methodology used?
- What resonates or doesn't with your experience living and working in the siting area?
- How can this information be used to advance racial equity in this project?

*Break / descanso
back in 3 minutes*

oregonmetro.gov



Modern Transfer Stations:

locations, features, community services

How are new transfer stations assets to their communities?

Estaciones de transferencia modernas:

ubicaciones, características, servicios

comunitarios

North Transfer Station – Seattle WA



North Transfer Station – Seattle WA



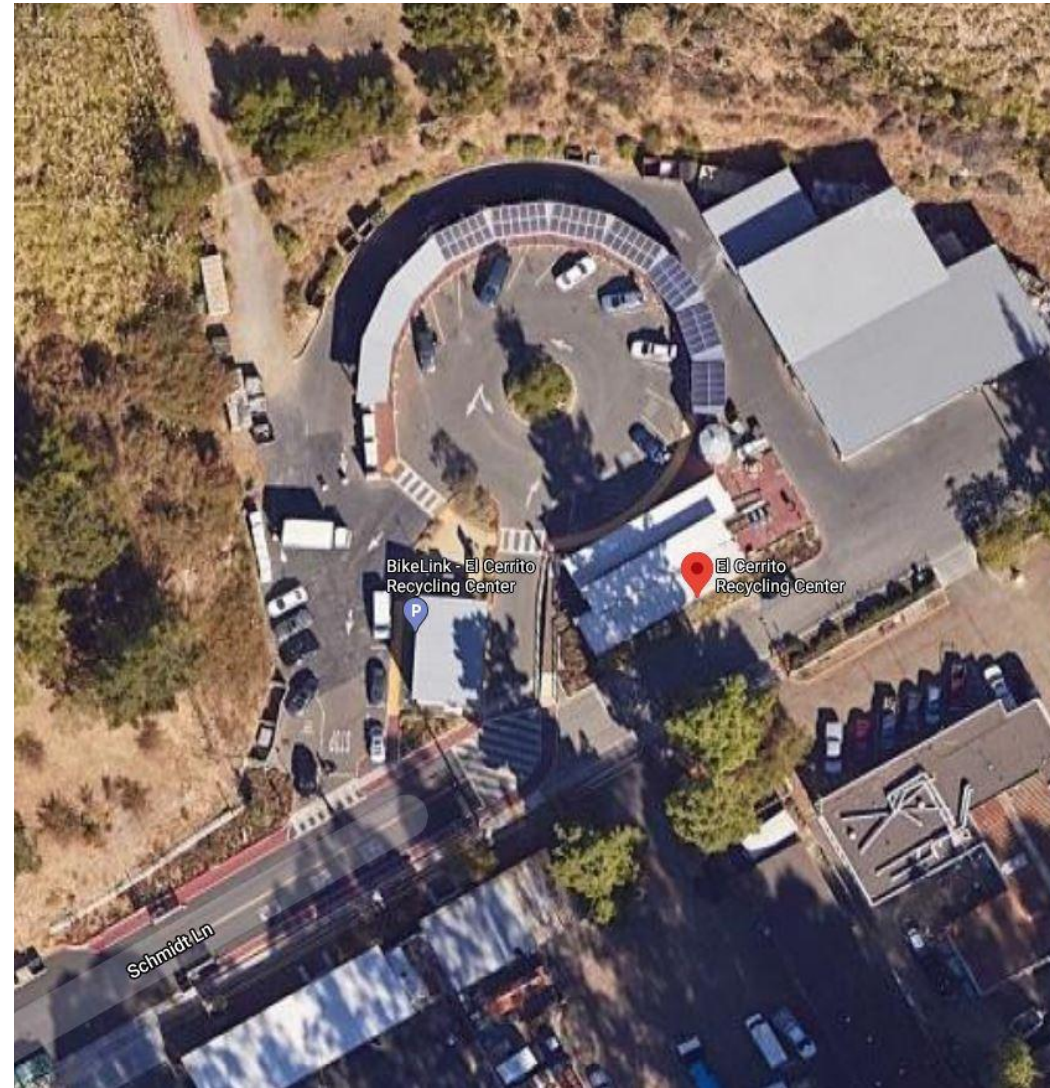
Factoria Transfer Station - King County



Sydhavn Recycling Center – Copenhagen, Denmark



El Cerrito Recycling Center - El Cerrito, California



Bow Lake Facility, King County



CHaRM Facility & "Recycle Row" in Boulder



Outdoor features

Características externas

Walkways, art
and landscaping

Senderos, arte y
paisajismo



Play structures and landscaping



Parkour and play equipment



Sound barriers and salvaged structures

Barreras de sonido y estructuras echas de materiales reciclados



Community gathering spaces



Public art
Arte público

Public art piece at Shoreline

Arte público en Shoreline



Reclaimed - Art by Jean Shin, North Transfer Station

RECLAIMED

Jean Shin
2016

By referencing the topography of the site before 1966 when the first North Transfer Station was built, *RECLAIMED* brings the memory of the landscape to the current Transfer Station plaza. The artwork expresses these natural forms through the use of industrial materials—10,000 linear feet of rebar that have been salvaged from this location during the demolition of the original transfer station building. Liberated from the architectural structure, the repurposed rebar create the organic, linear contours of the previously existing land masses. The three colorful sculptures are also connected by an installation of orange lines on the pavement that delineate the various walking paths through the plaza. *RECLAIMED* highlights the potential of waste material to be reimagined into a vibrant second life within the community, and echoes the sustainable principle of reuse at the transfer station. Through the work, the artist invites us to consider our impact on the environment both past, present and future.

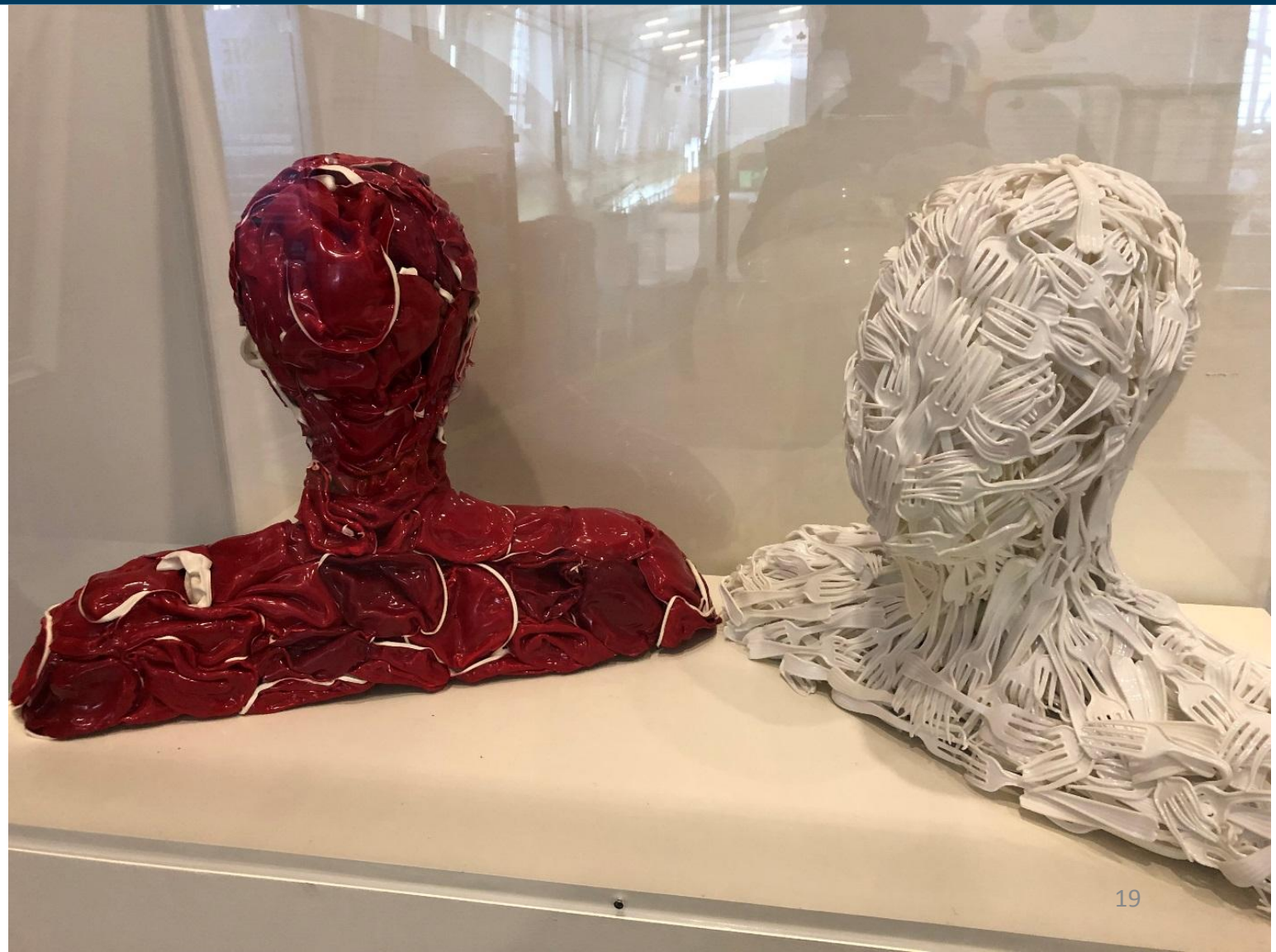
Commissioned with Seattle Public Utilities 1% for Art funds
Administered by the Seattle Office of Arts & Culture
City of Seattle, Ed Murray, Mayor

CAUTION
DO NOT
CLIMB



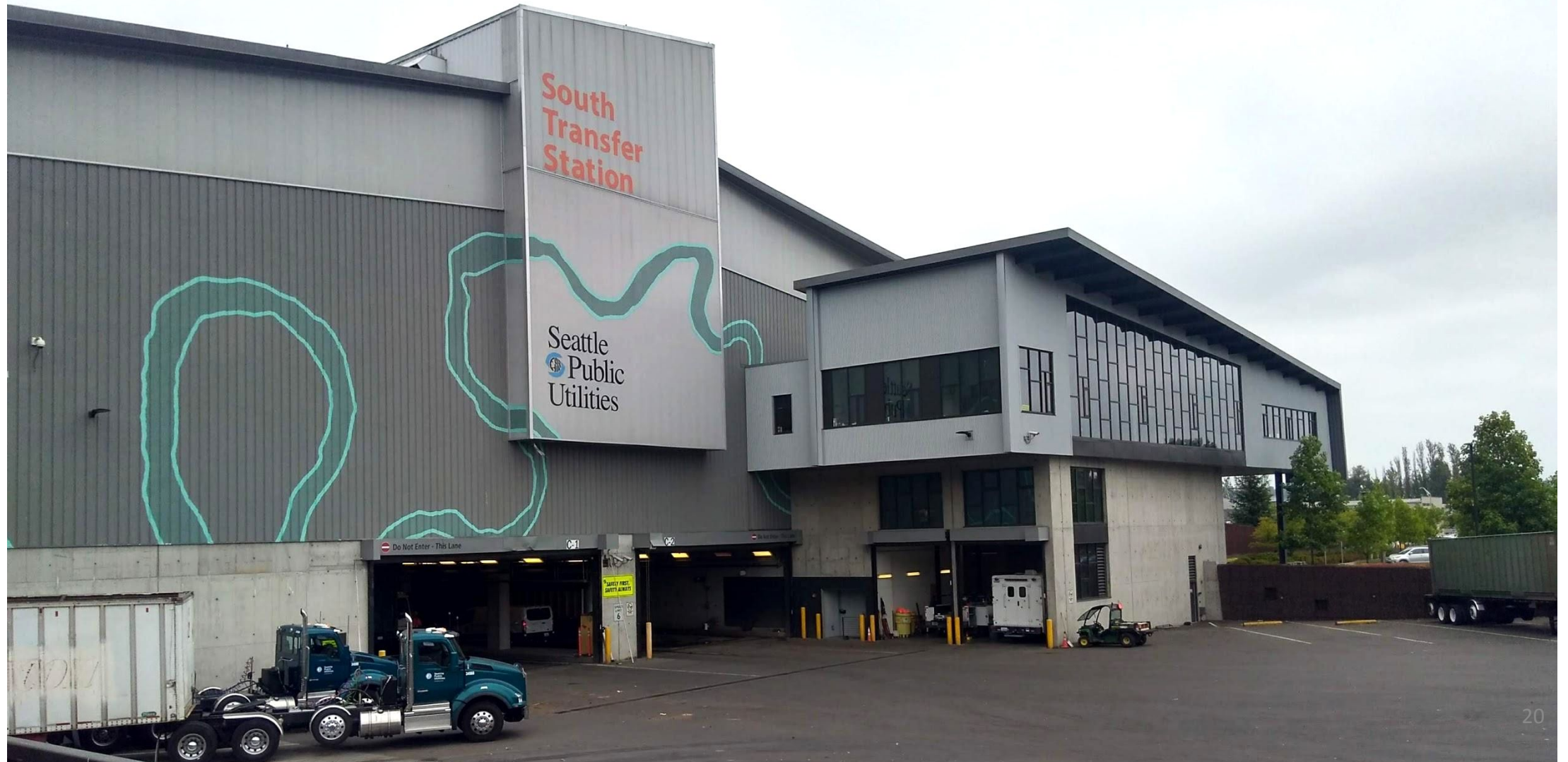
Public art at South Station

Arte público en South Station



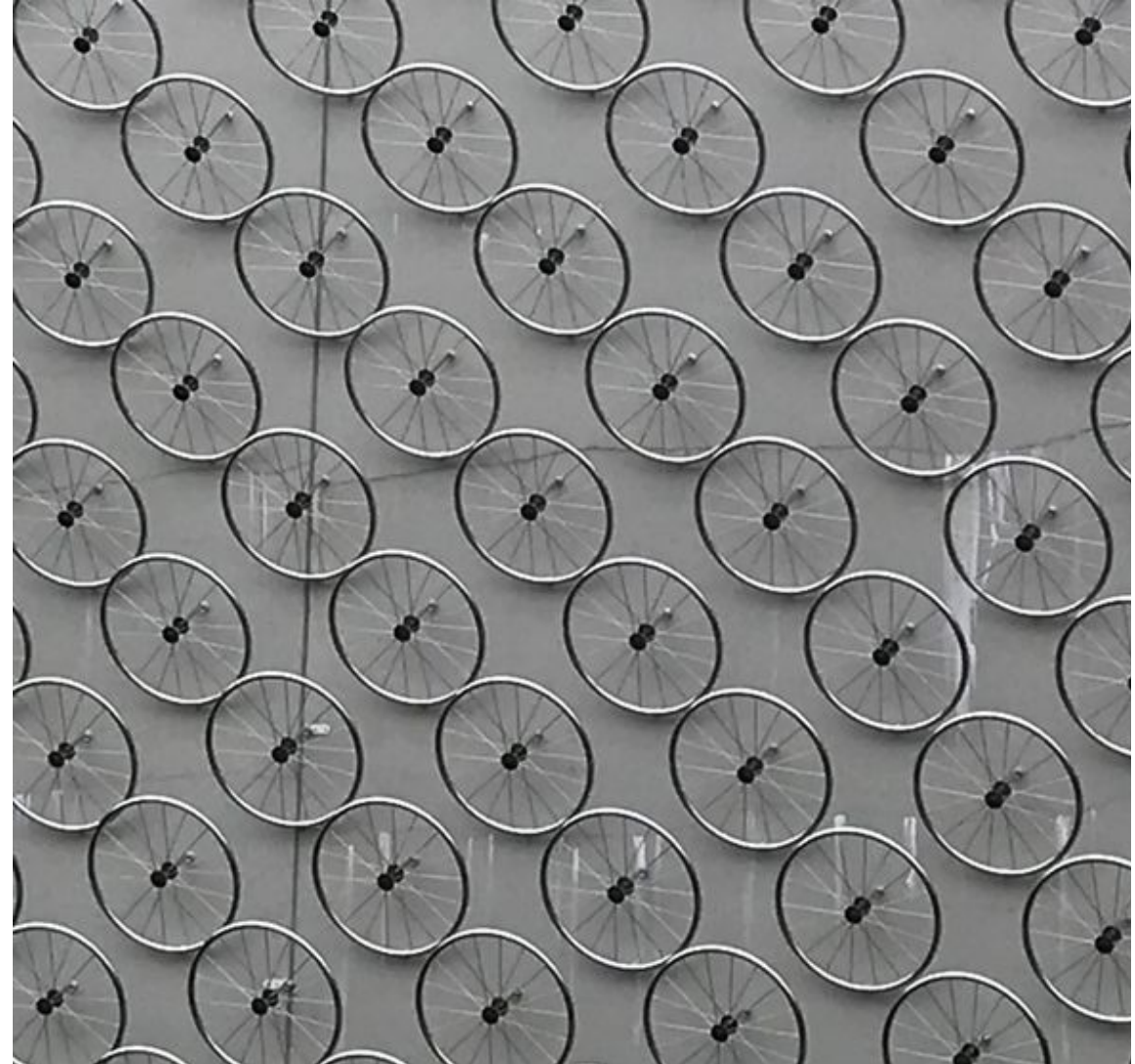
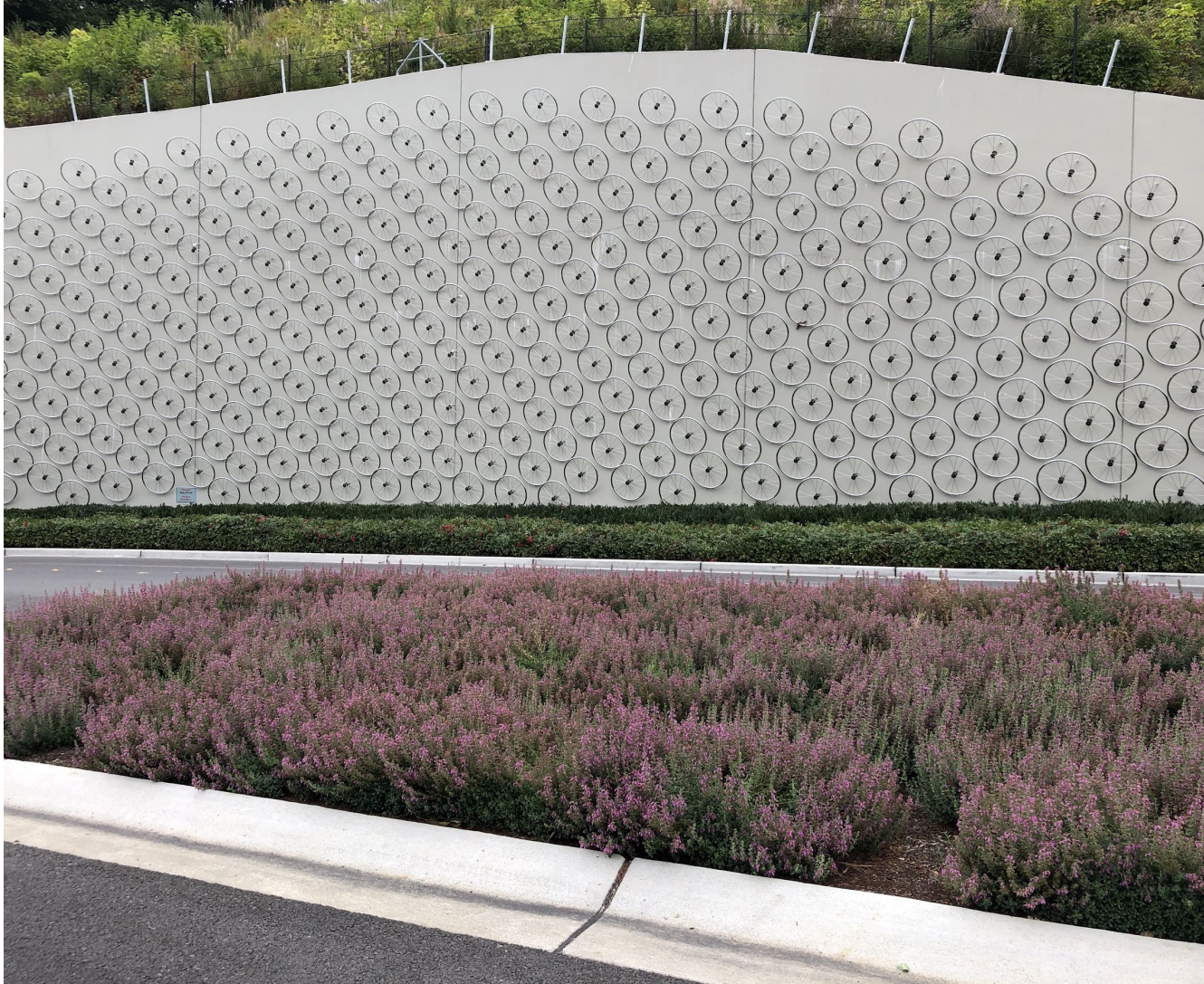
Public art at South Station

Arte público en South Station



Public art at Factoria Transfer Station

Arte público en la estación de transferencia Factoría



Education
Educación

Public viewing room | Sala de visualización pública



Public viewing room | Sala de visualización pública

I SPY WITH MY SORTING EYE

Can you spot waste that's not sorted properly on the tipping floor?

The more people sort waste at home, school, and work, the easier it is to send only garbage to the landfill.





**Recycling,
repair, and
reuse
workshops**

-
**Talleres de
reciclaje,
reparación y
reutilización**

Recycling, reuse and resale

How modern transfer centers help keep items out of the trash

Reciclaje, reutilización y reventa

Cómo los centros de transferencia modernos ayudan a mantener los artículos fuera de la basura

Drive through recycling center

Servicios de drive-through (para carros)



Drive up Recycling Drop Off | Depositos de reciclaje





**Recycling
options for
hard-to-recycle
materials**

**Opciones de
reciclaje para
materiales
difíciles de
reciclar**

Household Hazardous Waste disposal

Desecho de materiales peligrosos del hogar



Recycling Depot and Building Materials Store

Almacén de reciclaje y tienda de materiales de construcción



Exchange Zone | Zona de intercambios



Reuse Mall | Centro comercial de re-uso



Reuse Mall with recycling depot and household hazardous waste drop off



Reuse and repair shops + event space and cafe



Community Partnerships

Asociaciones comunitarias



**Employment
partnership**

**Asociaciones
de empleo**

Reuse Partnerships | Asociaciones para reciclaje





Reuse
partnership
Asociaciones
para reciclaje

Reuse/Repair Partnerships | Asociaciones para reciclaje



Repair fairs | Ferias de reparaciones



Workshop space for entrepreneurs

Talleres para empresarios



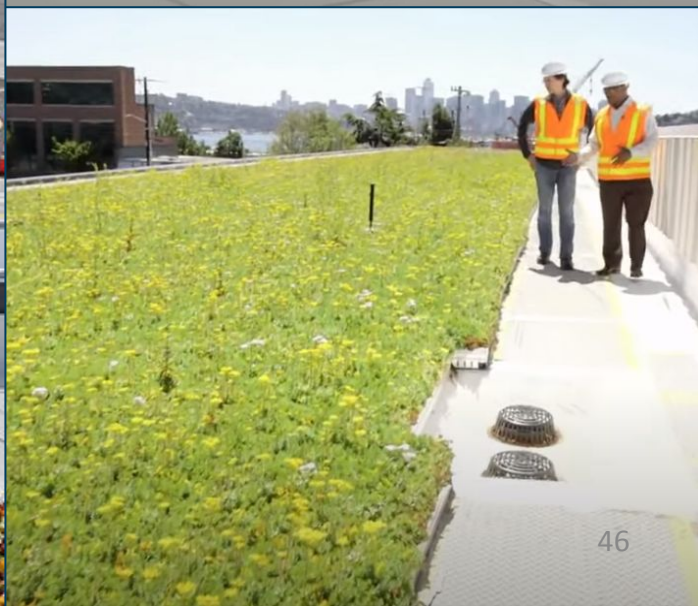
Art from trash, Metro's GLEAN partnership



Sustainable building features

Características de construcción sostenible

Green Roofs, Solar Panels | Techos verdes, Paneles solares



Natural Lighting, Skylights | Iluminación natural, Tragaluces



Rainwater Harvesting | Colección de lluvia



Native Landscaping, On-site Stormwater Management

Plantas nativas, gestión de aguas pluviales en el lugar



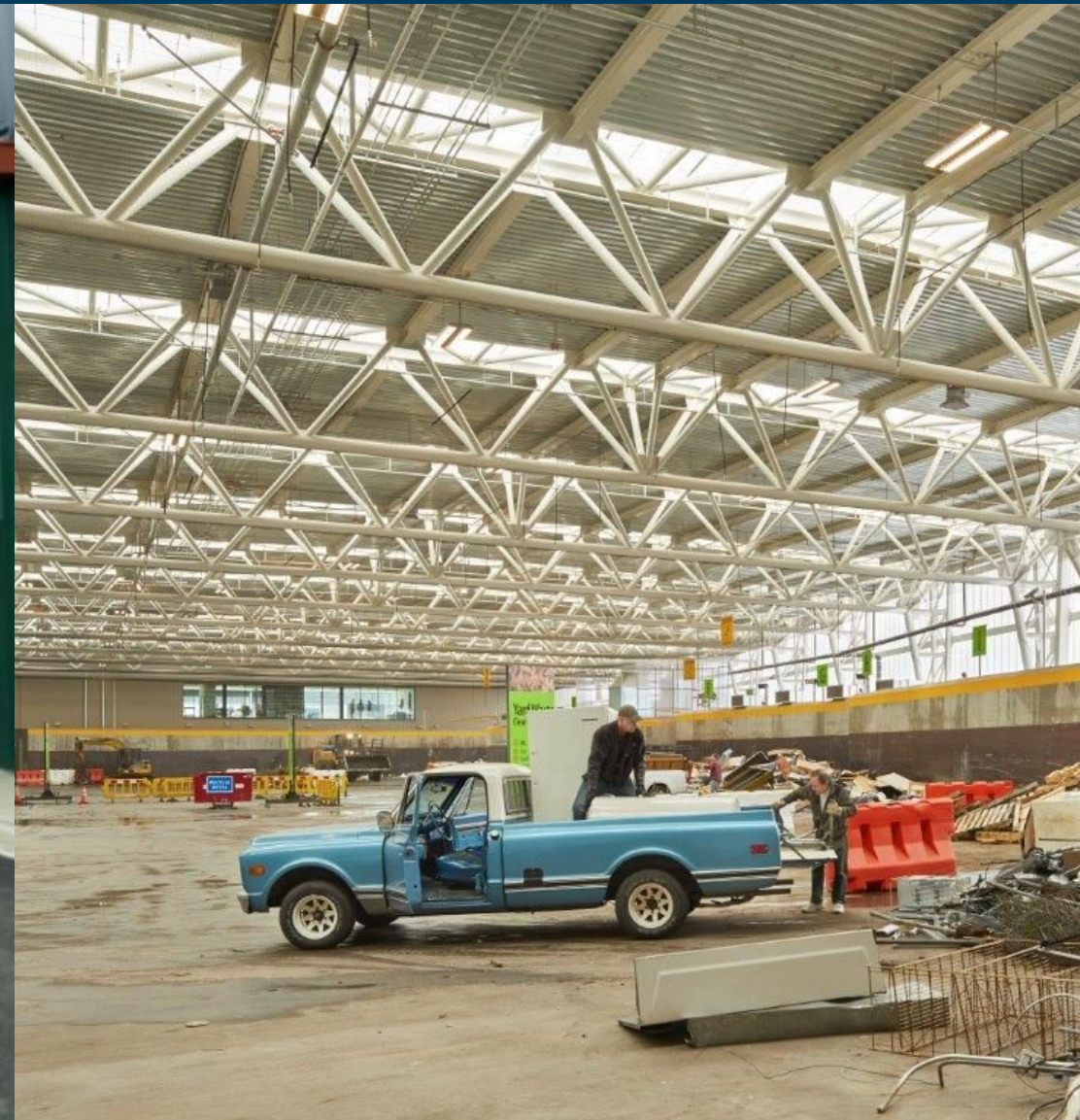
Employee Break Rooms, Amenities

Salas de descanso para empleados, y comodidades



Designed for safety and efficiency
*Diseño para la seguridad y la
eficiencia*

Separate customer entrances and unloading areas



Signage helps customers through facility

Señales para ayudar a los clientes



Large, flat tipping floors; enclosed building
Pisos grandes y planos; edificio cerrado



Flexibility of operations | Flexibilidad en operaciones



Separate buildings for different uses

Edificios separados para diferentes usos



Transport trucks have separate access Acceso independiente para los camiones



Transfer Station: Common Nuisances

Estaciones de Transferencia: Molestias
Comunes

Mitigating Nuisances at Transfer Stations

Mitigar molestias en las estaciones de transferencia

- Appearance of Facility
- Litter Control
- Odor
- Pest/Rodent Control
- Dust
- Noise
- Fire Suppression
- Traffic



Appearance | Apariencia



Appearance | Apariencia



Appearance | Apariencia



Appearance | Apariencia



Appearance | Apariencia



Litter Control | Control de basura en la calle



Litter Control | Control de basura en la calle



Litter Control | Control de basura en la calle

<https://drive.google.com/file/d/1vzH1wwARP4GalC4PdSGwTxgm2ME-ENHZ/view?usp=sharing>



Odor Control | Control de olor



Odor Control | Control de olor



Pest control | Control de roedores



Pest control | Control de roedores



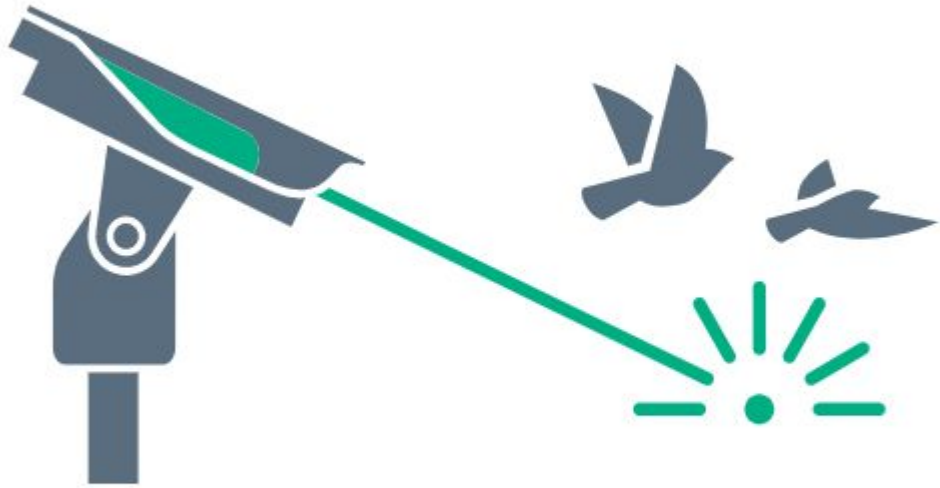
Pest control | Control de aves



Pest control | Control de aves



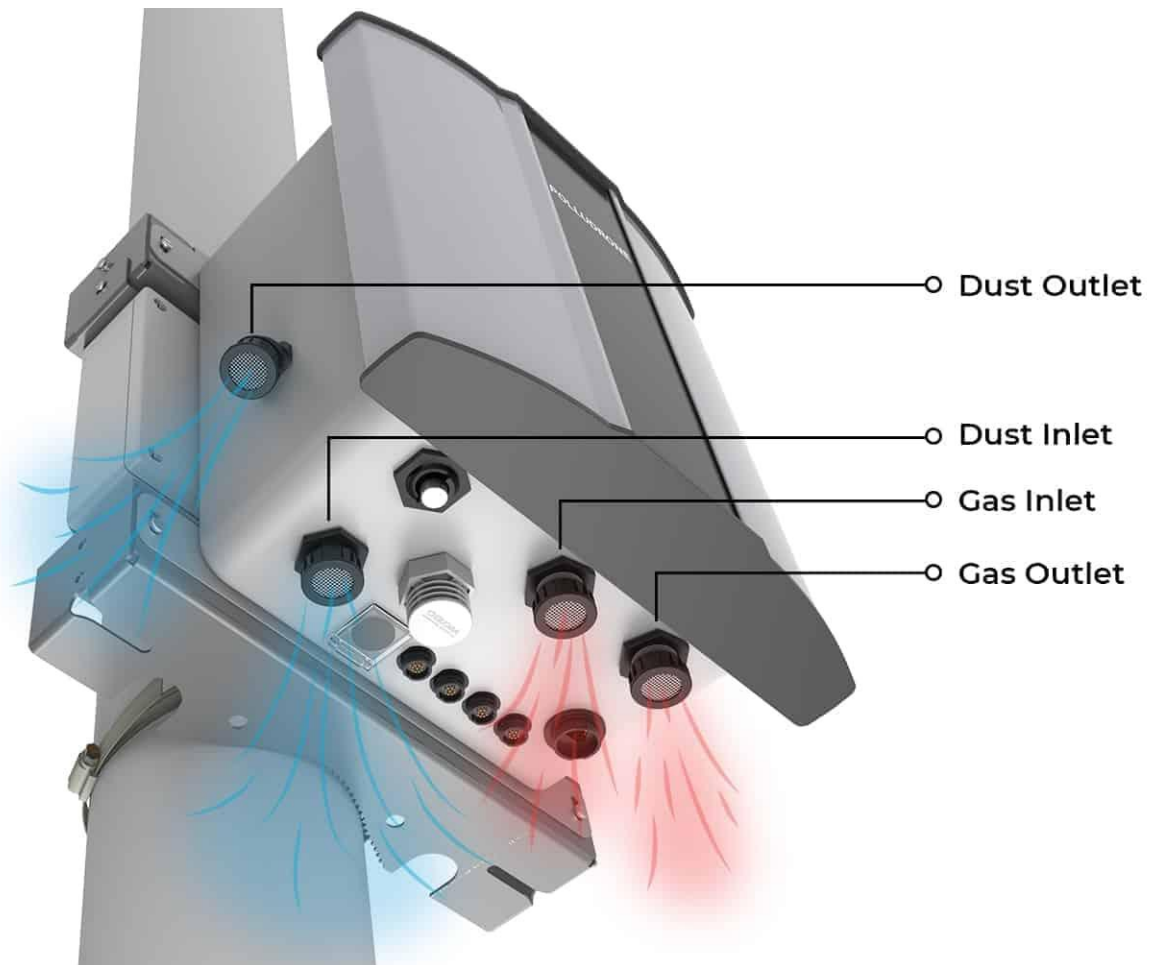
Pest control | Control de roedores



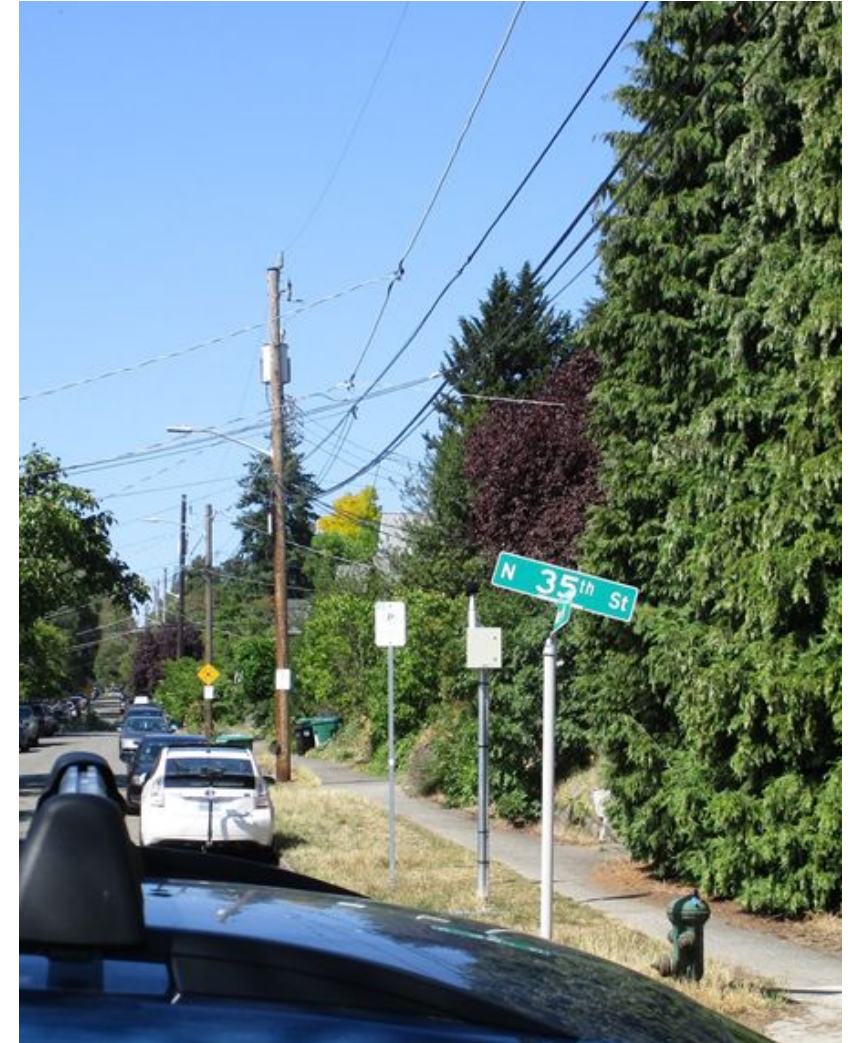
Dust Control | Control de polvo



Dust Control | Control de polvo



Noise Control | Control de ruidos

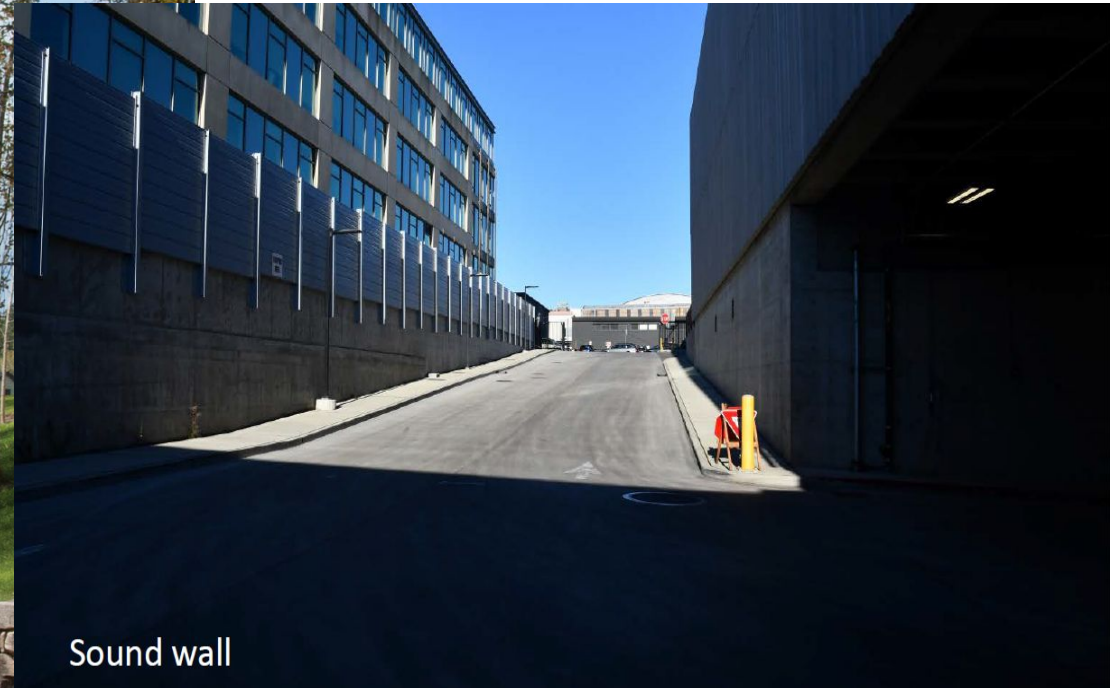




Noise Control

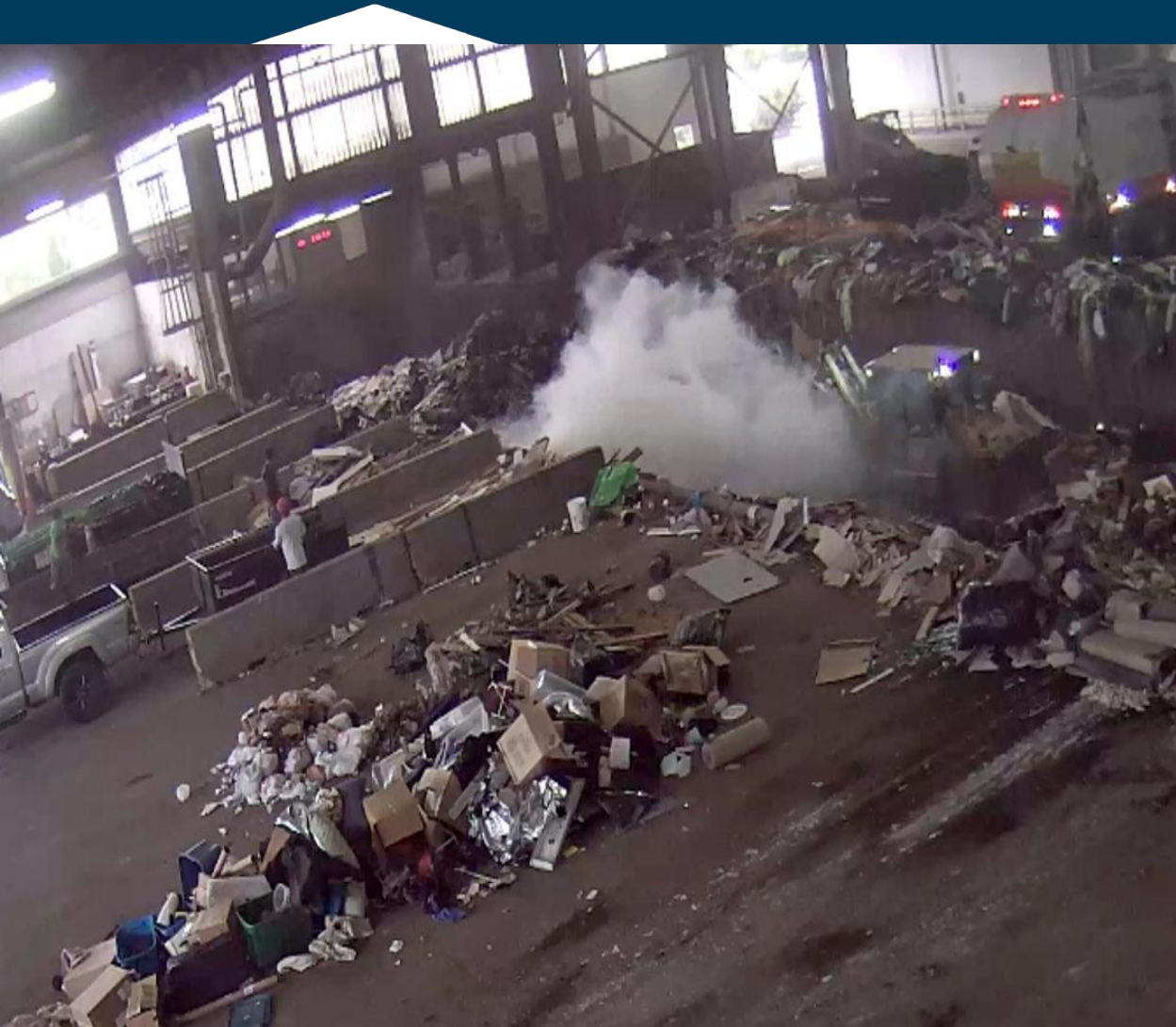
Control de
ruidos

Noise Control | Control de ruidos



Sound wall

Fire Suppression | Control de incendios

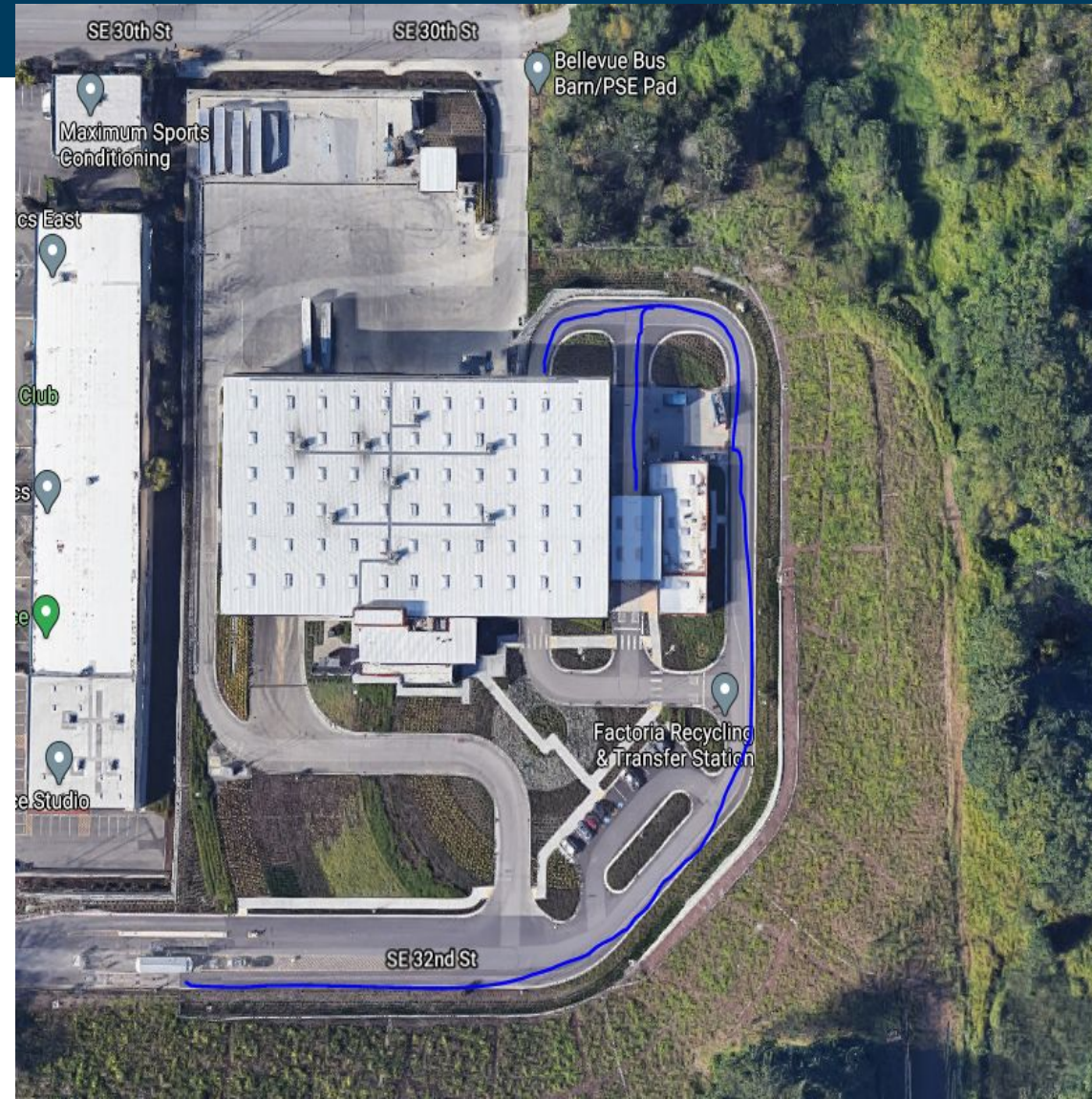


VIDEOS

Fire Suppression | Control de incendios



Traffic Impact Mitigation | Mitigación del impacto del tráfico



Traffic Impact Mitigation | Mitigación del impacto del tráfico



Good Neighbor Policies | Ser un buen vecino



Thank You! | ¡Gracias!

Project Team

Estee Segal

Principal Solid Waste Operations Planner
Metro – WPES

Estee.Segal@oregonmetro.gov

Dan Blue

Systems Planning Manager
Metro – WPES

dan.blue@oregonmetro.gov

Barbara Edwardson

Property Acquisition Specialist
Metro – WPES

Barbara.Edwardson@oregonmetro.gov

Communications Team

Chevy Pham

futuresouth@oregonmetro.gov

Gloria Pinzon

Gloria.Pinzon@oregonmetro.gov

Jairaj Singh

Unite Oregon
jairaj@uniteoregon.org

Website: oregonmetro.gov/futuresouth

Email: futuresouth@oregonmetro.gov