

Future Metro South Recycling and Transfer Center

Community Advisory Group, Meeting #1

08.13.2020



Helpful tips before we start the meeting

- This meeting will have simultaneous interpretation. Be sure to choose the language in which you wish to listen to. If you do not choose a language, you may miss out on some audio throughout the meeting.
- As a reminder, the meeting is being recorded.
- Please remain muted when not speaking, to limit background noise.
- If you wish to use the raise hand feature, it is located when you hit participants in your settings bar, or in “more” on a mobile device.
- You may also get our attention with a physical queue or in the chat feature.

For members of the public who wish to reach out to us please email **futuresouth@oregonmetro.gov**

What is Metro?



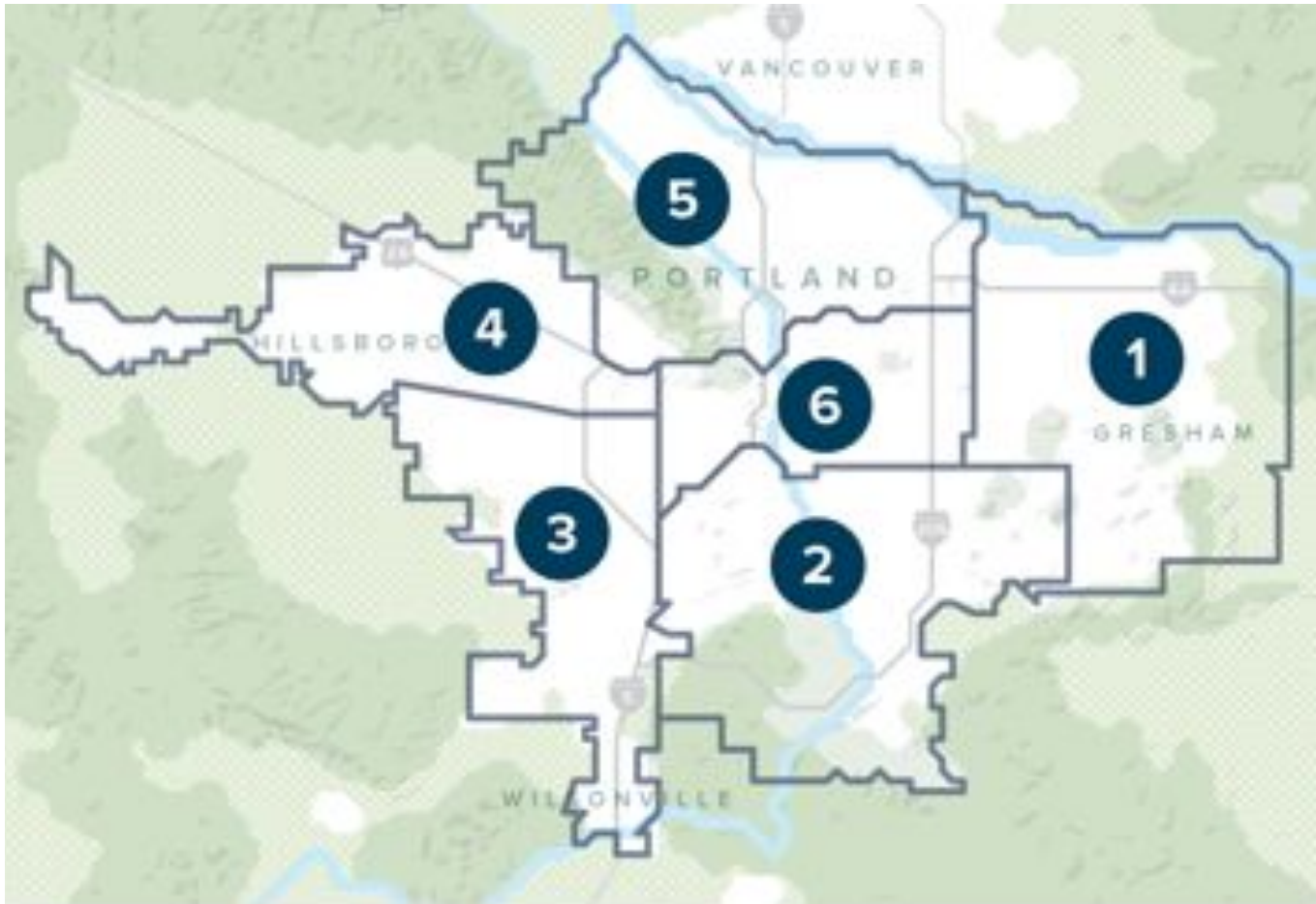
Metro Council



Metro Council

Sam Chase, District 5; Shirley Craddick, District 1; Juan Carlos González, District 4; Council President Lynn Peterson; Craig Dirksen, District 3; Christine Lewis, District 2; Bob Stacey, District 6;

Who we serve



Metro serves more than 1.5 million people in 24 cities and three counties.

Metro Councilor Christine Lewis



Christine Lewis represents District 2, which includes the cities of Gladstone, Johnson City, Lake Oswego, Milwaukie, Happy Valley, Oregon City, Rivergrove, West Linn, a portion of Southwest Portland and unincorporated parts of Clackamas County.

Unite Oregon



Mission:

Led by people of color, immigrants and refugees, rural communities, tenants and people experiencing poverty, we work across Oregon to build a unified intercultural movement for justice.

We work to build community power through
**community organizing, leadership development,
civic engagement and meaningful policy change!**

Community Partnership

- **Purpose:** work together to involve the community in this project.
- **Roles**
 - Metro: project lead for the proposed Future Metro South recycling and transfer center.
 - Unite Oregon: community engagement partner and ambassador on behalf of the community.

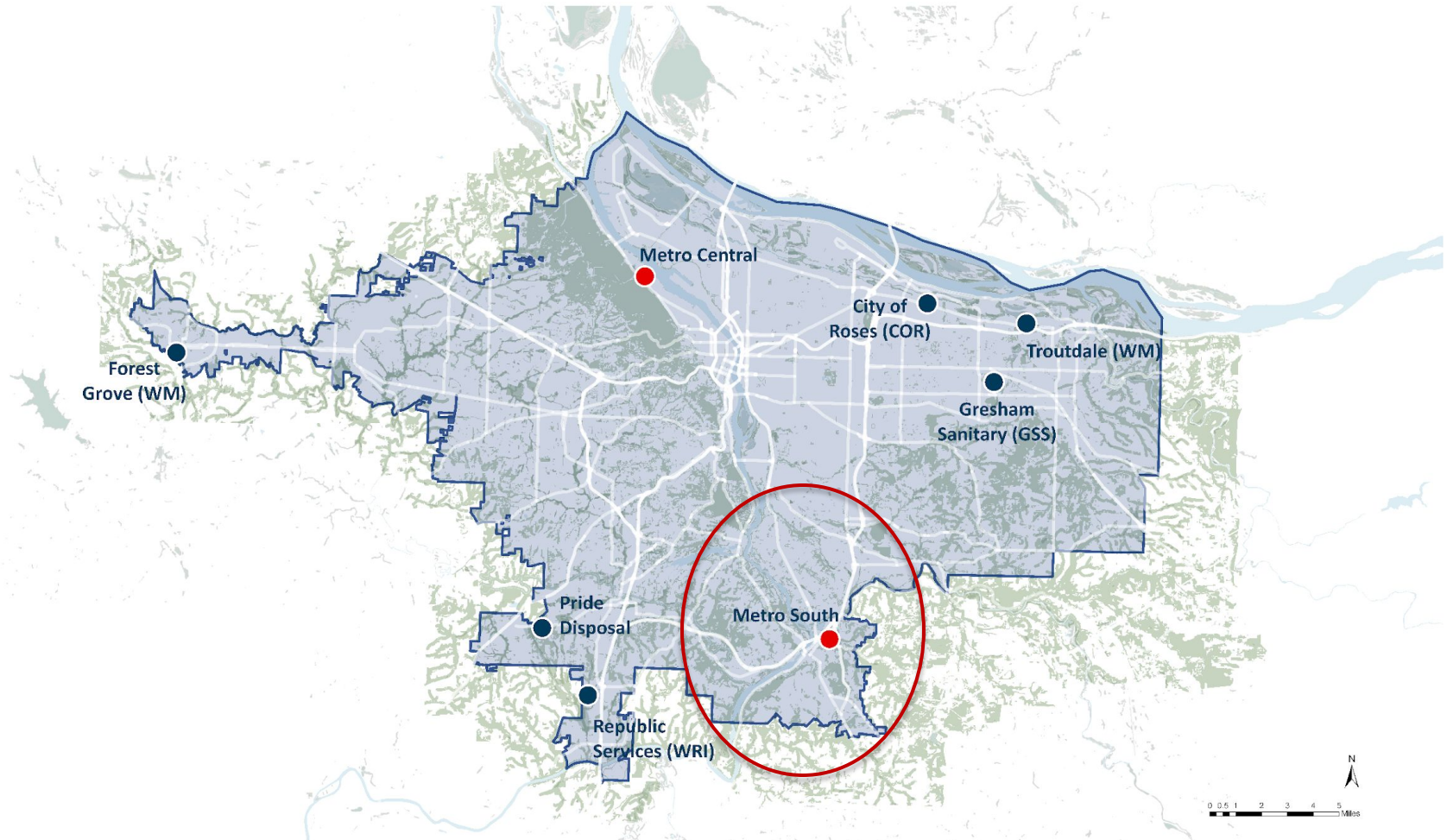
Community Agreements

- Take care of yourself
 - Stretch, drink water, rest
- Take space/make space
- One mic, one speaker
- Stay present
- Speak from your own experience
- Embrace curiosity
- Don't stay confused (ask questions)
- Interrupt oppression: "Ouch! Oops!"
 - acknowledge impact of words/actions, take responsibility
- Expect unfinished business

What is a Transfer Station?



Regional Garbage and Recycling System



Metro South Transfer Station



However...there are challenges



Metro South is too small to serve all its current and future customers at the existing site.

Current challenges include....

- 30-year-old facility
- Building deficiencies
- Long customer wait times
- Traffic stretches off-site
- On-site safety issues
- Low recycling & recovery
- No space for organics



Metro South Recycling & Transfer Center Project

- An investment of \$60-\$100 million to build a new, modern, efficient garbage & recycling center.
- The facility will offer living-wage jobs, community services and education, as identified by the community.
- The community will help guide the planning, design and construction.



Factoria Recycling & Transfer station Bellevue, WA



Role of the Community Advisory Group

Your participation will inform Metro about:

1. The level of support there is for the proposed project in Clackamas County.
2. What you want Metro to consider as properties are considered for purchase.
3. The potential impact, challenges and opportunities to your community.



Proposed Meeting Topics

Proposed Topics

- **Basics of the garbage and recycling system**
- **Introduction to transfer stations: services, functions and the community**
- **Proposed Project: finding a suitable location**
- **2030 Regional Waste Plan**
- **Environmental Justice**
- **Training: how to give public testimony**

Temas Propuestos

- **Conceptos básicos del sistema de recolección de residuos y reciclaje**
- **Introducción a las estaciones de transferencia: servicios, funciones y la comunidad**
- **Proyecto propuesto: buscar una propiedad adecuada**
- **Plan Regional de Residuos 2030**
- **Justicia Ambiental**
- **Capacitación: cómo dar testimonio público**

Proposed Meeting Topics

Topics from CAG member survey

- Transportation access
- Cost to taxpayers
- Reduce dumping on the street
- Options for community education about recycling and the impact of our waste on the environment
- Organizations or individual who can use or reuse items.
- Future services: Uses for food waste, school partnerships, repurposing plastics.

Thank You!

Project Team

Estee Segal

Principal Solid Waste Operations Planner
Metro – WPES

Estee.Segal@oregonmetro.gov

Dan Blue

Systems Planning Manager
Metro – WPES

dan.blue@oregonmetro.gov

Barbara Edwardson

Property Acquisition Specialist
Metro – WPES

Barbara.Edwardson@oregonmetro.gov

Communications Team

Chevy Pham

futuresouth@oregonmetro.gov

Gloria Pinzon

Gloria.Pinzon@oregonmetro.gov

Jairaj Singh

Unite Oregon

oregonmetro.gov/futuresouth

futuresouth@oregonmetro.gov

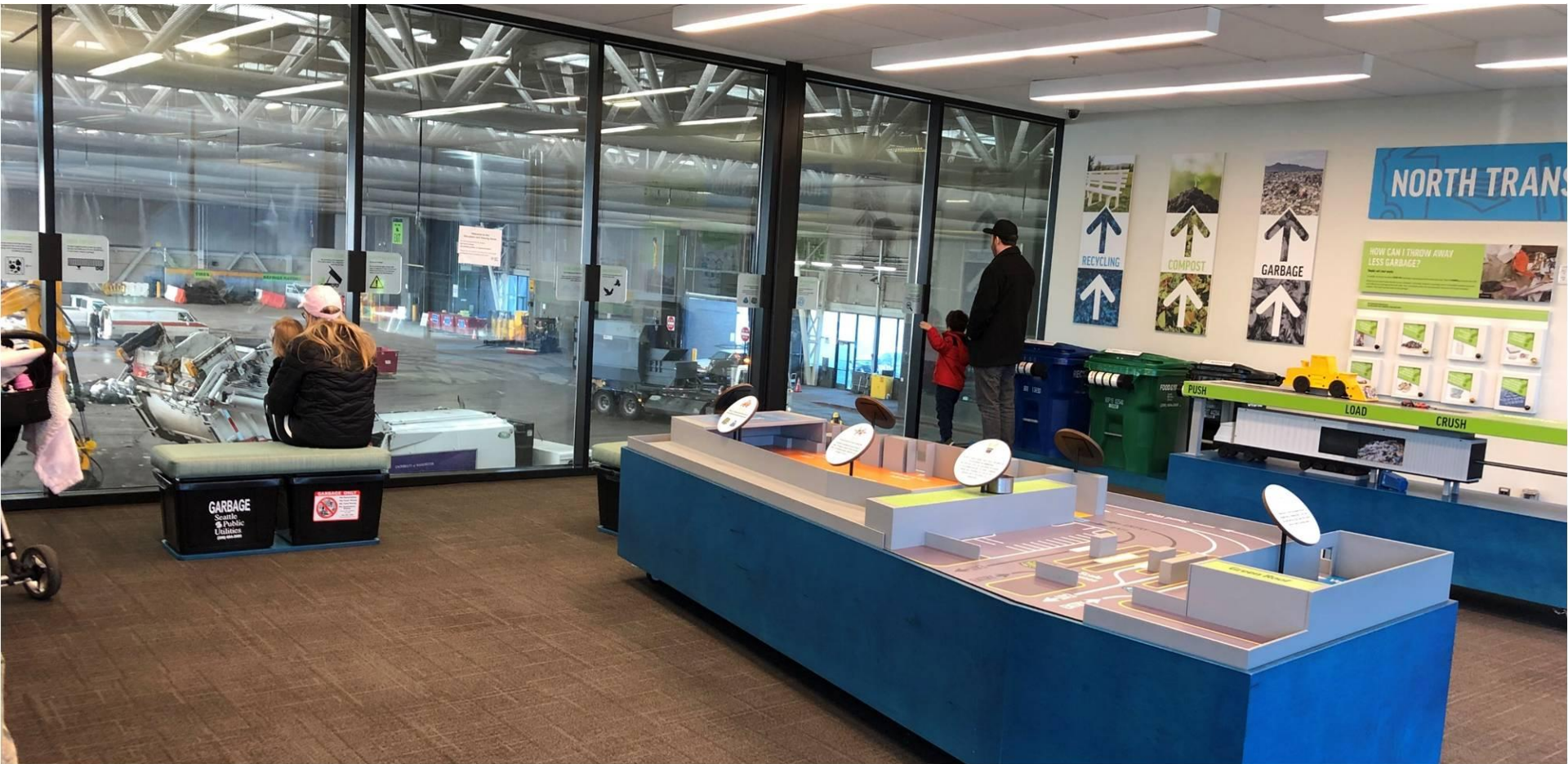


Slides after this are extras

Seattle North Transfer Station



Seattle North Transfer Station



Planning for the Future

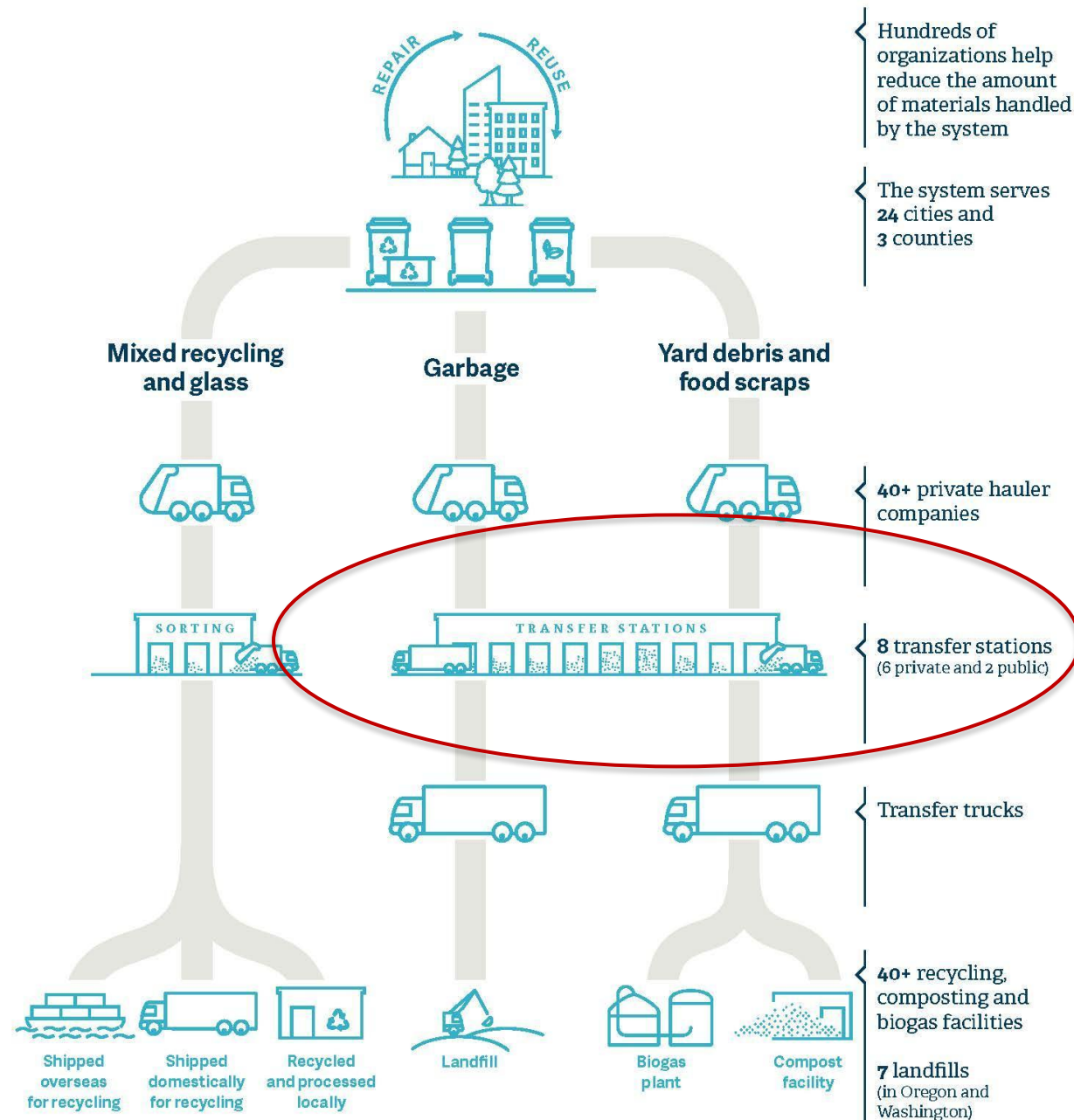
- Metro's 2030 Regional Waste Plan guides us to enhance and expand services on a new site.
- Equity, health and the environment are drivers for a new facility.



Project Phases

Phase 1	Phase 2	Phase 3
* Community feedback Finding a location	Identify Community A	

Regional Solid Waste System



Metro's Waste Prevention & Environmental Services (WPES) Department



Metro South Transfer Station Outdated & Constrained...



- 30-year-old facility
- Building deficiencies
- Long customer wait times
- Traffic stretches off-site
- On-site safety issues
- Low recycling & recovery
- No space for organics

Decision-making

Add graphic showing:

- Steering Team
- Project Manager/Sponsor
- Community Advisory Group & broader community
- Metro Council
- >> Then add other bodies like CORE, RWAC

Slides Proposed for 2nd CAG Meeting – Project Context Intro



Metro

Metro South Recycling & Transfer Center Project

Project Introduction – May 2020

Metro South Transfer Station Today...

- Serves 250,000 customers/year; 800 customers/day.
- Transfers 18% of region's waste to landfill in Gorge.
- Collects ~20% of region's residential organics.
- Receives ~175K gallons of latex paint to recycle, resell.
- Provides \$300-350K in grants to community.



Services: Commercial Garbage Transfer

- Commercial garbage haulers offload waste from collection routes.
- Waste is compacted and loaded on to transfer trailers to transport to a landfill.



Services: Public Self-Haul



- Dry waste (construction debris).
- Bulky waste (furniture, plastics).
- Wet waste (wet garbage).
- Recycling (wood, metal, etc.).
- Organics (yard, food).



Services:

Household Hazardous Waste Drop-Off



- Paints, stains
- Medical sharps
- Batteries
- Light bulbs
- Pesticides
- Motor oil
- Cleaning
- Propane

Planning for the Future

- Metro's 2030 Regional Waste Plan supports expansion.
- Focus on equity, health and the environment.
- Site opportunities/availability will drive services.



How did we get here?

- Reviewed historic data, studies and surveys.
- Metro New Facilities Steering Team established.
- Monthly meetings with Oregon City/Clackamas County.
- Established siting area, base and functional criteria.
- Investigating sites that rank high with current criteria.

Background, Studies

- More than 8 studies over last 15 years to assess Metro South.
 - Growth in self-haul customers.
 - Increasing traffic, safety issues.
- Two self-haul customer surveys.
(2008, 2019)
 - Customers appreciate location, cost, service.
 - Add recycling, reuse options.



Regional Waste Plan Engagement

What we heard was most important to community:

- Quality services.
- Information and education.
- Garbage and recycling operations.
- Jobs, training and business opportunities.

Siting Criteria Approach

**Basic
Needs
(Base,
Initial
Criteria)**

**Other
Attributes
(Technical,
Secondary
Criteria)**

**Community
Attributes
(Community
Criteria)**

Basic Needs for a Project Site

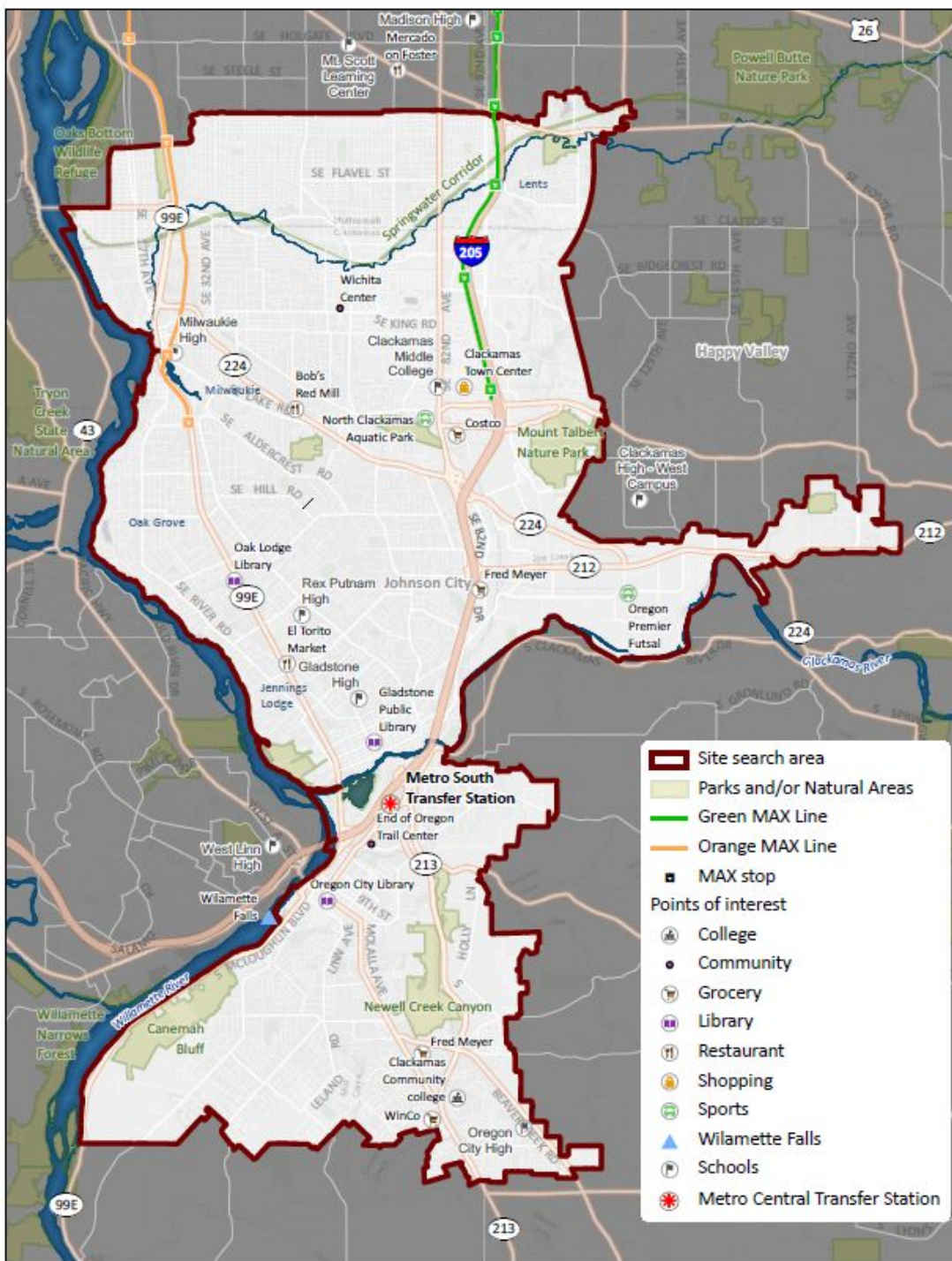
Site Need	Description
1) Within Siting Area	Site is within established siting area (previous map).
2) Zoning Allows Use	Site is zoned Industrial, Commercial, or Mixed Use.
3) Size Allows Use	Site is at least 7 acres (SH); Site is at least 12 acres (full-service).

Metro South Siting Area

Placeholder for Map....

- Based on demand for services.
- Focused on allowed land use.
- Focused on customer access.

Metro South Siting Area with Community Identifiers



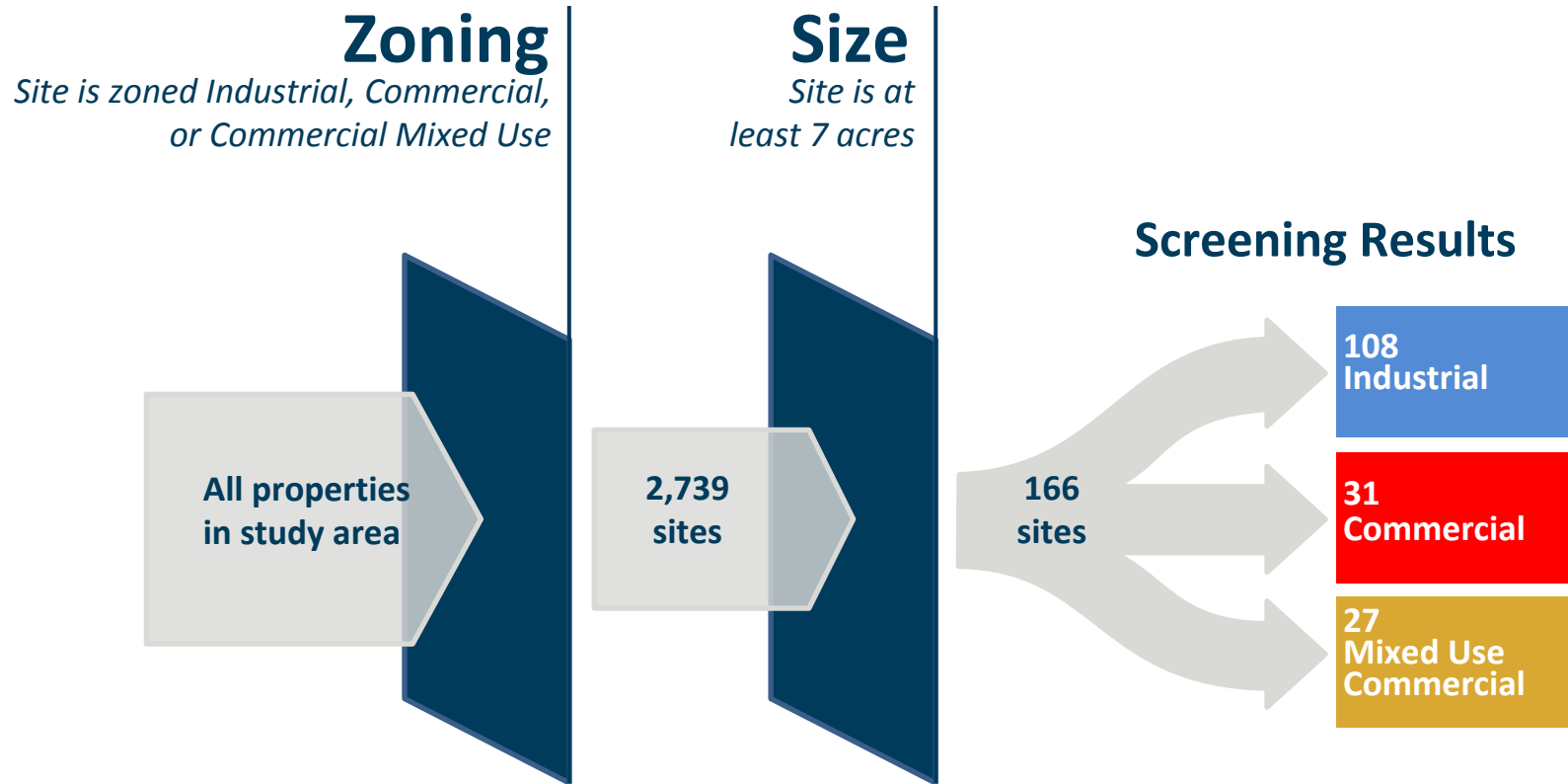
- Industrial
 - Heavy
 - Light
 - Campus
- Commercial
- Mixed Use



Site Size

Placeholder for map of current facility to show size

Site Search Initial Results



Other Desired Site Attributes

- 1) Minimize Community Impact
- 2) Minimize Environmental Impact
- 3) Ensure Accessible/Convenient Location
- 4) Ensure Project is Feasible
- 5) Ensure Project Meets Operational Needs

Minimize Community Impact

Surrounding land uses and zoning are compatible.

Site is located away from sensitive users like schools, parks and hospitals.

Site is not a protected site of historical, archeological or cultural significance.

Minimize Environmental Impact

Site is outside of 100-year flood plain.

Site contains a manageable amount of critical areas.

Water table beneath the site is conducive to the use.

Ensure Accessible/Convenient Location

Site is accessible from I-205, main transportation corridor.

Site is proximate to existing Metro South transfer station.

Site is appropriate distance from other private self-haul facilities.

Location is near mass transit for retail and employee accessibility.

Ensure Project is Feasible

Land-use approval for project is obtainable from local government.

Site is for sale or negotiable.

The cost of purchasing site is reasonable.

Site Meets Operational Needs

Site has sufficient space for onsite traffic flow - roadways, queuing and parking.

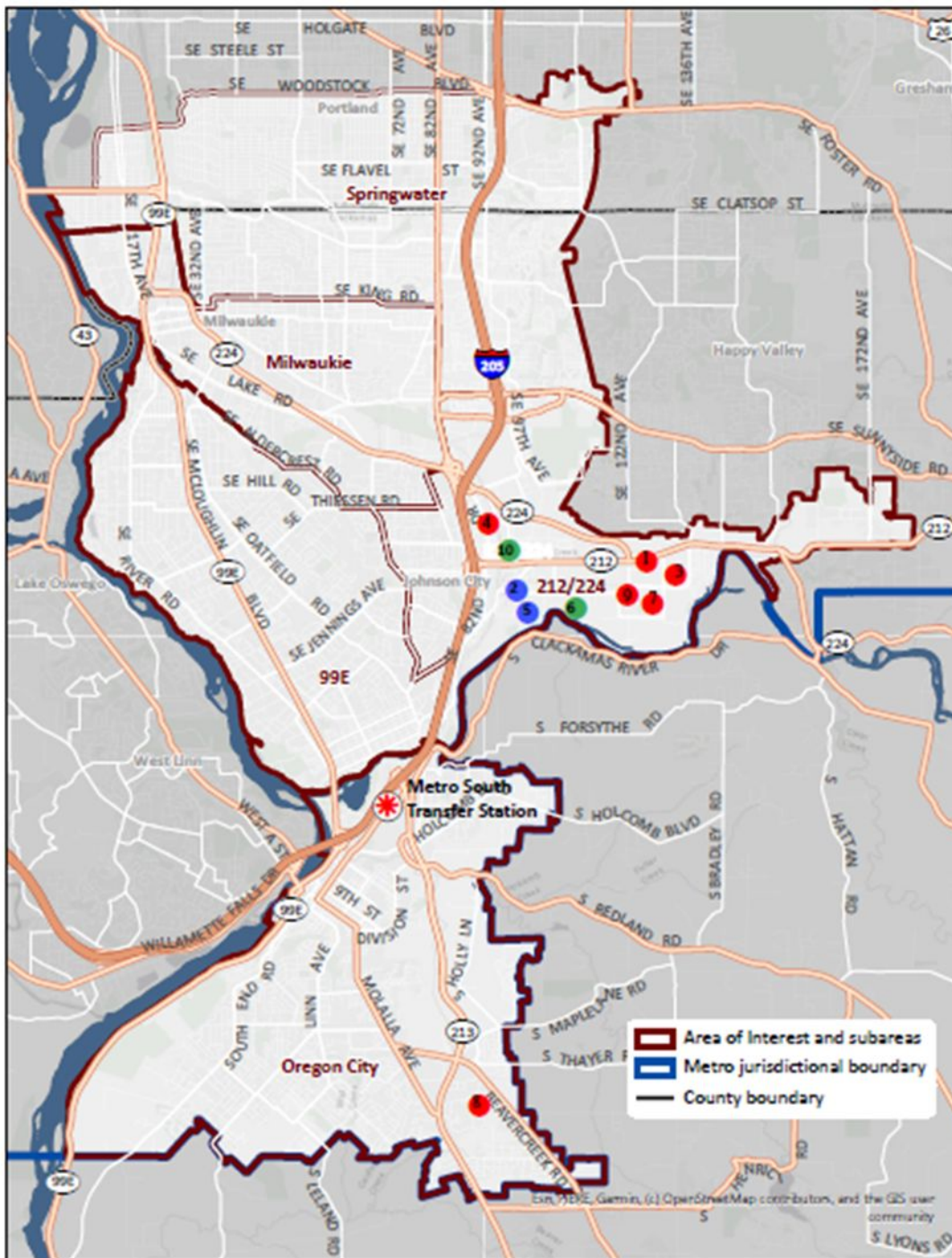
Site is easy to get to, with good entrance/exits, limited cross-traffic and surrounding roads can handle increased traffic.

Site shape is relatively square and has no obstacles cutting across it such as rivers, creeks, easements or freeways.

Site provides ability for expansion.

Site is relatively flat or gently sloping.

Metro South – Top 10 Sites Ranked with Above Needs



Top 10 Sites	Acres	Local Zoning	Score with Ranking
1	26.6	LI	87
2	14.1	LI	85
3	11.0	LI	84
4	10.7	LI	84
5	45.6	GI	83
6	25.9	GI	83
7	21.2	GI	82
8	10.8	CI	82
9	16.8	LI	82
10	12.3	LI	81
	Confirmed no interest		
	Pending communication		
	Possible interest		

Siting Criteria Approach

**Basic
Needs
(Base,
Initial
Criteria)**

**Other
Attributes
(Technical,
Secondary
Criteria)**

**Community
Attributes
(Community
Criteria)**

Expected Elements & Benefits

Project Elements	Benefits
Modern, efficient, innovative facility	Environment, Health
On-site jobs, workforce training, apprenticeships	Jobs, Investment
Community partnerships for recovery, reuse, repair, education	Social Equity, Partnerships
Features could include public art, landscaping, recreation	Community Amenities, Cultural Recognition
Grants for local/host community	Service Equity

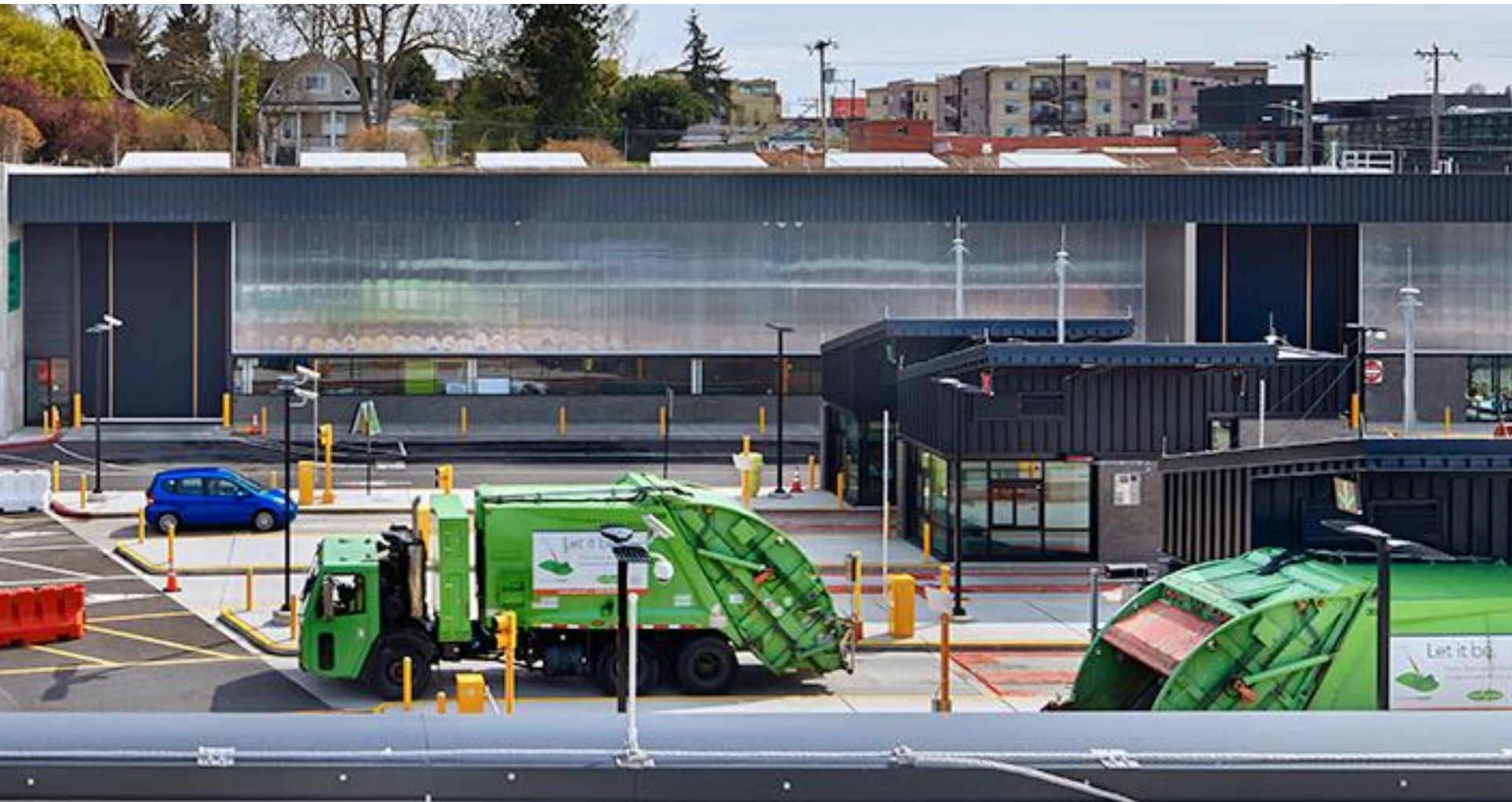
Factoria Recycling & Transfer Station Bellevue, WA



El Cerrito Recycling Center



Seattle North Transfer Station



Seattle North Transfer Station



Seattle North Transfer Station



Seattle North Transfer Station



Community's Role

- **Community Advisory Group**
 - Learn about garbage and recycling system.
 - Share opinions about project opportunities and challenges.
 - Learn how to engage with local and regional government.
- **Metro is committed to making investment decisions with communities.**



Criteria levels - placeholder

Placeholder for Map....

Metro South Siting Area with Community Identifiers

Next Steps, Timeline*

PROJECT TIMELINE

2019–2020

Community engagement, site analysis, due diligence, acquisition of site for new center

2020–2022

Community engagement, project design, programming of new center

2022–2024


Permitting and construction of new center

2024–2025

Upgrade existing Metro South Transfer Station to improve services for commercial haulers and add collection and processing of commercial food waste

** Subject to change due to COVID-19 impacts, unknowns*

Questions/Discussion



Recycling questions?
Ask your in-house expert.
Then ask ours.

Ask Metro
503-234-3000
oregonmetro.gov



Project Manager:

Estee Segal, 503/517-6898, estee.segal@oregonmetro.gov

Project Website:

<https://www.oregonmetro.gov/future-metro-south-station>