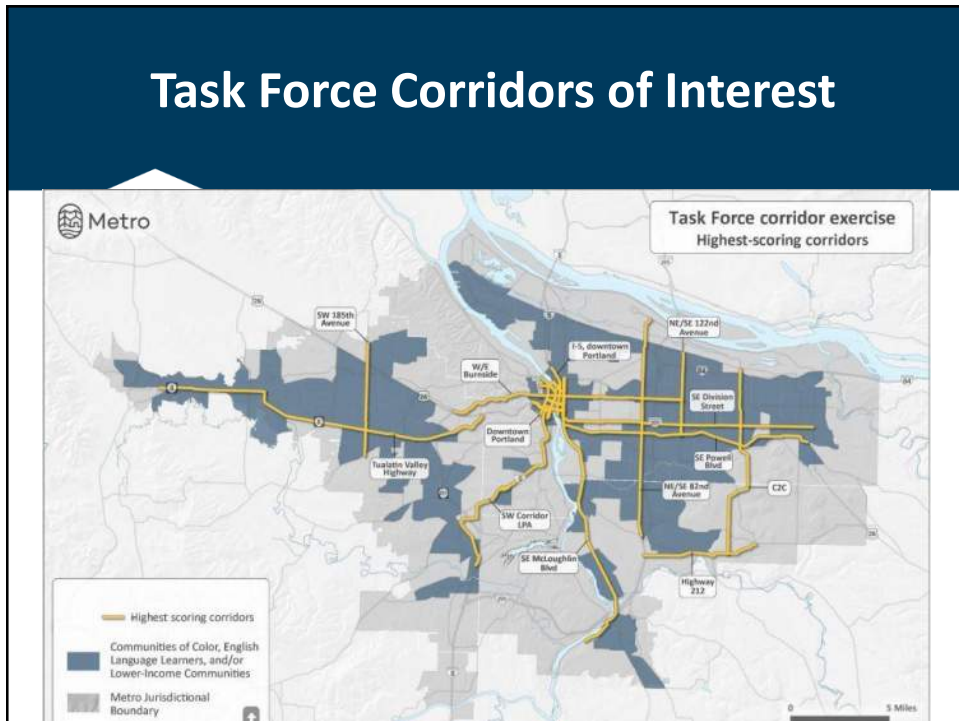


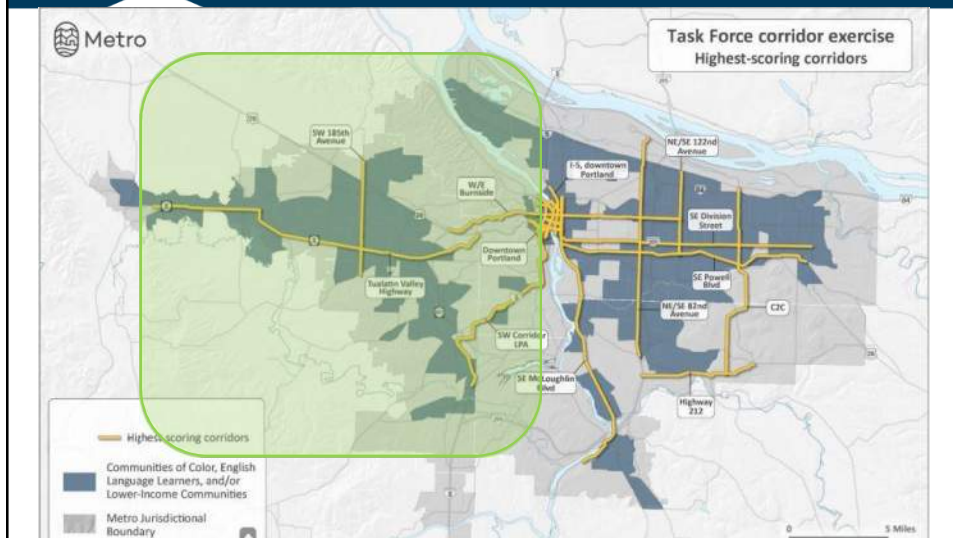


1



2

# Local Investment Team – Washington County



3

## 185<sup>th</sup> Avenue

4

## Presentation Outline

- Corridor overview
  - Regional, local, safety
- Projects/opportunities
- Tour and follow-up

5

5

## 185<sup>th</sup> Avenue (Farmington Rd to Springville Rd)



6

## Regional Role:

- Serves a concentration of communities of color, English language learners and lower income communities.
- Critical north-south connection between US 26 and TV Highway.
- Identified by TriMet as a key corridor to increase transit ridership.
- Access to education centers at PCC Rock Creek and Willow Creek.
- Regional center and medical clinics are destinations from urban and rural areas.

7

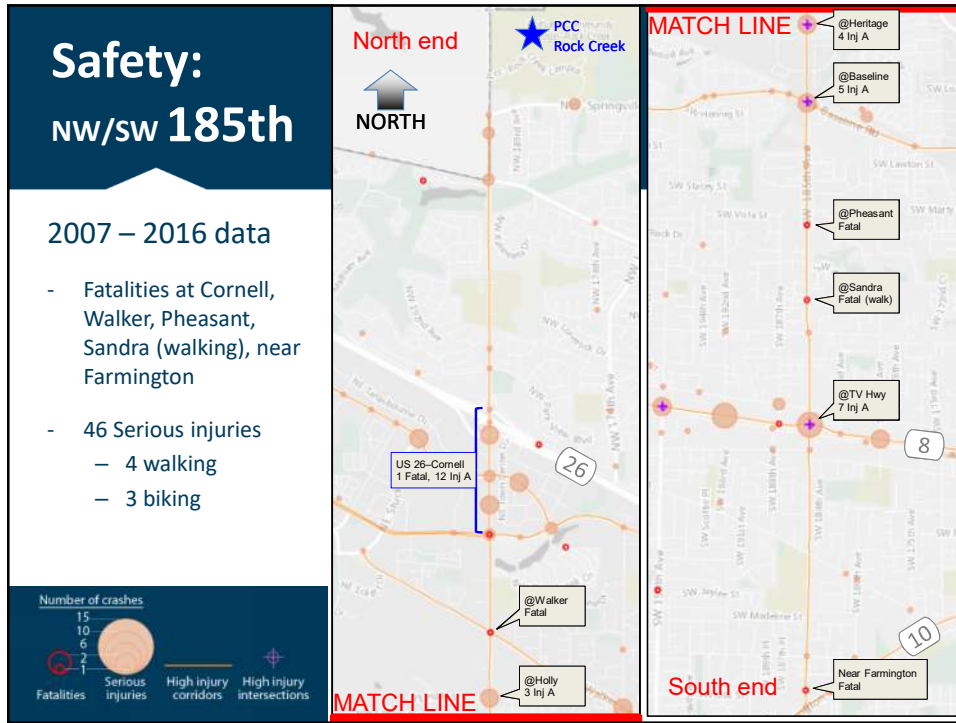
7

## Local Role:

- Serves much of existing urbanized Washington County
- Concentration of communities of color and low-income communities (Aloha High School - 3<sup>rd</sup> highest reduced lunch program in region)
- 185th Ave as main access to/from other destinations
  - Adjacent residential neighborhoods
  - Historic land use patterns, including the OGI/OHSU campus and the pre-existing railroad line limited parallel routes

8

8



9

## Presentation Outline

- Corridor overview
  - Regional, local, safety
- Projects/opportunities
- Tour and follow-up

10

10

## Regional Transportation Plan Projects:

- Widen 185th Ave to 3-5 lanes with sidewalks and bicycle lanes
  - County's transportation system plan identifies 5 lanes between Farmington Rd and TV Highway
- Grade separate MAX (light rail overcrossing)
- Add enhanced pedestrian crossings
- US 26 interchange refinement study
- Intersection projects at Cornell Rd and Walker Rd

11

11

## Current Local Opportunities:

- Enhanced Transit Corridor (ETC) including Willow Creek Transit Center access and signal optimization
- Light Rail Overcrossing (MAX)
- Mid-block crossings at Sandra, Cascade, and Pheasant and other locations
- Intersection redesigns at Alexander, Shaw, Blanton, and potentially TV Highway
- Blanton to Farmington: rebuild as 3-5 lanes with bicycle lanes and sidewalks

12

12

## Conceptual Light Rail Overcrossing



13

1 of 3

## Pedestrian Crossing Treatments

- Rectangular rapid-flash beacon (RRFB)



14

14

2 of 3

## Pedestrian Crossing Treatments

- Pedestrian hybrid beacon (PHB)



15

15

3 of 3

## Pedestrian Crossing Treatments

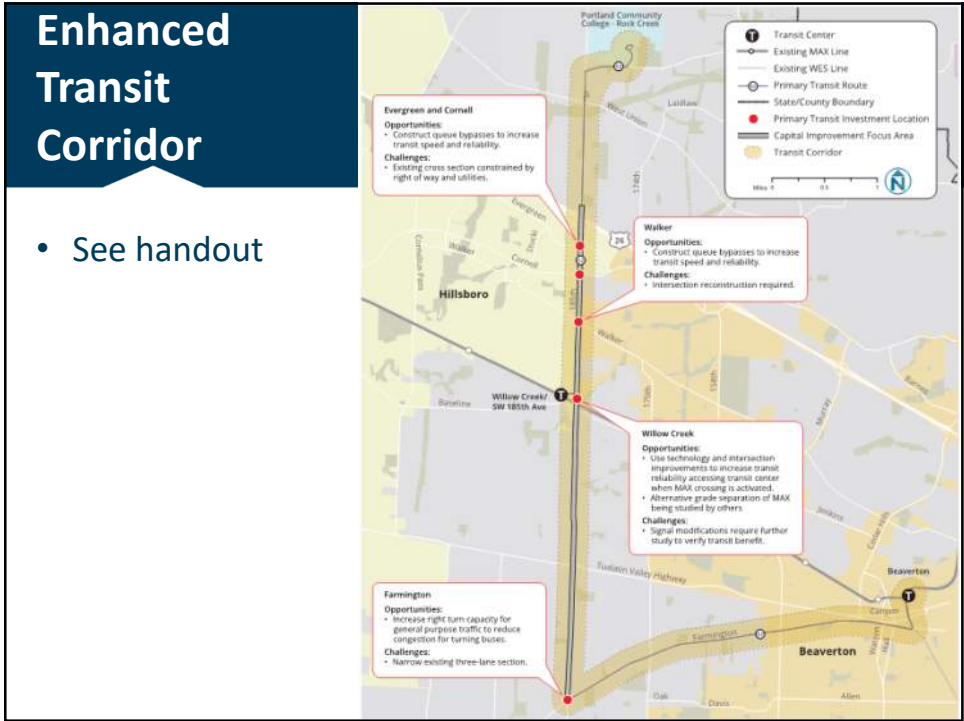
- Half-signal or midblock signal



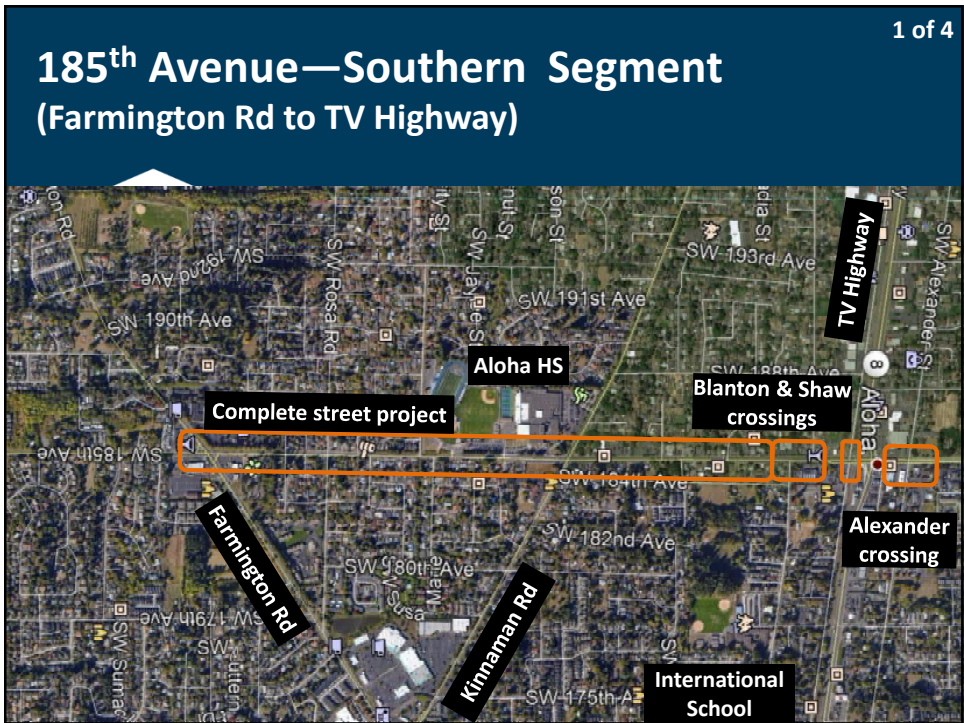
16

16

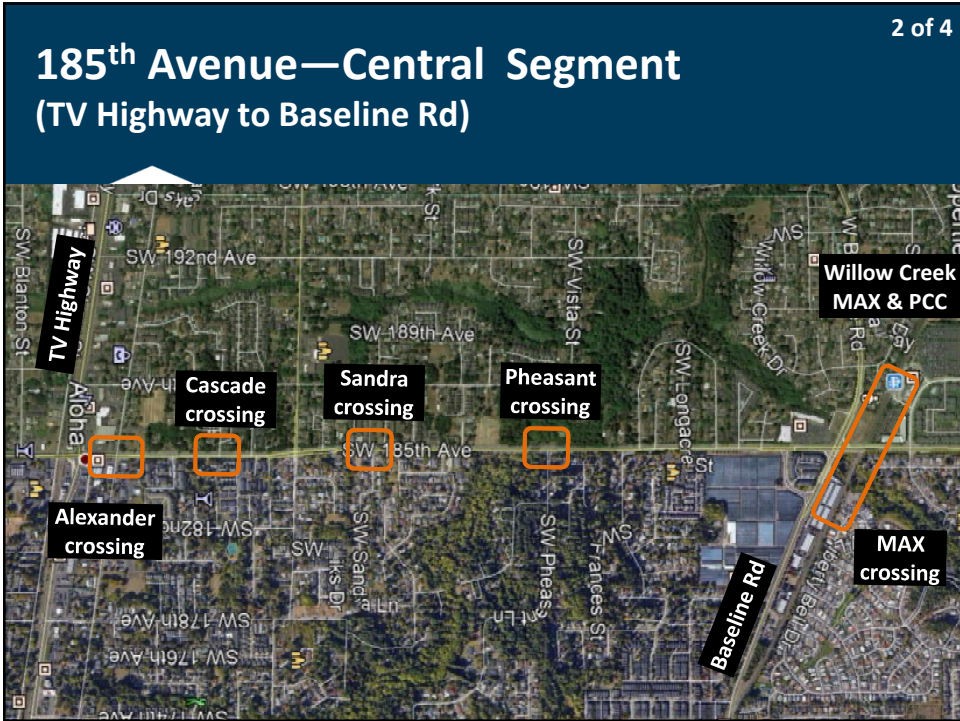




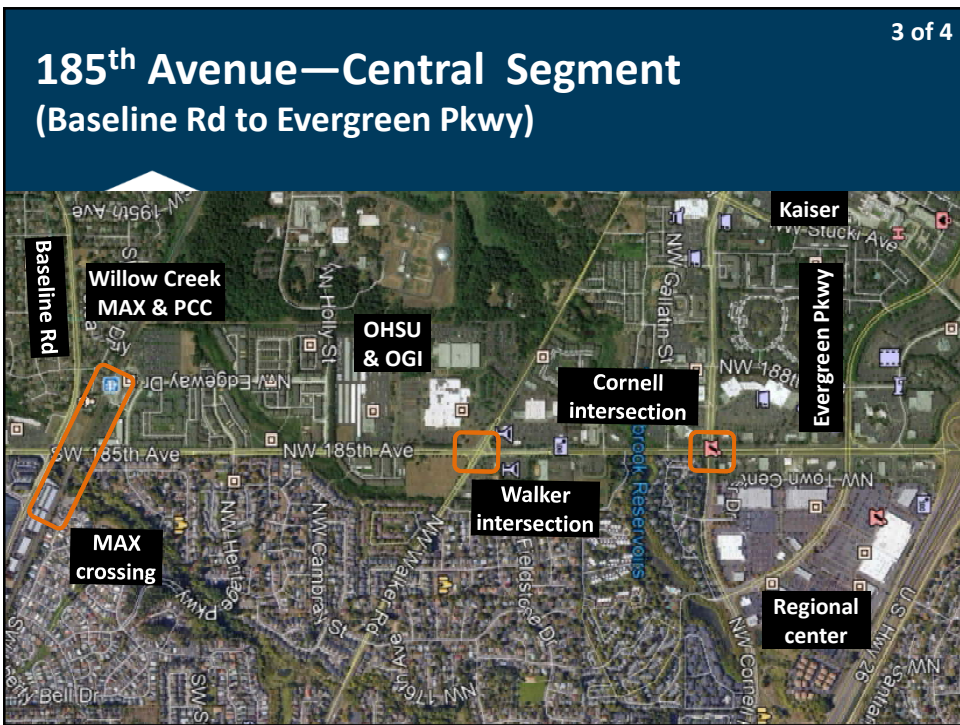
17



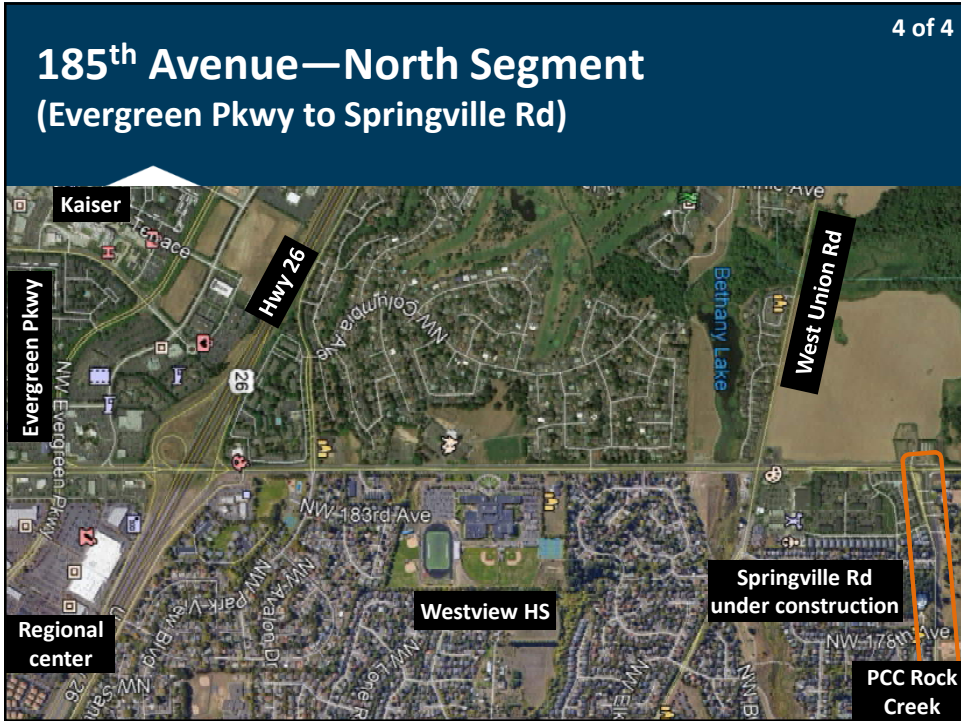
18



19



20



21

## Identified Issues and Opportunities:

- 185<sup>th</sup> Ave is a high injury corridor
- Exhibits prolonged congestion at the at-grade MAX crossing
- High concentration of equity focus areas
- High transit ridership potential
- High safety need

22

22

## Other projects or opportunities?

23

23

## Presentation Outline

- Corridor overview
  - Regional, local, safety
- Projects/opportunities
- Tour and follow-up

24

24

## What else did you notice on the tour?



25

25

**#getmoving2020**  
getmoving2020.org



26