

Investment & Innovation Capital Grants

Information Session June 10, 2019

Welcome!

Purpose of today's
informational
session

Logistics

Introductions



What is Metro?

Regional government serving more than 1.5 million people in Clackamas, Multnomah and Washington counties

Boundary includes Portland and 23 other cities that make up the greater Portland area

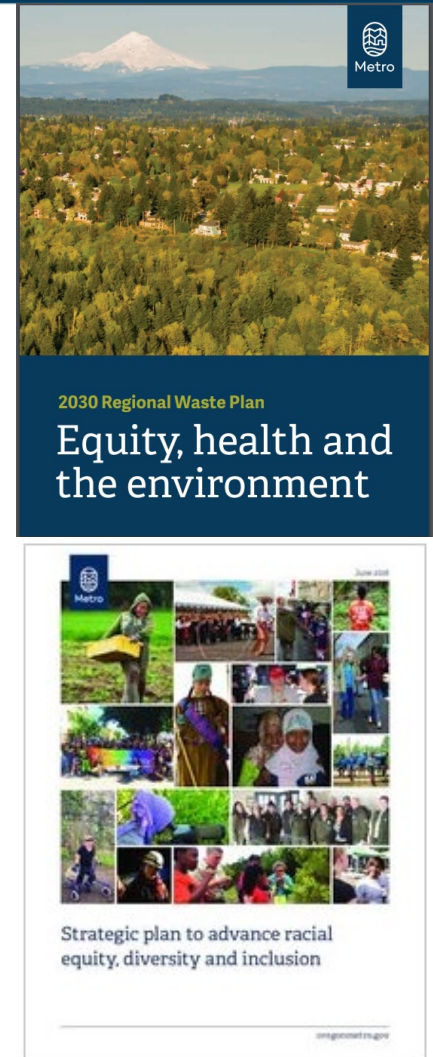
Plans and oversees the regional solid waste system, working with other government agencies, local communities and businesses

Foundations of Investment & Innovation Grant Program

Strengthen local efforts to reduce waste

Make better use of the waste that is produced

Help foster economic opportunities for people who have historically been left out of the garbage and recycling system, particularly people of color.





Investment & Innovation Objectives

- Reduce the amount and toxicity of waste
- Strengthen prevention, reuse, recycling, composting and energy recovery services, programs and infrastructure
- Encourage innovation and advance new technology
- Encourage new participants in the system who are from communities of color or other historically underrepresented groups

Available Investment & Innovation Grants



I&I Capital Grants: \$50,000 - \$750,000

- 
- For machinery, facility infrastructure
- 
- Match requirement 100% (mostly cash)

I&I Program Grants: \$25,000 - \$75,000

- For personnel, operations and equipment associated with new/expanded programs
- Match requirement 20% (cash or in-kind)

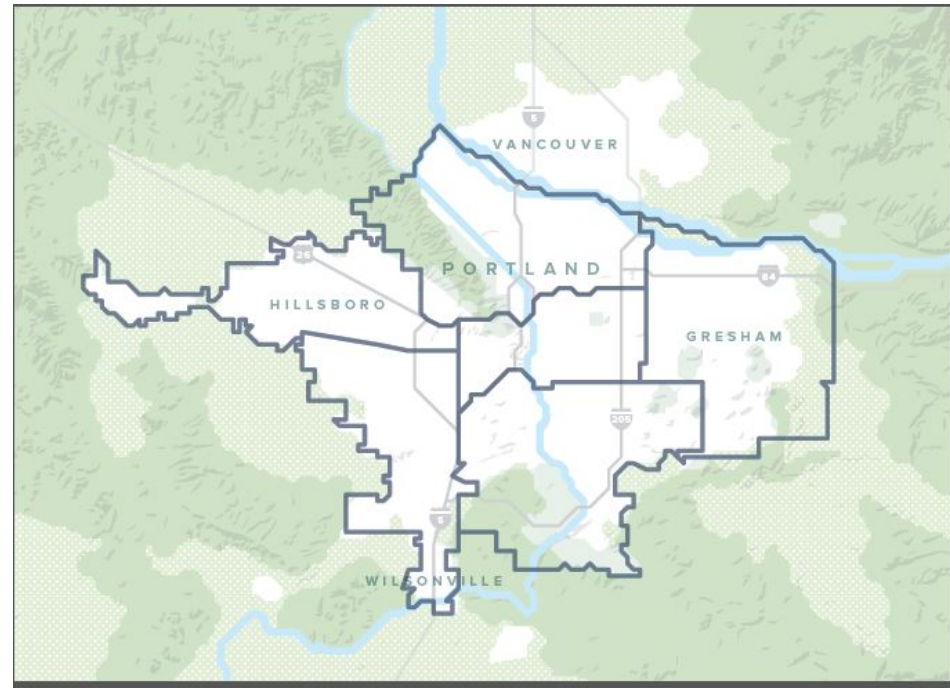
Capital Grant Priority Projects

- Projects to improve recycling infrastructure serving single-family and multifamily residents, and businesses (i.e., the system that supports curbside programs)
- Projects to strengthen region's system for recovering commercial sector food waste

See handbook page 6 for eligibility criteria specific to these types of projects

Who Can Apply?

- 501(c) not-for-profit organizations
- For-profit businesses
- Projects that take place in the Metro region, or have a significant direct impact on products consumed or waste generated in the Metro region
- Can apply for more than one grant (separate applications)



Use of Grant Funds and Match Requirement

- Funds can support construction, professional services, equipment, materials/supplies
- Grant \$ dispensed on reimbursable basis
- 100% match required (up to 33% match can be personnel directly related to project, rest must be cash)
- Both grant funds and match expenses must be directly tied to grant project and **incurred within grant period**

The Strongest Proposals Will....

- Demonstrate positive impacts on the waste stream and/or reduce environmental or human health impacts associated with the life cycle of products

AND

- Advance equity and have direct, positive impacts on communities of color or other underrepresented groups

Examples of Waste Stream Impacts

Projects that....

- Increase receiving or sorting capacity at an existing material recovery facility
- Increase reuse or repair of discarded materials
- Recover more food waste or yard debris to make compost

What we mean by “impacts to the environment or human health”

Some tons are more important than others!

Examples: food and plastics



Examples of Advancing Equity and Benefitting Community

- Employment opportunities or job training/ professional development
- Increase financial or physical access to services
- Provide benefits or reduce negative impacts to a geographic location with concentrations of historically underserved communities




Proposal Process

TWO STAGES: Pre-proposal and full proposal



**funds available
~January 2020*

Overview of ZoomGrants

**Metro**
Powered by ZoomGrants™

Existing ZoomGrants™ Users: Email
Password
☐ Stay logged in? (Admins and Reviewers only)
[Forgot password?](#)

HELP RESOURCES A▲▼

Metro

Open Programs

Open Programs

2019-20 Investment and Innovation Capital Grants
Property and Environmental Services
7/12/2019 - Organizations Only

Apply

Preview

New ZoomGrants™ Account

Email

Password

First Name

Last Name

Account Type ☒ Organization

- Password must be 8-16 characters and contain at least 1 letter and 1 number.
- We do not sell or rent your personal information to anyone. Ever.

ZoomGrants

Metro

Property and Environmental Services

2019-20 Investment and Innovation Capital Grants

Deadline 7/12/2019

OPEN PROGRAMS

DESCRIPTION

MINIMUM QUALIFICATIONS

PURPOSE AND GOALS

LIBRARY

CONTACT ADMIN

Metro

Application Status: Not Submitted

\$ 0.00 requested

Submit Now

Print/Preview

[Archive this Application](#)

Project Summary

Proposal Questions

Documents

Proposal Questions

(answers are saved automatically when you move to another field)

Instructions [Show/Hide](#)

CAPITAL GRANTS PRE-PROPOSAL QUESTIONS

Project summary

1. Provide a brief high-level summary of your project and what it intends to accomplish, including the materials targeted.

Maximum characters: 1000. You have 1000 characters left.

Project need and impacts

2. Describe how the project will directly address a specific need relating to waste prevention, reuse or repair of products, or recycling, composting or making energy from discarded materials. Why is meeting this need important to the Metro region?

Final Thoughts

- Make sure your project directly ties to Investment and Innovation objectives (*see handbook*)
- Make it easy for reviewers....
Tell a clear story!



Investment and Innovation Grants

Capital grant proposal handbook
2019-2020

oregonmetro.gov/grants

Need Additional Help?

- Contract grant writers <http://www.gpanorthwest.org/>
- ZoomGrants help desk, tutorials (technical assistance)
- Grant writing tips (handout)
- Metro staff



Thank you!

Suzanne Piluso, I&I program manager

Suzanne.piluso@oregonmetro.gov

(503) 797-1845

Learn more

oregonmetro.gov/investmentandinnovation

oregonmetro.gov

