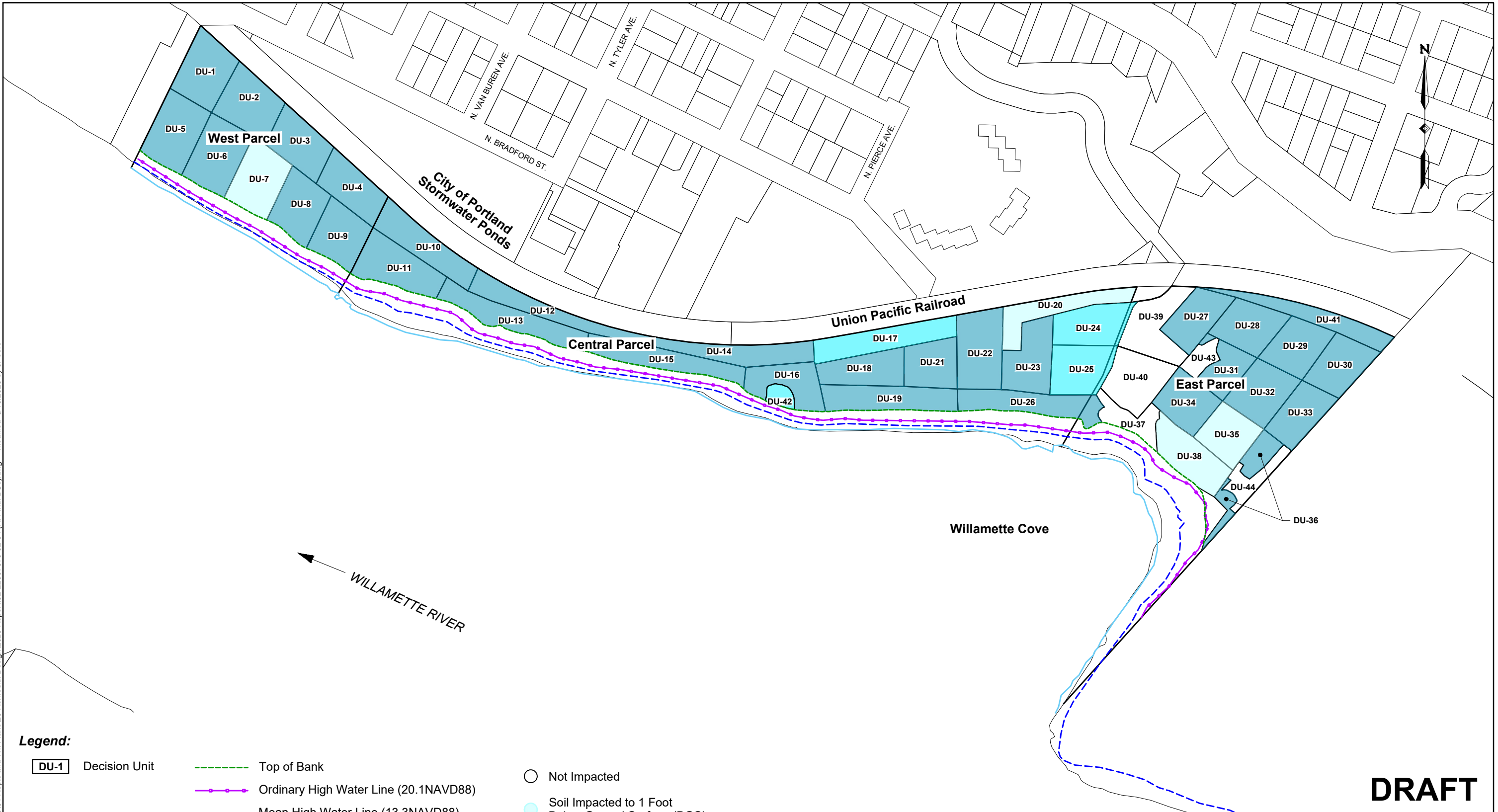


I:\Client\Port of Portland\00-Portland\05-WC\01-Repairs and WK Plans\26 Remedial Design\2023 Report\32-22007576 02-04 (RI Final DUs).dwg Modified 3/16/2023 by jPoore



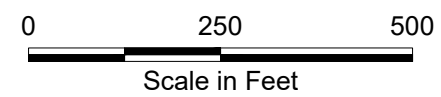
Legend:

DU-1 Decision Unit

- Top of Bank
- Ordinary High Water Line (20.1NAVD88)
- Mean High Water Line (13.3NAVD88)
- Ordinary Low Water Line (6.9NAVD88)

- Not Impacted
- Soil Impacted to 1 Foot Below Ground Surface (BGS)
- Soil Impacted to 2 Feet BGS
- Soil Impacted to at Least 3 Feet BGS

Impacted = Exceeds Non-Dioxin Ecological Hot Spot or Human Health Preliminary Remediation Goal.



NOTE: Base map prepared from Bing Imagery. Tax lot information from ©Oregon Metro www.oregonmetro.gov/rliis (2023). Historical base layer information from an electronic file provided by Hart Crowser.

DRAFT

Depth of Soil Impact

Remedial Design Investigation Report
Willamette Cove Upland Facility
Portland, Oregon

APEX Apex Companies, LLC
15618 SW 72nd Avenue
Tigard, Oregon 97224

Project Number: 32-22007576
March 2023

Drawn: JP
Approved: SM

Figure **4**