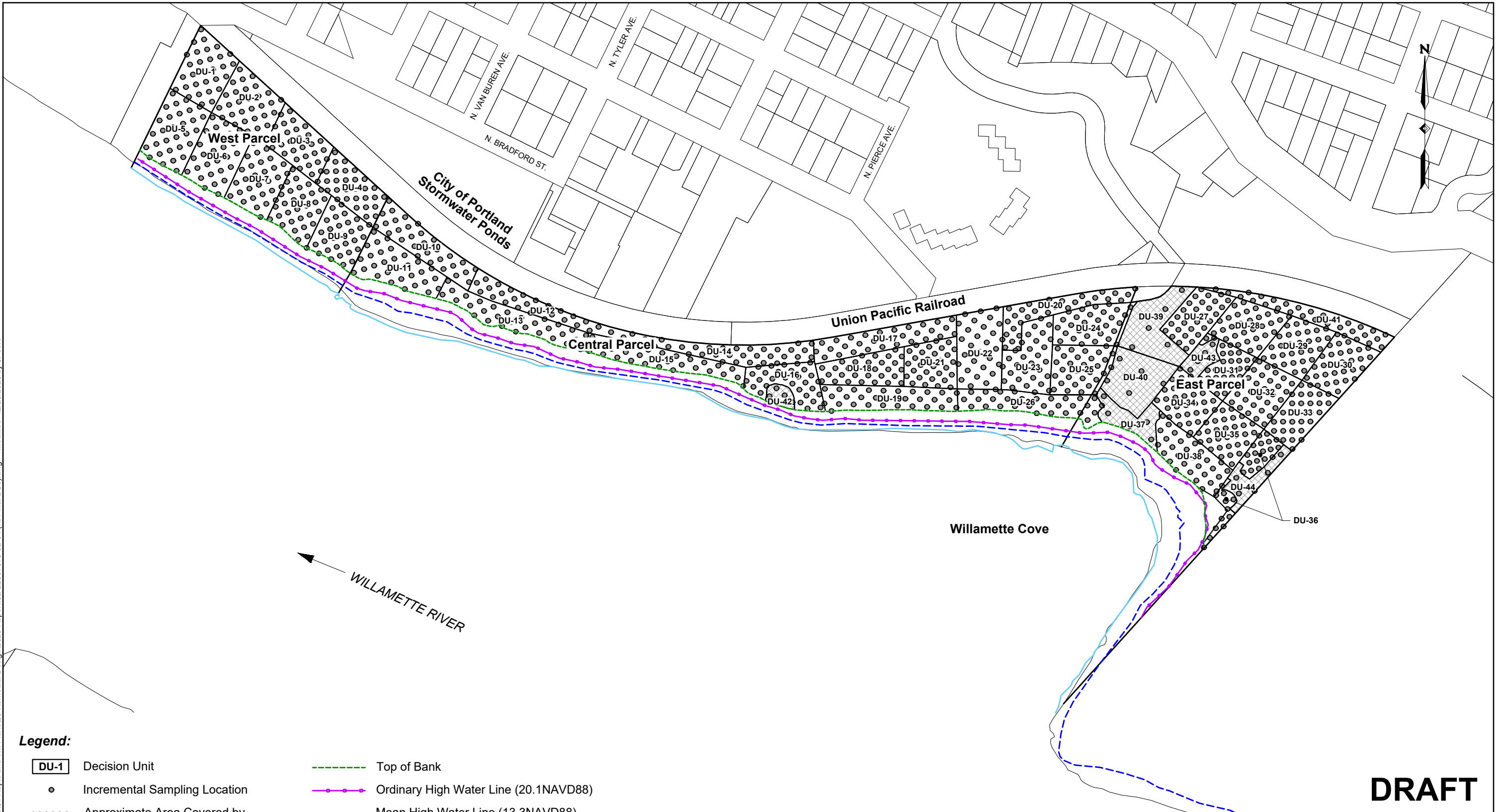


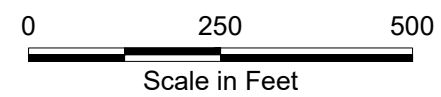
I:\Client\Port of Portland\00-PH90505 WC\01 Repts and Wk Plans\26 Remedial Design\2023 Report\32-22007576 02-04 (RI Final DUs).dwg Modified 12/26/2023 by JPoore



Legend:

- DU-1 Decision Unit
- Incremental Sampling Location
- ▨ Approximate Area Covered by Concrete Slab
- Top of Bank
- Ordinary High Water Line (20.1NAVD88)
- Mean High Water Line (13.3NAVD88)
- Ordinary Low Water Line (6.9NAVD88)

NOTE: Base map prepared from Bing Imagery. Tax lot information from © Oregon Metro www.oregonmetro.gov/rliis (2023). Historical base layer information from an electronic file provided by Hart Crowser.



DRAFT

<p>Sampling Areas and Sample Locations Remedial Design Investigation Report Willamette Cove Upland Facility Portland, Oregon</p>				
Apex Companies, LLC 15618 SW 72nd Avenue Tigard, Oregon 97224	Project Number: 32-22007576	Drawn: JP	Approved: SM	Figure X
	December 2023			