

Agenda



Metro

600 NE Grand Ave.
Portland, OR 97232-2736

Meeting: Quarterly Trails Forum
Date: Wednesday, October 11, 2023
Time: 10 a.m. to 12 p.m.
Place: Metro Regional Center, 600 NE Grand Ave., Portland. Room 328A & B

- 10 a.m. Welcome (5 minutes)
Ashton Simpson, Metro Councilor
- 10:05 Introductions and announcements (30 minutes)
All attendees
- 10:35 Oregon Trails Coalition update (5 minutes)
Steph Noll, OTC
- 10:40 Portland Parks & Recreation trail project updates (10 minutes)
Mary Stewart and Grace Diaz, Portland Parks and Recreation
- 10:50 PSU's Transportation Research and Education Center (TREC) (15 minutes)
Hau Hagedorn, TREC
- 11:05 Levee Ready Columbia project update (10 minutes)
Colin Rowan and Mark Wilcox, Multnomah County Drainage District
- 11:15 Report out on the state of regional trail networks across the U.S. (10 minutes)
Robert Spurlock, Metro
- 11:25 Metro's Regional Trails System Plan Map, 5-year update (10 minutes)
Robert Spurlock, Metro

Funding opportunities

- 11:35 Rivers, Trails and Conservation Assistance Program (10 minutes)
Dan Miller, National Parks Service
- 11:45 Recreational Trails Program and other State Parks-administered grants
(10 minutes)
Jodi Bellefeuille, Oregon Parks and Recreation Department
- 11:55 a.m. Adjourn

Next meeting

Wednesday, January 10th, 2024, 10 a.m. to 12 p.m. Zoom.

Statement of inclusivity: The Quarterly Trails Forum is an inclusive and welcoming space. Participants commit to treat each other with respect by avoiding, obscene, hateful, or racially derogatory language that creates an intimidating, hostile, or offensive environment. Participants have honored this in the past and we appreciate your support in continuing to do so.

Metro fully complies with Title VI of the Civil Rights Act of 1964 and related statutes that ban discrimination. If any person believes they have been discriminated against regarding the receipt of benefits or services because of race, color, national origin, sex, age or disability, they have the right to file a complaint with Metro. For information on Metro's civil rights program, or to obtain a discrimination complaint form, visit www.oregonmetro.gov/civilrights or call 503-813-7514. Metro provides services or accommodations upon request to persons with disabilities and people who need an interpreter at public meetings. If you need a sign language interpreter, communication aid or language assistance, call 503-797-1890 or TDD/TTY 503-797-1804 (8 a.m. to 5 p.m. weekdays) 5 business days before the meeting. All Metro meetings are wheelchair accessible. For up-to-date public transportation information, visit TriMet's website at www.trimet.org.

August 2016



Oregon Trails Coalition

Update for Metro Regional Trails Forum

Oregon Outdoor Recreation Summit

In Partnership with the Oregon Trails Summit

November 2-4, 2023 • Coos Bay-North Bend



Trails Skills Trainings!





PHOTO BY F.R. BRADDOCK, OREGON PHOTOS.COM



March

Willamette River Water Trail

Stats:

Mileage: 187 miles

Surface: Water trail

Use: Mostly mellow water

passing

Status: Some camping/
access points complete;
others planned



Sunday	Monday	Tuesday	Wednesday	Thursday	Friday	Saturday
23	24	25	26	27	28	1
2	3	4	5	6	7	8
9	10	11	12	13	14	15
16	17	18	19	20	21	22
23/30	24/31	25	26	27	28	29

Oregon Trails Coalition | www.oregontrailscoalition.org

OREGON SIGNATURE TRAILS 2024-25 15-MONTH CALENDAR

LEARN MORE ABOUT
OREGON'S 15 SIGNATURE TRAILS



An Oregon Trails Coalition Project



PACIFIC CREST TRAIL | ELI BOCHETTO



Blue Mountains Trail Presentation
October 17 at 5:30pm
Lucky Lab Brewpub

*Quimby Beer Hall,
1945 NW Quimby St., Portland*



It's always a good day to talk to a state legislator about your favorite trails!



Thank you for all you do for
Oregon trails and trail users!

Oregontrailscoalition.org





PORTLAND PARKS & RECREATIONSM

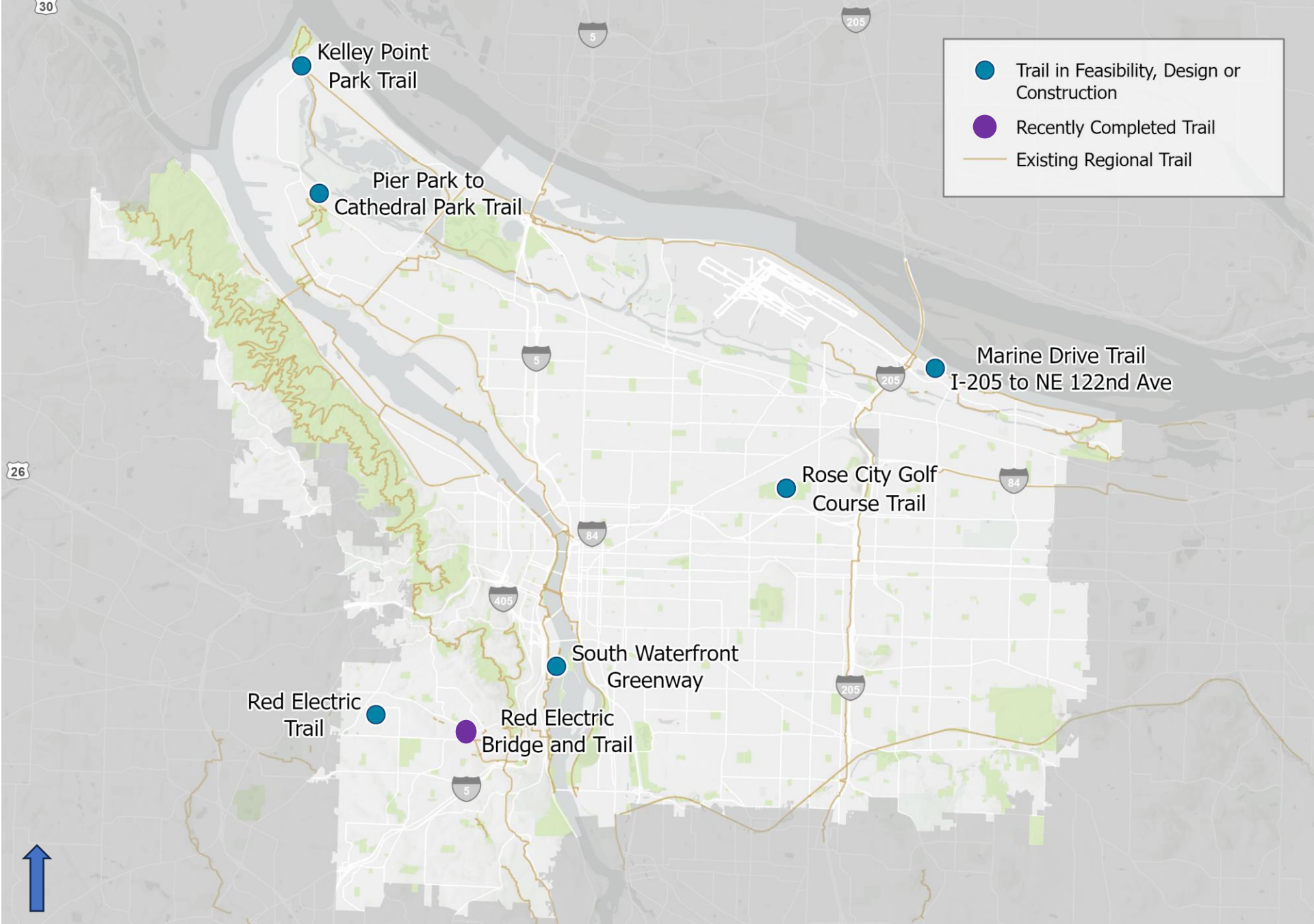
Healthy Parks, Healthy Portland



Portland Parks & Recreation Trails Updates

Grace Diaz, Planner

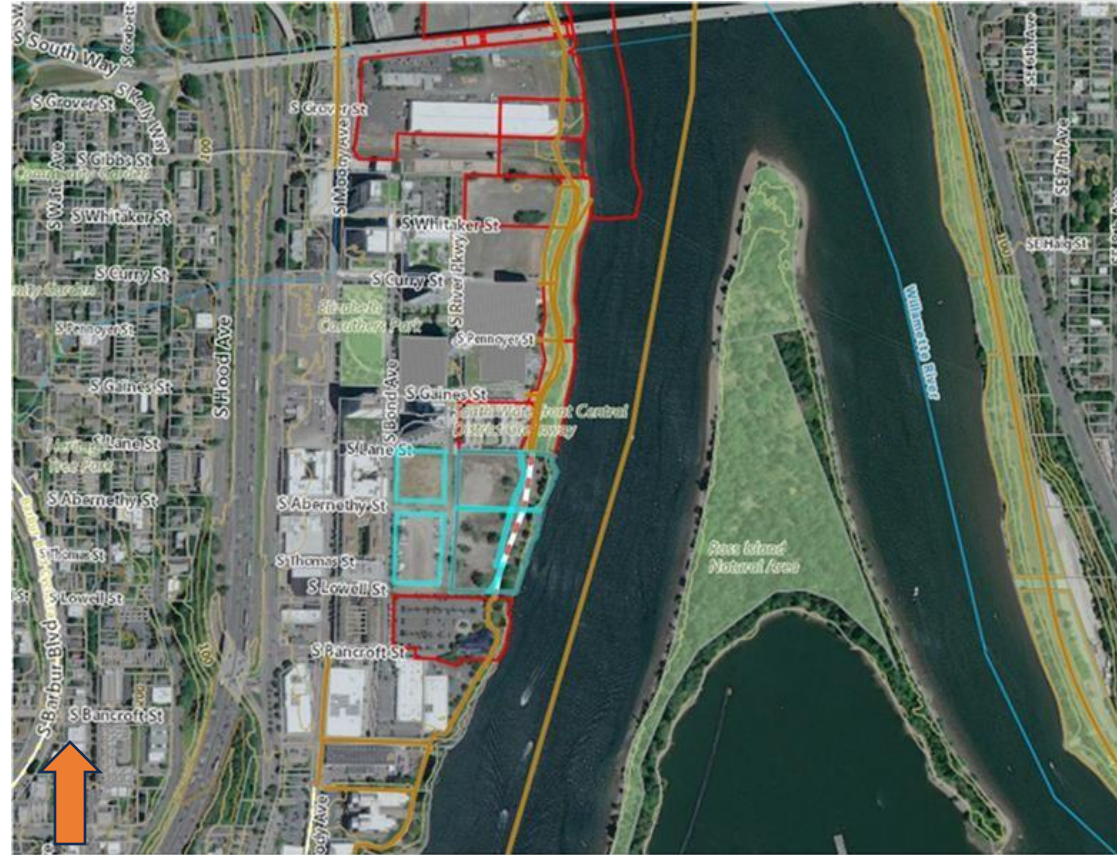
Mary Stewart, Capital Project Manager





South Waterfront Greenway

- In construction
- Closing a gap between the Old Spaghetti Factory and S Lane St in South Waterfront
- 0.12-mile Bike / ped path
- Opening late 2023





PORTLAND PARKS & RECREATION SM

Healthy Parks, Healthy Portland

South Waterfront Greenway



Trail segment built and maintained by Alamo Manhattan developer



Red Electric Trail

- Feasibility / preliminary design stage
- Design funded for the western segment from **SW Shattuck Road to SW Cullen Blvd.**
- The trail will eventually connect to PBOT's recently constructed bridge within the western edge of the trail. As of August, trail design options are in development after survey completion and community meeting feedback.





Project updates:

<https://www.portland.gov/parks/construction/red-electric-trail>





North Portland Greenway:

Pier Park to Cathedral Park Trail

- Completing IGA for design and construction





North Portland Greenway:

Pier Park to Cathedral Park Trail

- The Pier Park to Cathedral Park trail project fulfills the vision to extend the npGREENWAY and connect Cathedral Park, the Baltimore Woods, and Pier Park.
- This segment of the npGREENWAY will include in-street improvements to be constructed in partnership with PBOT and off-street improvements on Park property. With the gap in this area closed, trail users will have safe access across North Portland.

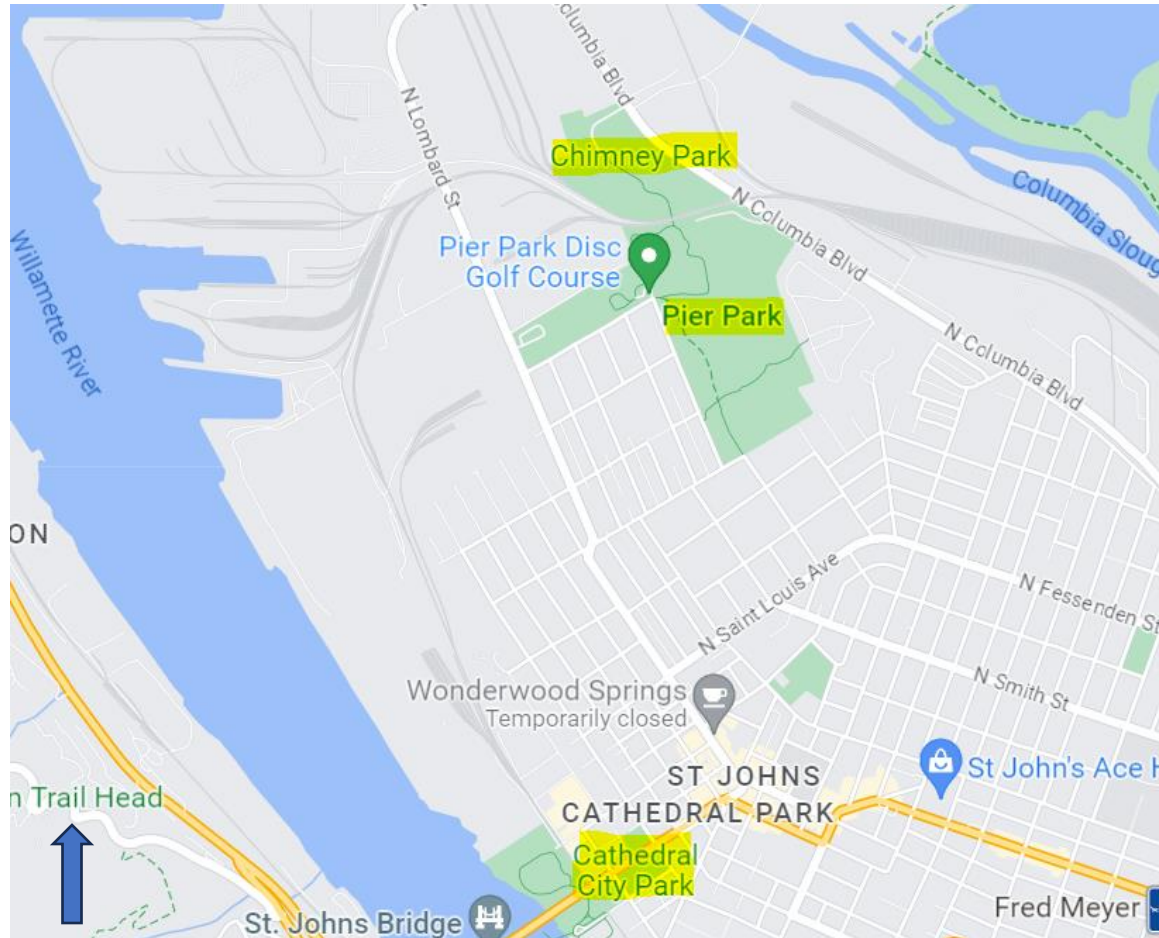


PORTLAND PARKS & RECREATION SM

Healthy Parks, Healthy Portland

North Portland Greenway:

Pier Park to Cathedral Park Trail





North Portland Greenway:

Kelley Point Park Trail

- Historically and culturally significant due to location at the confluence of the Columbia and Willamette Rivers.
- Northern terminus of the 40-Mile Loop, the npGREENWAY and Willamette Greenway.
- 1,400-foot gap
- Engineering is underway





Marine Drive Trail

I-205 to NE 122nd Ave

- Completing IGA for design and construction





Marine Drive Trail

I-205 to NE 122nd Ave

- 0.8-mile segment completes a major gap in the 40-Mile Loop
- Replaces on-street bike lanes with a separated multi-use path that's more suitable for all ages and abilities
- Opens up 14 miles of uninterrupted off-street trail between NE 33rd Drive and the Sandy River in Troutdale





Rose City Golf Course Trail

- Local Trail
- Survey underway, design beginning this fall/winter
- A new walking loop around the “front 9”
- New trail
- Improve existing soft surface trails,
- Formalize two frequently used crossings of NE 72nd

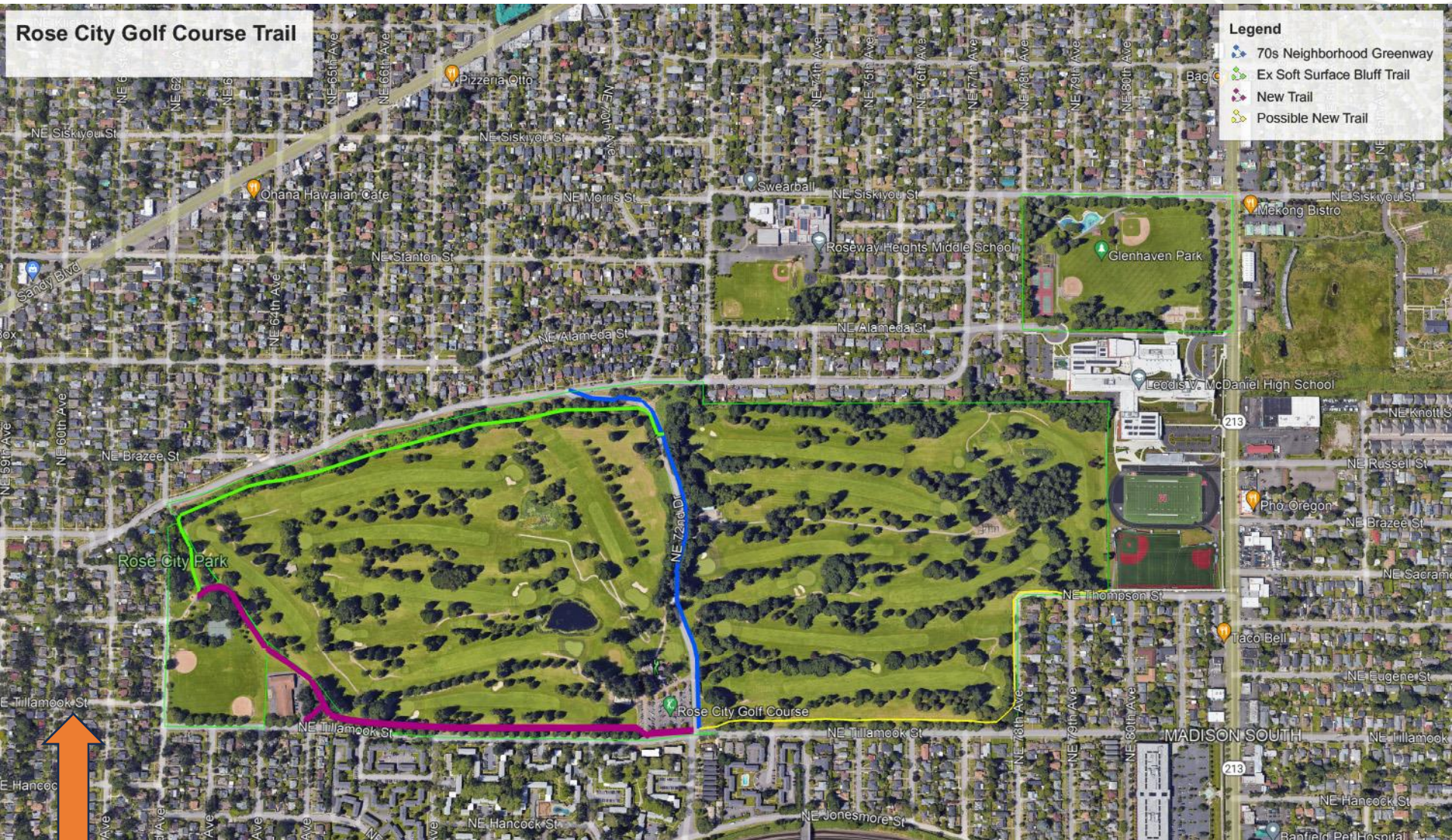




PORTLAND PARKS & RECREATION SM

Healthy Parks, Healthy Portland

Rose City Golf Course Trail





Peninsula Crossing Trail

City staff completed maintenance work along the trail, which had to be temporarily closed for a few weeks this summer.

Work included:

- Completing the construction of the Peninsula Crossing Safe Rest Village
- Trail maintenance
- Removing invasive blackberry
- Pruning, mulching, and mowing around the trail.
- Crews also made trail repairs, installed new signage, and assessed tree conditions and larger trail repair needs to address going forward.



PORTLAND PARKS & RECREATIONSM

Healthy Parks, Healthy Portland



Peninsula Crossing Trail





PORTLAND PARKS & RECREATIONSM

Healthy Parks, Healthy Portland

Peninsula Crossing Trail





PORTLAND PARKS & RECREATIONSM

Healthy Parks, Healthy Portland



Thank You!

Contact for general trail planning questions:

Brett.Horner@portlandoregon.gov - Planning Manager

Grace.Diaz@portlandoregon.gov - Planner

Contact for Kelley Point Trail, Marine Drive Trail, and Rose City Golf Course Trail:

Mary.Stewart@portlandoregon.gov - Capital Project Manager



TREC *Transportation Research* *Education Center*

Hau Hagedorn, Associate Director

John MacArthur, Sustainable Transportation Program Manager

Tammy Lee, PhD., Transportation Data Manager



Portland State
UNIVERSITY



TREC
TRANSPORTATION RESEARCH
and EDUCATION CENTER



Let knowledge serve the city



Photo Credit: TriMet



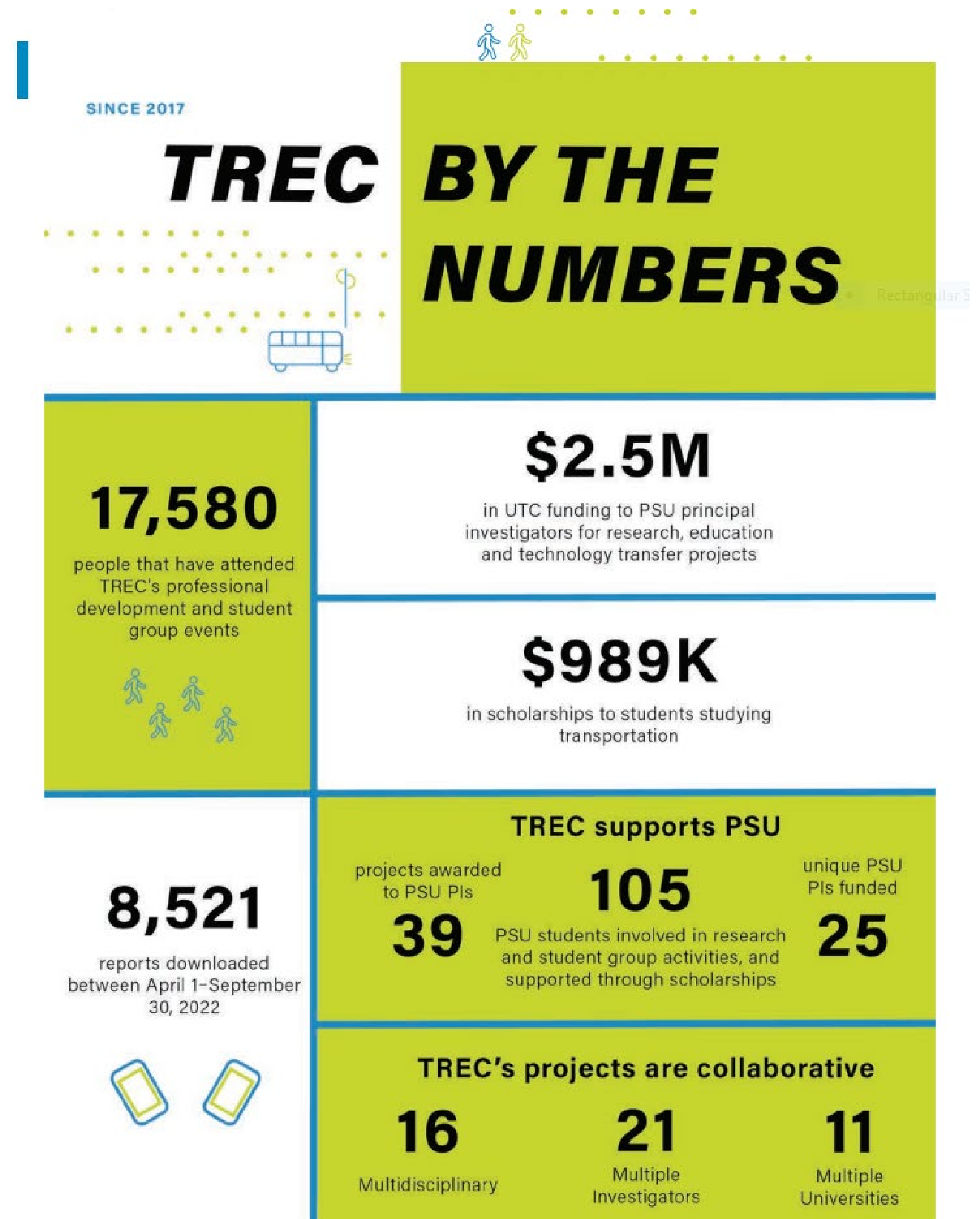
Advancing knowledge and research on bicycle and pedestrian travel





IMPACT

- Research
 - Impactful research for transportation decision makers and professionals
- Education
 - expand the diversity and capacity of the workforce
 - engage students and professionals through education and participation in research
- Knowledge transfer
 - Free seminars and webinars





TRAINING THE NEXT GENERATION OF PLANNERS AND ENGINEERS

through K12 and university education programs



❖ *National Summer Transportation Institute*

Support the development of a diverse, v
qualified workforce for the 21st century
transportation industry, the National
Summer Transportation Institute (NSTI)
Program serves to increase awareness
stimulate interest in transportation to
middle and high school students.





INTEGRATING BIKE PED TOPICS INTO UNIVERSITY CURRICULUM

92

University Faculty



36

States / Provinces

4

Countries





Training the current generation of planners and engineers

Since 2007

We have trained +750 people from 45 U.S. states and 6 countries!

Integrate research into practice

Unique collaboration and partnership with the Portland Bureau of Transportation to test innovation and to put it into practice.





Testing Innovation

PSU research on the innovation happening in cities across the country is being used to change national guidance, including the MUTCD and ITE Trip Generation manual, allowing cities and states more flexibility and improving safety





PEDESTRIAN SAFETY

- Research was among the first to show racial bias in pedestrian's experience crossing streets. The study has now been replicated in other places and used in city plans to set new policy and priorities.
- Our research identified the best practices for using Rectangular Rapid Flashing Beacons



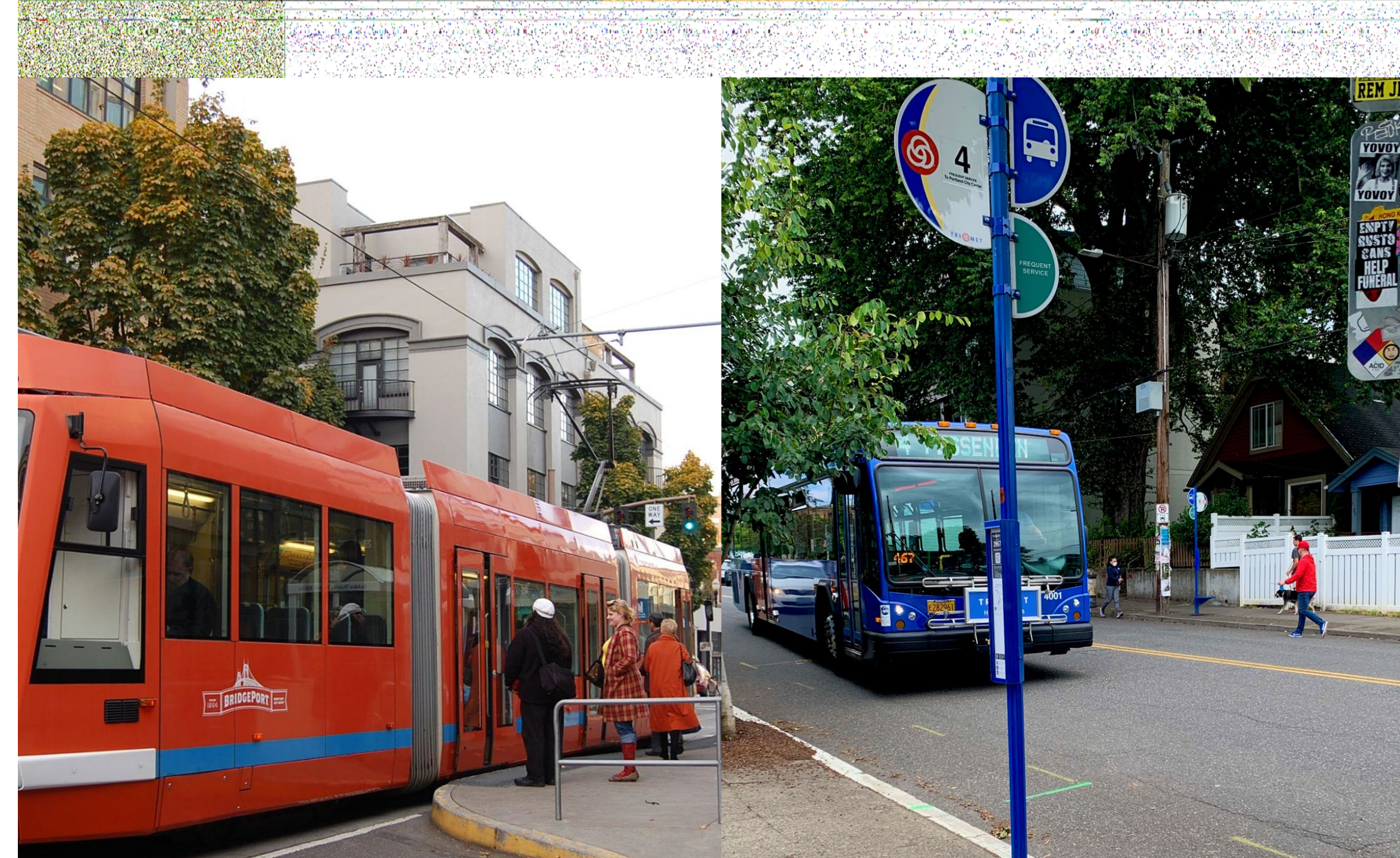
RACIAL DISCRIMINATION AT THE CROSSWALK





ECONOMIC VALUE OF MULTIMODAL TRANSPORTATION

- NITC research has documented the economic value of investing in transit, bicycle & pedestrian
- Surveys found that people who bike to bars, restaurants, and convenience stores spend similar amounts or more per month than people who drive.
- Analysis of jobs, wages, and sales along 14 streets with new bike infrastructure in six cities found positive impacts in most cases
- Economic analysis found that homebuyers value access to high-quality bicycle infrastructure





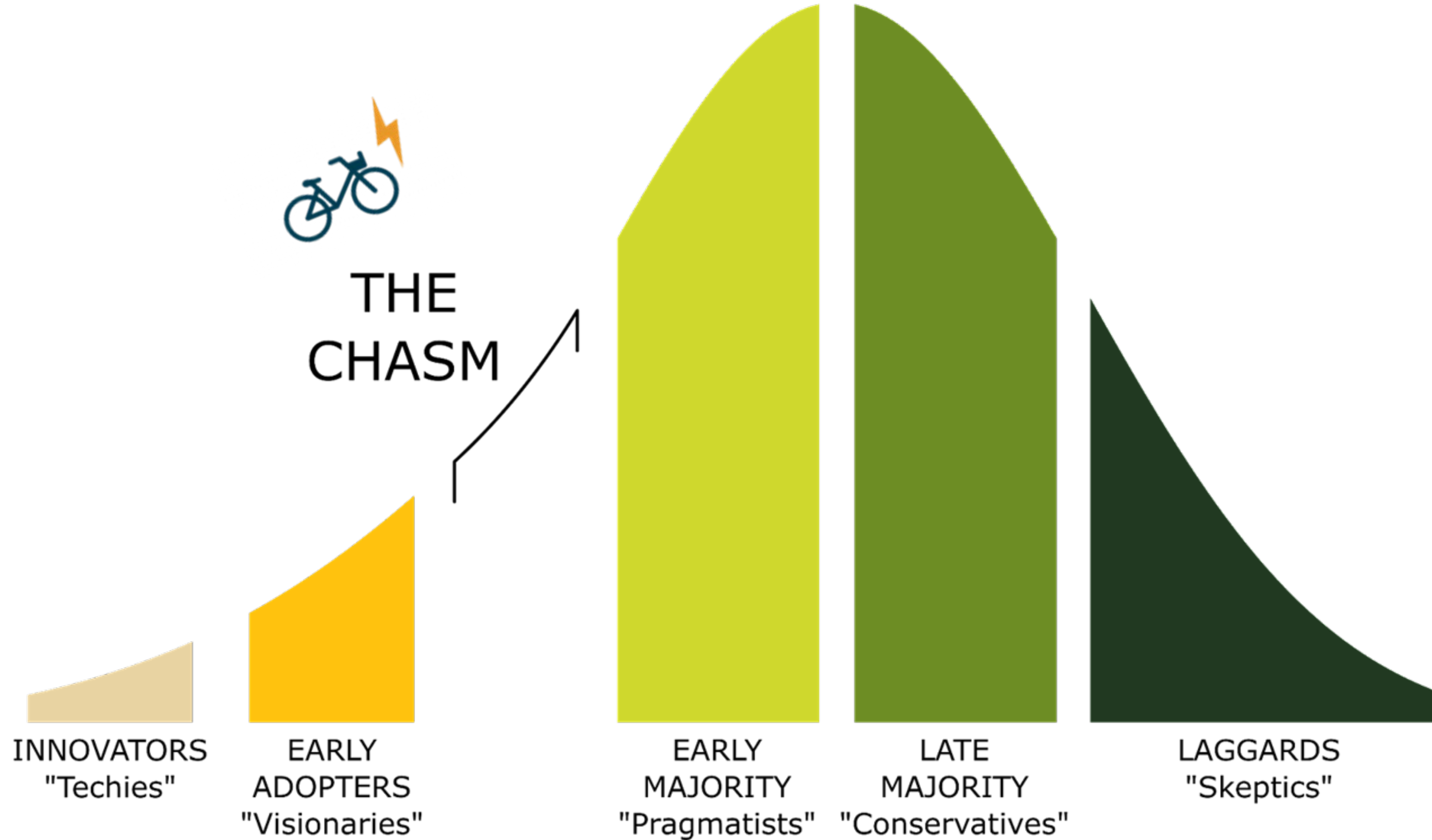
MAKING NEW TECHNOLOG EQUITABLE

- Research is helping to ensure that new mobility options are not leaving many users behind
- Evaluating Efforts to Improve the Equity of Bike Share Systems
- Applying an Equity Lens to Automated Payment Solutions for Public Transportation
- Evaluating the Effects of A Low-income Transit Fare Program on Low-income Riders





2023 the Year of the E-bike



E-bikes are getting more people biking and more people biking more often.

<https://trec.pdx.edu/e-bike-research>



E-BIKES ON TRAILS



peopleforbikes

Land Managers: <https://www.peopleforbikes.org/electric-bikes/for-land-managers>

The Future of E-Bikes on Public Lands – Research Synopsis

August, 2022



Volpe National Transportation Systems Center is working with Federal Lands to conduct research on trails.



- Comprehensive non-motorized data management system for manual and automated bicycle and pedestrian counts
- Basic metrics for 11 states, 690 locations across the US
 - Volume by year, month, day, hour
 - Quality checks
- Active project with National Park Service on National Capital Area regional trails
 - Annotation of data
 - Regional dashboard
 - Correction factor





Arlington, VA Dashboard

Select your organization: Arlington Virginia ▾

Last data received: 2023-10-08

Locations

46

Installations

128

Auto Count Locations

56

Manual Count Locations

20

No. Records

32.38M

Pct. Bicycle

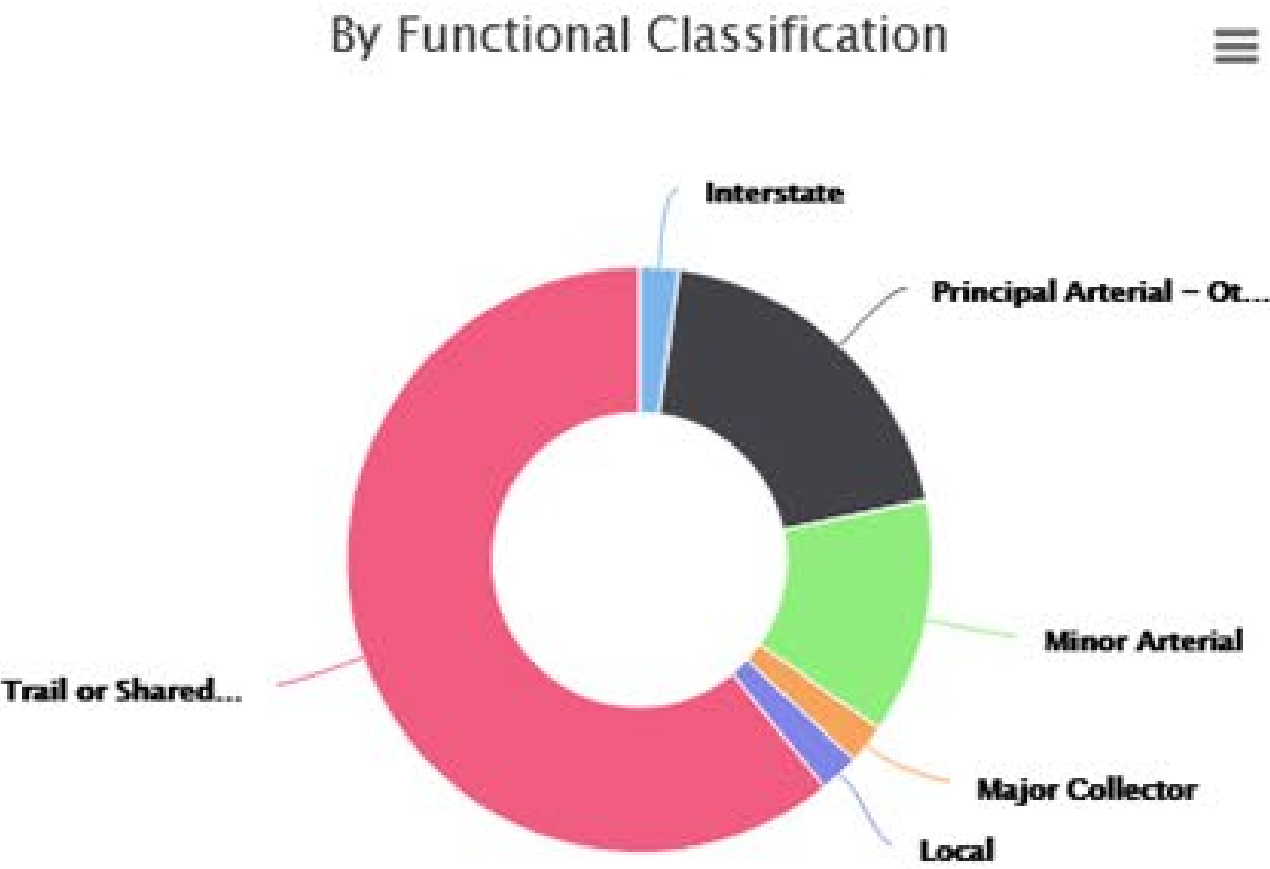
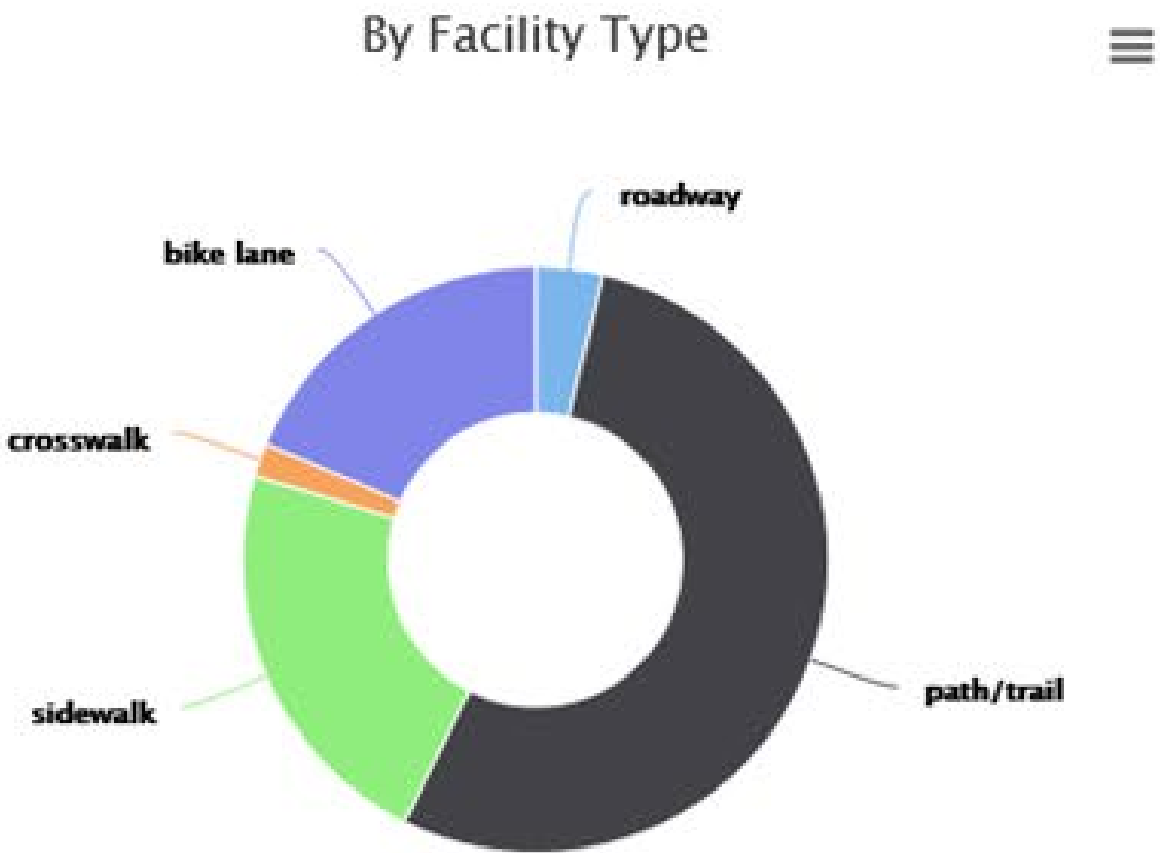
38%

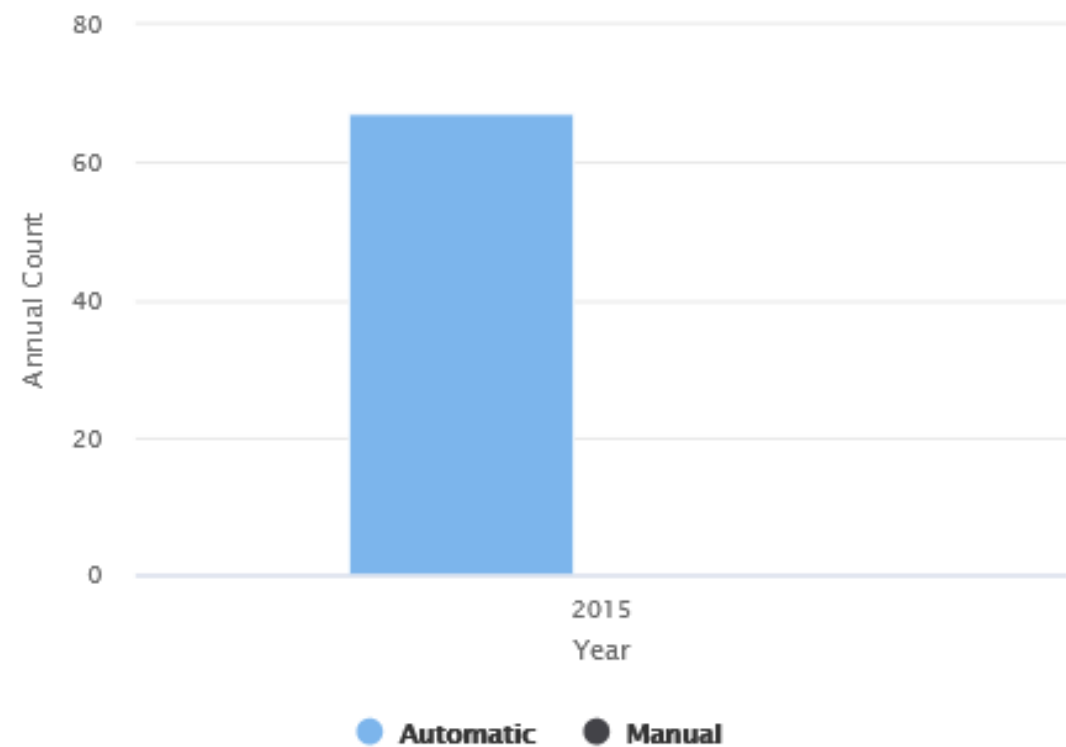
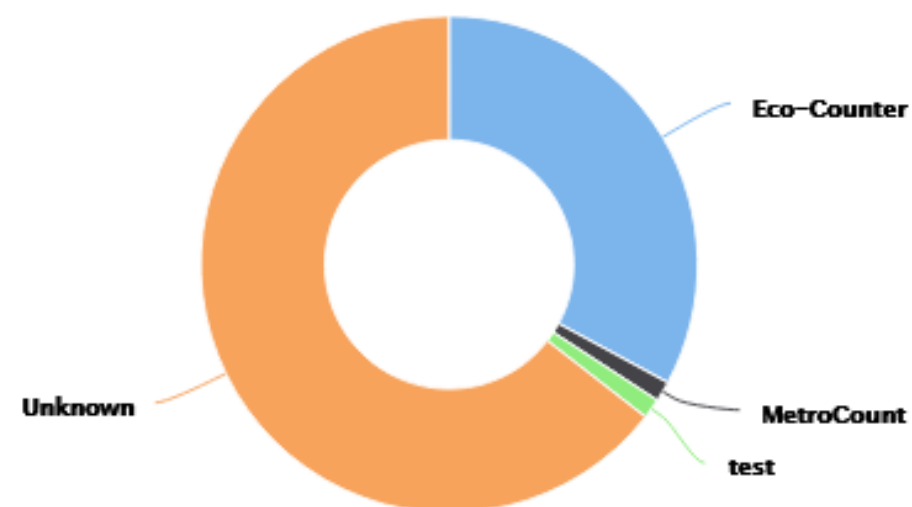
Pct. Pedestrian

27%

Pct. Other

35%

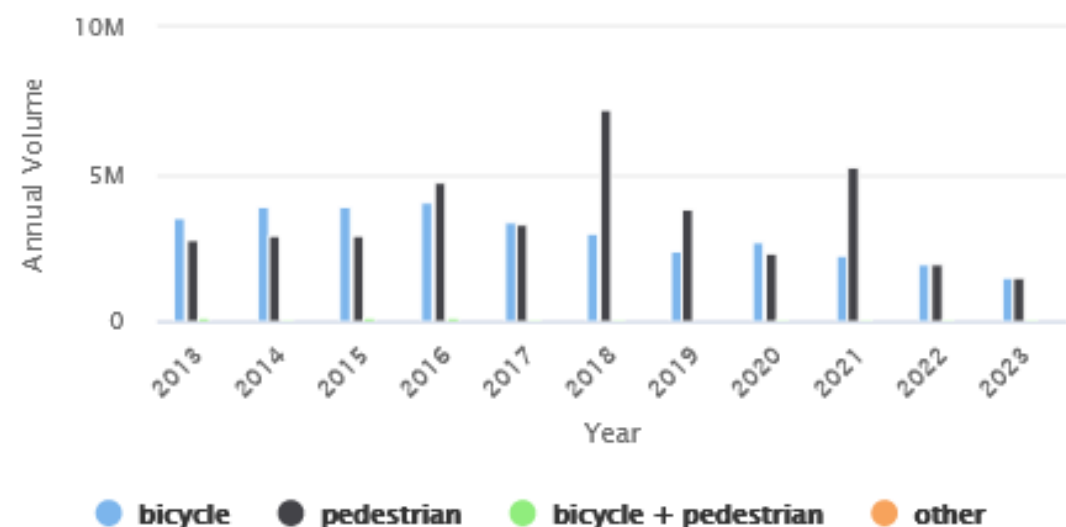




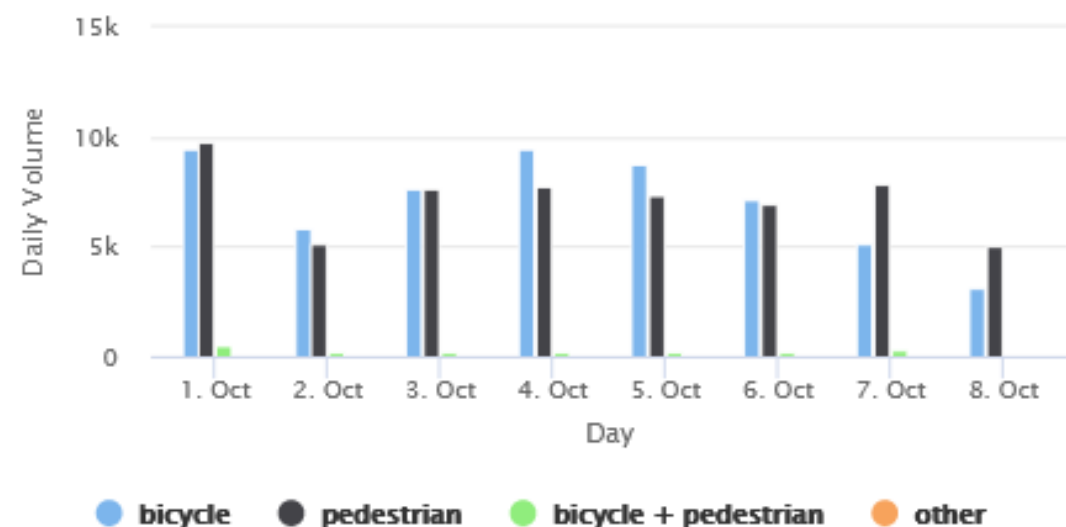
Top 10 Locations - Pedestrian Volume (past 7 days from 2023-10-08)

Location	City	State	Weekly Volume	Daily Volume
Key Bridge	Arlington	VA	24671	
Theodore Roosevelt Island Bridge	Arlington	VA	8523	
W&OD Trail (East Falls Church)	Arlington	VA	5378	
Crystal City Connector	Arlington	VA	4885	
Ballston Connector	Arlington	VA	4544	
Custis Trail (Bon Air Park)	Arlington	VA	3568	
W&OD Trail (Columbia Pike)	Arlington	VA	3058	
Mt Vernon Trail - Airport South	Arlington	VA	2801	
S Joyce St	Arlington	VA	112	

Volume per Year by Mode Type



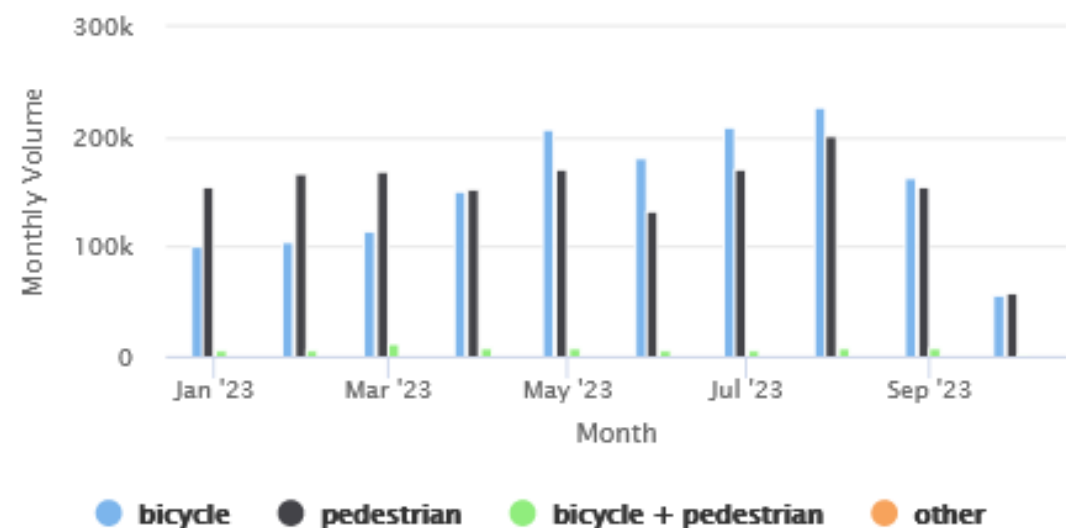
Total Daily Volume by Mode Type



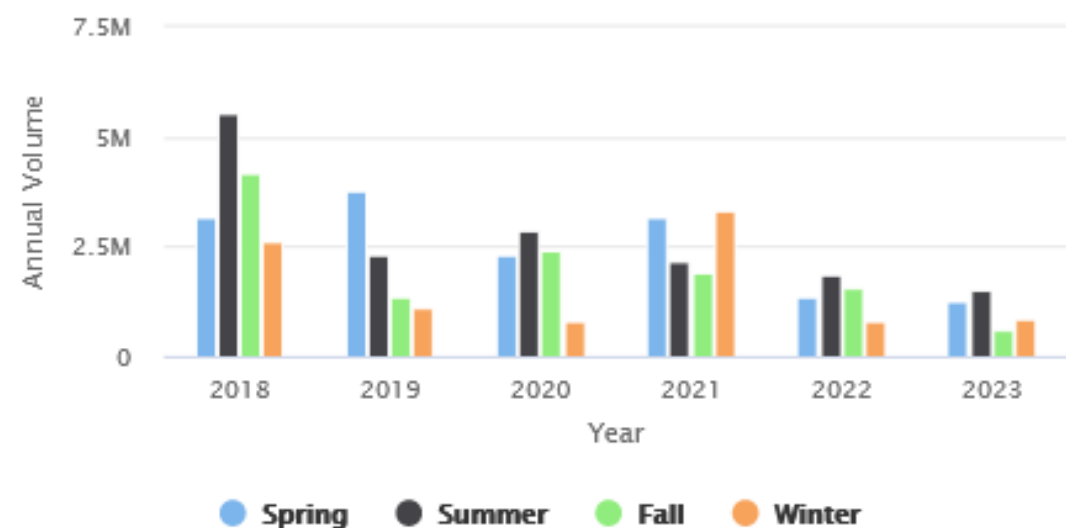
Top 10 Locations - Bicycle Volume (past 7 days from 2023-10-08)

Location	City	State	Weekly Volume	Daily Volume
Key Bridge	Arlington	VA	12768	
Mt Vernon Trail - Airport South	Arlington	VA	9596	
Rosslyn Bikeometer	Arlington	VA	7496	
Theodore Roosevelt Island Bridge	Arlington	VA	5472	
Custis Trail (Bon Air Park)	Arlington	VA	4860	
Crystal City Connector	Arlington	VA	4496	
W&OD Trail (Columbia Pike)	Arlington	VA	4354	
W&OD Trail (East Falls Church)	Arlington	VA	2156	
Wilson Blvd	Arlington	VA	1582	
Crystal Dr	Arlington	VA	931	

Total Monthly Volume by Mode Type



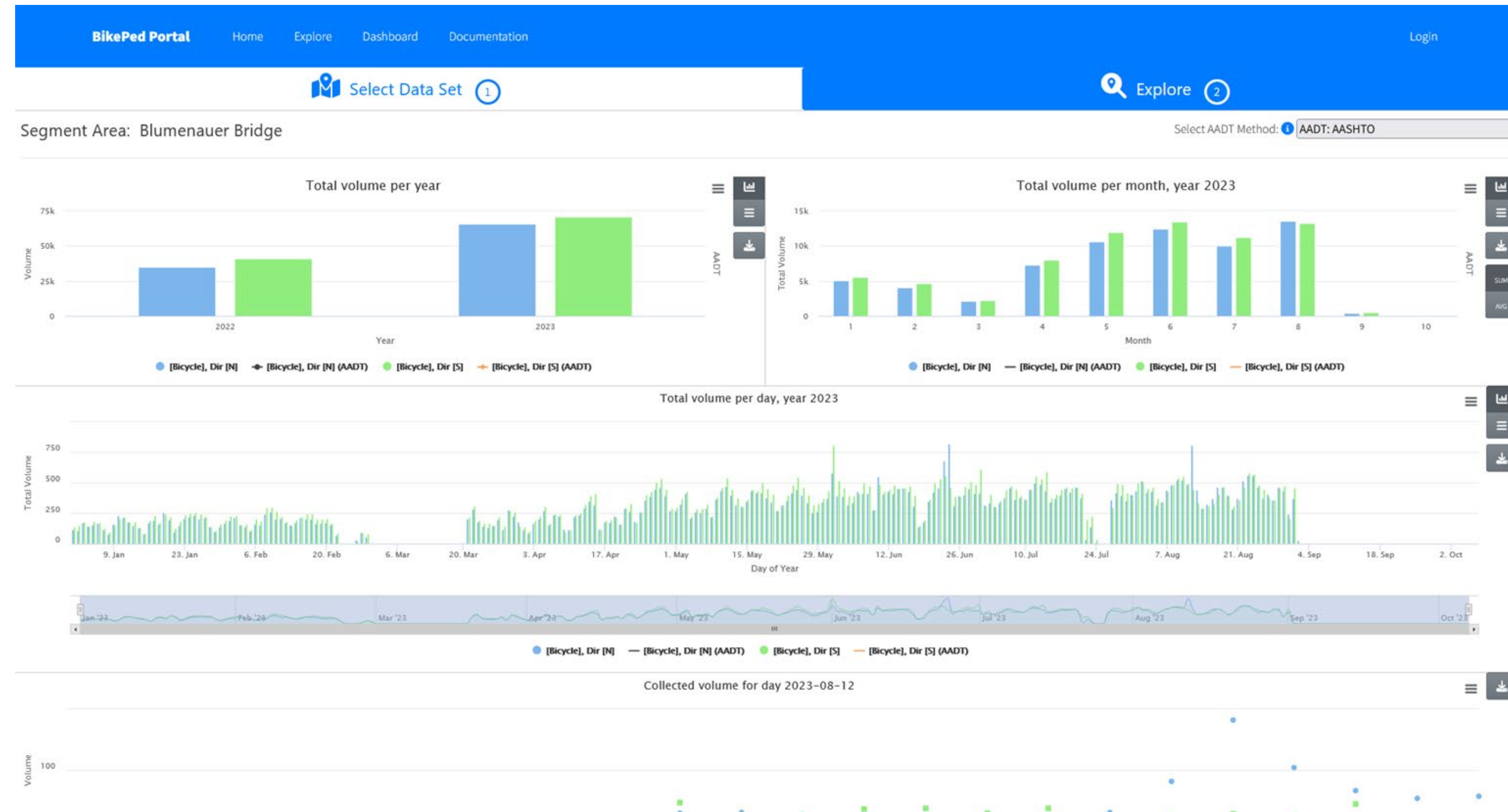
Combined Modal Volume by Season per Year





Case Study: Blumenauer Bridge

- Opened 2022
- Started counting bicyclists in August 2022
- Data is important for storytelling.





AUGUST 2023

Tilikum Crossing nearly 2000 average daily cyclists

Total volume per day, year 2023



Blumenauer Bridge nearly 1000 daily bicyclists

Total volume per day, year 2023

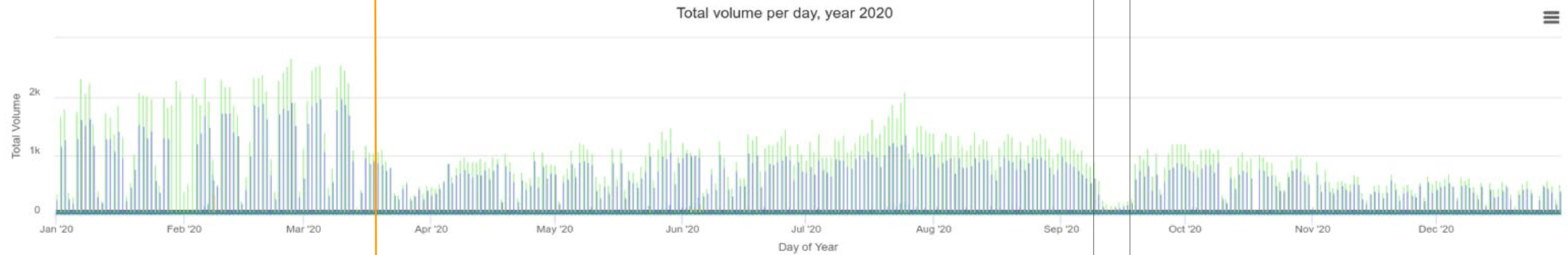


IF YOU BUILD IT, THEY WILL COME!

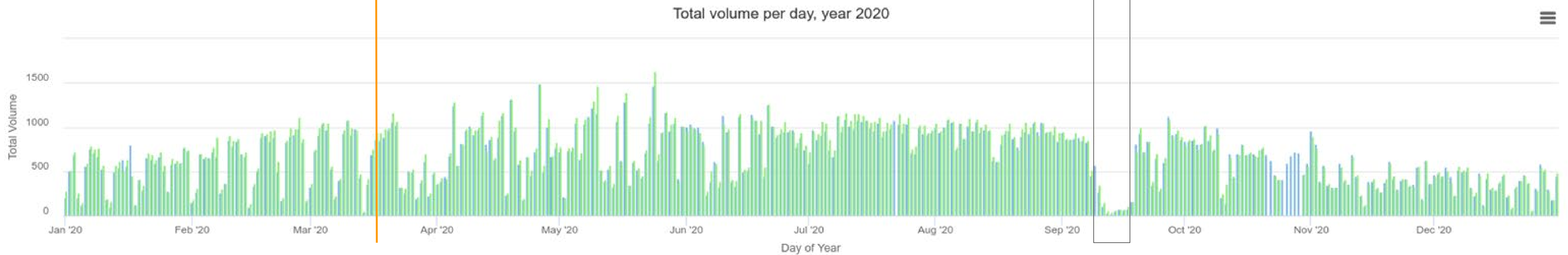


Case Study: Changes in ridership during the pandemic

Hawthorne Bridge



Tilikum Crossing



QUESTIONS?

BikePed Portal Contact:

Tammy Lee (she/her)
Transportation Data Manager
leetam@pdx.edu
bikeped.trec.pdx.edu

e-Bikes Contact:

John MacArthur (he/him)
Sustainable Transportation
Program Manager
jhmacart@pdx.edu
trec.pdx.edu

Flood Safe Columbia River Project Update

Colin Rowan

Director of Planning & Public Affairs



FLOOD SAFE
COLUMBIA RIVER

Our Region's Levee System

- Conveyance and flood-control system
 - **27** miles of federally authorized levees
 - **45** miles of waterways
 - **12** pump stations



WHAT IT PROTECTS



Nearly 8,000
residents



50% of the region's
manufacturing and
warehouse jobs



2nd largest source of
drinking water in Oregon



22M passengers
use PDX annually



\$16B in annual
economic activity



2,000+ acres of
natural habitat
and open space

The Trails and Levee Nexus

- Multi-use paths are great all-season access roads for our operations team
- Frequent trail users can help identify levee issues
- We partner with other agencies to operate and maintain trails
- About 16 miles of the 27 miles of levees have MUPs (60%)



FLOOD SAFE
COLUMBIA RIVER

*Protecting communities and
improving the natural environment
in a changing climate*

**Major floods are increasing
with climate change and the
Portland region is at risk.**

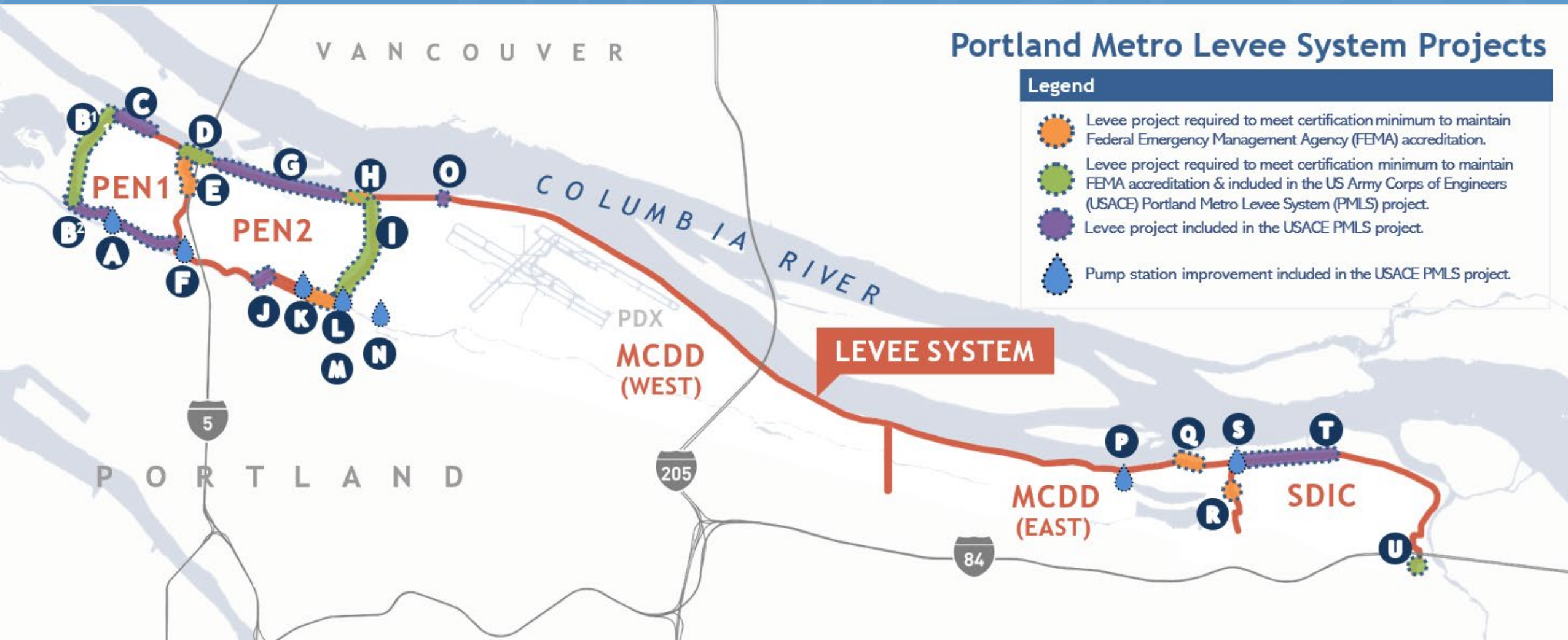


IT HAPPENED HERE BEFORE

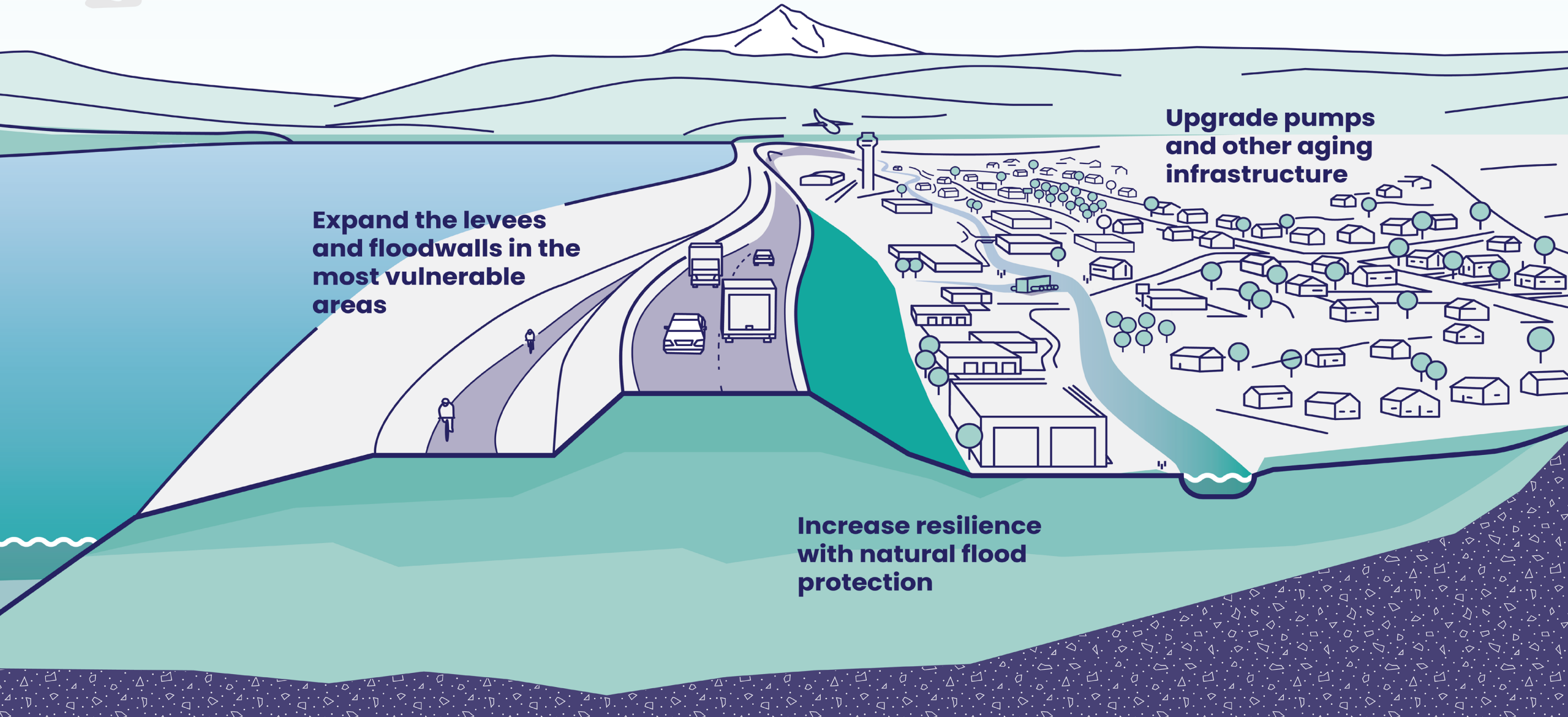


System Deficiencies and Projects

- Joint Army Corps of Engineers Projects
- Projects to address deficiencies not included in the Corps Project



THERE ARE SIMPLE, COST-EFFECTIVE SOLUTIONS



Upgrade the levees and floodwalls in the most vulnerable areas

- Build a new levee along the railroad embankment that failed in the Vanport Flood.
- Upgrade levees to meet modern standards of flood protection.
- Rehabilitate and replace drainage infrastructure to reduce pressure on the levees.



Upgrade pumps and other aging infrastructure

- Increase capacity to remove water by upgrading failing and underperforming pump stations.
- Add backup power generation to reduce risk.
- Safe and functional facilities for flood preparedness.



Increase resilience with natural flood protection solutions

- Open spaces and wetlands:
 - Slow and store floodwaters
 - Reduce pressure on flood control infrastructure
 - Support clean water
 - Provide habitat for fish and wildlife



WINDOW OF OPPORTUNITY

\$100M

Congress has authorized **nearly \$100 million** to improve our flood protection system, provided there is a local funding match. Moving forward in a timely manner is important for receiving federal funds.

Voters will be asked to approve a bond measure (\$29-41 per year for the median household)



KEY STEPS

- December 2022: Congressional Authorization for PMLS
- June 2023: Design agreement signed
- Corps PMLS Design phase kicks off TODAY, 3.5 year of design work
- Voters will be asked to approve a bond measure (\$29–41 per year for the median household)
- Corps PMLS construction phase: 2026 through 2032
- Other projects constructed 2025 through 2035





FLOOD SAFE COLUMBIA RIVER

*Protecting communities and
improving the natural environment
in a changing climate*

Colin Rowan

Director of Planning & Public Affairs
crowan@mcdd.org



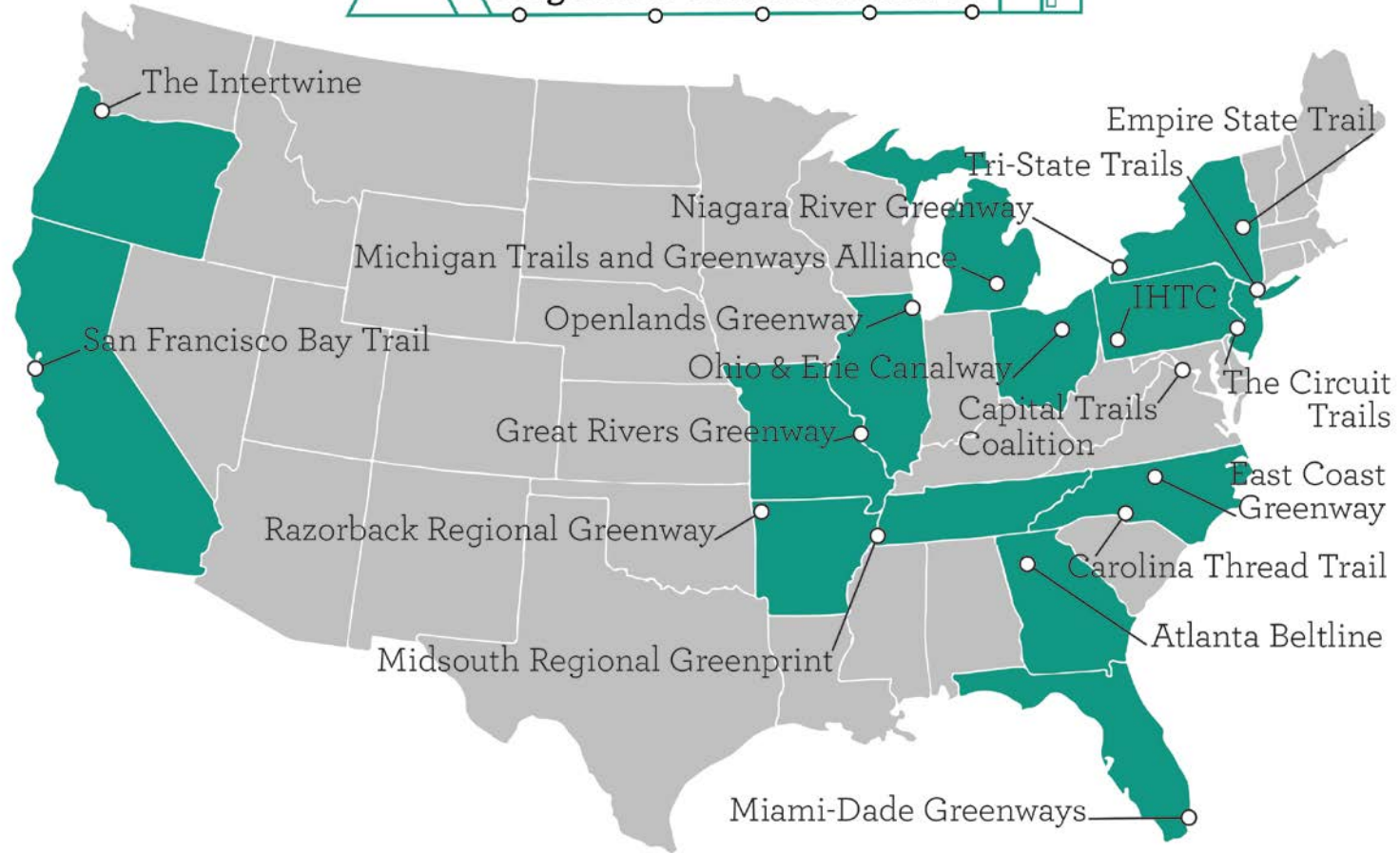
Schuylkill River Trail, Philadelphia, PA

Collaboration of Regional Trail Initiatives





Collaboration of Regional Trail Initiatives



The Circuit Trails Coalition

**THE
CIRCUIT
TRAILS**

100s OF MILES
OF HAPPY

Represented by: Bicycle Coalition of Greater Philadelphia, PA Environmental Council, New Jersey Conservation Foundation & Rails-to-Trails Conservancy

Address: 1500 Walnut Street, Suite 1107, Philadelphia, PA 19102

Email: sarah@bicyclecoalition.org

Phone: (215) 242-9253

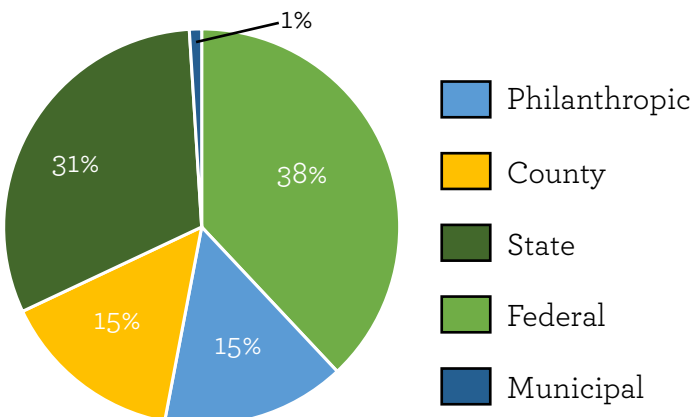
Website: circuittrails.org

Miles completed: 320 Miles

Miles proposed: 800+ Miles



Estimated Funding Sources



Potential connections: Tri-State Trails, East Coast Greenway, Enola Low Grade Trail, Appalachian Trail, Northern Delaware Greenway Trail

Key partners: Bicycle Coalition of Greater Philadelphia, PEC, New Jersey Conservation Foundation, Rails-to-Trails Conservancy, East Coast Greenway Alliance, Tri-State Transportation Campaign

Carolina Thread Trail

County Status

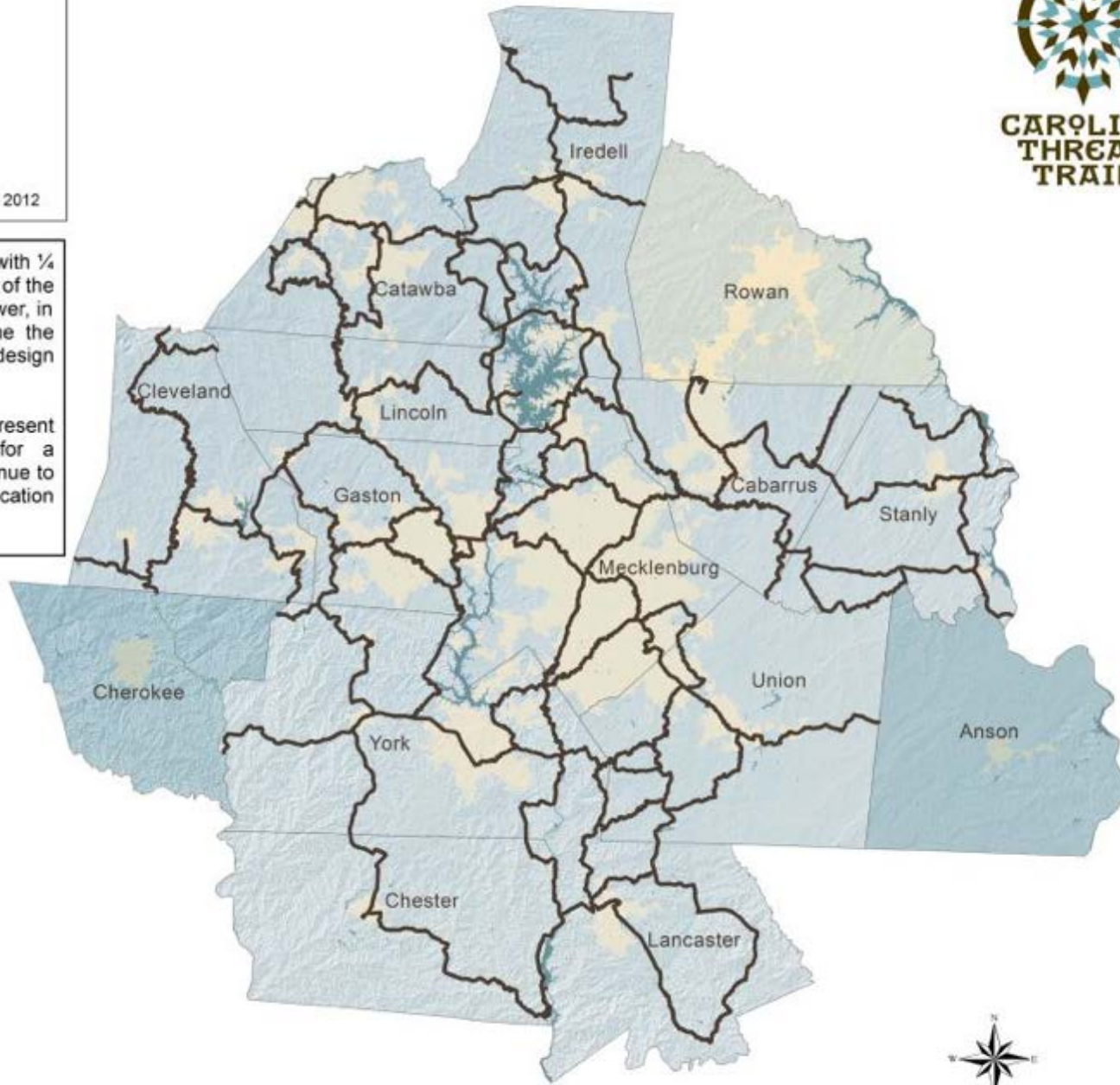
Adopted Trails: 1,311 miles

- Implementation Phase
- Outreach Phase
- Planning Phase

February 2012

The trail corridors in this plan are depicted with $\frac{1}{4}$ mile wide lines to show the general location of the intended route. The trail itself will be narrower, in recognition that communities will determine the exact location of their segments upon trail design and development.

The broadly defined greenway corridors present multiple opportunities for adjustments for a defined route, so that landowners can continue to be involved in fine tuning and defining the location of trails and amenities.





Capital Trails Coalition



Represented by: Washington Area Bicyclist Association (WABA)

Address: 2599 Ontario Rd NW, Washington, DC 20009

Email: katie.harris@waba.org

Phone: (307) 699-2236

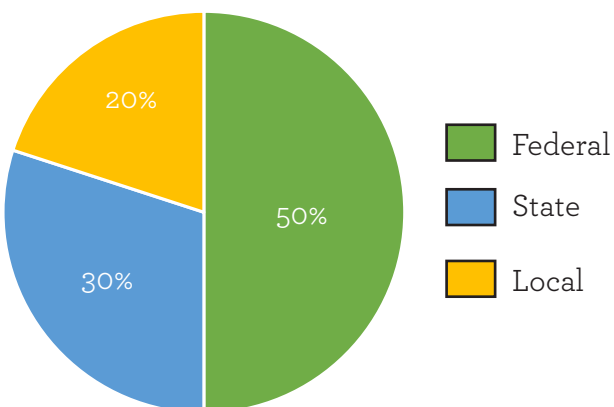
Website: capitaltrailscoalition.org

Miles completed: 276 Miles

Miles proposed: 400 Miles



Estimated Funding Sources



Potential connections: IHTC, Baltimore Trails, East Coast Greenway

Key partners: REI, Rails-to-Trails Conservancy, Depts. of Transportation, County governments, Maryland Milestones, Trust for Public Land, American Public Health Association, Metropolitan Washington Council of Governments, NoMa BID, National Park Service

Walton Family Foundation



Our private funding successes




oregonmetro.gov/trails





Metro

A photograph of a paved trail winding through a lush green forest. In the foreground, a person wearing a bright yellow-green jacket and a blue helmet is riding a bicycle away from the camera. Further ahead, a group of four people are walking towards the camera. From left to right: a man in a light blue t-shirt and khaki shorts walking a black dog; a woman in a grey jacket and dark pants; a man in a dark jacket and plaid shorts; and a woman in a green jacket and blue jeans walking a small white dog. The trail is bordered by a wooden fence and a utility pole on the left, and dense trees on the right.

Regional Trails System Plan Map

October 11, 2023



The case for trails

Climate justice

Thriving communities

Economic prosperity

Traffic safety

Transportation choices

Access to nature

Community leaders and volunteers

40-Mile Loop, npGREENWAY, SW Trails, Friends of the Trolley Trails, Access Recreation, Oregon Trails Coalition, Urban Greenspaces Institute, The Intertwine Alliance, Trailkeepers of Oregon, Portland Parks Foundation, The Street Trust, Verde, Forest Park Conservancy, local bike/ped committees



1992

Tri-County Metropolitan Region Metropolitan Greenspaces Master Plan

LEGEND

- Regionally Significant Greenspace in Public Ownership (8% Protected)
- Remaining Natural Areas (92% Currently Unprotected)
- Potential Regional Greenways (Currently Unprotected Floodplains)

- Potential Additions to the Regional Open Space System
- Greenspaces Regional Trail System
- Existing Trail Corridors
- River Trails (Canoes, Kayaks and Other Boats)
- Proposed Trails of Regional Significance
- Trails of Inter-Regional Significance
- Urban Growth Boundary (Contains Urbanized Area)



2002

Regional Trails



METRO

Regional Parks and Greenspaces

600 Northeast Grand Avenue | Portland, Oregon 97232-2736

TEL (503) 797-1850 FAX (503) 797-1849

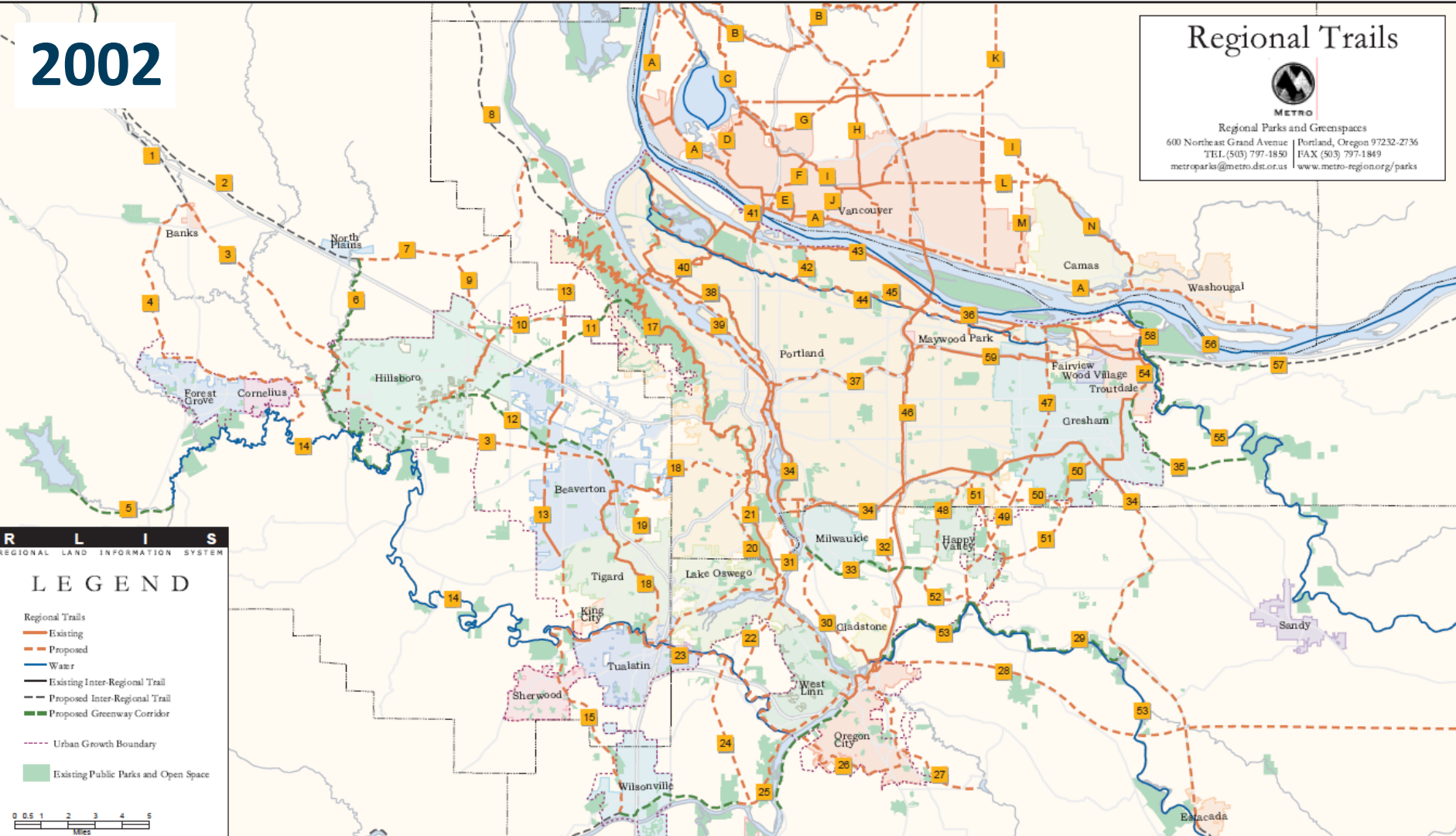
metroparks@metro.dst.or.us www.metro-region.org/parks

R L I S
REGIONAL LAND INFORMATION SYSTEM

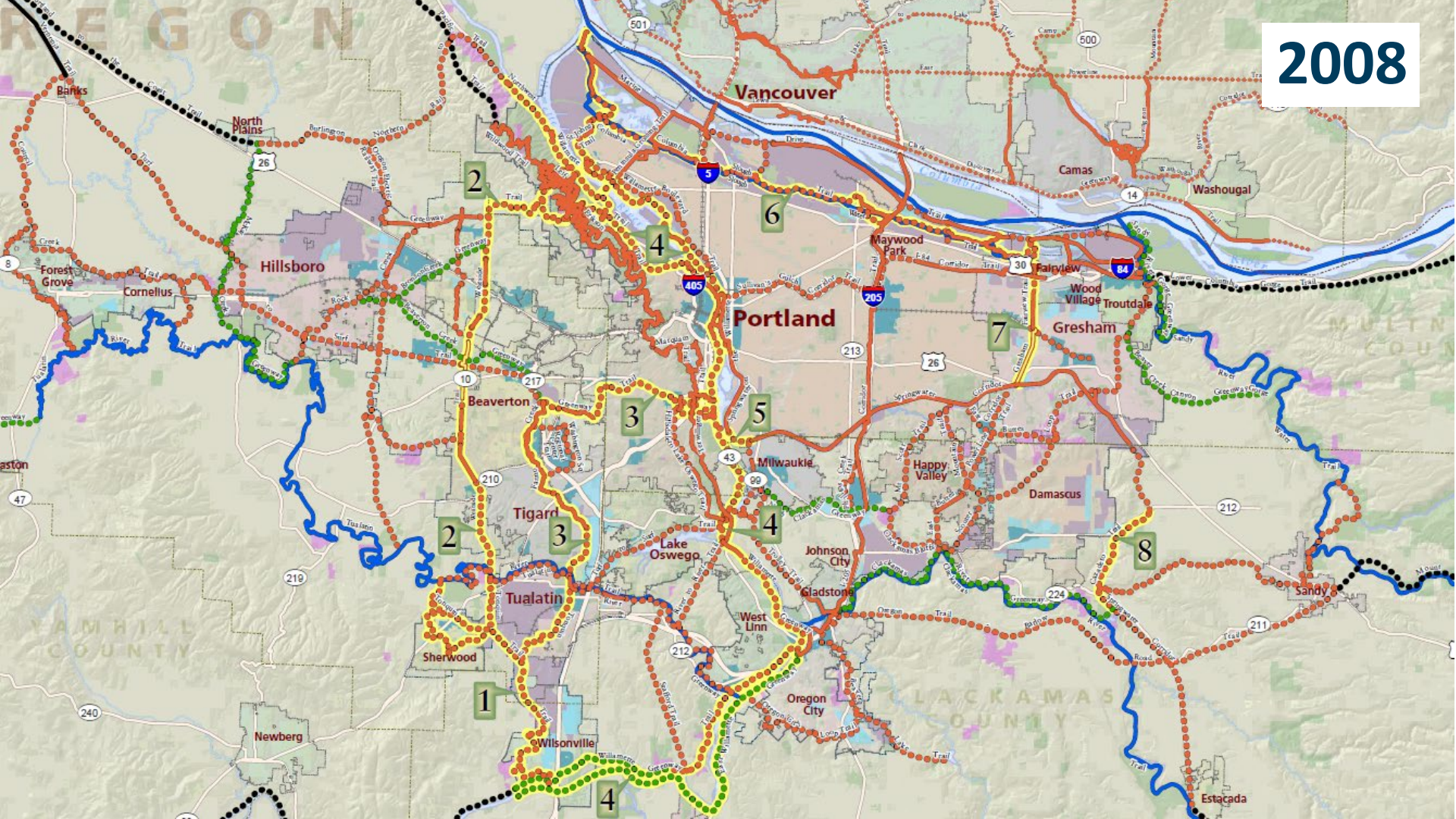
LEGEND

- Regional Trails
- Existing
- Proposed
- Water
- Existing Inter-Regional Trail
- Proposed Inter-Regional Trail
- Proposed Greenway Corridor
- Urban Growth Boundary
- Existing Public Parks and Open Space

0 0.5 1 2 3 4 5
Miles








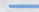
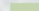


2008

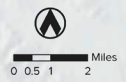


Regional trails and greenways

2014

 Metro
oregonmetro.gov
June 2014

-  Existing Pedestrian Trail
-  Planned Pedestrian Trail
-  Existing Multi-use Trail
-  Planned Multi-use Trail
-  On-street Connection
-  Proposed Trail
-  Water Trail
-  Greenway
-  Parks and Natural Areas

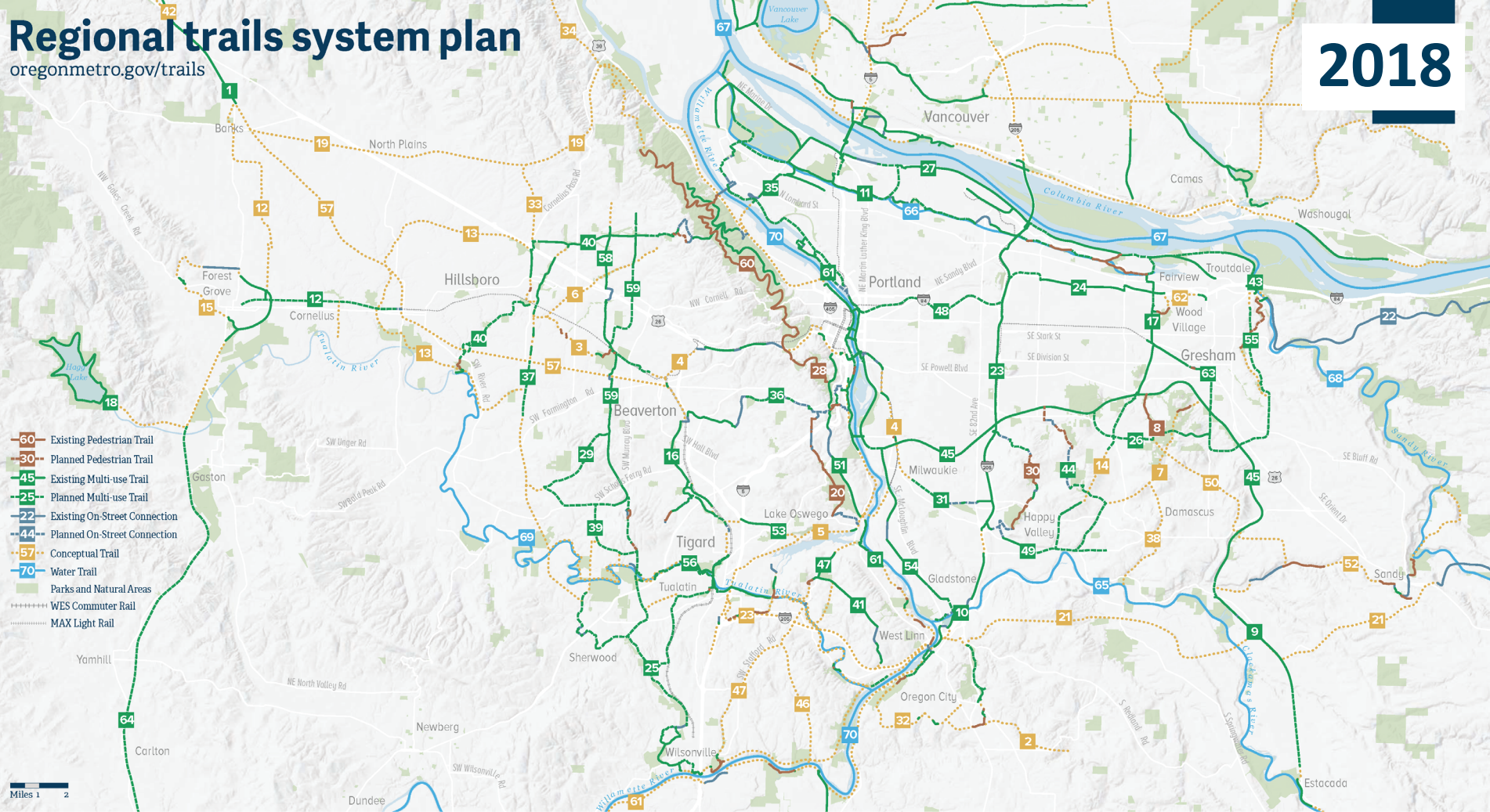


- | | | | | | | | | |
|-------------------------|------------------------|---------------------------------|------------------------------|---------------------------|-----------------------------------|-------------------------|-----------------------------|-----------------------------|
| 1. Banks-Vernonia Trail | 8. Butler Buttes Trail | 15. Crown Zellerbach Trail** | 22. Highway 47 Trail | 29. Ice Age Tonquin Trail | 36. Oregon City Loop Trail | 43. River Terrace Trail | 50. Stafford to Canby Trail | 58. Trolley Trail |
| 2. Beaver Creek Trail | 9. Cazadero Trail | 16. East Buttes Powerline Trail | 23. Hillsboro to Banks Trail | 30. Kelley Creek Trail | 37. Oregon Electric Railway Trail | 44. Rock Creek Trail | 51. Stafford Trail | 59. Tualatin River Greenway |

Regional trails system plan

oregonmetro.gov/trails

2018



Regional trails system plan

oregonmetro.gov/trails



- Existing trail
- Planned trail
- Conceptual trail
- Water trail

1. Banks-Vernonia Trail
2. Beaver Lake Trail

9. Cazadero Trail
10. Clackamas River Greenway

17. Gresham-Fairview Trail
18. Hagg Lake Trail

25. Ice Age Tonguin Trail
26. Kelley Creek Trail

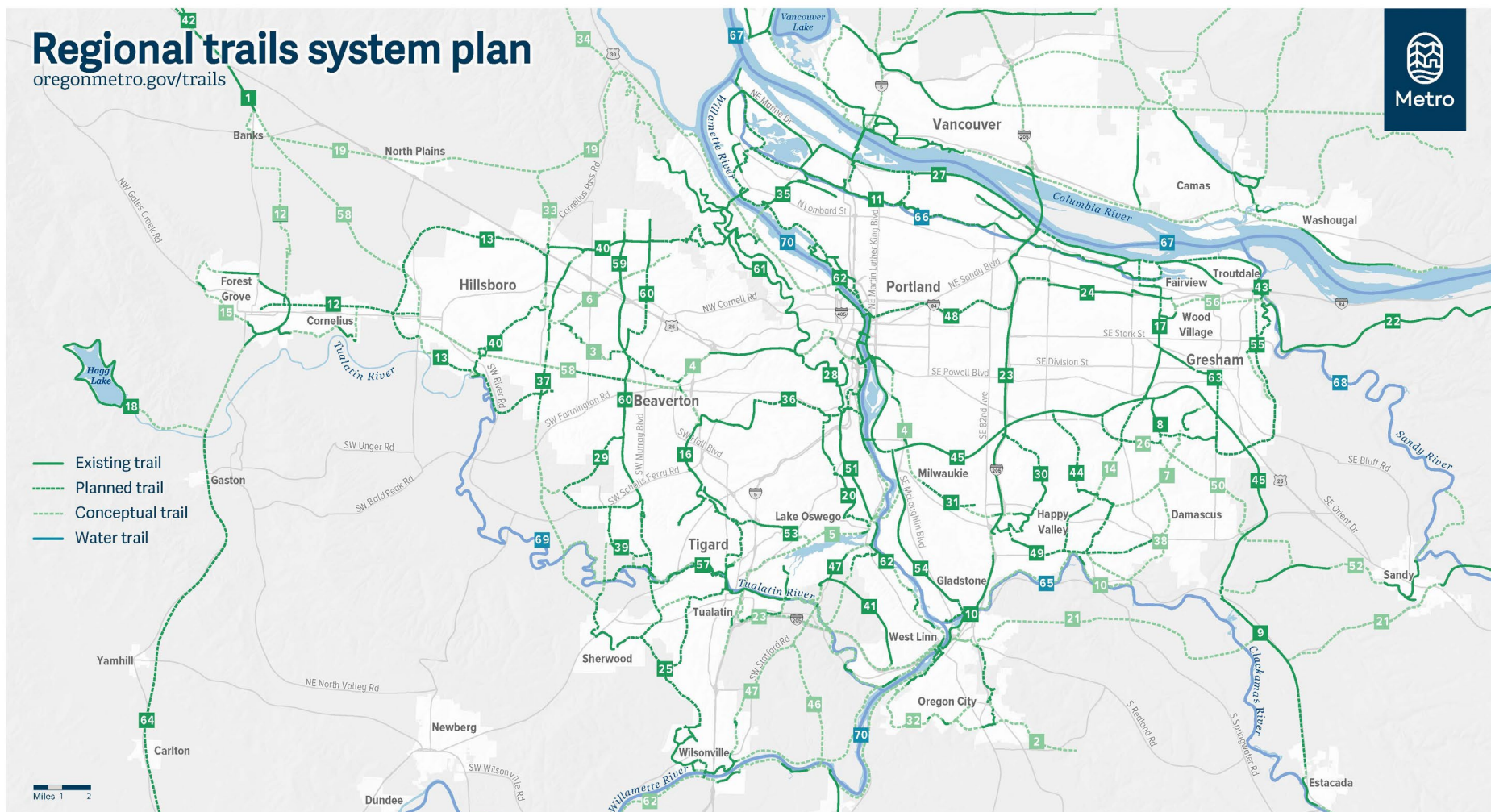
33. Oregon Electric Railway Trail
34. Pacific Greenway Trail

41. Rosemont Trail
42. Salmonberry Trail

49. Sunrise Corridor Trail
50. Sunshine Valley Trail

57. Tualatin River Greenway
58. Tualatin Valley Trail

Water Trails



oregonmetro.gov/trails



9. Cazadero Trail
10. Clackamas River Greenway

17. Gresham-Fairview Trail
18. Hagg Lake Trail

25. Ice Age Tonquin Trail
26. Kelley Creek Trail

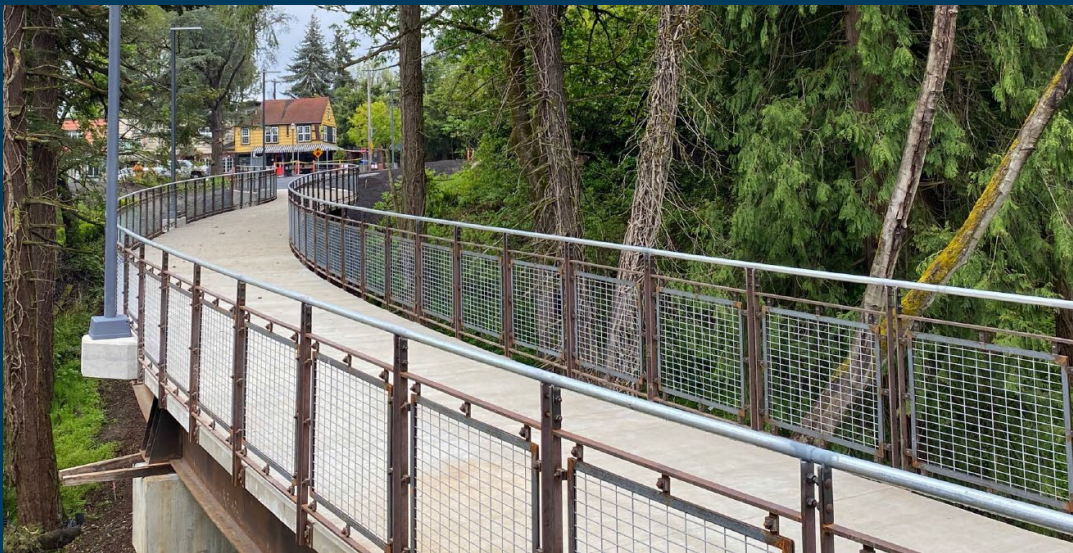
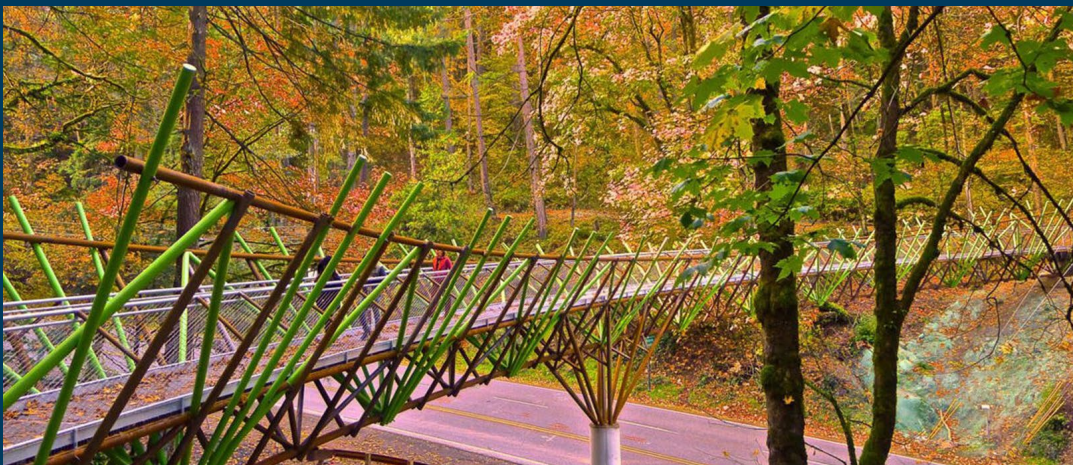
33. Oregon Electric Railway Trail
34. Pacific Greenway Trail

41. Rosemont Trail
42. Salmonberry Trail

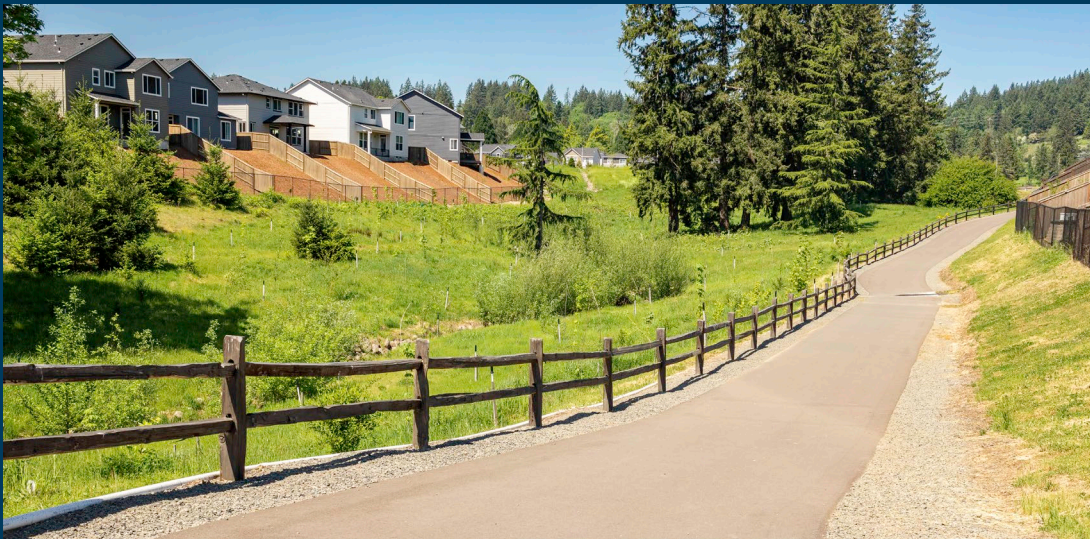
49. Sunrise Corridor Trail
50. Sunshine Valley Trail

57. Tualatin River Greenway
58. Tualatin Valley Trail

Water Trails



S.W. Portland



Happy Valley



Waterhouse Trail, THPRD



Image credit: THPRD

Gresham-Fairview Trail

Gresham-Fairview Trail

TRAIL RULES:



Yield to pedestrians.



Keep animals under control. Keep pets on a leash and waste must be removed.



Keep the trail clean.



Stop at intersections and obey all traffic laws.



Keep right and pass on the left.



Motorized vehicles are prohibited.



Please be respectful of neighbors.

In an emergency dial

911

Gresham Police Dept.
Non-Emergency Dispatch

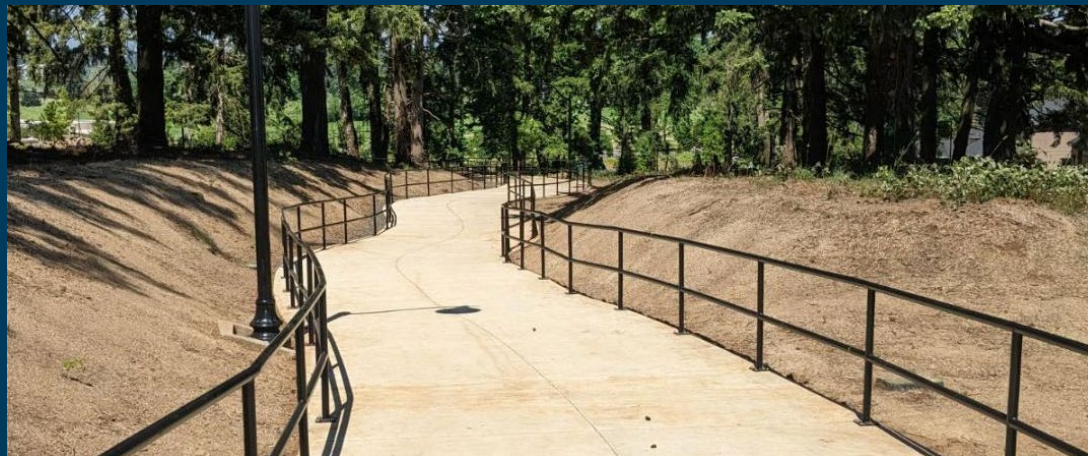
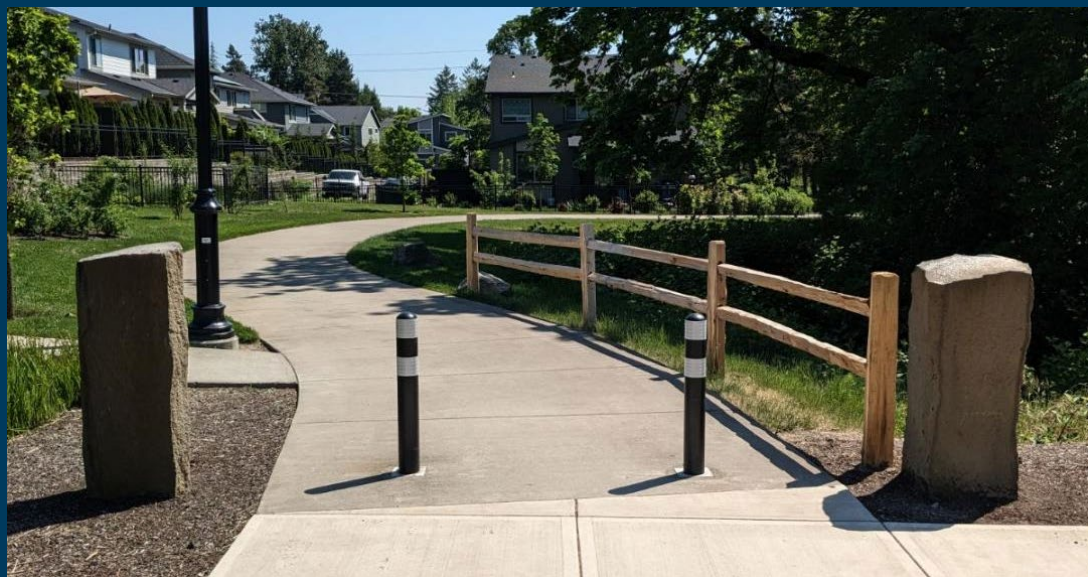


Image credit: Gresham

Crescent Park Greenway, Hillsboro



Image credit: City of Hillsboro



Wilsonville

Fanno Creek Trail, Tigard

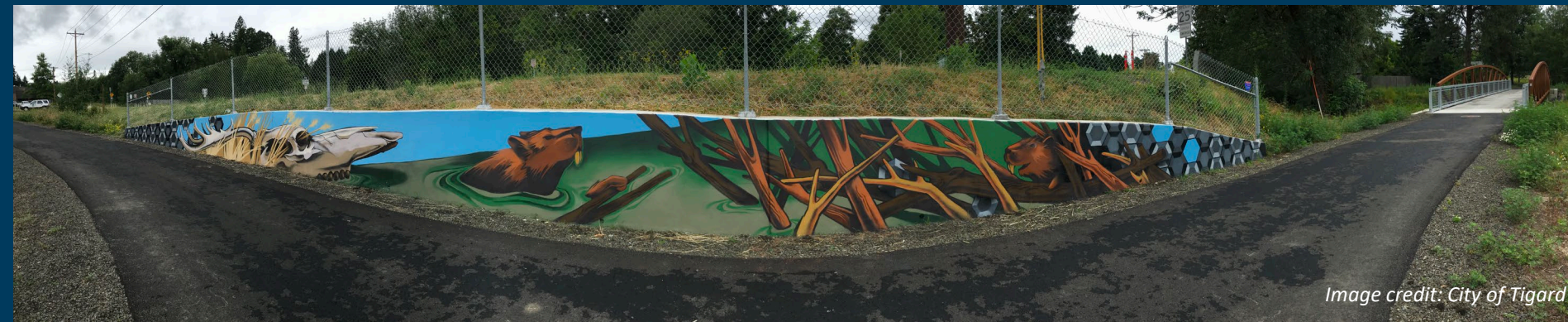
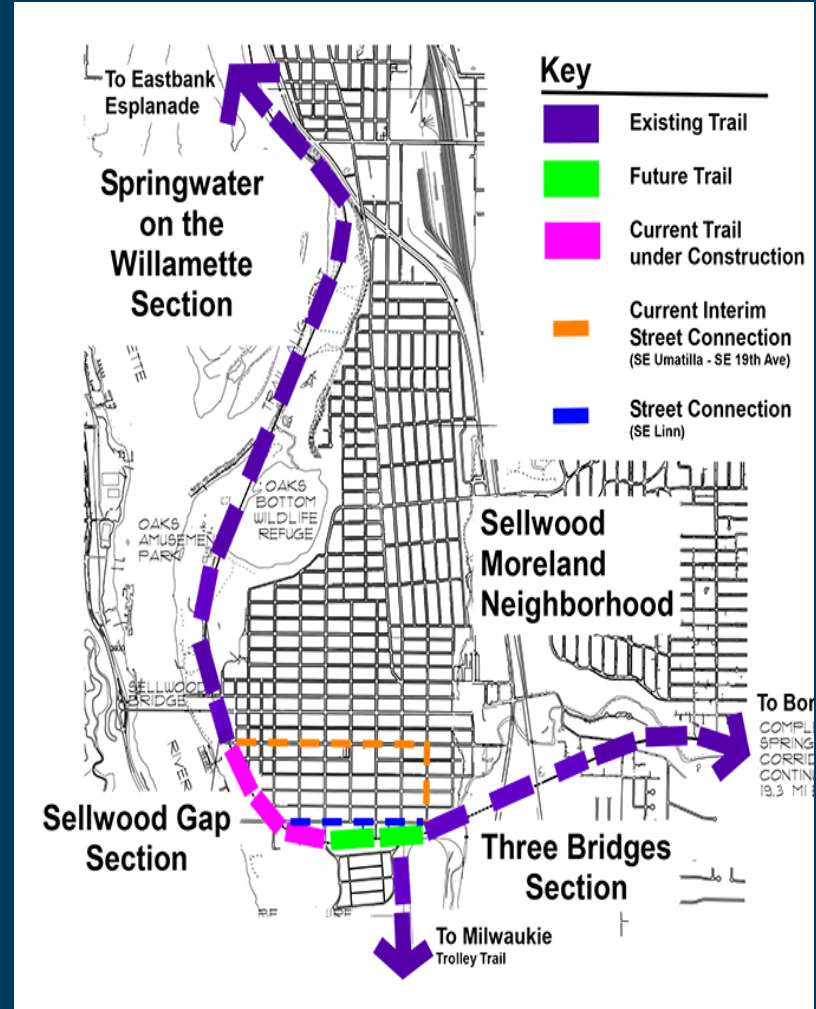


Image credit: City of Tigard

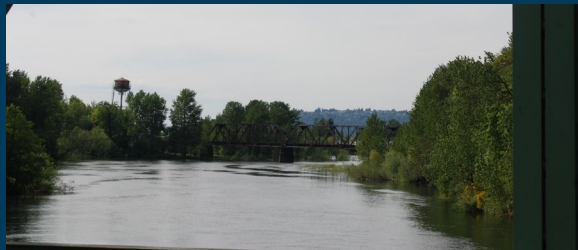
Sellwood Gap

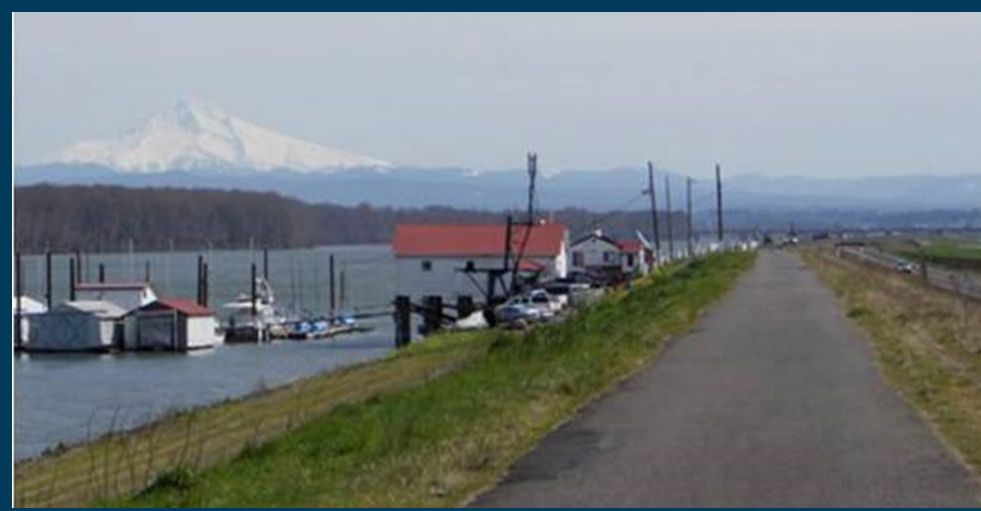


More trails coming soon!



Sandy River Waterfront Trail





Columbia Slough & Marine Drive Trails





Fanno Creek Trail

Image credit: Greenworks



St. Johns Prairie



Council Creek Trail

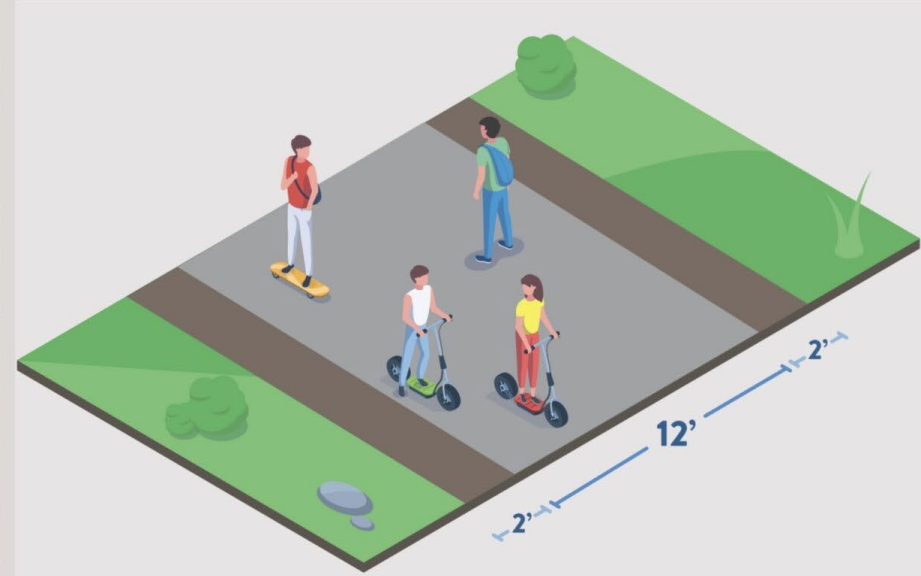
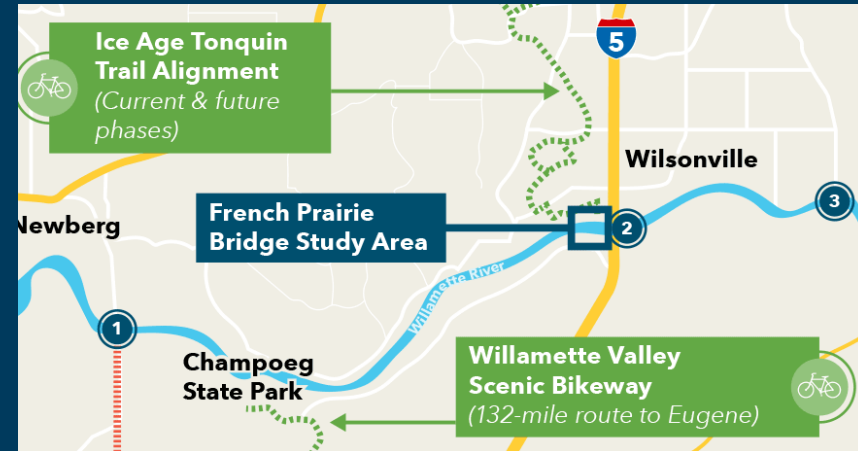


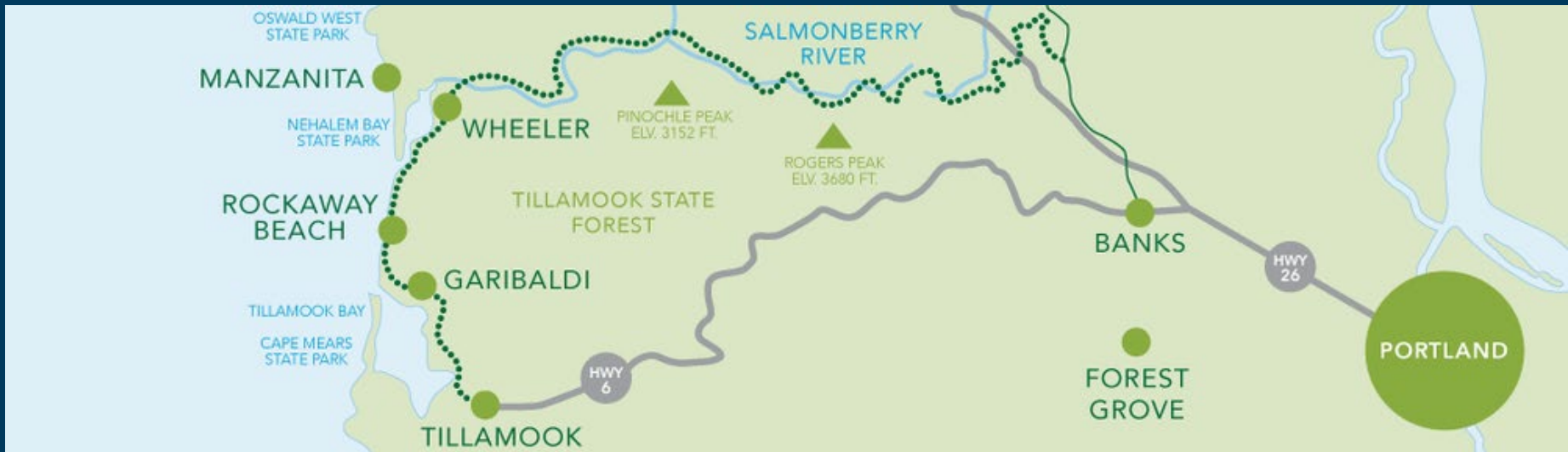
Photo credit: Washington County



Image credit: City of Wilsonville

French Prairie Bridge





Salmonberry Trail

Historic Columbia River Highway State Trail



Photo credit: Bike Portland

Thank you!



Experience Your America



Rivers, Trails and Conservation Assistance Program (RTCA)

National Park Service



Technical Assistance for Locally Driven
Conservation & Recreation Projects

National Park Service



A Community Resource of NPS

EXPERIENCE
YOUR
AMERICA

Rivers & Trails staff work with community groups and local and State governments to:

- **Conserve rivers**
- **Preserve open space**
- **Develop trails & greenways.**



National Park Service



What We Do

- Respond to requests for assistance
- Work on locally-led, locally-driven projects
- Provide planning & project management expertise



EXPERIENCE
YOUR
AMERICA

National Park Service



How We Work

EXPERIENCE
YOUR
AMERICA

- **Work with a primary cooperator & a planning group**
- **Projects are collaborative & consensus-driven**
- **Heavy emphasis on public involvement**



National Park Service



EXPERIENCE
YOUR
AMERICA



Some examples of RTCA trail projects in P-V Metro Area

- Intertwine Bi-State Regional Trail Plan
- Lewis & Clark Regional Trail (Clark County, WA)
- Crescent Park Greenway (Hillsboro)
- Hogan Butte Trail System (Gresham)
- Washougal Waterfront Park & Trail
- Hood River County Trail System Plan
- Wyeth Bench Trail System (Cascade Locks)
- Willamette River Water Trail
- Lake – lewis River Water Trail (City of Vancouver)
- Yamhelas Westsider Trail (Yamhill County)

National Park Service



EXPERIENCE
YOUR
AMERICA



For More Info & How To Apply

-- Visit our website: www.nps.gov/rtca

-- Discuss your project with RTCA staff

Contact Dan Miller dan_miller@nps.gov

-- Submit an application before March 1st

- have a clear project vision in mind
- be ready to go, with most partners on board
- get letters of support
- line up resources (meeting spaces, maps, etc.)



NPS-RTCA

Rivers, Trails and Conservation Assistance Program



About Us. The National Park Service – Rivers, Trails and Conservation Assistance program (NPS-RTCA) works with hundreds of partners across the United States to turn their conservation and outdoor recreation visions into a reality. Through an annual application process, our NPS staff are invited to assist communities, nonprofits, government institutions, tribes and land management agencies on their projects.

How We Work. NPS-RTCA is a unique federal program that supports community-led projects by leveraging resources through diverse partnerships. Though we are not a funding program or a “traditional consultant,” we align the planning, design and technical expertise of NPS staff with the skills and abilities of our project partners. Depending on the scale of the project, NPS-RTCA can invest up to four years on developing a clear direction and evolving community synergy for their project.

Community Engagement. Although each community project is different, NPS-RTCA strives to achieve successful outcomes by engaging the community in the vision and planning process, ensuring the project provides equitable and inclusive access for all, leveraging resources from those with shared goals, and developing strategies that nurture and sustain the project. Together, with our partners, NPS-RTCA strives to move the needle on conservation and outdoor recreation in America.

The National Park Service is not just about national parks, we're about your parks.



Focus Areas

NPS-RTCA supports diverse community-led projects.



Build Healthy Communities Through Parks, Trails and Outdoor Opportunities

- **Parks.** Create a system of parks for all Americans.
- **Restoration.** Restore blighted lands for public use.
- **Access to Outdoor Recreation.** Develop or improve outdoor recreation access to lands and waters.
- **Health.** Develop parks and outdoor recreation opportunities to support community health goals.
- **Heritage.** Tell community stories by integrating history and culture into their local projects.



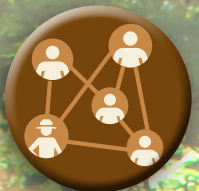
Conserve Natural Lands, Rivers and Watersheds

- **Climate Change Adaptation.** Evolve ecosystem services using parks, greenways and conservation areas to support community resiliency to a changing climate.
- **Land and Habitat Conservation.** Assist communities in developing land protection and conservation strategies.
- **River Restoration.** Restore rivers and riparian areas to their natural systems.



Strengthen the Organizational Capacity of Community Partners

- **Collaboration.** Bring stakeholders together to implement shared ideas and goals, and to leverage skills and resources.
- **Organizational Development.** Strengthen the capacity of community organizations to support conservation and outdoor recreation outcomes.



Enhance Community and National Park Service Networks

- **Natural Disasters.** Assist communities that are impacted by natural disasters to integrate conservation and outdoor recreation into their recovery.
- **Gateway Communities.** Facilitate implementing shared goals between local communities and neighboring public land managers.



Engage Youth in Outdoor Recreation and Stewardship

- **Program Development.** Support organizations that work to provide youth with life-long outdoor recreation projects.
- **Engage Youth.** Incorporate youth into the community planning and development of conservation and outdoor recreation projects.

Newsletters

Click on any link below to explore how NPS-RTCA works with various communities, governments, nonprofits and tribes. The newsletters are organized by themes relevant to our work.

Subscribe: Visit [this link](#) to subscribe to the NPS-RTCA program newsletter.

[Rivers](#)

[Conservation](#)

[Healthy Recreation](#)

[Outdoor Recreation](#)

[Active Transportation](#)

[Working with National Parks](#)

[Connecting Communities by Trails](#)

[Inspiring Youth Through the Outdoors](#)

[Connecting People to Parks Through Art](#)

[Native American Community-Led Projects](#)

[Preserving Cultures and Telling Their Stories](#)

[Groundwork: 21st Century Conservation Partnership](#)





The National Park Service preserves unimpaired the natural and cultural resources and values of the National Park System for the enjoyment, education, and inspiration of this and future generations. The Park Service cooperates with partners to extend the benefits of natural and cultural resource conservation and outdoor recreation throughout this country and the world.



nps.gov/RTCA

Rivers, Trails and Conservation Assistance Program
National Park Service
U.S. Department of the Interior





U.S. Department
of Transportation
Federal Highway
Administration



Oregon Parks and Recreation Department Recreation Grant Programs



OPRD Recreation Grant Programs

Recreational Trails Program (RTP)

- Staff contact: Jodi Bellefeuille

Land & Water Conservation Fund (LWCF)

- Nohemi Enciso

Local Government Grant Program (LGGP)

- Mark Cowan

All Terrain Vehicle Grant Program (ATV)

- Ian Caldwell, Mike Law

County Opportunity Grant Program (COG)

- Mark Cowan

<https://Oregon.gov/OPRD/GRA>

Detailed program information



*McDonald Forest, OSU
Trail development supported by RTP*





Local Government Grant Program (LGGP)

Project Types:

- Wide variety of outdoor recreation facilities, including trails.

Funding:

- Approximately **\$15 Million** annually (Oregon State Lottery)
- **Match requirement varies by population (20-50%)**

Funding Categories:

- **Small Grants:** Up to \$100,000
- **Large Grants:** Up to \$1,000,000
- Master Planning: \$40,000 max, eligibility limited by population

Applicants: Cities, Counties, Metro, Park and Recreation Districts, and Port Districts

Next Grant Cycle: January 2024





Recreational Trails Program (RTP)

Purpose: To provide, expand, and improve public recreational trails for motorized and non-motorized use.

Funding: Approximately **\$1.5 million annually**

- 30% set aside for motorized trails
- \$10,000 minimum award
- \$150,000 recommended maximum award for non-motorized trail proposals
- No maximum for motorized proposals
- **20% match required**

Next grant cycle: September 2024





Land & Water Conservation Fund (LWCF)

Project Types:

- Wide variety of outdoor recreation facilities, including trails.

Funding:

- Approximately **\$4 million annually**
- 60% of funds for local gov'ts, up to 40% for state agencies
- **50% match requirement**

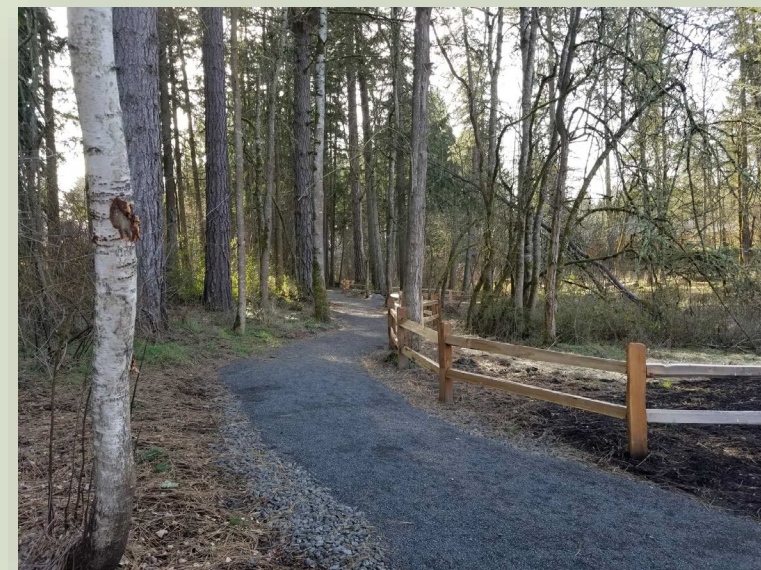
Applicants: local, state, and tribal governments

Public Use:

- Park boundary must be dedicated for public recreation use in perpetuity
- Trail projects within existing LWCF boundaries are a great fit

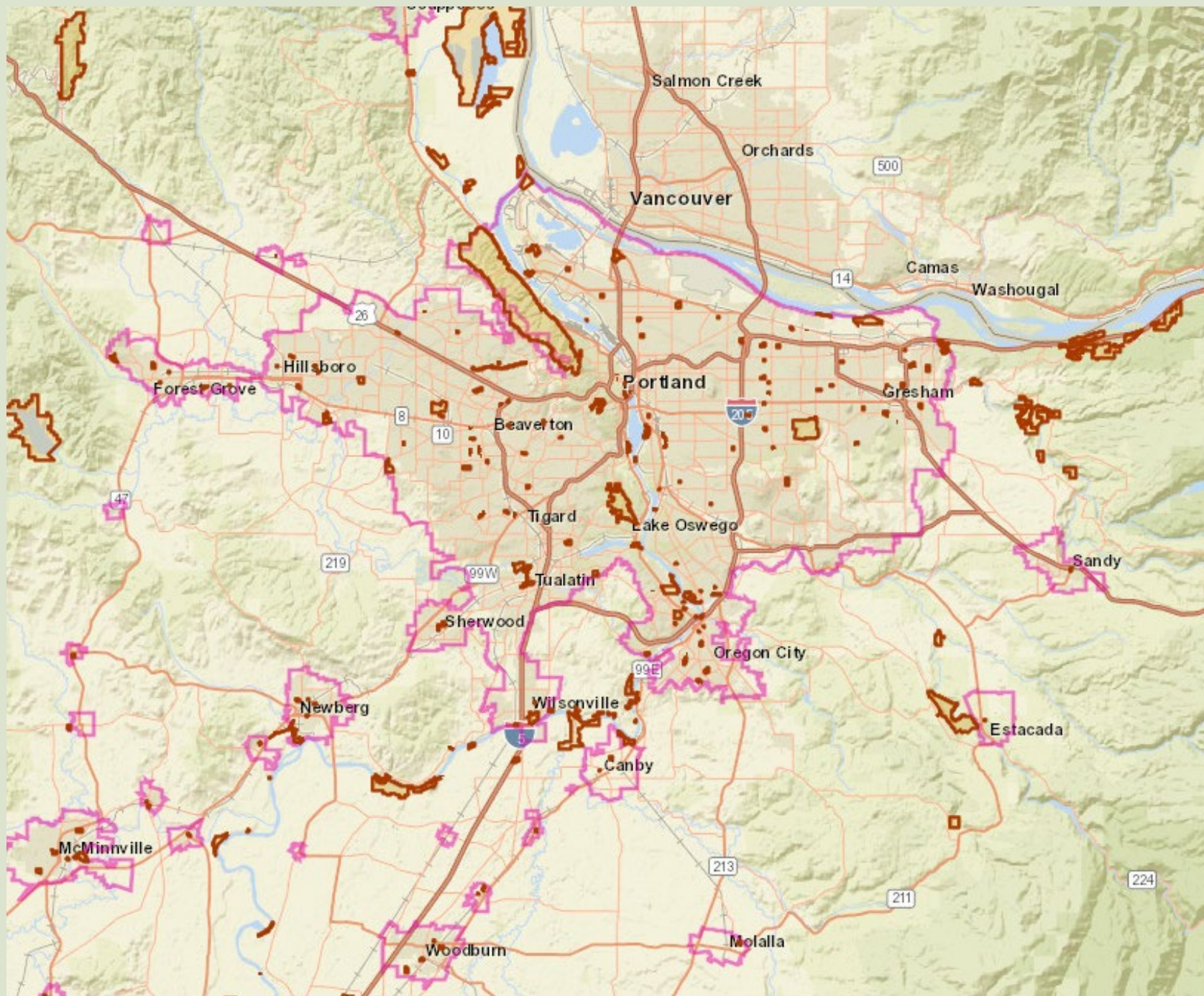
Grant cycle open now!

- Applications due November 1



*Crowell Woods Neighborhood Park,
Tualatin Hills Park & Recreation District
Supported by LWCF*





Interactive map of Oregon LWCF sites

***Link to map found
on OPRD's LWCF
webpage***

Resources

- Online Grants System
- SCORP
- Statewide Trails Plan
- Parkland Mapping Project
- Potential Outdoor Recreation Funding Sources
- Potential Trail Funding Sources
- Non-Motorized Trail Cost Estimator
- Interactive Map of Oregon LWCF Sites
- Playbook LWCF Resource Hub


Contact us - we're here to help!

oregon.gov/oprd/Pages/index.aspx

RTPFHWA 23USC206 2CFR200 OPRIS OPRDGrants RTP ORTAC BSCMP WRKDY OPRIS.Test GrantsTest


Office of the State of Oregon [How you know »](#)

Home About Us Commissions & Advisory Committees Careers & Employment Office of Outdoor Recreation




Parks, Campgrounds, Beaches

- [Find Parks and Campgrounds](#)
- [Buy a State Park Day-Use Parking Permit](#)
- [The Beach and Safety](#)
- [Western Snowy Plover Protections](#)
- [Hike The Oregon Coast Trail](#)




Ride ATVs

- [Safety Card/Training](#)
- [Buy an ATV Permit Online](#)
- [Places to Ride](#)
- [ATV Things to Know](#)
- [Youth Riders](#)




Preserve History

- [SHPO Project Review and Compliance](#)
- [Find or Designate a Historic Place](#)
- [I Found an Artifact](#)
- [Oregon Main Street](#)
- [Technical Resources for Preservation](#)




Apply for Grants

- [County Opportunity Grants](#)
- [Land and Water Conservation Fund](#)
- [Local Government Grants](#)
- [Recreational Trails Grants](#)



Plans, Rules, Permits

- [Comment on Proposed Rulemaking](#)
- [Rules and Laws](#)
- [Park Master Plans](#)
- [Statewide Comprehensive Outdoor Recreation Plan](#)



Bikeways, Waterways, Trails

- [Designate a Scenic Bikeway](#)
- [Designate a Scenic or Regional Trail](#)
- [Potential Scenic Waterways](#)
- [All Designated Scenic Waterways](#)



OPRD Recreation Grants and Community Programs

OPRD awards grants to communities across Oregon to acquire, develop, improve, and maintain public recreation facilities. Over \$13 million of grant funding is awarded by OPRD each year to support recreation on public lands.

Recreational Trails Program
Federally funded grants for non-motorized trail development and restoration projects. Eligible applicants include cities, counties, and local recreation land managers. Non-profit groups may also apply with approval of the land manager.

Local Government Grant Program
Lottery funded grants for public outdoor recreation facilities including trails, sports fields, playgrounds, picnic facilities, campgrounds, parking areas, and more. Eligible applicants include cities, counties, park districts, and port districts.

Land and Water Conservation Fund
Federally funded grants for the acquisition, development, or restoration of public outdoor recreation facilities including trails, sports fields, playgrounds, picnic facilities, campgrounds, parking areas, and more. Eligible applicants include cities, counties, park districts, and port districts.

All-Terrain Vehicle (ATV) Grants
Grants funded by ATV registration permits and state fuel tax to support motorized trails across Oregon. Projects funded by ATV grants include trail development, trail maintenance, trail development, law enforcement, and land acquisition. Eligible applicants include federal, state, and local managers of public OHV riding areas. Nonprofit organizations may also apply.

County Opportunity Grants
Grants awarded to counties to develop, improve or plan county operated camping facilities. Funds for these grants come from RV registration fees.

Certified Local Government Grant
Eligible Projects—Improvement projects involving trails, playgrounds, picnic facilities, campgrounds, parking areas, and more. Projects must be approved by the local government and the OPRD. Projects must be approved by the local government and the OPRD. Projects must be approved by the local government and the OPRD.

Oregon Historic Cemetery Grant
Eligible Projects—Any cemetery in Oregon, regardless of age, that is owned by the state, a local government, or a private entity. Projects must be approved by the local government and the OPRD. Projects must be approved by the local government and the OPRD. Projects must be approved by the local government and the OPRD.

Oregon Main Street Revitalization Grant
Eligible Projects—Acquisition, revitalization, or restoration of properties within an Oregon Main Street district that are owned by a private entity. Projects must be approved by the local government and the OPRD. Projects must be approved by the local government and the OPRD. Projects must be approved by the local government and the OPRD.