

# JONES CEMETERY

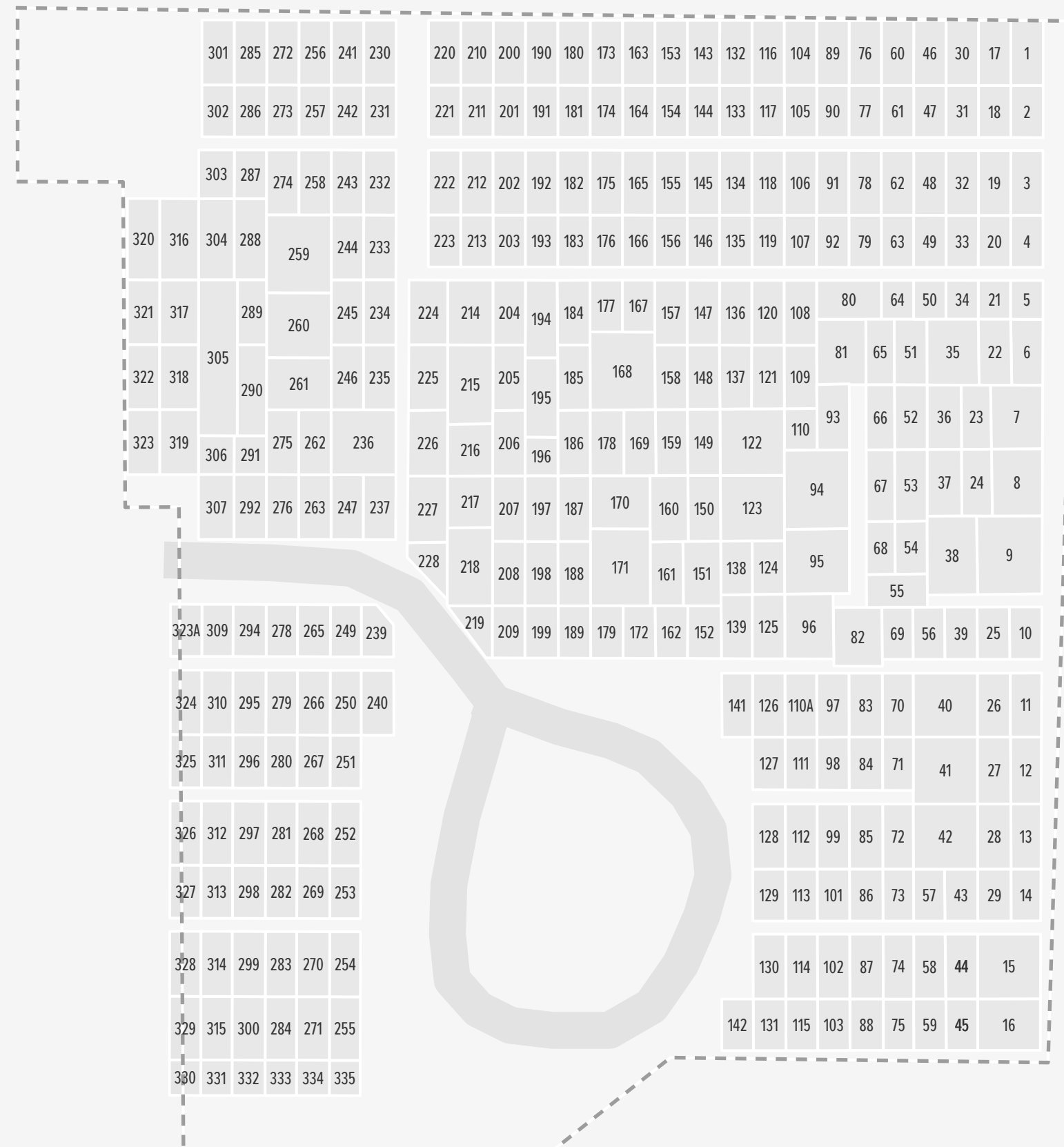
5763 SW Hewett Blvd, Portland

Established 1854

Hidden in Portland's Sylvan neighborhood, this 3.5-acre green jewel perches high on a south-facing hill, with open lawns and views across the Tualatin Valley to the Chehalem Mountains. A large section of grave spaces are owned by Congregation Havurah Shalom. Burial in those sites are available to Havurah members.



Metro



During inclement weather, please check [oregonmetro.gov/cemeteries](http://oregonmetro.gov/cemeteries) for information about any closures.

0 50 100 Feet

Map published: 11/21/2022

