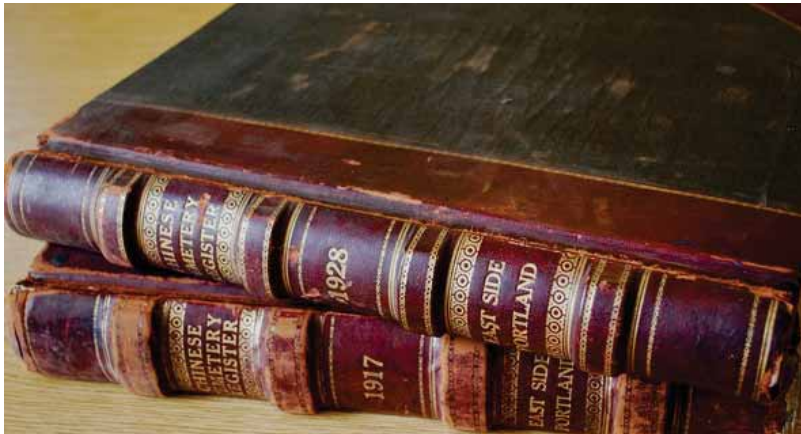


Cultural heritage and healing garden

文化遺產和療癒花園



Metro



Focus Group Sessions - November 2022

焦點團體會議- 2022年11月

Agenda

議程

Introduction

History

Reflection

Break

Discussion

Next steps

概述

歷史

思考與反饋

休息

專題研討

後續工作



Content Advisory

溫馨提醒

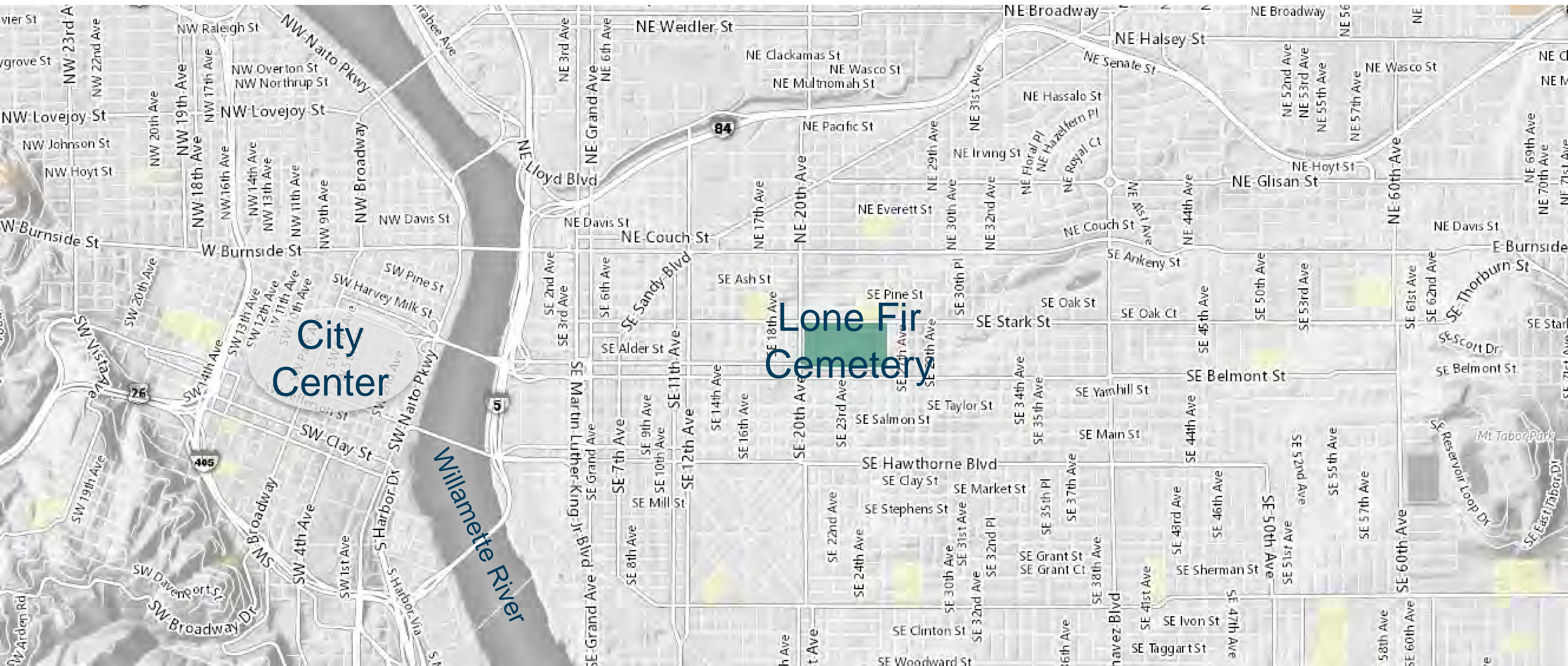
Practice self care
Take a break

自我關懷
休息一下



Lone Fir Cemetery

朗花墓園



Significance

歷史意義



Significance

歷史意義



2008 Design

2008 設計



Goals 目標

contemplate, honor,
acknowledge



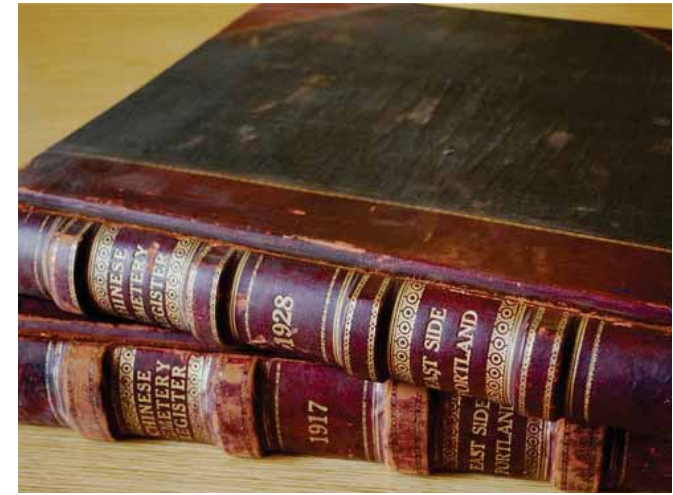
深思、尊重、認同

center those
most impacted



集中關注受影響

respect history and
present needs



尊重歷史

Restart 重新開始

Daylight the history, start
with storytelling

Adapt to present context

Follow state cemetery law

從敘事開始還原歷史
真相

融入現有周邊環境

遵循俄勒岡州墓地相
關法律



Schedule

時程

Spring 2021
2021 春季

Project Set Up
項目設計

Request for
Proposals
徵求提案

Existing
Conditions
現況評估

Interpretive
Development
概念發展

Schematic
Design
概念設計

Summer 2023
2023 夏季

Fall 2023
2023 秋季

Design Engineering
細節及施工圖設計

Construction
Bidding
工程發包

Construction
施工

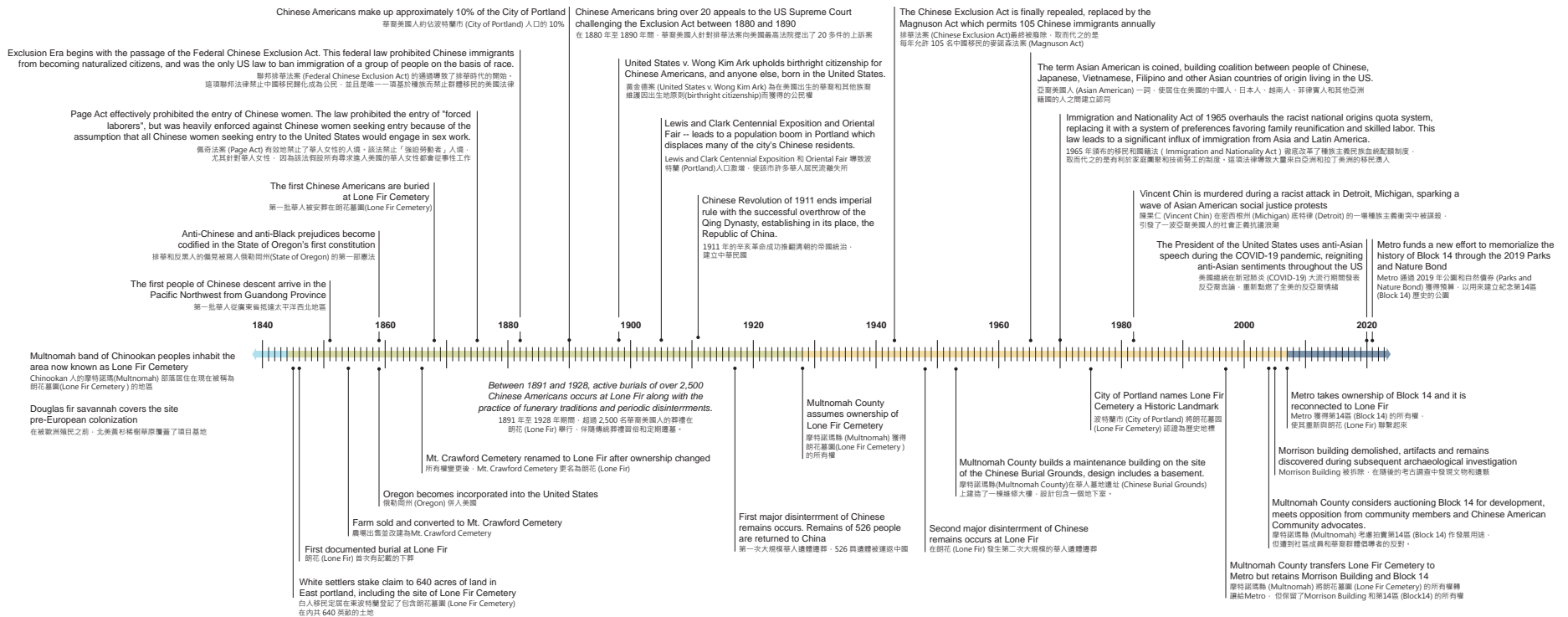
Celebration
完工剪綵

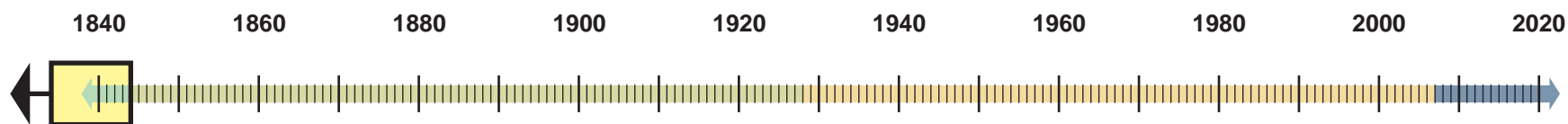
2026

Approval Processing
審核

Historic Timeline

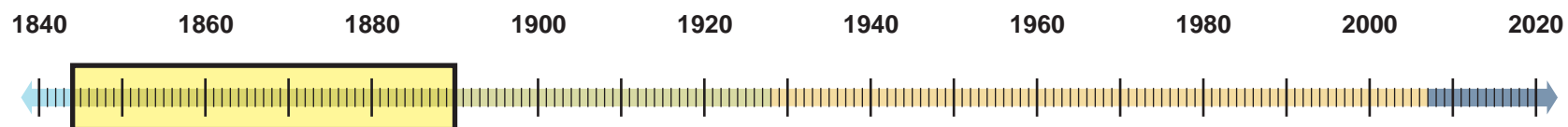
大事年表





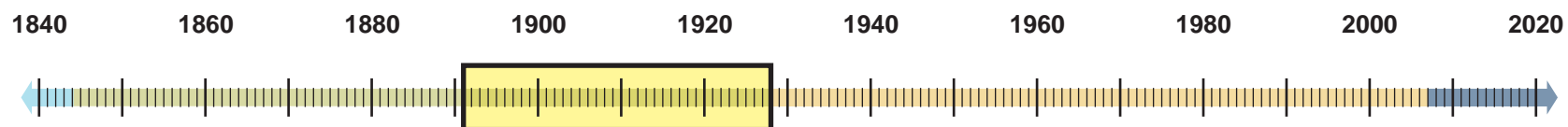
Ancestral Homelands of Multnomah, Wasco, Cowlitz, Kathlamet, Clackamas, Bands of Chinook, Tualatin, Kalapuya, Molalla, and many other tribes
(Time Immemorial - 1843)

Multnomah、Wasco、Cowlitz、Kathlamet、Clackamas、Bands of Chinook、Tualatin、Kalapuya、Molalla 和其他部落的祖先家園
(遠古時代 - 1843)



White Settler Land Claim, Farm and Private Cemetery
(1844- 1890)

殖民時期，白人定居者將基地作為農場和私人墓地
(1844- 1890)



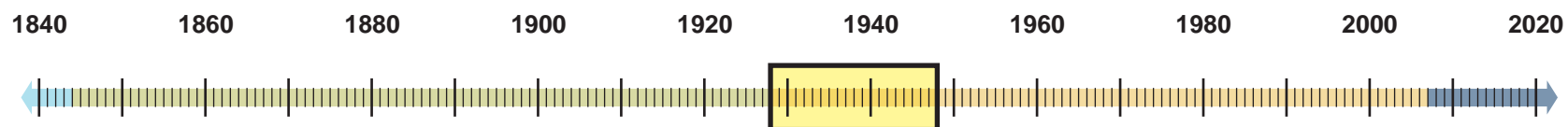
Chinese Burial Grounds
(1891 - 1928)

華人墓地
(1891 - 1928)



Chinese Burial Grounds
(1891 - 1928)

華人墓地
(1891 - 1928)



Chinese Burial Grounds - Multnomah County Ownership
(1928 - 1948)

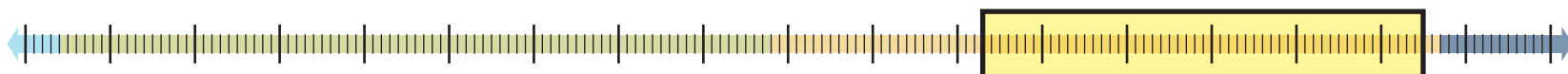
華人墓地 - 摩特諾瑪縣 (Multnomah) 縣所有
(1928 - 1948)



Chinese Burial Grounds - Multnomah County Ownership
(1930)

華人墓地 - 摩特諾瑪縣 (Multnomah) 縣所有
(1928 - 1948)

1840 1860 1880 1900 1920 1940 1960 1980 2000 2020



Morrison Building - Multnomah County Ownership
(1953 - 2005)

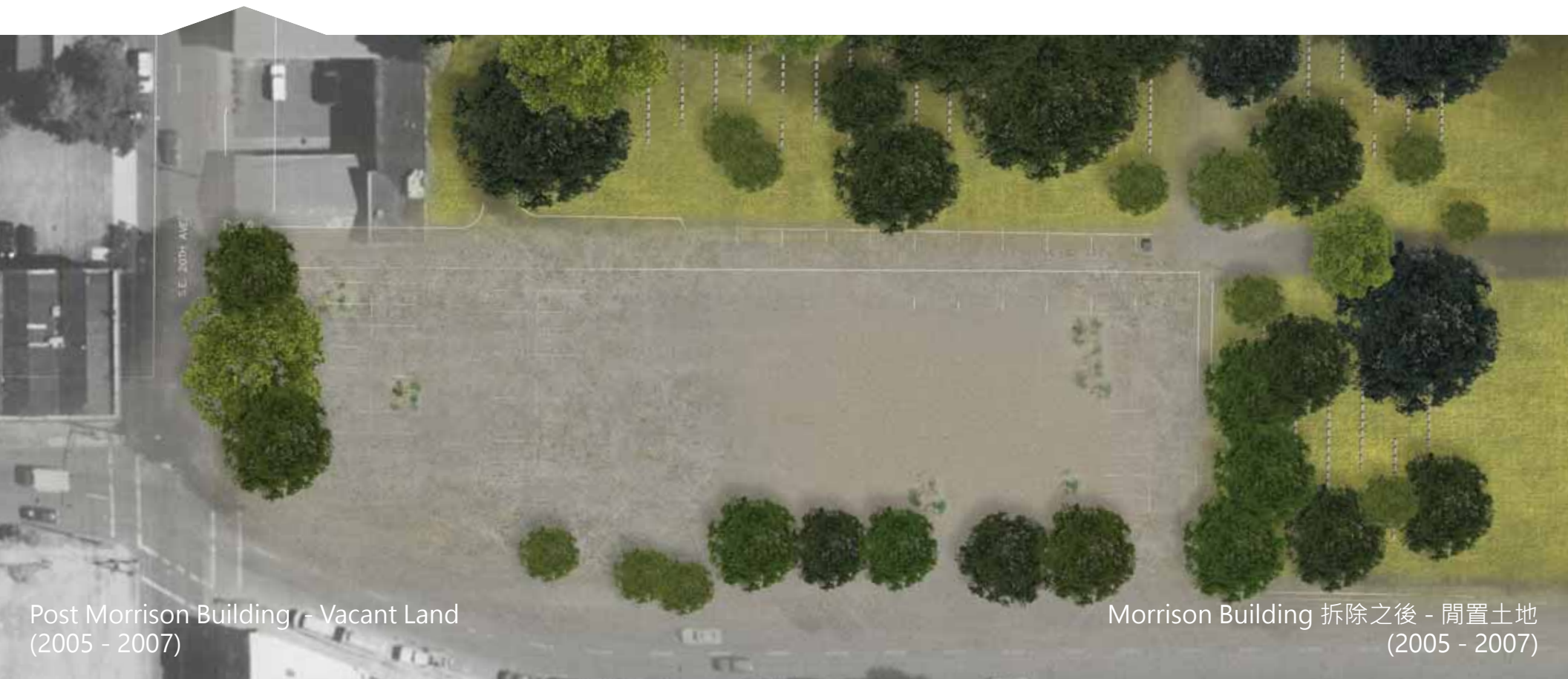
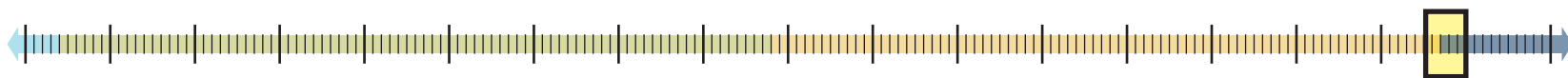
Morrison Building - 摩特諾瑪縣 (Multnomah) 縣所有
(1953 - 2005)



Morrison Building - Multnomah County Ownership
(1953 - 2005)

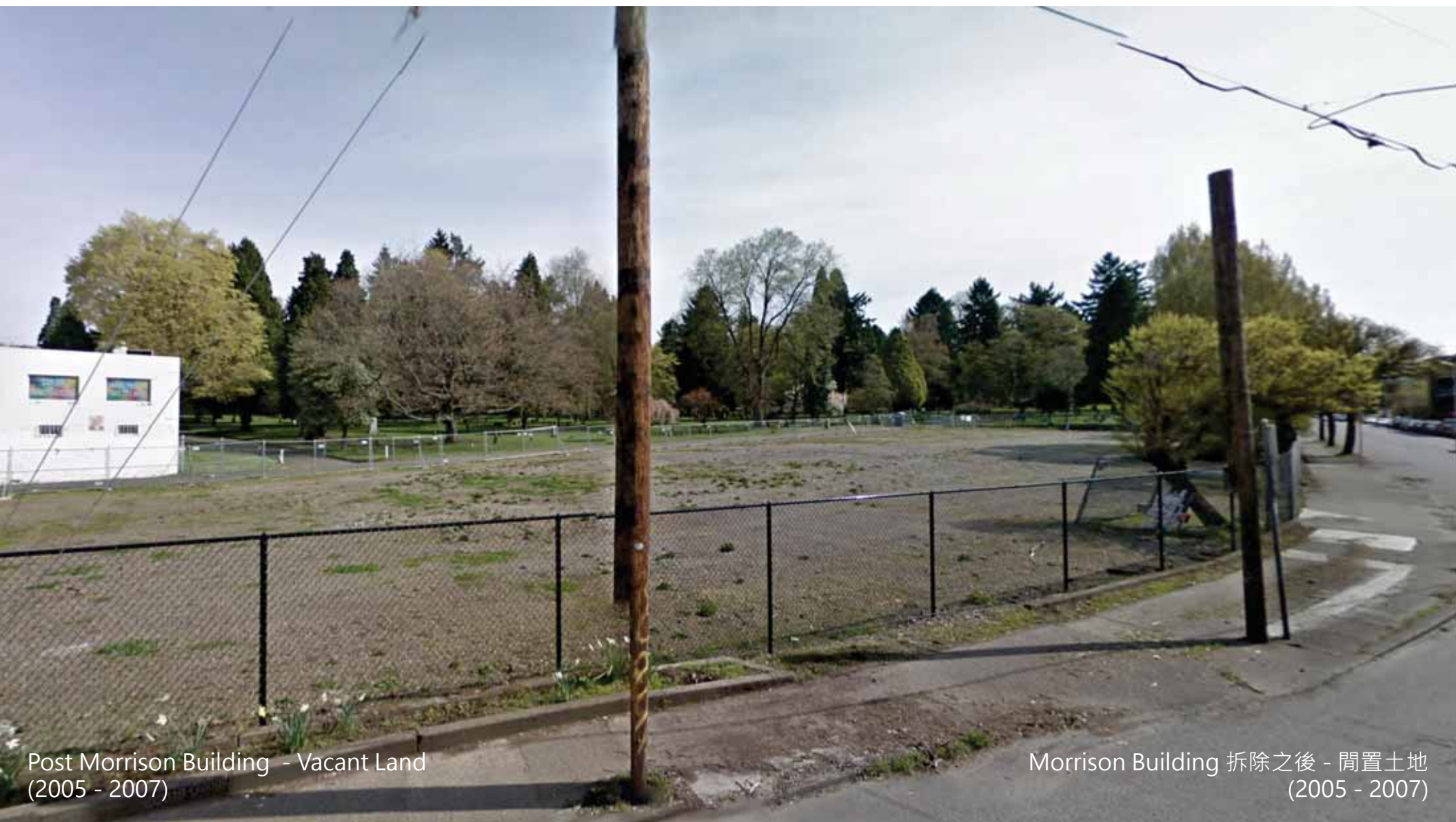
Morrison Building - 摩特諾瑪縣 (Multnomah) 縣所有
(1953 - 2005)

1840 1860 1880 1900 1920 1940 1960 1980 2000 2020



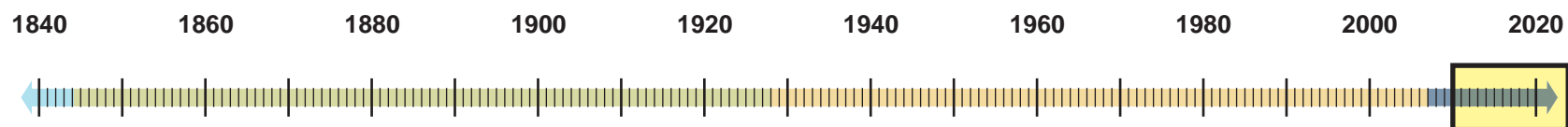
Post Morrison Building - Vacant Land
(2005 - 2007)

Morrison Building 拆除之後 - 閒置土地
(2005 - 2007)



Post Morrison Building - Vacant Land
(2005 - 2007)

Morrison Building 拆除之後 - 閒置土地
(2005 - 2007)



Block 14 - Metro Ownership
(2007 - Present)

第 14 區 - Metro 所有
(2007 - 現在)



Block 14 - Metro Ownership
(2007 - Present)

第 14 區 - Metro 所有
(2007 - 現在)

History: OHI Patients

歷史：俄勒岡精神病院的患者

- 1862: Oregon Hospital for the Insane established
 - 1867 to 1879: Patient burials at Lone Fir Cemetery
 - 1883: Patients moved to Salem
-
- 1862年：俄勒岡精神病院成立
 - 1867至1879年：病患遺體埋葬在朗花墓園
 - 1883年：病患遷移至塞勒姆 (Salem)

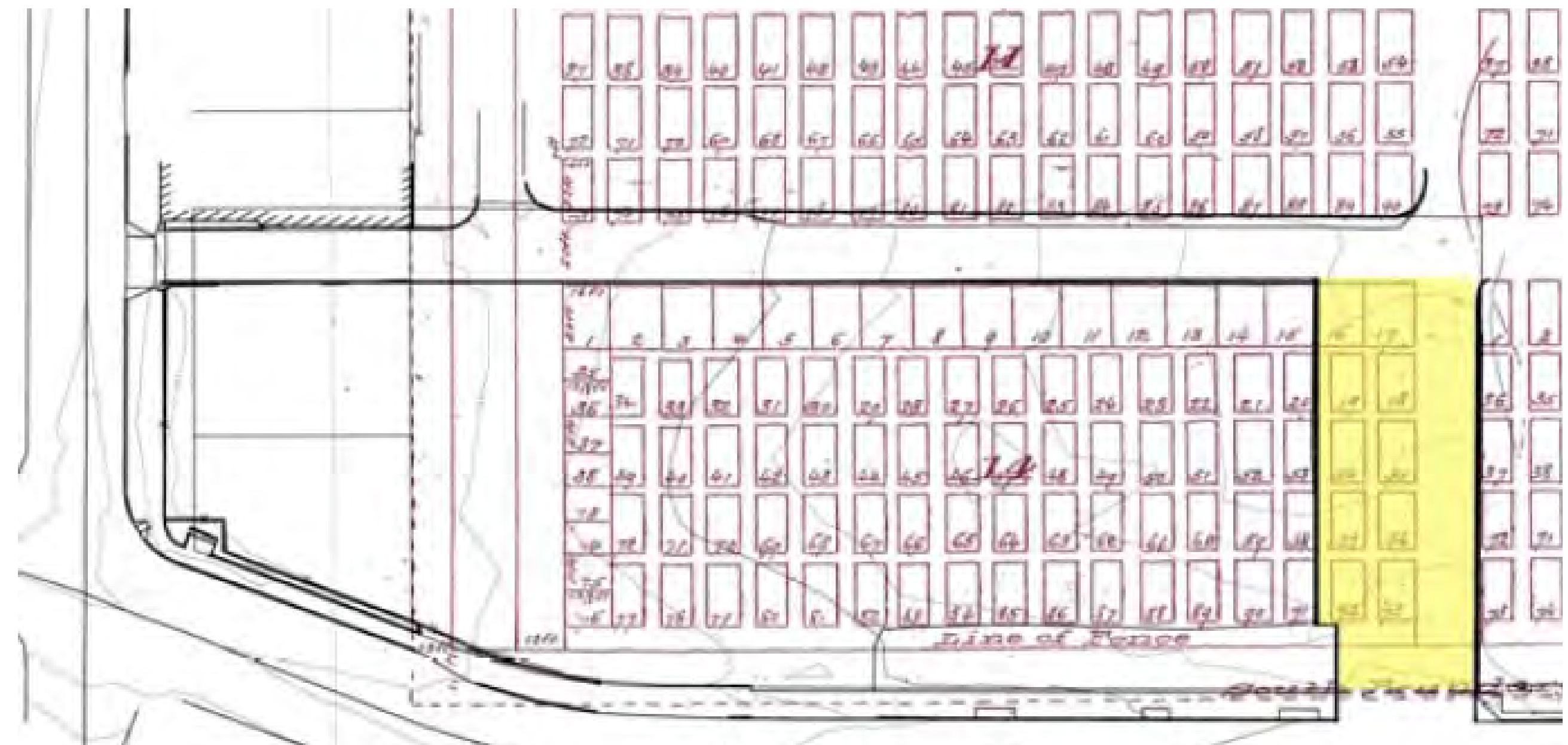


History: OHI Patients

歷史：俄勒岡精神病院的患者

- 1887: News article refers to patients being buried east of the Chinese section
- 1889: Hospital burned to the ground

- 1887年：新聞報導指出病患遺體埋葬於華人墓地的東邊
- 1889年：俄勒岡精神病院於大火中付之一炬



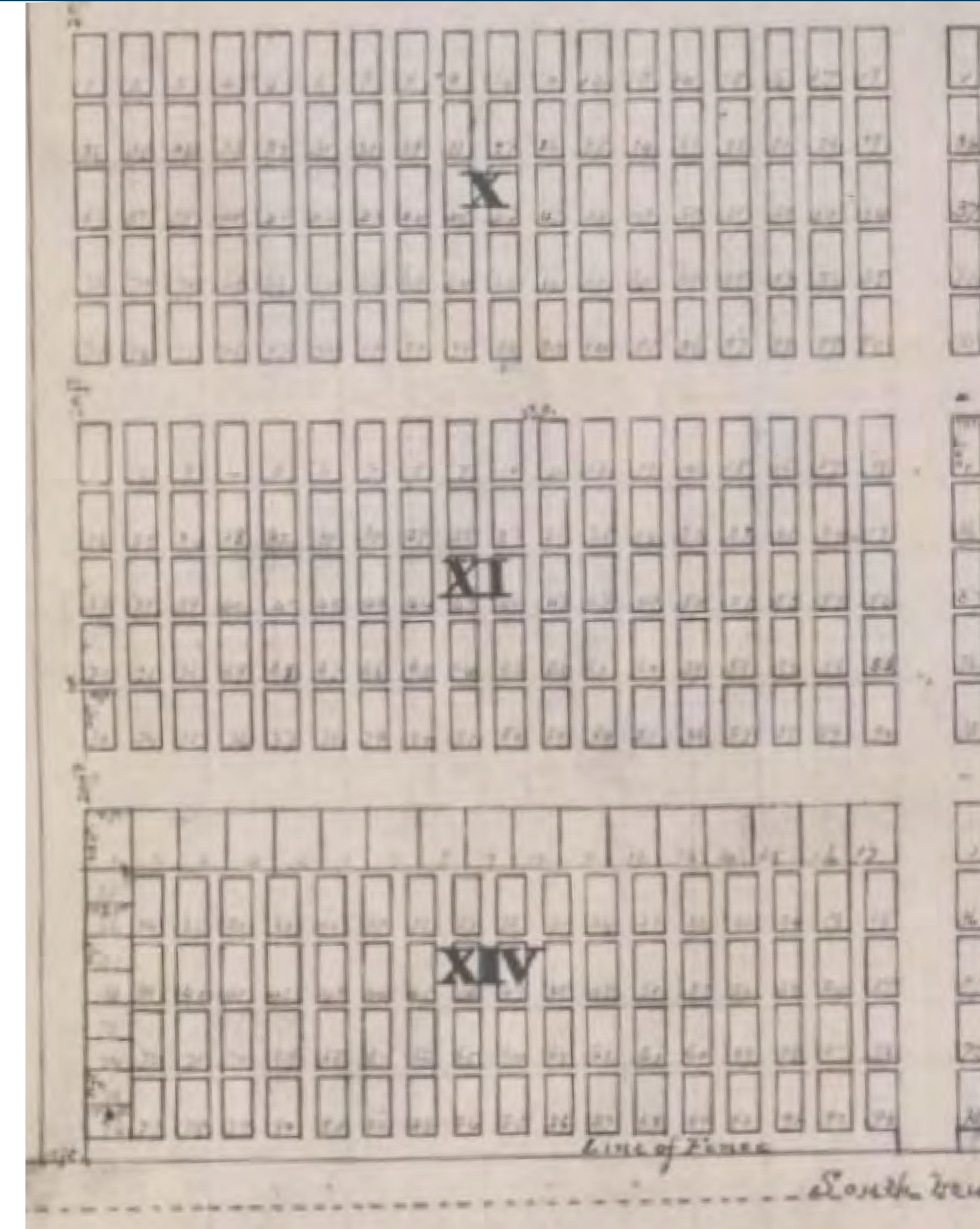
Yellow highlight indicates area previously thought to contain OHI burials

圖中黃色標記部分為先前人們所認知的俄勒岡精神病院病患遺體埋葬區域

History: OHI Patients

歷史：俄勒岡精神病院的患者

- 2021: Researchers hired to better understand who was buried at Block 14
 - Records found for 185 patients
 - Block 10 referenced as “asylum burial ground,” with 54 documented patient burials
 - “Highly improbable” any patients were buried at Block 14
- 2021年：研究人員受雇調查哪些人被埋葬在第14區
 - 紀錄顯示共有185位逝世的病患
 - 第10區被視為“精神病院墓地”，紀錄顯示共有54位病患埋葬於此
 - 有病患埋葬在第14區的可能性非常的低



History: OHI Patients

歷史：俄勒岡精神病院的患者

- Diagnoses included

- Dementia
- Epilepsy
- Melancholia
- Mania
- Alcohol or opium addiction

- Also institutionalized for developmental disabilities: physical, learning, language, or behavior impairments

- 病患的診斷包含

- 失智症
- 癲癇
- 憂鬱症
- 躁鬱症
- 酒精或鴉片成癮

- 病患也包含發展障礙患者：如肢體障礙，學習障礙，語言障礙，或是行為障礙



History: OHI Patients

歷史：俄勒岡精神病院的患者

Approximate OHI patient burials:

粗估俄勒岡精神病院的患者埋葬人數：

- Block 10: 54
- Block 11: 4
- Block 18: 1
- Block 21: 1

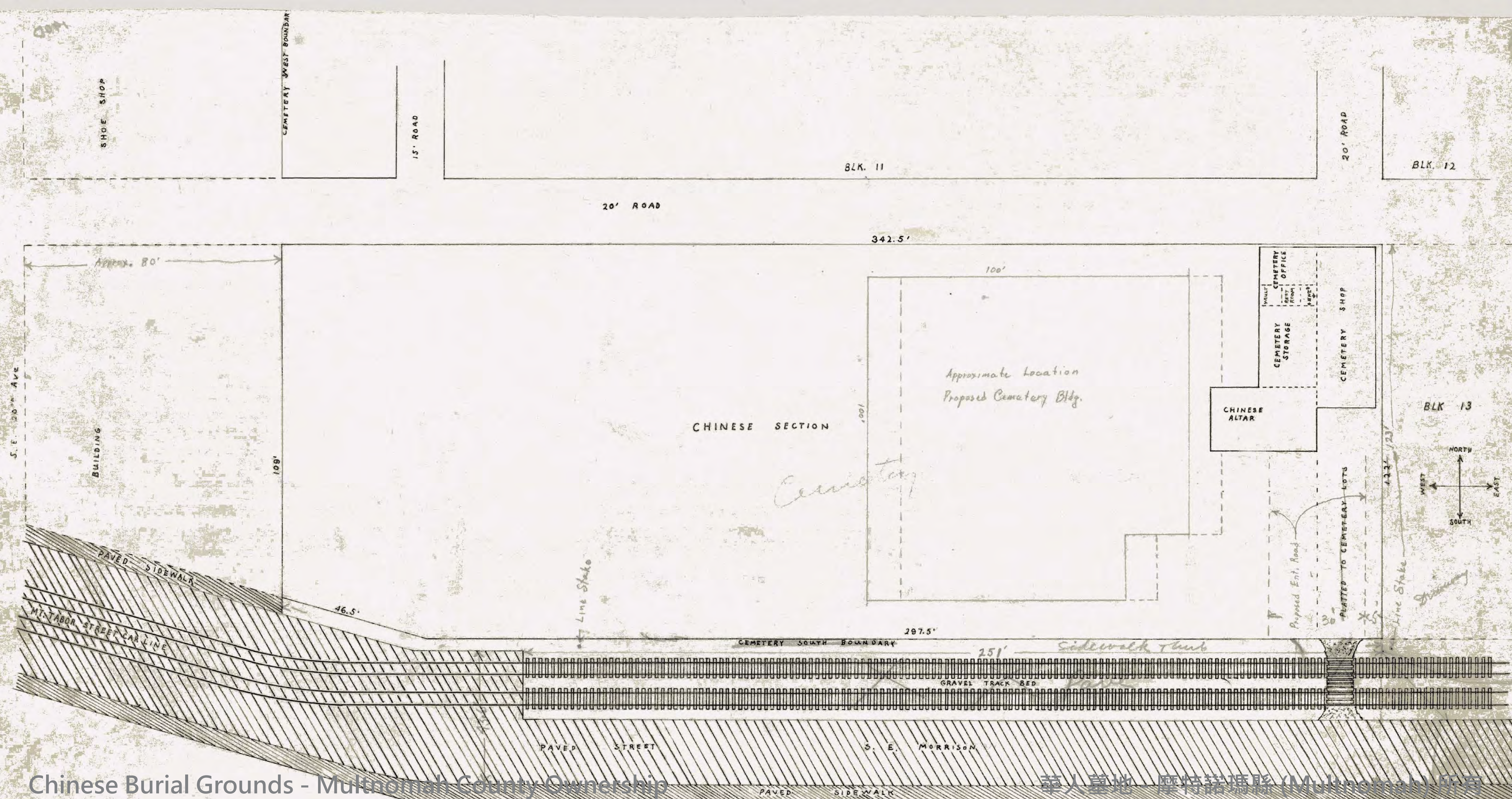
Block 14: Chinese Burial Grounds(1891 - 1928)

第14區華人墓地 (1891-1928):

Approximate Chinese burials:
粗估第14區華人墓地埋葬人數：

2,500





Chinese Burial Grounds - Multnomah County Ownership
(1928-1948)

華人墓地—摩特諾瑪縣 (Multnomah) 所有
(1928-1948)

Breakout Session #1

分組會議 #1

Small Group Discussions (15 mins)

Space for processing / sharing / conversation

Potential questions for processing:

- What part of this history did you know? What was new for you?
- What feelings or reactions does this history bring up for you?
- Do you have any questions for the project team?

小組討論 (15分鐘)

處理、分享、交流情緒的空間

參考問題：

- 您知道這段歷史的哪一部分？對您而言哪一部分是新的？
- 這段歷史帶給您什麼感受？
- 您對項目團隊是否有任何問題？



BREAK (10 mins)

休息(10 分鐘)

Breakout Session #2

分組會議 #2

Small Group Discussions (30 mins)

- Are there specific things you'd like our team to consider as we begin the process of design?
- What can we do to help facilitate healing in the design of the future memorial?

小組討論 (30分鐘)

- 隨著我們設計過程的開始，您希望我們將哪些具體事項納入考量？
- 在未來紀念花園的設計中，我們可以做些什麼來幫助療癒的過程？

Elder/Youth Specific Topics

長者/年輕人專題

- Elders, what do you hope the youth will gain from this memorial garden?
- Youth, what do you imagine this garden will mean for the elders?
- What will help make this memorial relevant for future generations?
- Optional:
Are there specific spiritual practices that you feel we should consider as we approach design?
- 長者們，您希望年輕人們從這個紀念花園中獲得什麼？
- 年輕人們，您覺得這個花園對長者們的重要性是什麼？
- 您認為什麼樣的設計能夠使項目成果對未來的世代產生意義？
- 選答：
在我們進行設計時，您認為我們應該考慮哪些特定的習俗？

Social Justice Specific Topics

社會正義專題

- How can this project help to acknowledge these historic injustices?
- Optional:
Are there specific spiritual practices that you feel we should consider as we approach design?
- 這個項目如何幫助人們認知到不公正的歷史事件?
- 選答:
在我們進行設計時，您認為我們應該考慮哪些特定的習俗?

Religious Community Specific Topics

宗教群體專題

- Are there specific spiritual practices that you feel we should consider as we approach design?
- 在我們進行設計時，您認為我們應該考慮哪些特定的習俗？

Next Steps

後續工作

Burial ledger study
Agency consultation
Design alternatives

調研下葬紀錄
諮詢相關市政單位
設計備選方案





Arts and events
Garbage and recycling
Land and transportation
Oregon Zoo
Parks and nature

oregonmetro.gov