

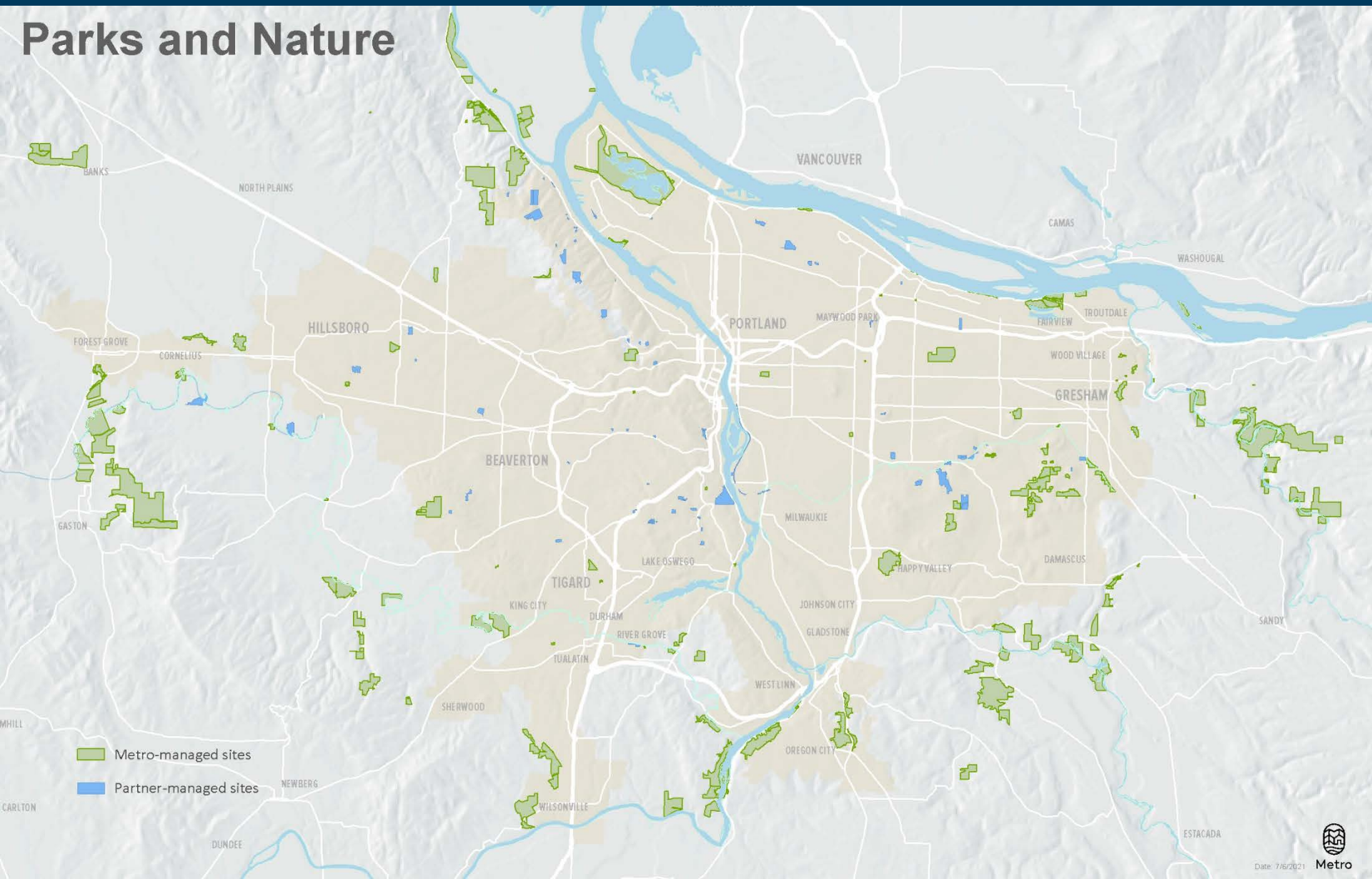


Metro

2019 Parks and Nature Bond Protect and Restore Land refinement

25 years of regional investment

Parks and Nature

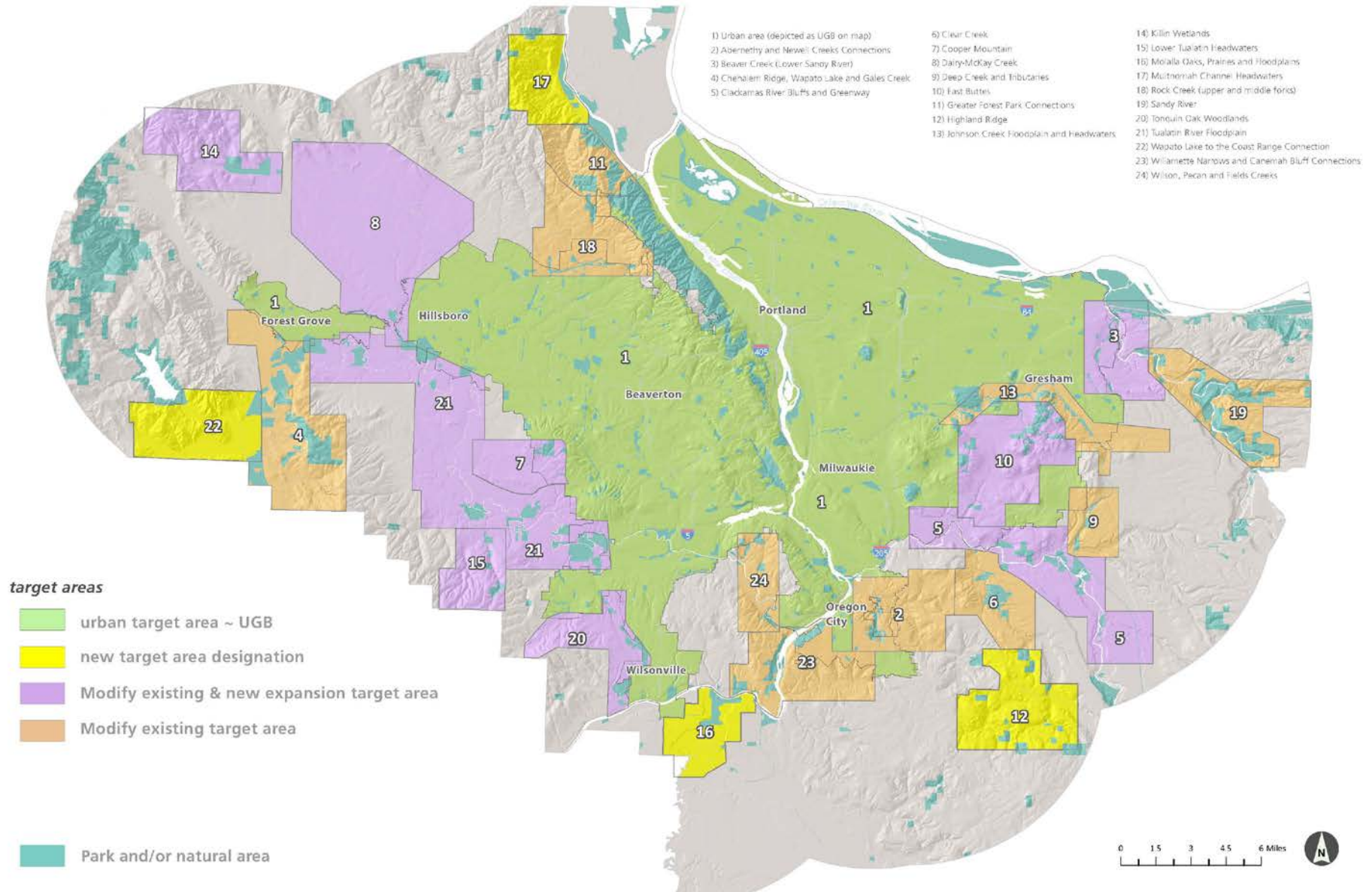


Protect and Restore Land

Metro will protect and connect greater Portland's special places by using bond funds to purchase land from willing sellers and restore it



Twenty four target areas span our region



Community input created the bond criteria

- **Water**
 - Improve quality, flood reduction
 - Headwaters, floodplains, wetlands, riparian areas
- **Connecting fish and wildlife habitat**
 - Necessary at multiple scales
- **Rare habitats and culturally significant plants**
 - Oak and prairie
- **Fish**
 - Salmon, steelhead, lamprey, trout
- **Regional approach**
 - Oregon Conservation Strategy
 - Regional Conservation Strategy



What have we done so far?

- Planned for Tribal government engagement
- Collaborated with Indigenous community members
- Developed Target Area Ecological Assessment framework
- Completed Target Area Ecological Assessments for all 24 target areas
- Held discussion sessions for partners to share more specific information



Data in the ecological assessments

- **Equity Focal Areas:** census tracts with above average population of historically marginalized communities.
- **Land cover:** Historic and current veg., oaks, floodplain, wetlands, altered streams
- **Water quality:** fish and aquatic life, fishing, water supply, water contact recreation
- **Toxics:** superfund, brownfields, LUST
- **Fish:** Salmon, steelhead, trout and lamprey distribution; ODFW barriers and select barrier assessment
- **Connectivity:** regional melding of 8 species and TA maps in 3 habitat specific groups
- **Fragmentation:** tax lot size
- **Regional habitat prioritization:** Federal Will. Valley Cons. Study, , OR Cons. Strategy and Willamette Synth., Regional Conservation Strategy High-Value Habitat

Indigenous community member collaboration

Already included

- Culturally significant plants
- Salmon and Lamprey habitat
- Flooding
- Habitat connectivity & wildlife needs

New or enhanced

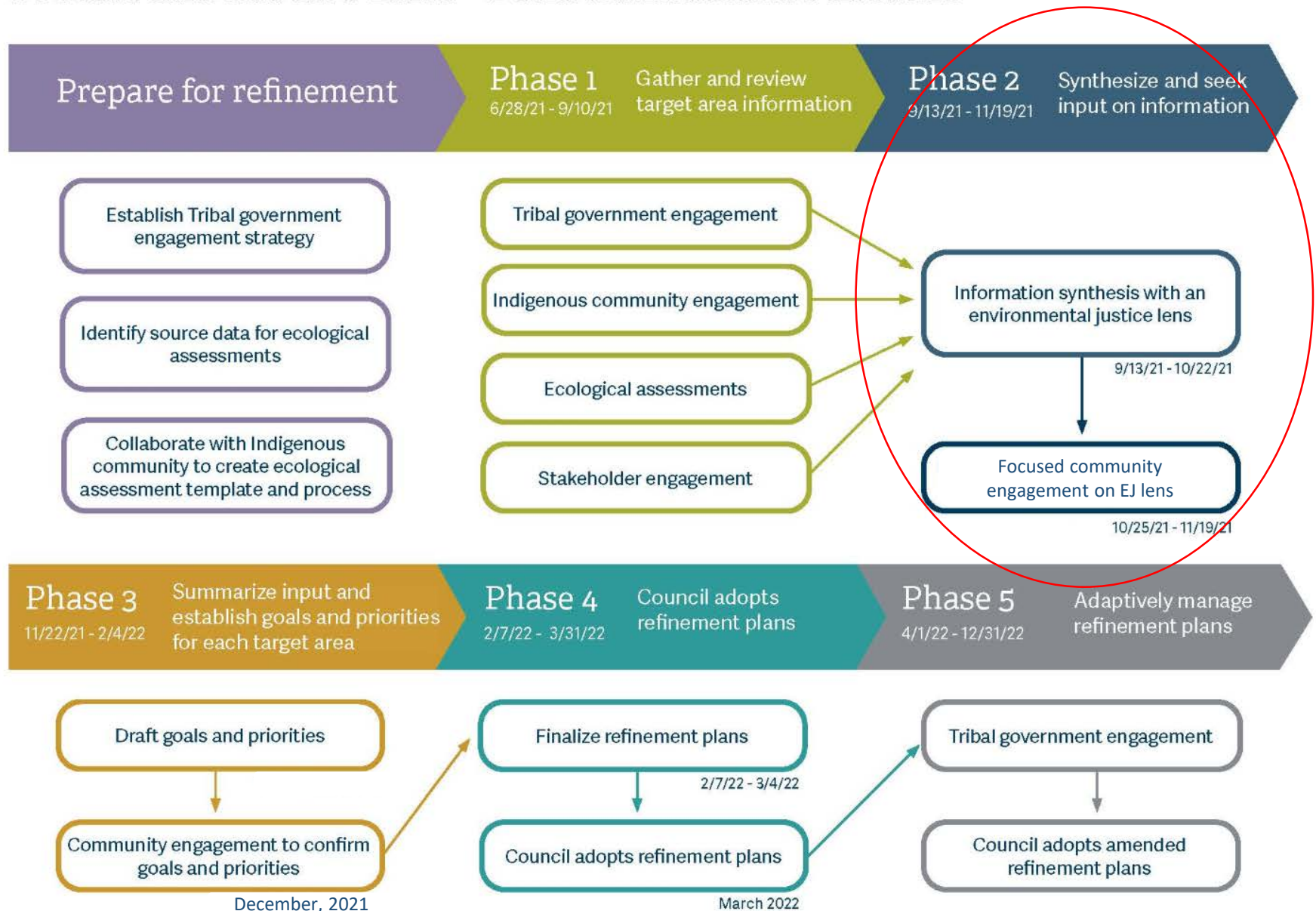
- People are a part of the landscape
- Stream daylighting/inline pond removal
- Community member direct participation
- Pollution/toxins/water quality data
- Language matters



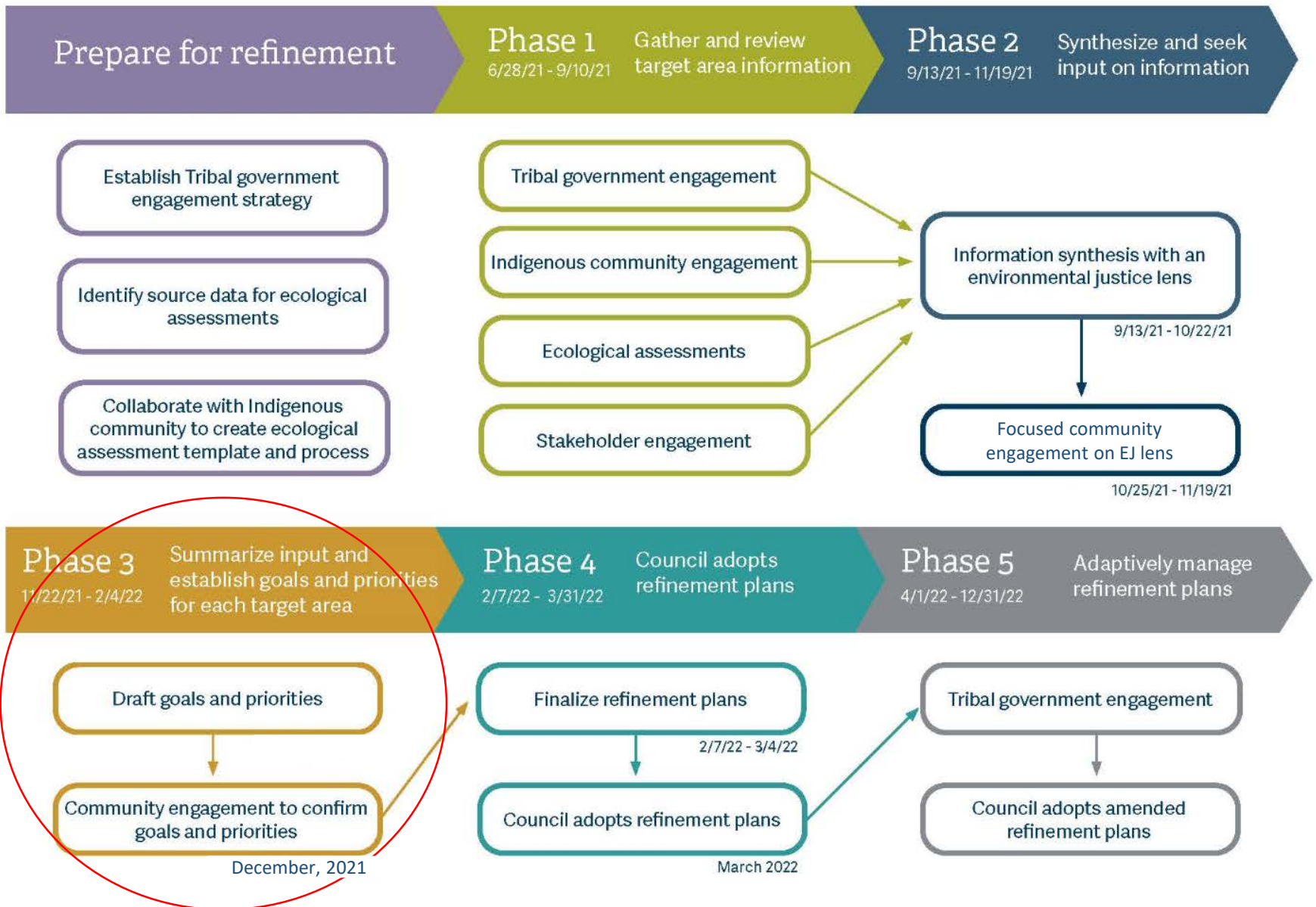
What comes next?

- Continue to collaborate with Indigenous community members
- Develop agreements with Tribes to share expertise
- Synthesize what we've learned about each target area
 - Analysis to connect bond criteria to ecological opportunities
 - Develop and apply an environmental justice lens
 - Develop draft approaches to accomplishing bond goals based on what we've learned
- Public engagement to share strategies and seek feedback
- Report back to Metro Council

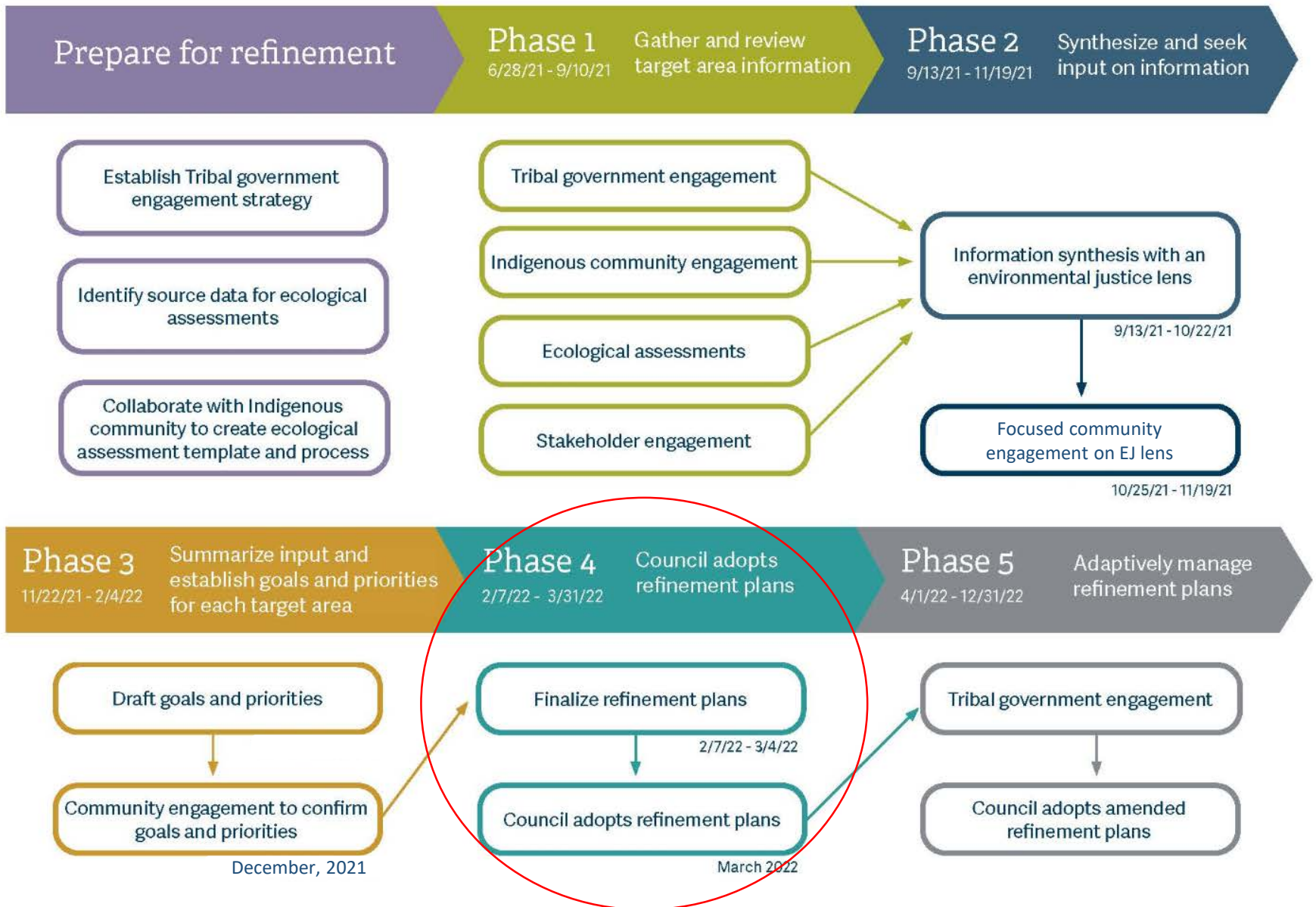
Protect and Restore Land - Bond Refinement Schedule



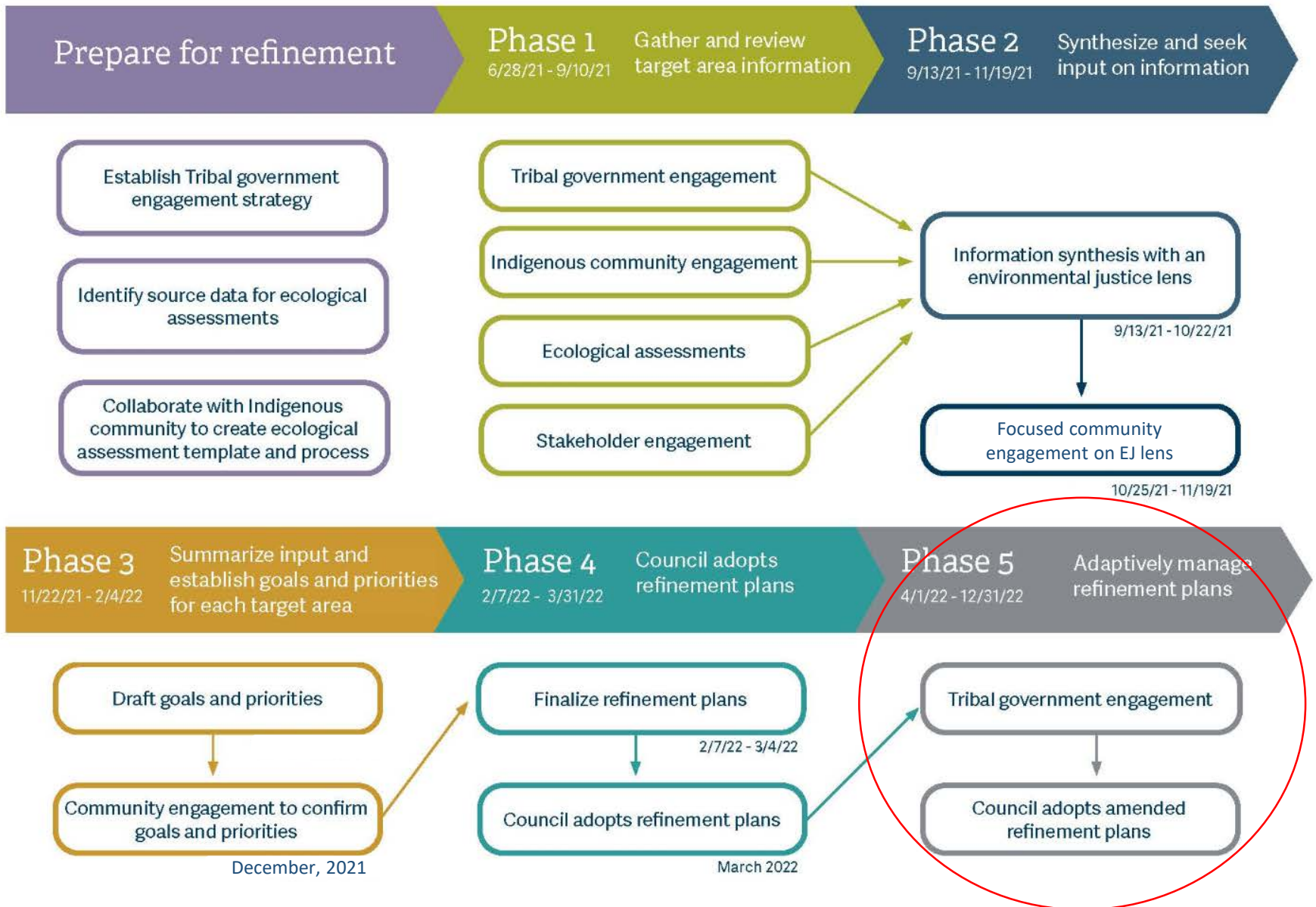
Protect and Restore Land - Bond Refinement Schedule



Protect and Restore Land - Bond Refinement Schedule



Protect and Restore Land - Bond Refinement Schedule





Metro

For more information

Visit the bond website:

www.oregonmetro.gov/parksandnaturebond

Visit the Protect and Restore Land website:

www.oregonmetro.gov/conservation

Email me: Shannon.Leary@oregonmetro.gov