



Traffic deaths and serious injuries, 2019

Greater Portland area

In 2018, the region adopted a target to reach zero traffic deaths and serious injuries by 2035. Each year, Metro reports on progress towards the targets. The greater Portland region has one of the lowest traffic fatality rates of any large metropolitan area, but not even one traffic death is acceptable. Regional partners are working together to eliminate traffic deaths and serious injuries on our streets.

95 people were killed in motor vehicle traffic crashes on roadways in the greater Portland region in 2019, while 545 suffered life changing injuries.

Pedestrians killed in traffic crashes made up 38% of all traffic fatalities in 2019. The number of people killed while walking, bicycling or riding in a motor vehicle increased from 2018 to 2019.

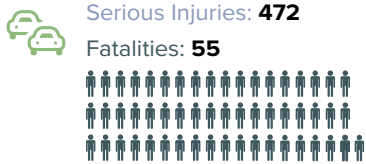
People walking:



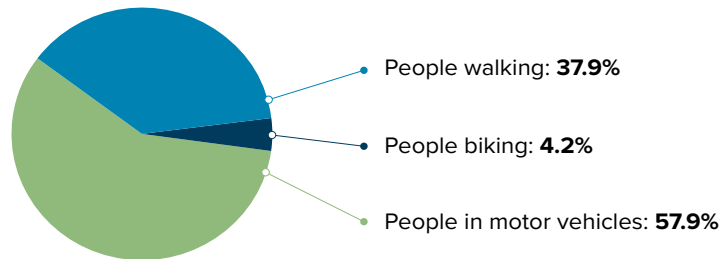
People biking:



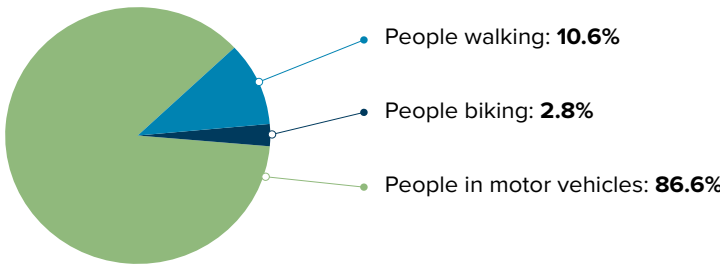
People in motor vehicles:



2019 Fatalities



2019 Serious injuries



Traffic deaths and serious injuries 2015-2019

	Pedestrians		Cyclists		Motorists		Totals	
	Serious injuries	Fatalities	Serious injuries	Fatalities	Serious injuries	Fatalities	Serious injuries	Fatalities
2015	56	26	33	2	431	38	520	66
2016	91	33	26	7	476	41	593	81
2017	67	38	25	4	434	44	526	86
2018	51	35	27	3	419	49	497	87
2019	58	36	15	4	472	55	545	95

Fatality is defined as a death that occurs as a result of a motor vehicle crash, either at the scene or within 30 days as a result of the crash.

Serious injury (also referred to as Injury A, severe injury or incapacitating injury) is defined as an injury from a motor vehicle crash that prevents the injured person from normally continuing the activities they were capable of performing before the crash. Examples include severed or broken limbs, skull or chest injuries, abdominal injuries, unconscious at or when taken from the crash scene, unable to leave the crash scene without assistance.

Greater Portland encompasses the land within the Metropolitan Planning Area Boundary

Common factors in fatal and serious injury crashes

Consistent with previous years, speed and impairment were two of the leading factors in fatal and serious injury crashes in 2019. There are typically several factors that contribute to the severity of crashes, including roadway design and vehicle size.

🍷 Alcohol & other drugs

67% of **fatalities** resulted from crashes in which alcohol, marijuana, or other drugs were determined to be a contributing factor.

15% of **serious injuries** resulted from crashes in which alcohol, marijuana, or other drugs were determined to be a contributing factor.

🚗 Speed

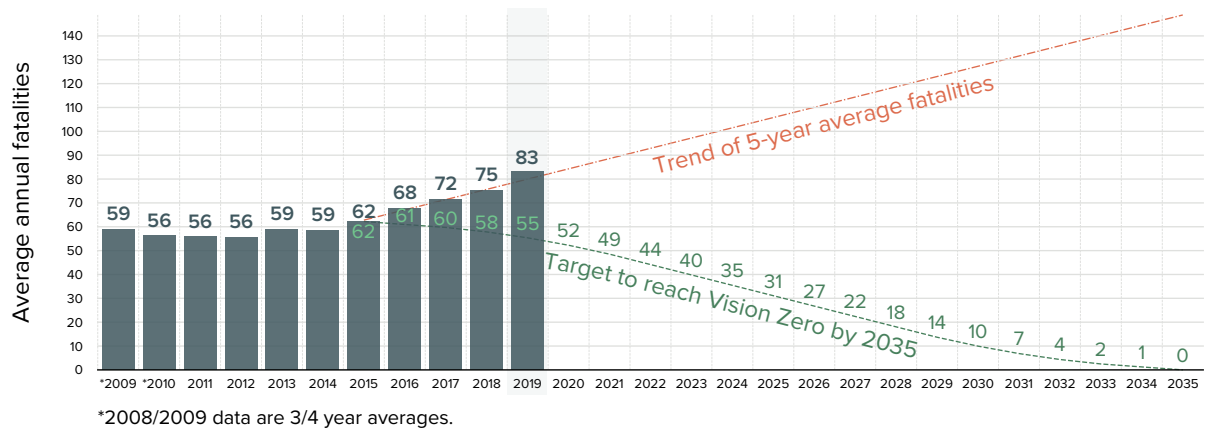
28% of **fatalities** resulted from crashes in which speed was determined to be a contributing factor.

17% of **serious injuries** resulted from crashes in which speed was determined to be a contributing factor.

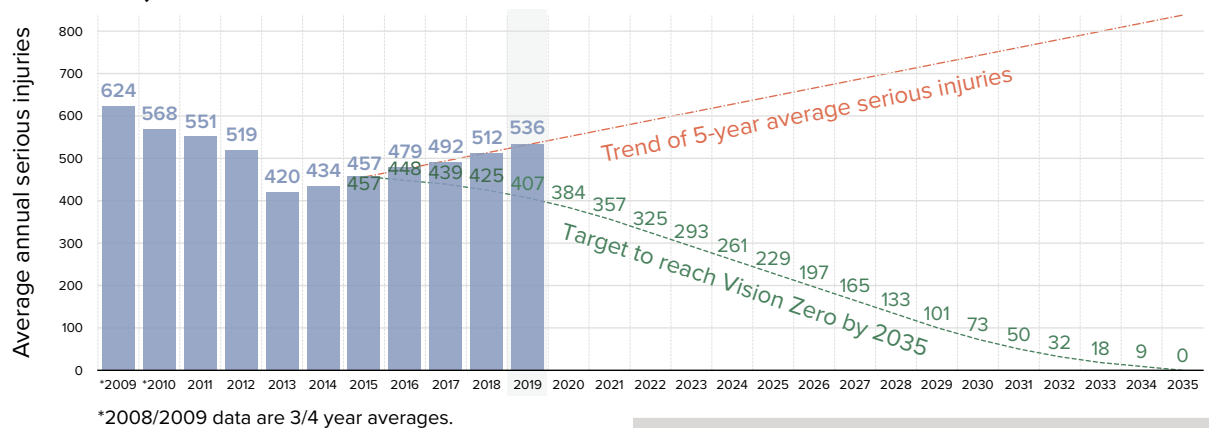
Performance towards Vision Zero targets

To track progress towards our Vision Zero targets, a rolling 5-year average of crash data (from 2015 to 2019) is used to better understand crash trends. The 5-year average is used to smooth out the random nature of crashes and see trends. Based on current trends, we are not on track to get to Vision Zero.

Fatalities



Serious injuries



Questions?

Lake McTighe, Senior Regional Planner
Lake.McTighe@oregonmetro.gov