



# **Appendix B: Trails Evaluation Results**

Appendix to the Metro Parks and Nature Americans  
with Disabilities Act Transition Plan

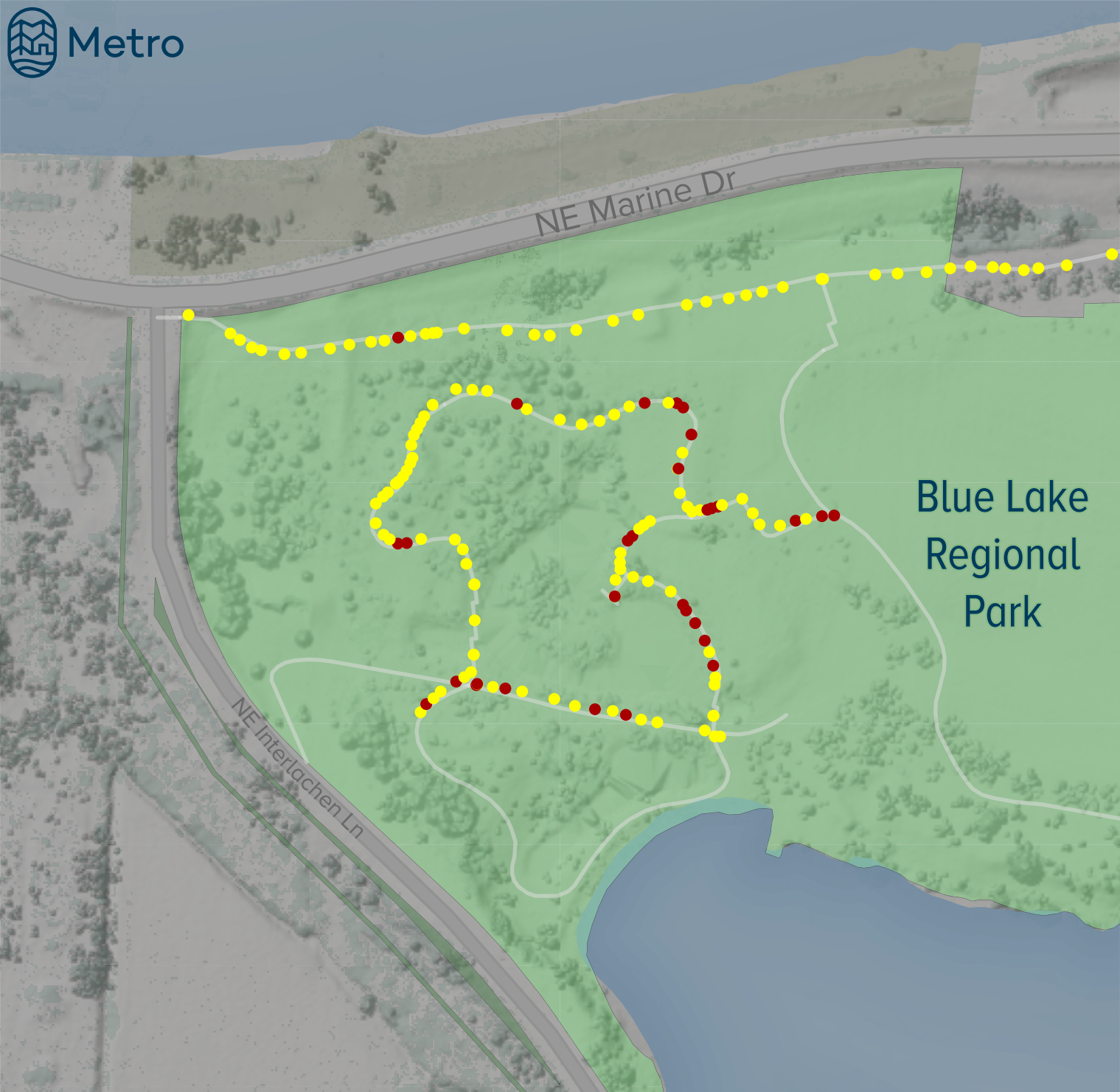
Issued July 2019

**[oregonmetro.gov](http://oregonmetro.gov)**

Metro  
600 NE Grand Ave.  
Portland, OR 97232-2736  
503-797-1700

# Blue Lake Regional Park

## Trail Cross Slopes



Blue Lake  
Regional  
Park



### Cross Slope

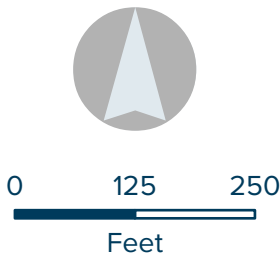
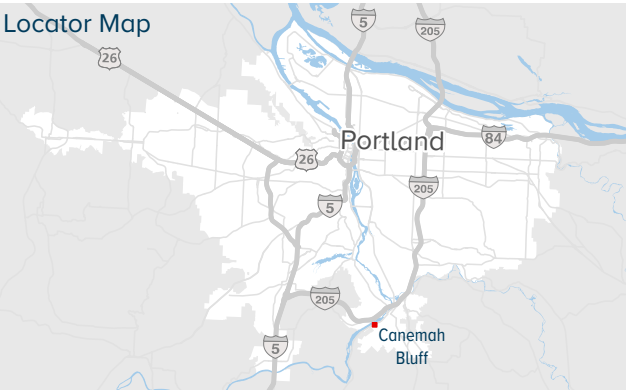
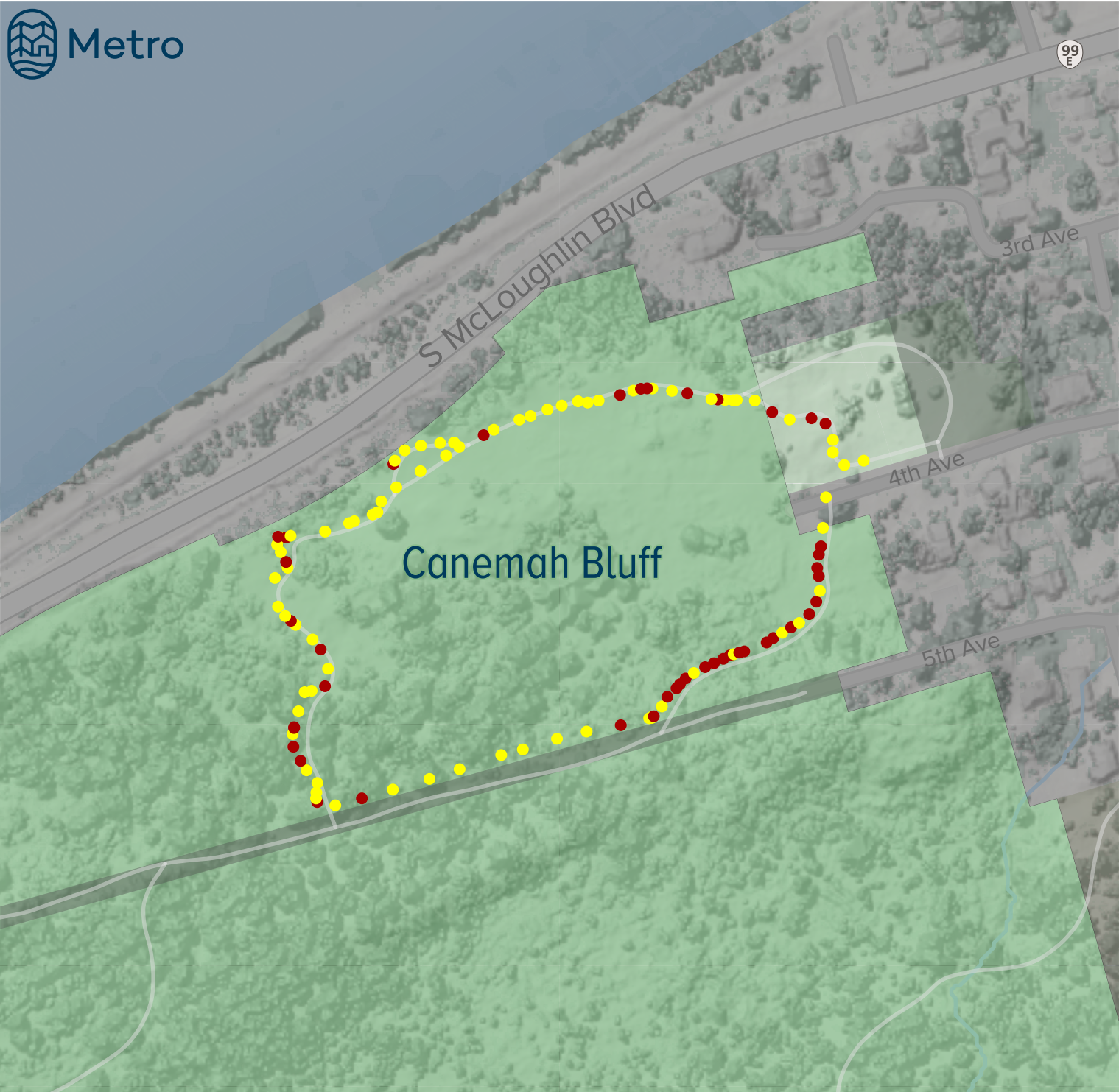
- ≤2.08%
- >2.08%

Trail assessments performed in Summer 2017  
by WT Group to support Metro Parks and  
Nature Access Audit and Transition Plan.



# Canemah Bluff

## Trail Cross Slopes



### Cross Slope

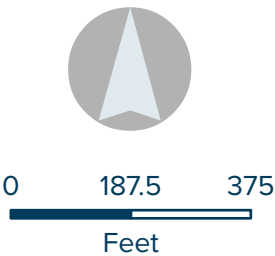
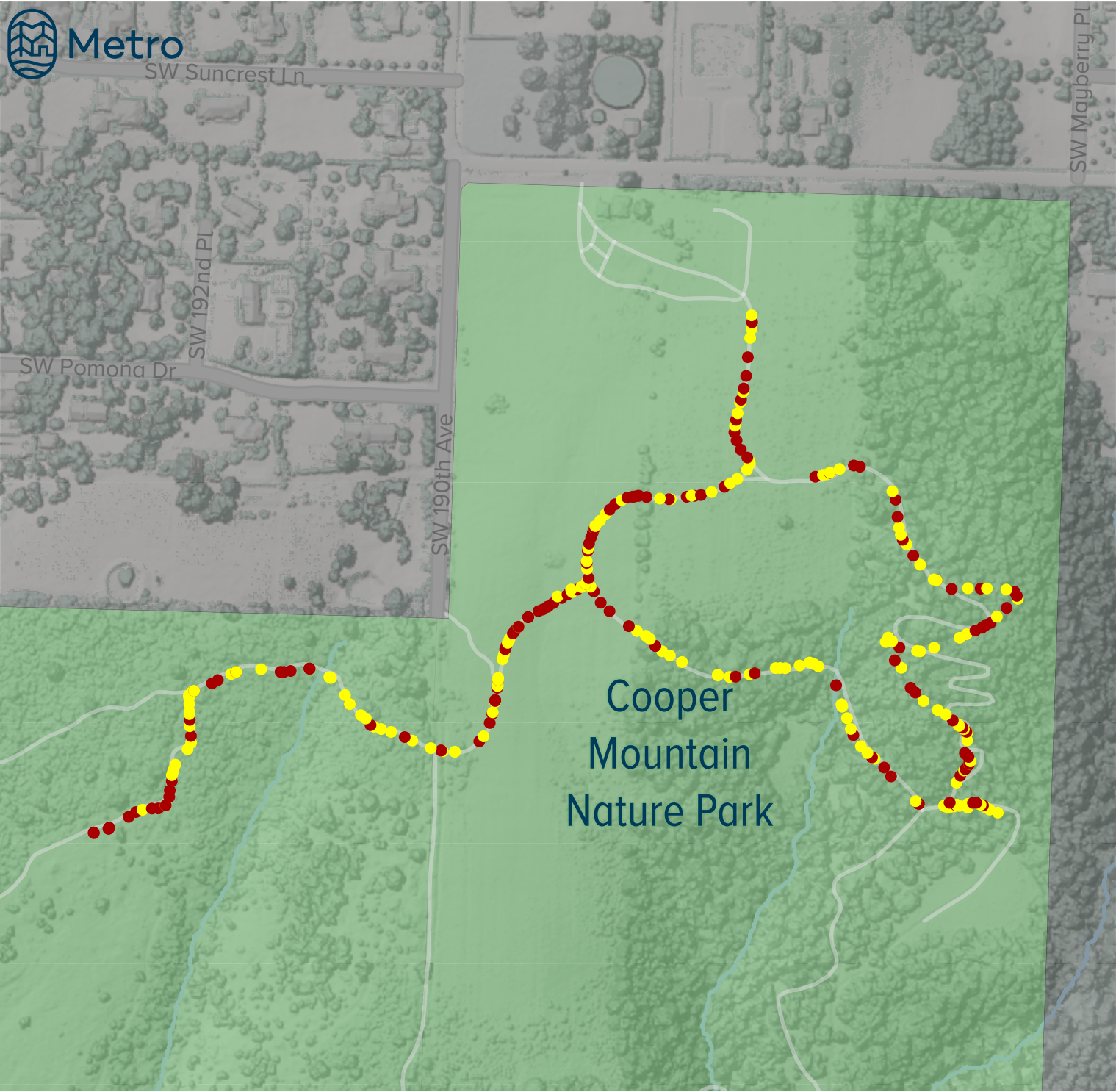
- $\leq 2.08\%$
- $> 2.08\%$

Trail assessments performed in Summer 2017 by WT Group to support Metro Parks and Nature Access Audit and Transition Plan.



# Cooper Mountain Nature Park

## Trail Cross Slopes



- Cross Slope
- $\leq 2.08\%$
  - $> 2.08\%$

Trail assessments performed in Summer 2017 by WT Group to support Metro Parks and Nature Access Audit and Transition Plan.



# Glendoveer Golf Course

## Trail Cross Slopes



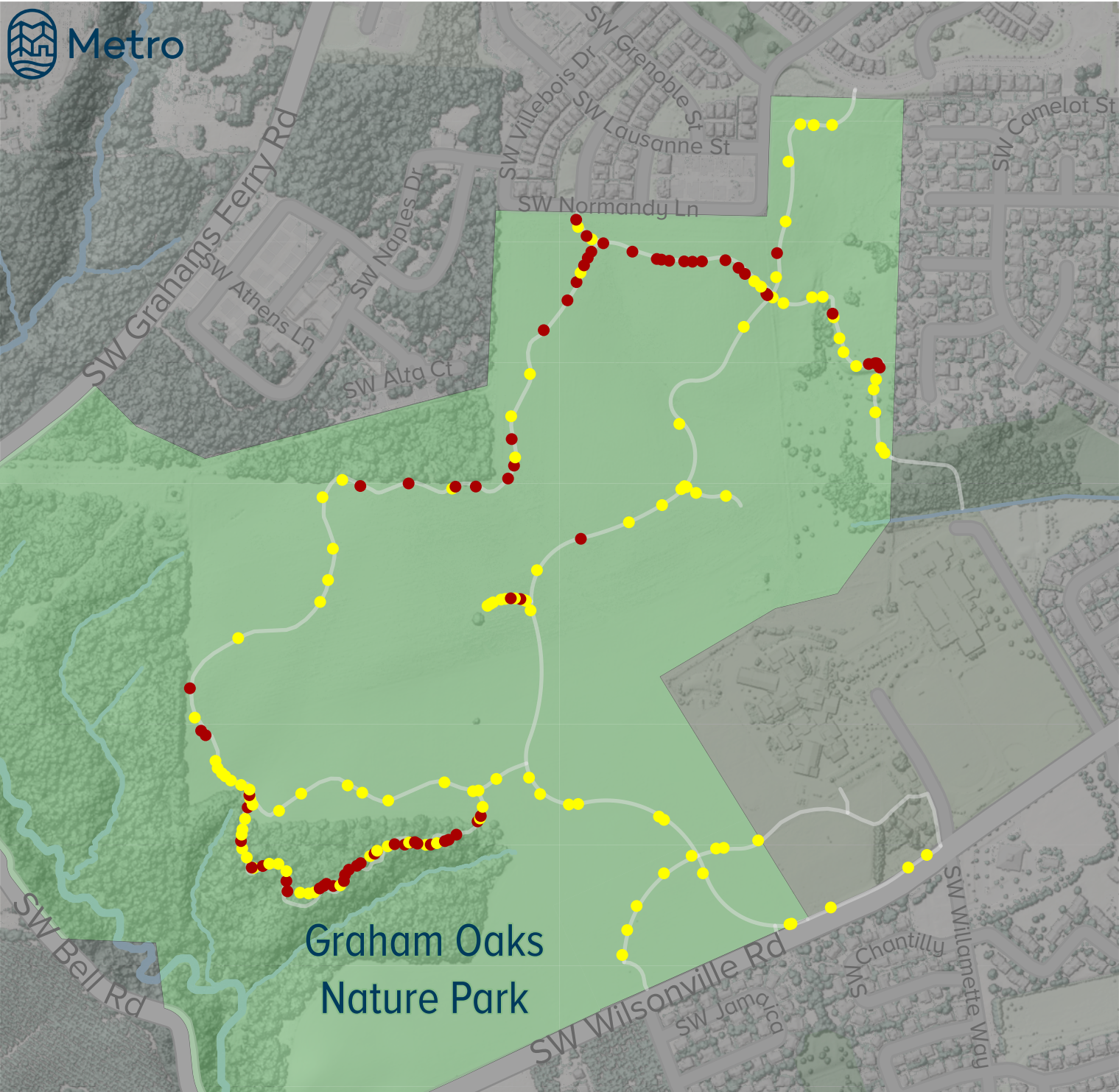
- Cross Slope
- $\leq 2.08\%$
  - $> 2.08\%$

Trail assessments performed in Summer 2017 by WT Group to support Metro Parks and Nature Access Audit and Transition Plan.



# Graham Oaks Nature Park

## Trail Cross Slopes



### Cross Slope

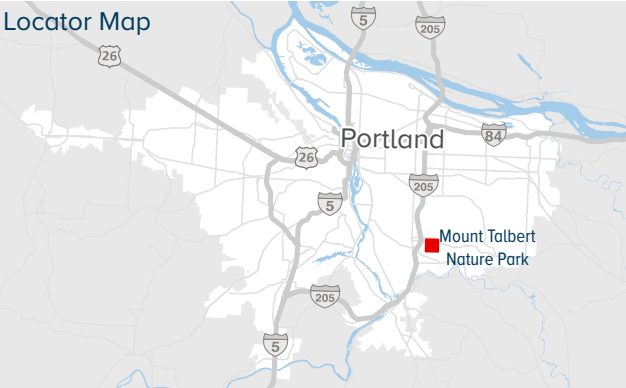
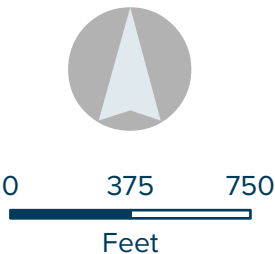
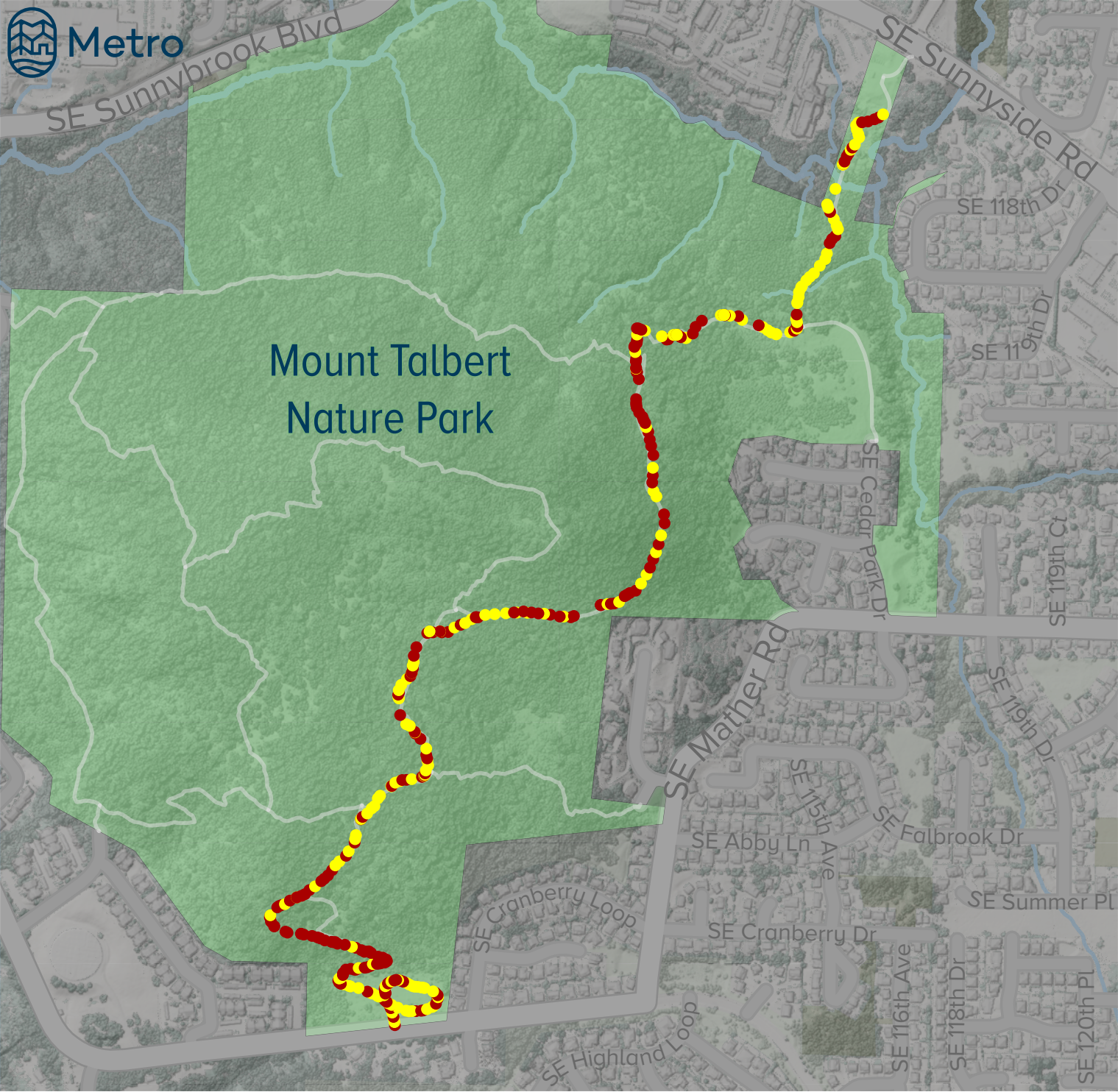
- $\leq 2.08\%$
- $> 2.08\%$

Trail assessments performed in Summer 2017 by WT Group to support Metro Parks and Nature Access Audit and Transition Plan.



# Mount Talbert Nature Park

## Trail Cross Slopes



### Cross Slope

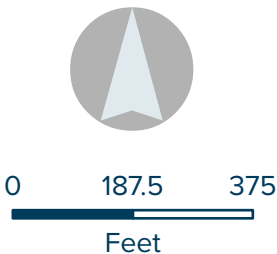
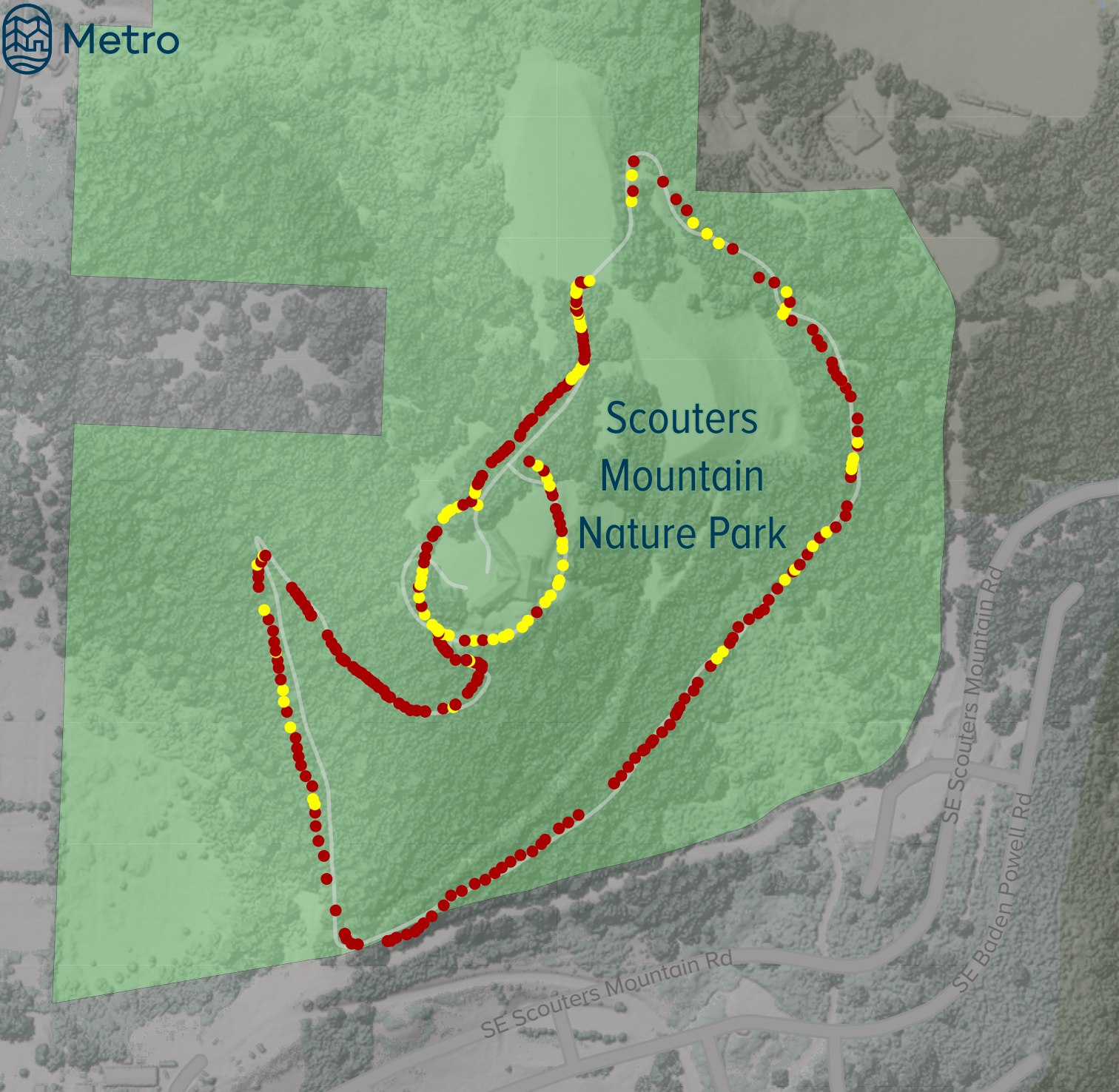
- ≤2.08%
- >2.08%

Trail assessments performed in Summer 2017 by WT Group to support Metro Parks and Nature Access Audit and Transition Plan.



# Scouters Mountain Nature Park

## Trail Cross Slopes



- Cross Slope
- ≤2.08%
  - >2.08%

Trail assessments performed in Summer 2017 by WT Group to support Metro Parks and Nature Access Audit and Transition Plan.



# Smith and Bybee Wetlands Natural Area

## Trail Cross Slopes



Metro

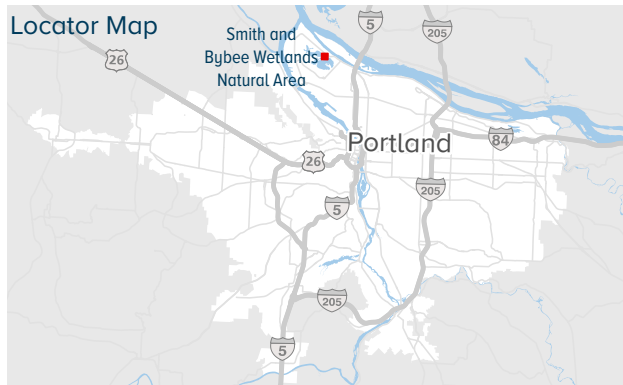
Smith and  
Bybee Wetlands  
Natural Area

N Marine Dr

N Marine Dr



0 187.5 375  
Feet



Cross Slope

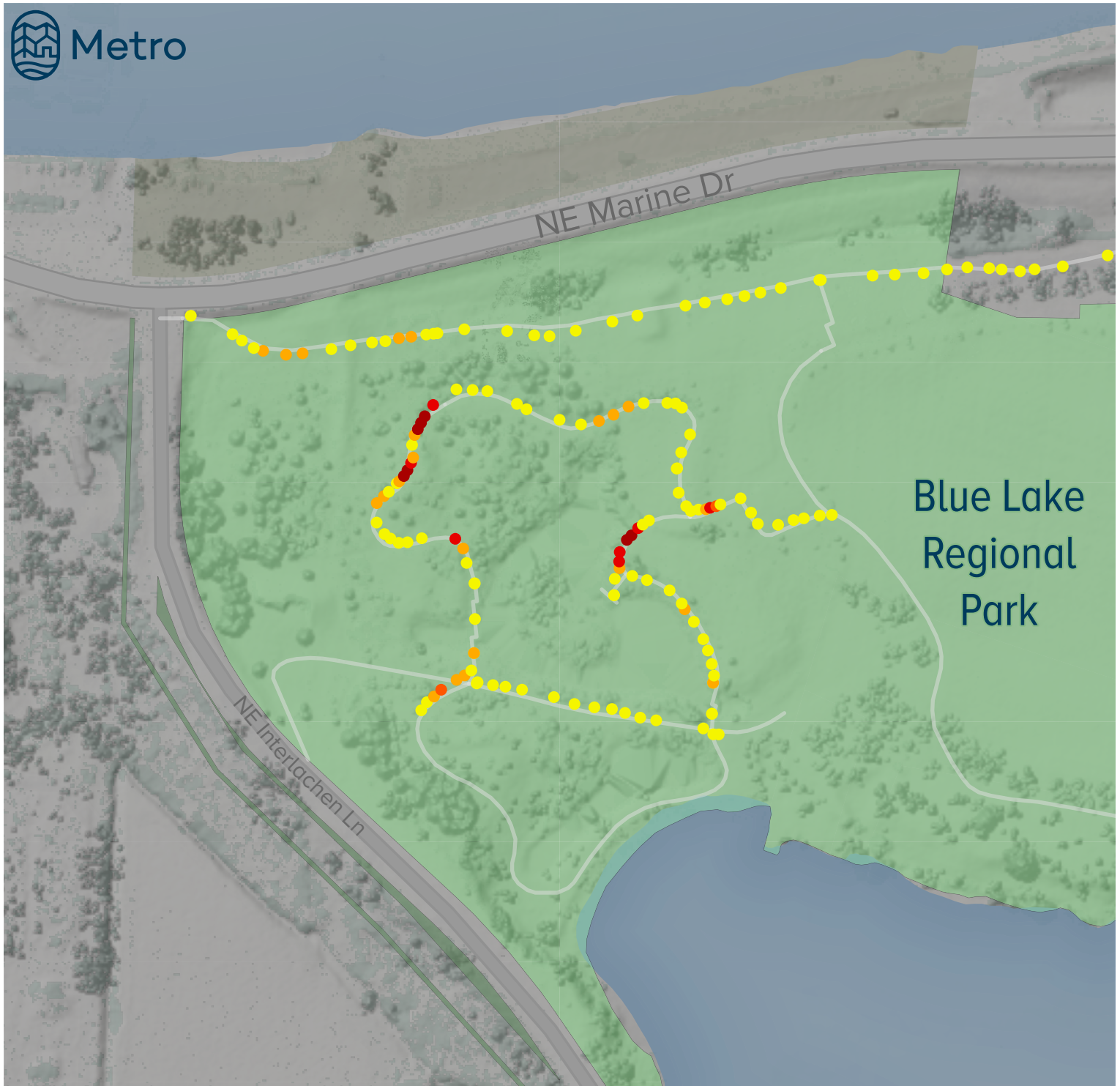
●  $\leq 2.08\%$

●  $> 2.08\%$

Trail assessments performed in Summer 2017  
by WT Group to support Metro Parks and  
Nature Access Audit and Transition Plan.

# Blue Lake Regional Park

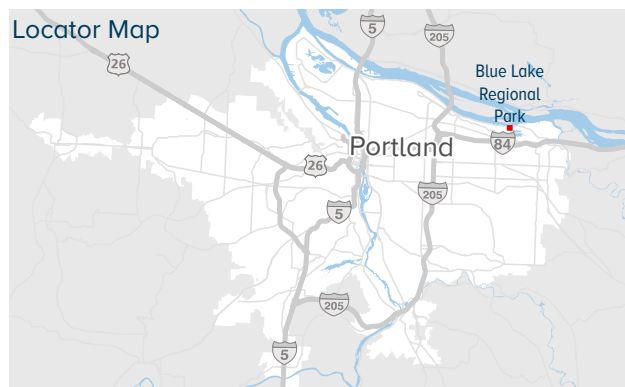
## Trail Running Slopes



Blue Lake  
Regional  
Park



0 125 250  
Feet



### Running Slope

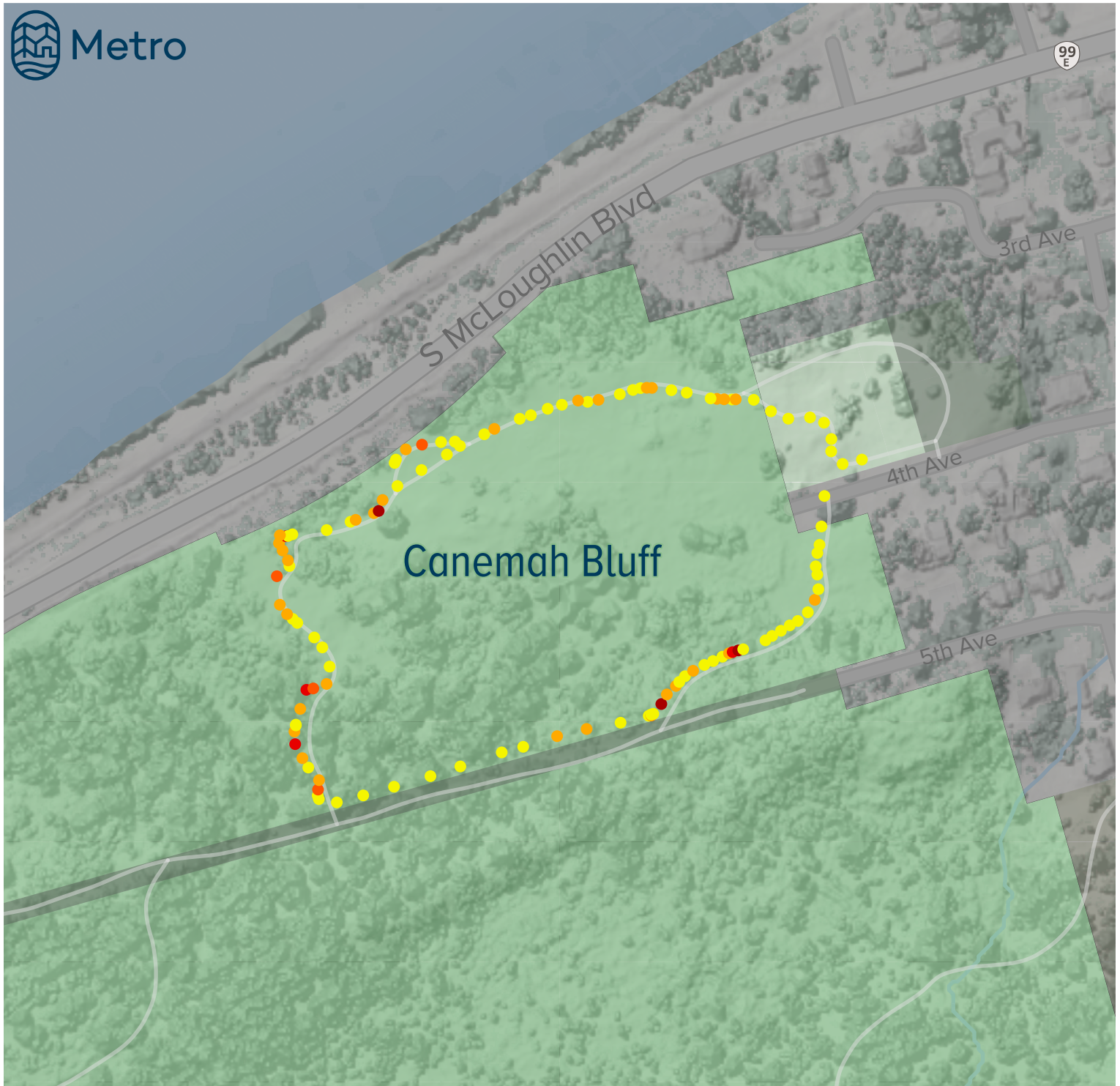
- ≤5.0%
- >5% and ≤8.3%
- >8.3% and ≤10%
- >10% and ≤12%
- >12%

Trail assessments performed in Summer 2017  
by WT Group to support Metro Parks and  
Nature Access Audit and Transition Plan.



# Canemah Bluff

## Trail Running Slopes



### Running Slope

- ≤5.0%
- >5% and ≤8.3%
- >8.3% and ≤10%
- >10% and ≤12%
- >12%

Trail assessments performed in Summer 2017 by WT Group to support Metro Parks and Nature Access Audit and Transition Plan.

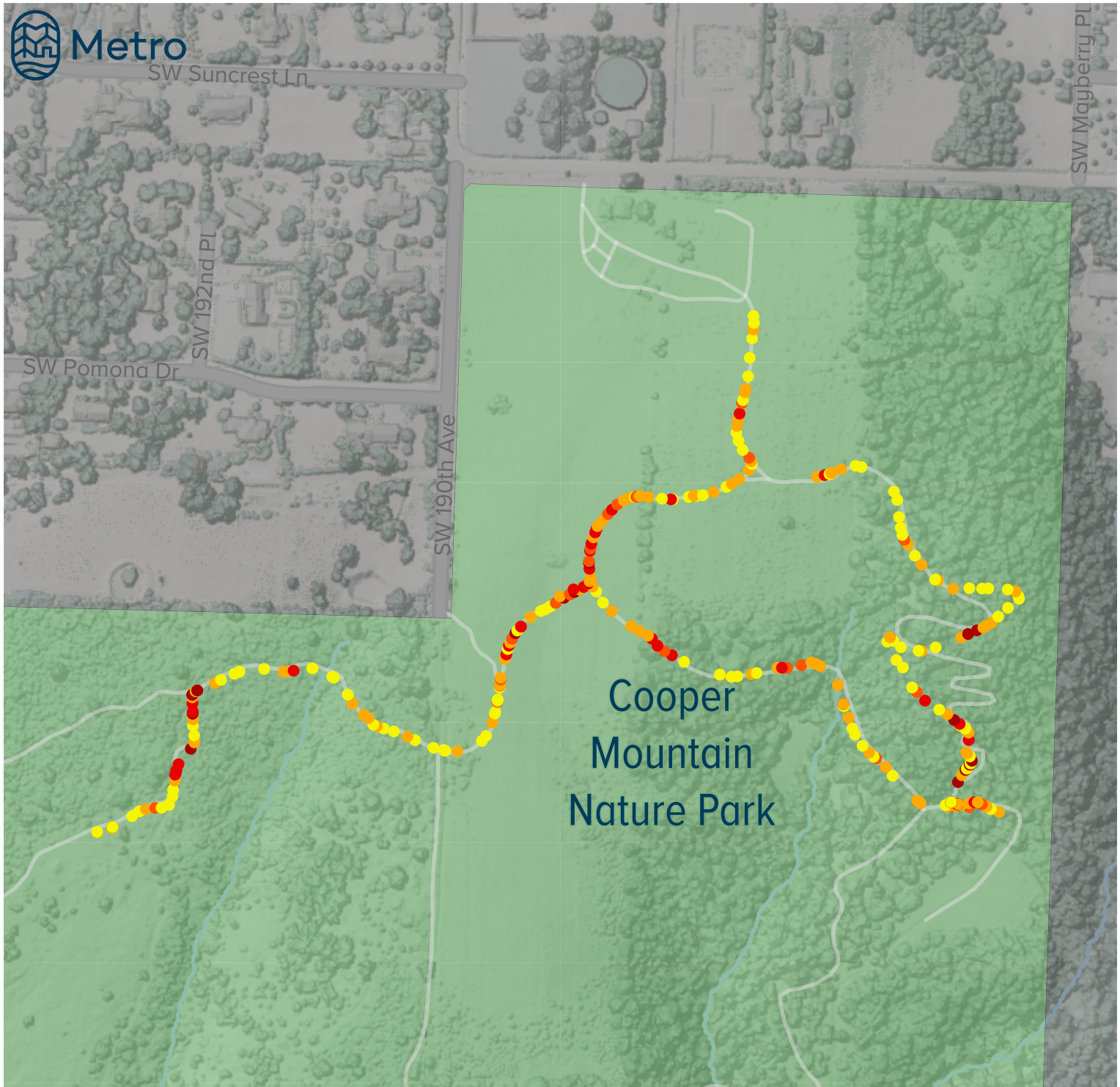


0 125 250  
Feet

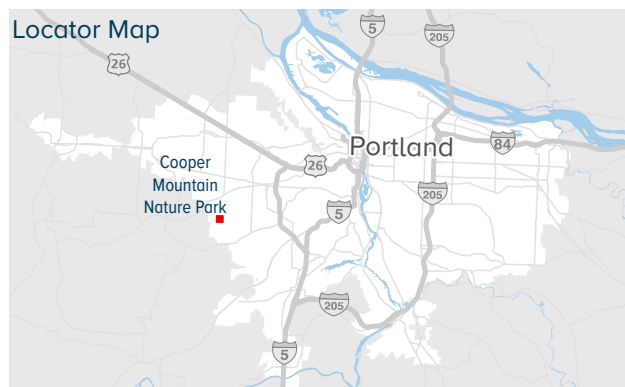


# Cooper Mountain Nature Park

## Trail Running Slopes



0 187.5 375  
Feet



### Running Slope

- ≤5.0%
- >5% and ≤8.3%
- >8.3% and ≤10%
- >10% and ≤12%
- >12%

Trail assessments performed in Summer 2017  
by WT Group to support Metro Parks and  
Nature Access Audit and Transition Plan.

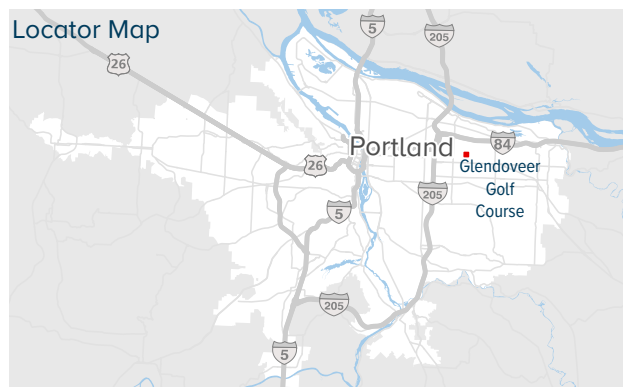


# Glendoveer Golf Course

## Trail Running Slopes



0 125 250  
Feet



### Running Slope

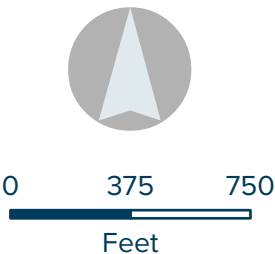
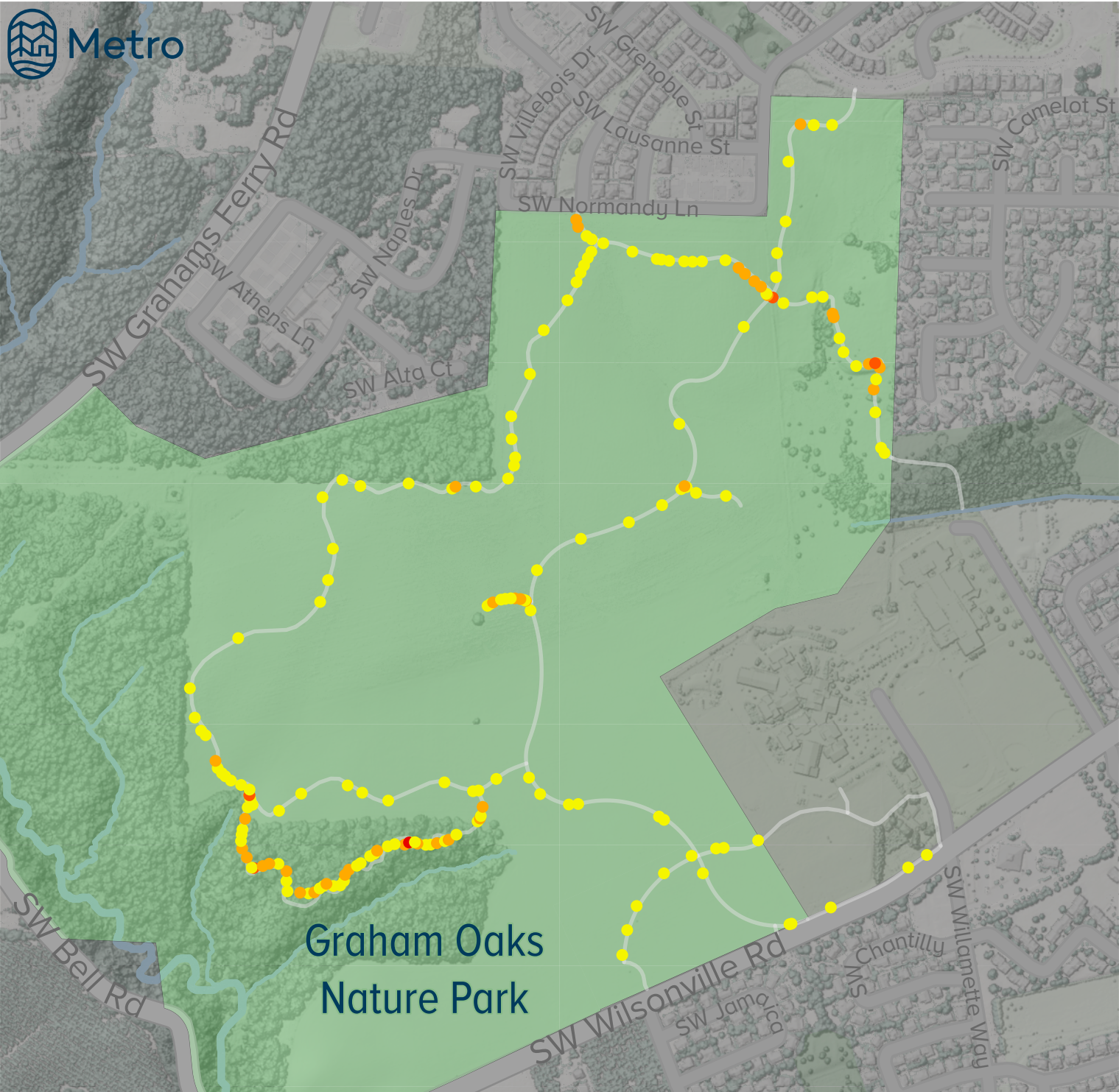
- ≤5.0%
- >5% and ≤8.3%
- >8.3% and ≤10%
- >10% and ≤12%
- >12%

Trail assessments performed in Summer 2017  
by WT Group to support Metro Parks and  
Nature Access Audit and Transition Plan.



# Graham Oaks Nature Park

## Trail Running Slopes



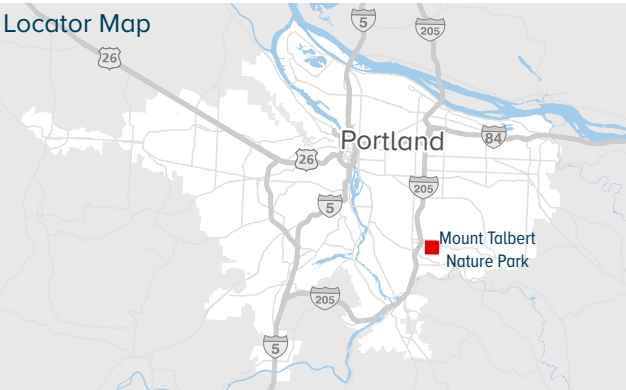
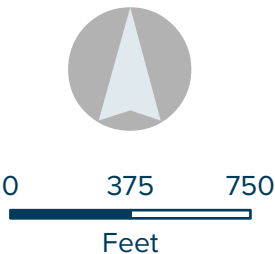
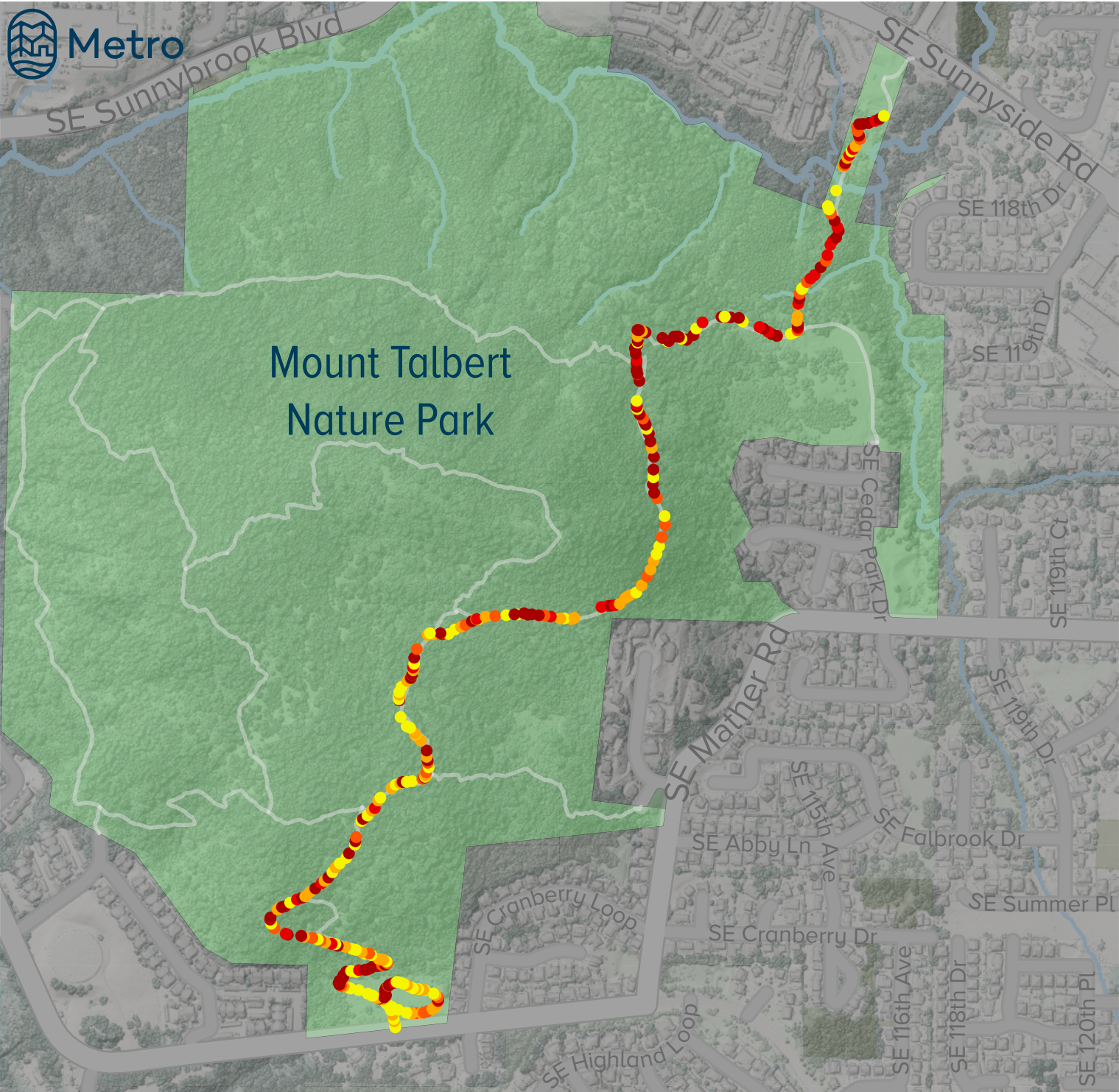
- Running Slope
- ≤5.0%
  - >5% and ≤8.3%
  - >8.3% and ≤10%
  - >10% and ≤12%
  - >12%

Trail assessments performed in Summer 2017 by WT Group to support Metro Parks and Nature Access Audit and Transition Plan.



# Mount Talbert Nature Park

## Trail Running Slopes



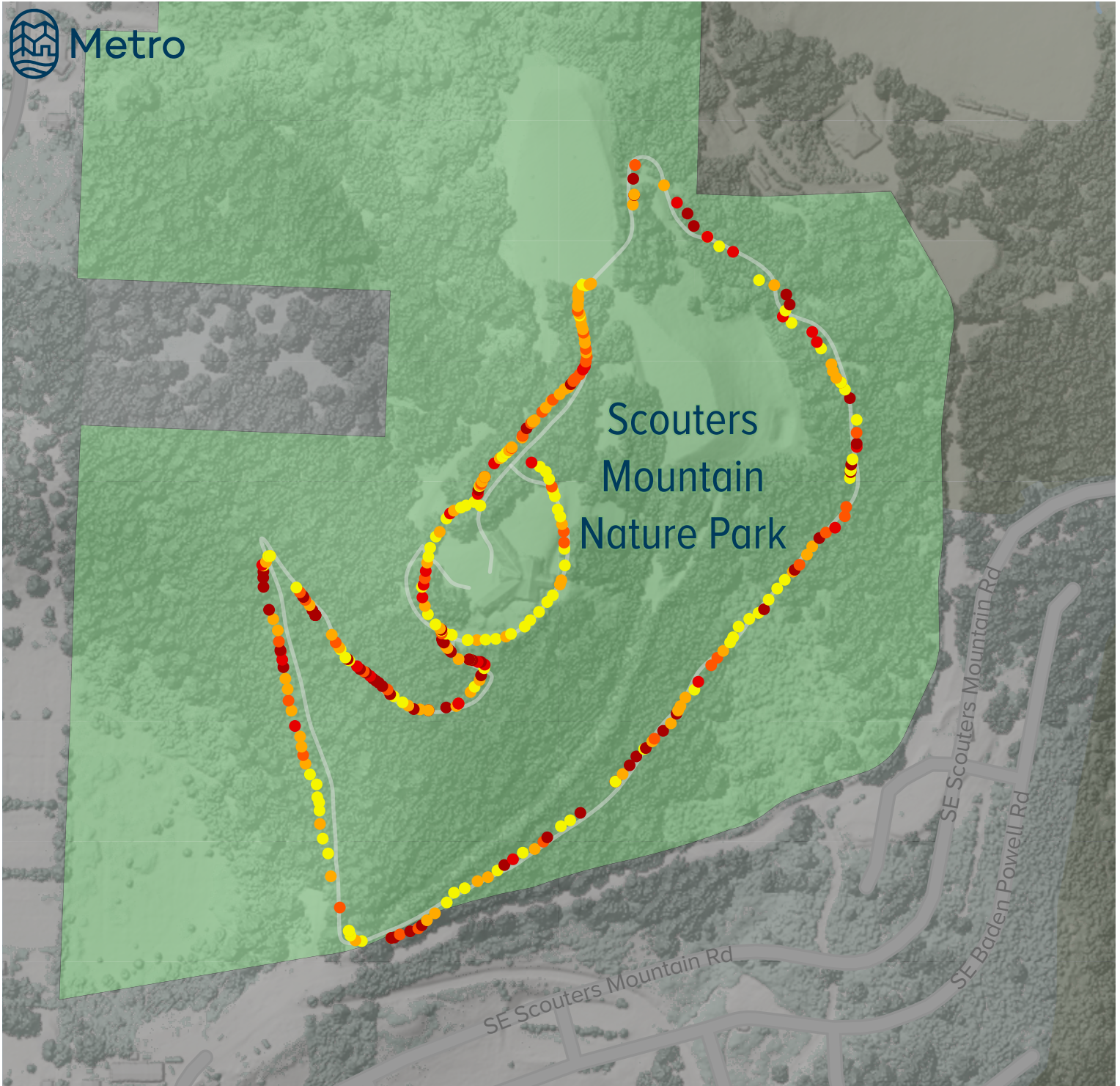
- Running Slope**
- ≤5.0%
  - >5% and ≤8.3%
  - >8.3% and ≤10%
  - >10% and ≤12%
  - >12%

Trail assessments performed in Summer 2017 by WT Group to support Metro Parks and Nature Access Audit and Transition Plan.

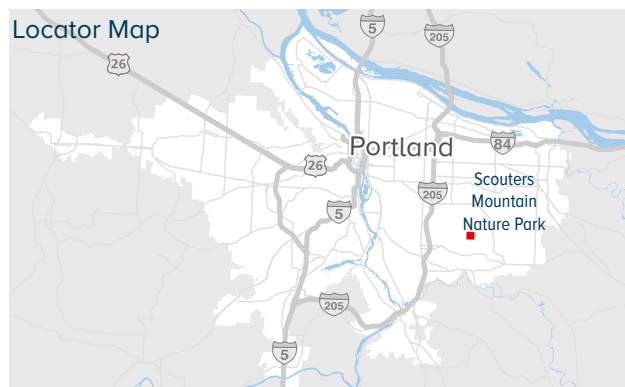


# Scouters Mountain Nature Park

## Trail Running Slopes



0 187.5 375  
Feet



### Running Slope

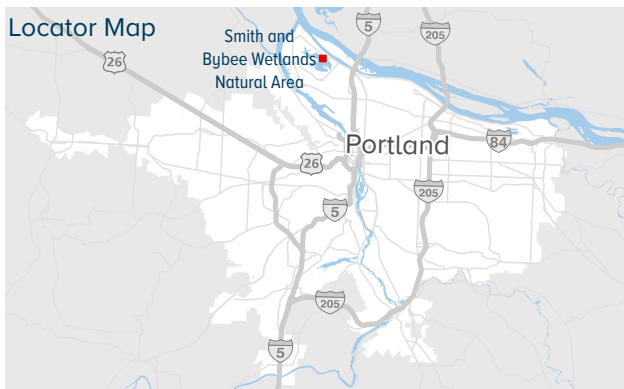
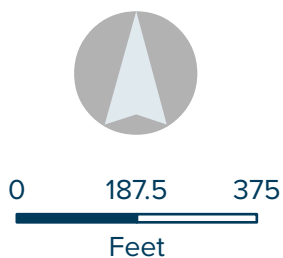
- ≤5.0%
- >5% and ≤8.3%
- >8.3% and ≤10%
- >10% and ≤12%
- >12%

Trail assessments performed in Summer 2017  
by WT Group to support Metro Parks and  
Nature Access Audit and Transition Plan.



# Smith and Bybee Wetlands Natural Area

## Trail Running Slopes



### Running Slope

- ≤5.0%
- >5% and ≤8.3%
- >8.3% and ≤10%
- >10% and ≤12%
- >12%

Trail assessments performed in Summer 2017 by WT Group to support Metro Parks and Nature Access Audit and Transition Plan.