



Master plan a nature park at Gabbert Butte that:

- **welcomes** people from all cultures, communities, and abilities and enhances neighborhood identity
- **protects** water quality and wildlife habitat and provides safe, meaningful experiences of nature
- **celebrates** the unique qualities of Gabbert Butte
- plans for a nature park Metro can **take care of** for years to come

- to improve public access to Gabbert Butte and improve the trail connectivity and experience
- to plan for and guide public access in a way that continues to protect water quality and wildlife habitat on Gabbert Butte
- to provide access to accommodate broad range of community members

- plan for parking & entry to welcome visitors
- identify activities, amenities, and program opportunities
- improve trails on Gabbert Butte
- Improve trail connections to Saddle Trail and consider connections to Hogan Butte

Kick-Off / Start Up

Existing Conditions and Opportunities

Site Plan Alternatives

Preferred Site Plan

Master Plan Report

Summer 2017

Open House 1

Project overview, goals
existing conditions
and opportunities

Mar 2018

Open House 2

Site Plan Alternatives

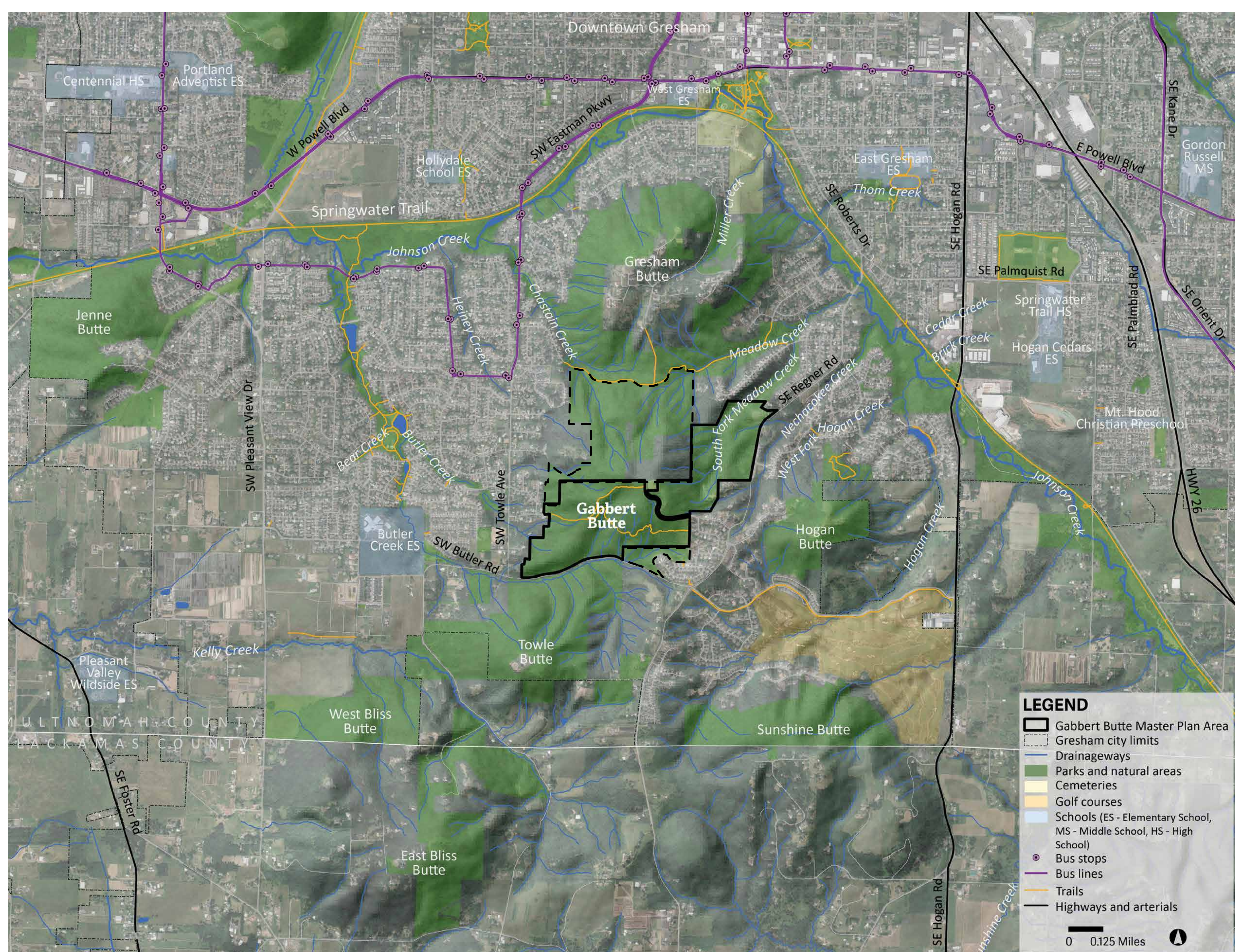
December 2018

Open House 3

Preferred Site Plan

Spring 2019

Online Review
Final Master Plan Document
Present to Gresham City Council
and Metro Council for adoption



GABBERT BUTTE NATURE PARK

Planning for parks trails & natural areas

The Gabbert Butte master plan is an opportunity for the City and Metro to work together to incorporate previous planning work that has been done in the East Buttes into a future vision for Gabbert Butte.

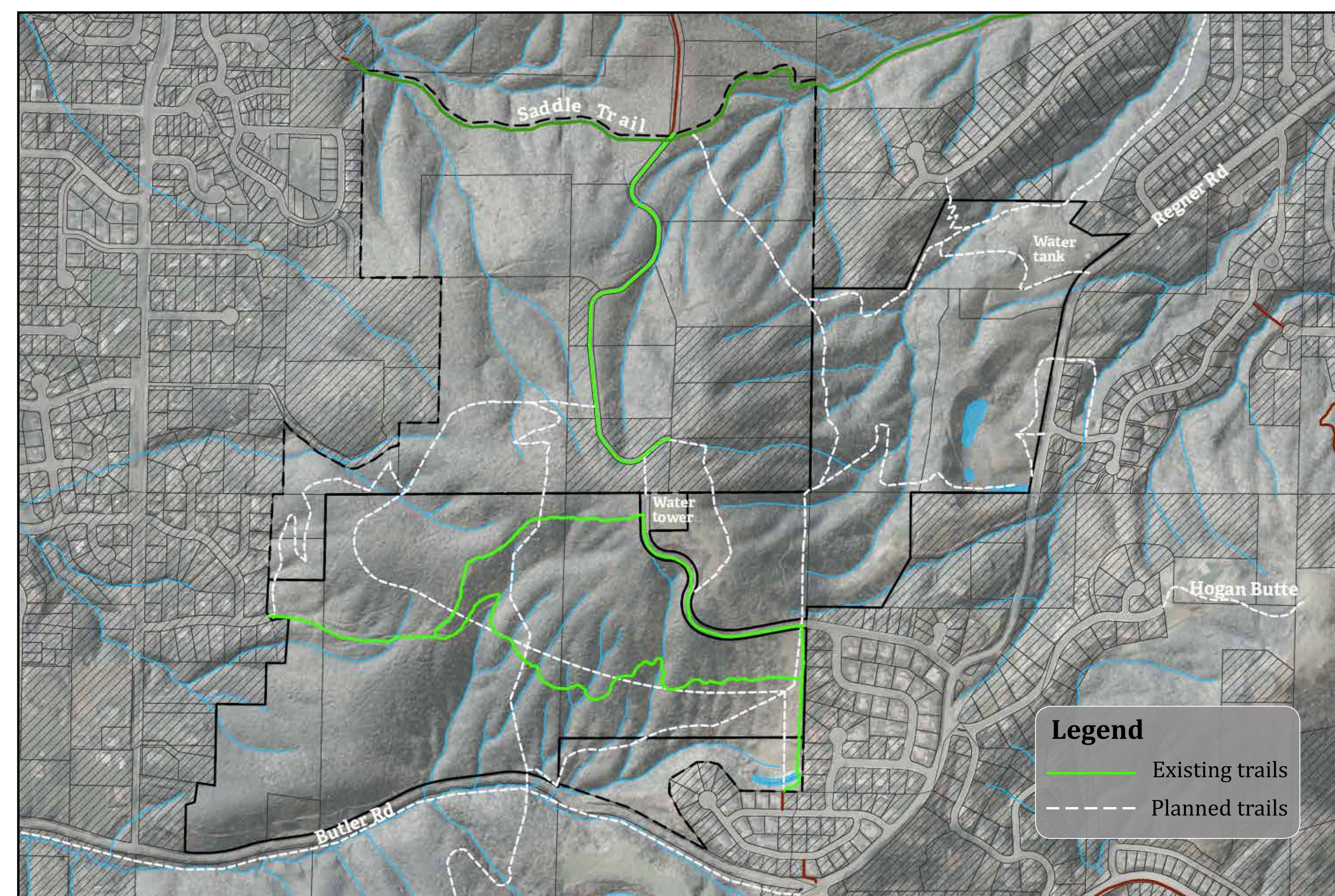
Below are recent plans that have been completed for the area:

Gresham parks, trails and natural areas master plan (Gresham 2009)

- Identified opportunities to enhance the City's park and recreation system that includes developing a 2.9-acre neighborhood park on Gabbert Butte.
- Community input in the master plan process identified the three greatest park needs: walking and biking trails, nature trails and neighborhood parks.

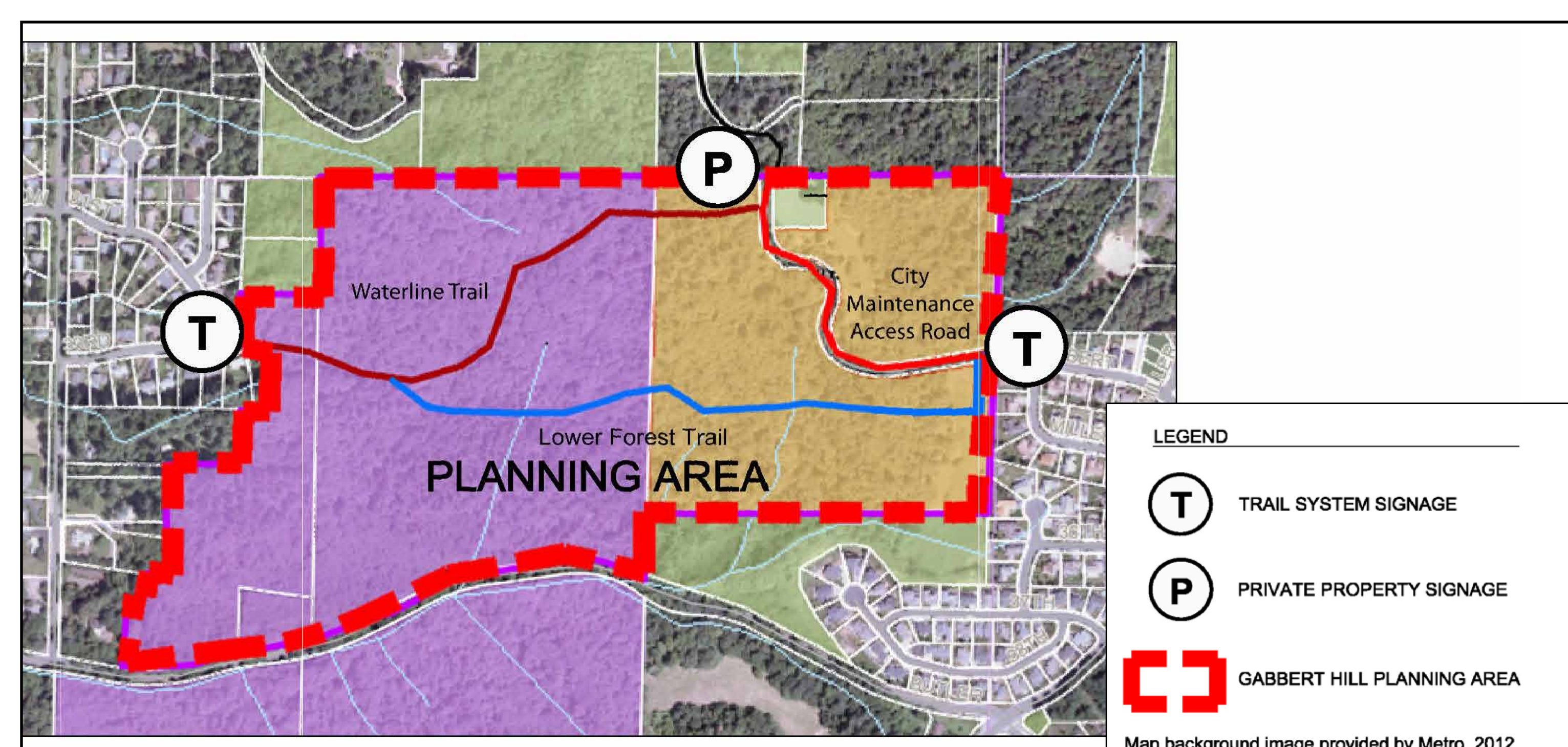
Trails and paths master plan map (Gresham 2015)

- Provides a framework for a connected network of trails and paths in Gresham.
- Gabbert Butte master planning considers these trail alignments in the proposed trail alternatives.



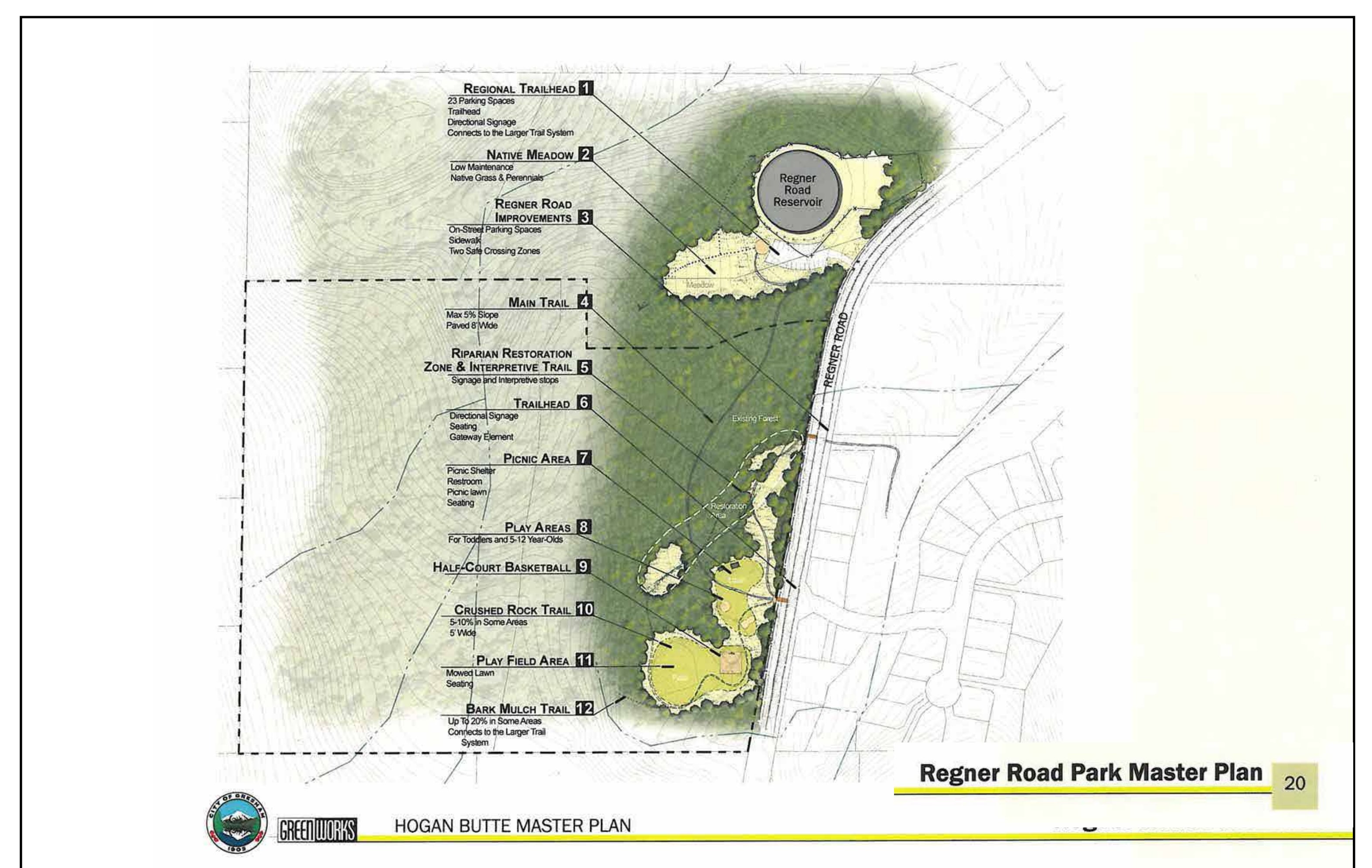
Gabbert Butte Interim Access Plan (Metro 2010)

- Completed to formalize management of public access at Gabbert Butte until a more comprehensive plan could be completed.
- Formalized trail loop on the butte, and provided new signs.
- Recommended completing a full access master plan for Gabbert Butte.



Regner Road neighborhood park master plan (Gresham 2008)

- As part of the Hogan Butte Master plan process, a master plan was developed for a 2.9 acre neighborhood park across from Southeast 29th Street at Regner Road.
- Gabbert Butte Master planning expands on this vision to plan a nature park incorporating elements of the neighborhood park master plan.



East Buttes Site Conservation Plan (Metro 2014)

- East Buttes Complex Site Conservation Plan (SCP) identified desired future conditions and a long-term strategy for conservation of Metro managed natural areas in the East Buttes.
- The plan identified areas south of Butler road as habitat preserves, to be prioritized for large core habitat areas with very limited access for people.
- The plan recommended Gabbert Butte as an opportunity for providing public access, and promoting experiences of nature.

