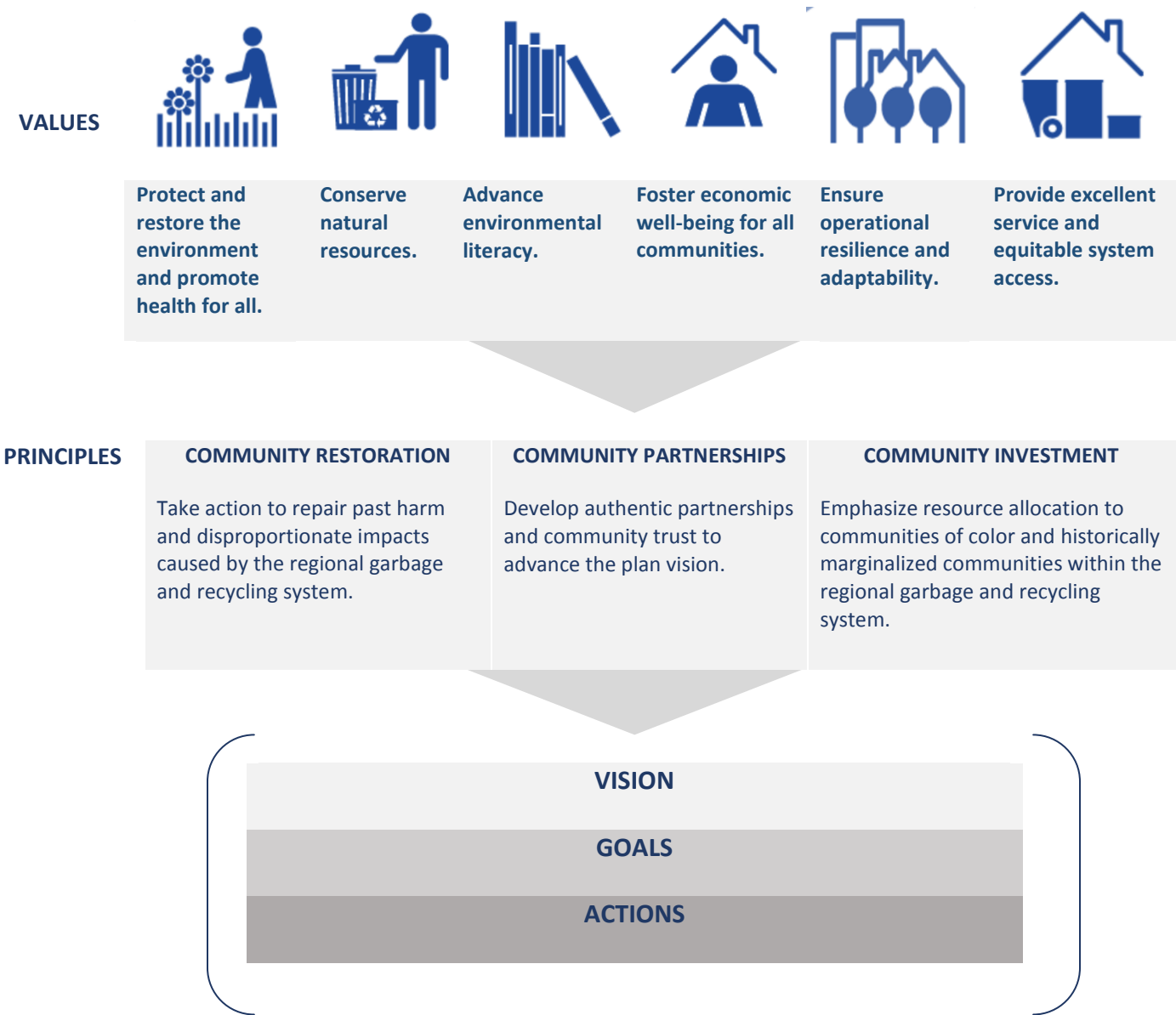


2030 Regional Waste Plan

February 2018

Values and Principles

Metro Council endorsed values and principles for the 2030 Regional Waste Plan in August 2017. The values and principles, summarized below, serve as the foundation of the plan. The values lay out the essential concepts that serve as a basis for the plan’s vision and goals and will guide plan implementation. The principles serve to advance racial equity by guiding the actions to achieve the plan’s vision and goals.



Vision and Goals

Metro Council endorsed the vision and goals in January 2018 that fall into in eight areas of work. The vision and goals are written to set the direction for the future and accommodate a range of actions the region can take to accomplish the goals. Each area has a *future desired outcome* statement in bold and a set of goals to achieve that vision. The actions to achieve the goals will be developed as part of phase 4 of the plan development.

Healthy Products

Companies that manufacture and sell products and packaging share responsibility with consumers for minimizing the impacts of these items on public health, climate, air quality, waterways and wildlife throughout product life cycles.

1. Decrease chemicals of concern in products and packaging with a focus on those that most impact vulnerable populations.
2. Reduce the climate, air quality, water quality and wildlife impacts of products and packaging that are manufactured, sold, used, or disposed in Oregon.
3. Increase the availability and affordability of products that are less toxic and have minimal packaging.
4. Increase the types of products and packaging for which manufacturers and retailers provide environmentally sound, convenient and accessible recovery opportunities.
5. Increase the types of products for which companies provide easy to understand, accessible information about health and environmental impacts and reparability.

Education and Information

Everyone has the culturally relevant, age appropriate information and educational resources needed to make decisions on products from purchasing to disposal that will protect their health and the environment.

1. Increase understanding among community members about garbage, recycling and reuse services.
2. Increase understanding among community members about the connections between consumer products and nature.
3. Increase engagement of youth and adults in garbage and recycling decision-making through civic engagement and leadership opportunities.

Reduce, Reuse and Repair

Reduce, reuse, repair, and donation are mainstream practices accessible to all, creating economic opportunity and building community self-reliance.

1. Reduce the per capita amount of waste generated by households and businesses.

2. Increase opportunities for reuse and repair of prioritized materials and products at garbage and recycling facilities.
3. Improve prevention, reuse and repair opportunities for textiles and other high environmental impact materials and products.
4. Increase building deconstruction and improve prevention, reuse and repair opportunities for high impact building materials.
5. Prevent the overproduction of prepared food and increase donation of nutritious, edible food to communities in need.

Quality Service

Garbage and recycling services meet the needs of all people and all communities.

1. Ensure regionally consistent services for garbage, recycling and food scraps that meet the needs of all users.
2. Increase the access, affordability and consistency of services for bulky, hazardous, illegally dumped and other challenging materials.
3. Ensure rates for all services are reasonable, responsive to user economic needs, regionally consistent and well understood.
4. Proactively address and resolve community concerns and service issues.

Garbage and Recycling Operations

From trucks to facilities, our garbage and recycling system is safe for workers and the public, minimizes pollution of air, soil and water, and is financially sustainable.

1. Minimize health and safety risks to workers and customers at garbage and recycling facilities.
2. Minimize the health and safety impacts experienced by communities near garbage and recycling facilities.
3. Invest in communities that receive garbage and recyclables from the Metro region, so that solid waste facilities are regarded as assets by those communities.
4. Collection, processing, transfer and disposal operations are designed and implemented to reduce their nuisance, safety and environmental impacts.
5. Maintain a sustainable financial and revenue infrastructure that advances the overall values and principles of the plan.
6. Improve material quality in the region's recycling and composting streams.

Good Jobs

All garbage and recycling industry jobs pay living wages and provide opportunities for career advancement. All occupations in the industry reflect the diversity of our local communities.

1. Ensure that all jobs in the garbage and recycling industry pay living wages and good benefits.
2. Increase the diversity of the workforce in all occupations where marginalized communities, including women and people of color, are underrepresented.
3. Create strong career pathways and training opportunities within all garbage and recycling industry occupations for underrepresented workers and people entering the workforce.

Economic Prosperity

Innovation, investments and partnerships support a thriving recycling, reuse and repair economy that benefits local communities.

1. Increase government support for employment and business development opportunities in the local recycling, reuse and repair economy.
2. Increase the percentage of solid waste system revenue that benefits local communities and locally-based companies.
3. Increase the capacity and diversity of local markets to make our recycling, reuse and repair system more effective and resilient.
4. Increase government purchasing of environmentally preferable products, made regionally, that use recovered materials.

Preparedness and Resilience

The region's garbage and recycling system is resilient and prepared to recover quickly from disruptions like natural disasters, while minimizing harmful impacts to the most affected communities.

1. Improve the coordination between local, state and federal governments and private and non-profit sector partners in planning for the impact of disruptions on the solid waste system.
2. Ensure communities in the region have access to accurate and reliable data and timely information about the impact of disruptions to solid waste facilities and services, as well as an inventory of capabilities and resources to respond and recover.
3. Improve public and private solid waste infrastructure and facilities to make them resilient and minimize the impacts of disruptions.
4. Ensure routine garbage and recycling collection, processing, transport, and disposal operations are resilient and are restored quickly following a system disruption.
5. Improve disaster debris response operations to expedite the clearance and removal of debris, making the best use of locally-based resources.
6. Ensure disaster debris recovery operations maximize the amount of material recovered and recycled, while minimizing potential environmental and public health impacts.