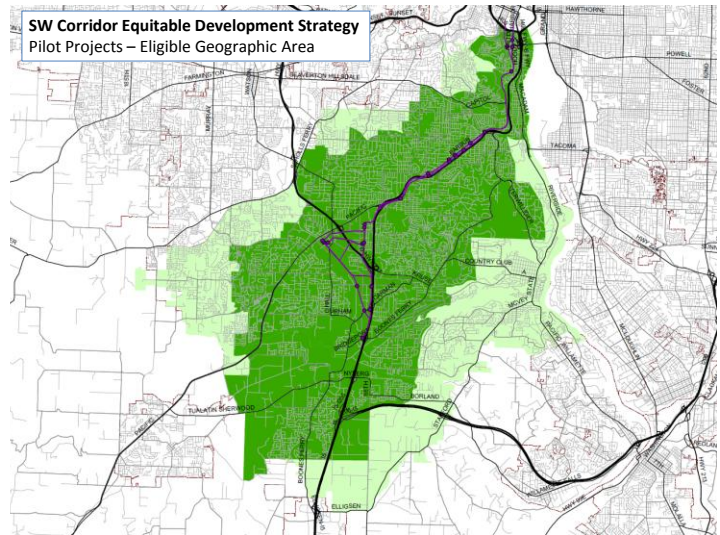


Southwest Corridor Equitable Development Strategy (SWEDS) – Pilot Projects

Equitable Development Pilot Projects:

The Southwest Corridor Plan envisions a livable, affordable, economically thriving community with reliable and safe transportation options for every resident and commuter. With this vision in mind, the Southwest Corridor Equitable Development Strategy strives to ensure that individuals and families continue to live, work and thrive in the Southwest Corridor as we invest in such a major transportation project like light rail. This means making sure Southwest Corridor neighborhoods have:

- different choices for where to live for people of all incomes
- a range of jobs for people of all backgrounds
- learning opportunities that prepare people for those jobs
- wages that support people's desire to live and work in the corridor.



Equitable Development Pilot Projects are intended to inform, advance, and facilitate future work in support of the Equitable Development Strategy while sustaining or enhancing community-driven initiatives that prepare communities for the changes and opportunities light rail and other investments would bring to the Southwest Corridor. Funds will target a mix of projects within and across two sub-categories aligned with priorities of SWEDS advisory groups. Examples include:

Equity + Housing:

- Capacity building to address equitable development challenges related to racial equity and historically marginalized communities.
- Activities to expand organizational capacity and community partnerships to support affordable housing development and preservation.
- Creation of new tools or programs to provide resident support or community stabilization services.
- Activities to support station or district-level community benefits agreements.
- Organizational planning or seed funding that will launch new funding tools and/or create new partnerships to support the acquisition, construction, or preservation of affordable homes.

Business + Workforce:

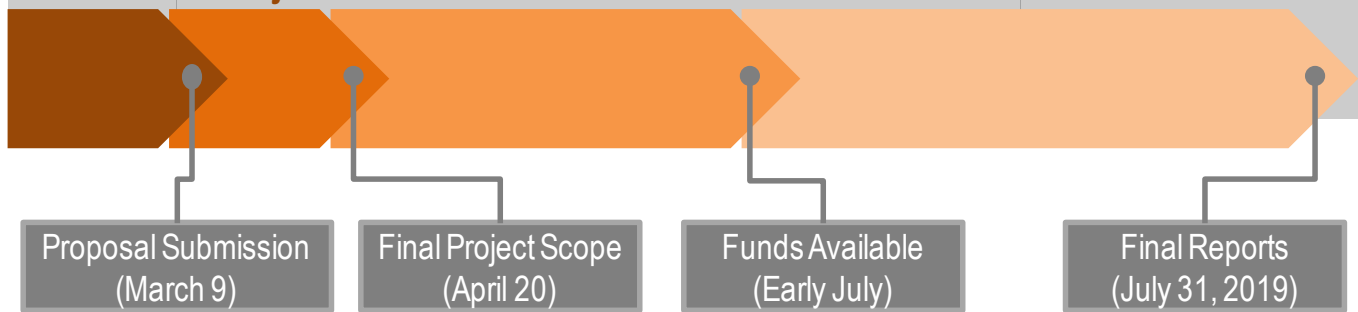
- Targeted job training and workforce support services not currently available
- Business support services and stabilization activities
- Activities to improve Small, Disadvantaged, Minority, Women Business Enterprise (SDMWBE) representation (e.g. new business coalition or association that addresses a gap in the SW Corridor)
- Activities to support station or district-level economic partnerships and agreements
- Coordinated approaches to alternative finance lending and community investment

Funding Available:

- Up to \$275,000 available. A minimum of \$25,000 and maximum of \$100,000 for projects completed within 12 months.
- In-kind/financial matches and joint applications between partners are encouraged for those with this capacity.
- All funds are awarded to projects in the eligible geographic area (Detailed map and associated zip codes and census tracts provided to all prospective applicants).

2018

2019

SWEDS Pilot Project Selection Timeline**Overview of Selection Process:**

1. Applicants submit proposals with assistance from Metro.
2. Proposals reviewed by a Selection Committee of project staff and interested members of SWEDS committees and advisory groups that are not applying: SWEDS Project Oversight Committee (SPOC), Equity + Housing Advisory Group (EHAG), and Business + Workforce Advisory Group (BWAG).
3. Selection Committee selects proposals to fund and advance into scope development. Full SPOC will review selections, but SC has final recommendation to Metro Planning + Development Director and Metro Council for funding.
4. Proposals are selected under condition that a final scope + budget will be developed in consultation with Metro staff.
5. Applicants will present their final scope to SPOC to seek any final input before funds are available.

Important Dates:

An optional applicant orientation meeting was held on February 6th at Metro. A FAQ sheet and other materials from this meeting are available to all applicants. Details regarding application questions and evaluation criteria will be provided at this meeting. Important dates include:

| | |
|---------------------|---|
| – February 9 | Open for proposal submissions |
| – February-March | Metro Staff provides support to applicants |
| – March 9 | Due date for proposal and draft budget |
| – March 15 | Selection Committee (SC) selects projects to recommend |
| – March 22 | SPOC reviews SC recommendations |
| – March 23 | Metro selection, notification & scope meeting schedule with applicants |
| – March 27 | Metro Council Work Session to review selected projects |
| – April 23 | Final project scope & budget due |
| – April 27 | Contracts/Awards announced |
| – May 21 | Project work plan presentations to SWEDS Project Oversight Committee |
| – Early July | Funds available |
| – July 31, 2019 | Projects, Quarterly/Final Reports, + Invoicing must be complete |

Who Can Apply?

The primary applicant may be a community based organization, city or county, or other not-for-profit entity (Including all 501 (c) organizations: nonprofit corporations and organizations that promote social welfare, business associations, chambers of commerce, and labor associations. Applicants must have the capacity to contract with Metro (including insurance and bookkeeping requirements), cannot claim proprietary ownership of work products, and must have a federal Employee Identification Number (EIN), obtain a Data Universal Number System (DUNS) number, and register with the federal System Award Management (SAM) system. Metro staff will support applicants in this process.

Primary Staff Contact:

Contact Brian Harper (SWEDS Project Manager) at brian.harper@oregonmetro.gov or 503-797-1833 for inquiries regarding submitting a proposal.