



Metro



District 4 Metro Update

• Councilor Harrington • February 20, 2018

Overview

- Transportation planning and funding
- Growth Management
- Parks and Nature
- Solid Waste
- Housing

Regional transportation plan

A transportation system that cuts congestion, supports clean air and improves safety across our region.



Transportation funding

Our region is growing rapidly, and our transportation system needs to keep up.



Growth management

Working together,
we can maintain
our quality of life
and protect the
farms and forests
around our region.



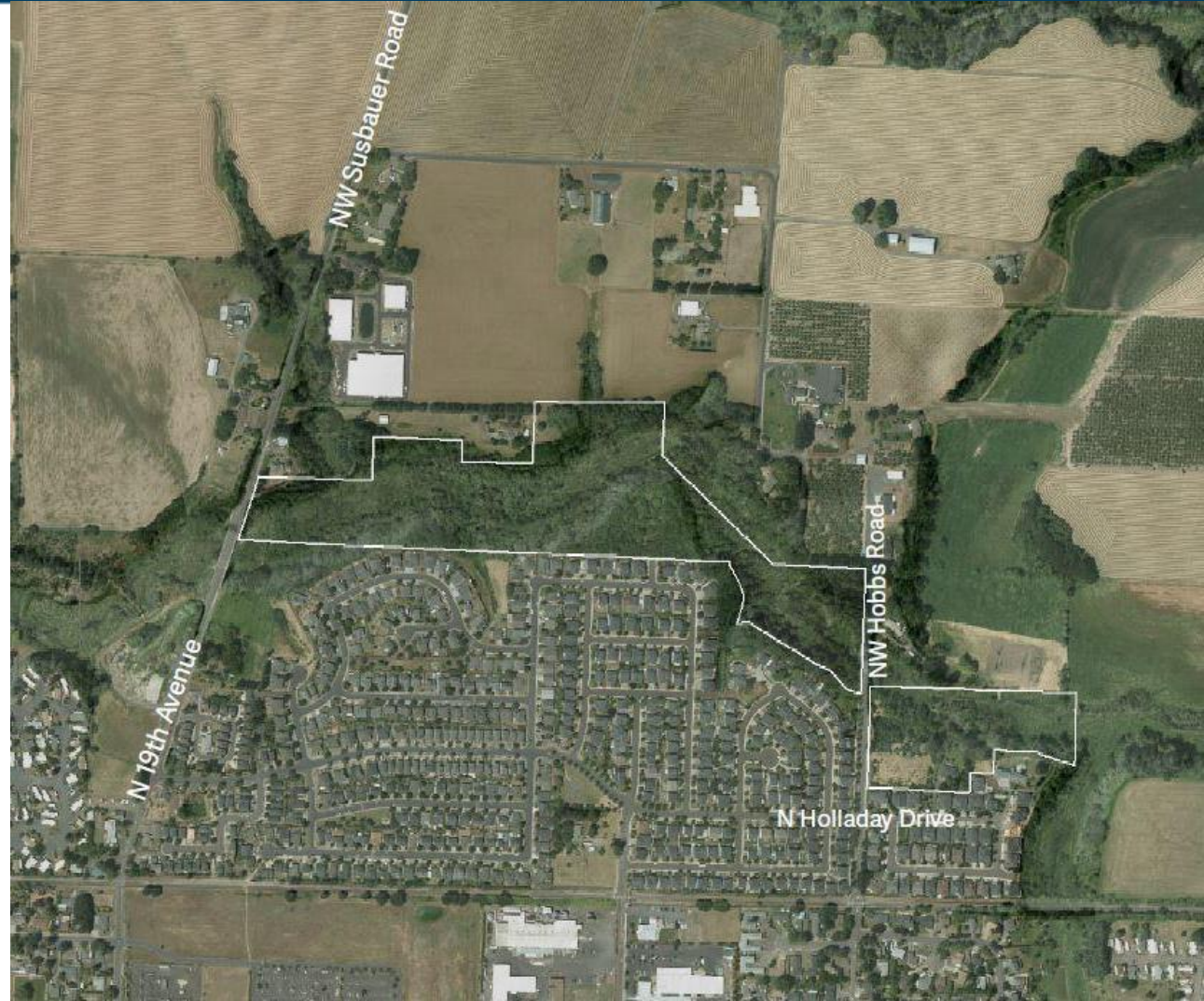
Growth management

Working together,
we can maintain
our quality of life
and protect the
farms and forests
around our region.



Parks and nature

Connecting
Cornelius residents
to nature



Solid waste & food scraps

Working together
to make the most
of what we don't
want



Affordable housing

Challenges in the housing and job markets, environment and transportation system do not stop at city limits or county lines.

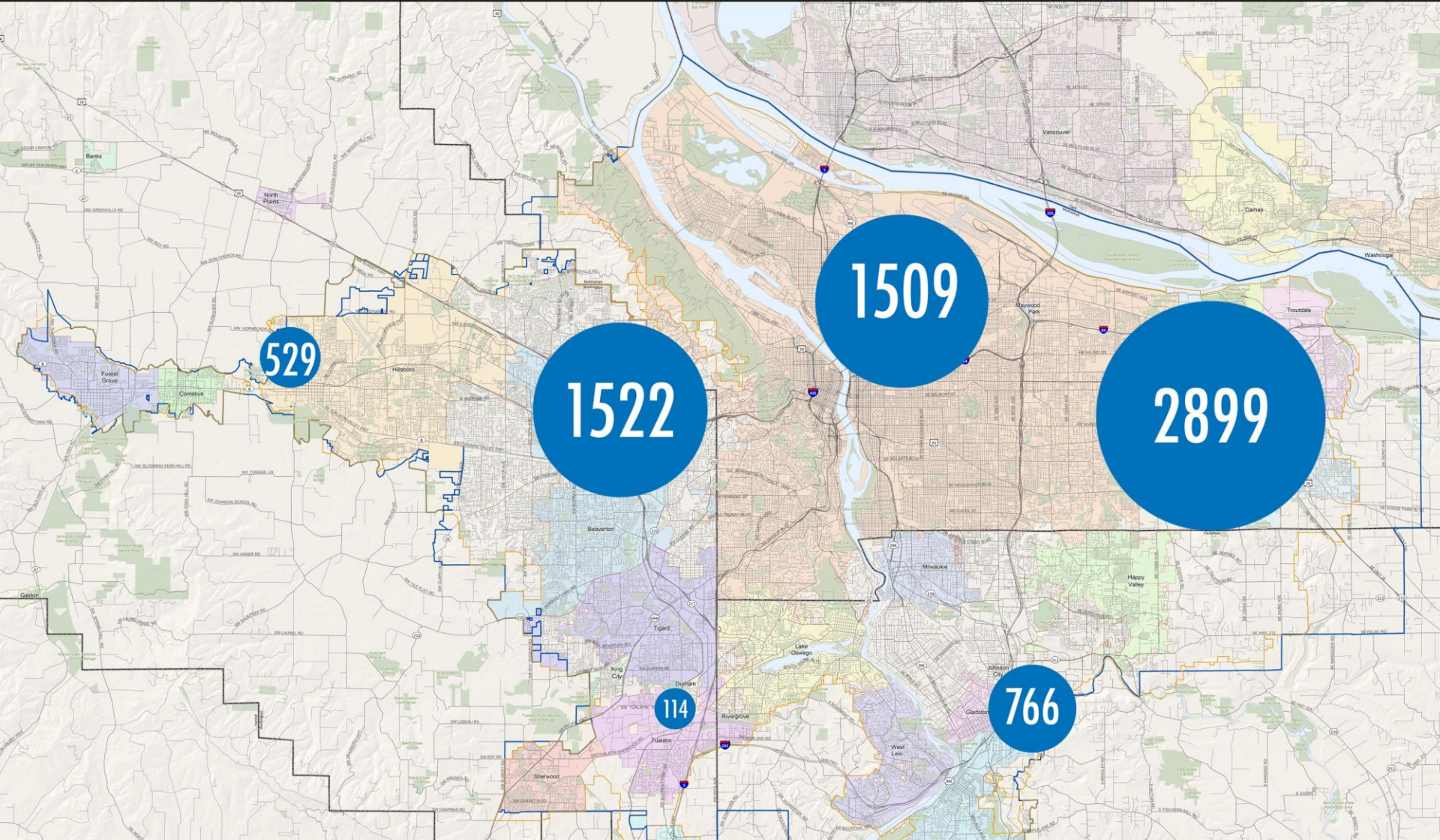


Affordable housing

Challenges in the housing and job markets, environment and transportation system do not stop at city limits or county lines.



Affordable housing



Affordable housing

Challenges in the housing and job markets, environment and transportation system do not stop at city limits or county lines.



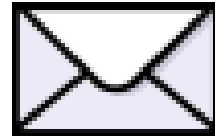
Your questions

Kathryn Harrington

Metro Councilor, District 4

503-797-1553

kathryn.harrington@oregonmetro.gov



www.oregonmetro.gov/connect



Arts and conference centers

Garbage and recycling

Land and transportation

Oregon Zoo

Parks and nature

oregonmetro.gov