



Metro

2018 Regional Transportation Plan Economic Value Atlas Task Force | 11/17/17

Kim Ellis, RTP Project Manager

Regional Transportation Plan

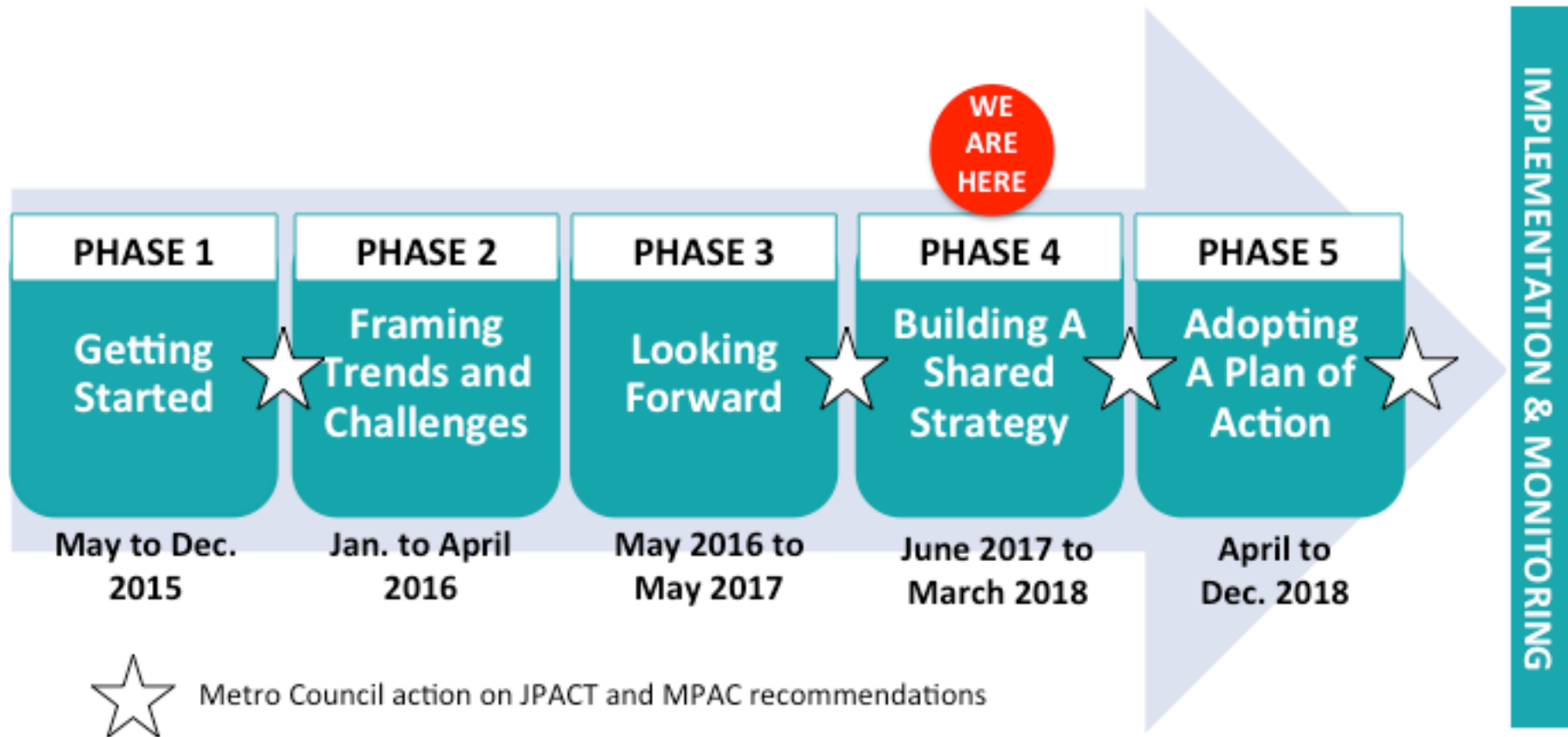
Sets the course for moving the region safely, reliably and affordably for decades to come

Establishes priorities for federal, state and regional funding

Required at least every 4 years



RTP timeline



2040 Growth Concept is our foundation



2014 REGIONAL
ACTIVE
TRANSPORTATION PLAN



Regional
Transportation Plan

Adopted July 17, 2014
www.oregonmetro.gov/rtp

2014



Climate Smart Strategy
for the Portland metropolitan region

oregonmetro.gov/climatestrategy

2014

**Adopted
State and
local plans**

**2040 Growth Concept
Adopted in 1995**

Building toward six desired outcomes



Vibrant communities



Equity



Economic prosperity



Transportation choices



Clean air & water



Climate leadership

Policy priorities for the plan update



Transit



Equity



Safety



Freight

**CLIMATE
SMART
STRATEGY**



Finance



Performance



Design

The policy priorities define the primary focus of the technical work, policy discussions and engagement activities to support development of the 2018 RTP.

Challenges to our economic prosperity and quality of life

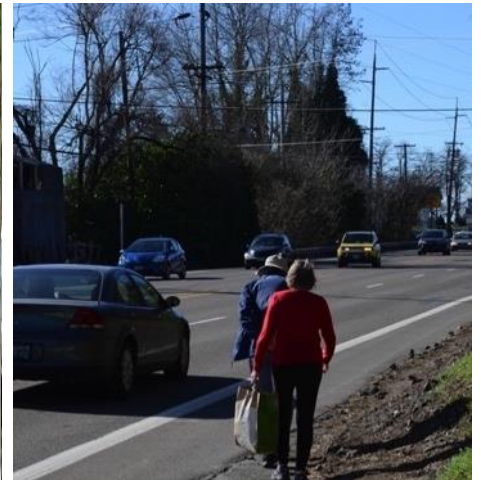
- Aging infrastructure
- Growing congestion, less reliability for people and freight
- Fatal and serious injury crashes
- Earthquake vulnerability
- Social inequity and disparities
- Gaps in transit, biking and walking connections
- Housing and transportation affordability and displacement
- Climate change and air quality
- Emerging technologies



2018 RTP Quick Poll Surveys (2015 and 2016), Regional Snapshots on Transportation (2016-17), technical work groups and regional advisory committee discussions (2016-17) and Regional Leadership Forums 1, 2 and 3 (2016)

Our shared vision

In 2040, everyone in the Portland metropolitan region will share in a prosperous, equitable economy and exceptional quality of life sustained by a safe, reliable, healthy, and affordable transportation system with travel options.



This vision statement was recommended by the Metro Council, JPACT and MPAC in May 2017.

Adopted RTP policy goals and desired outcomes

WHAT WE WANT TO ACHIEVE

Vibrant communities

Economic prosperity

Transportation choices

Travel efficiency

Safety and security

Environmental stewardship

Public health

Climate leadership

HOW WE GET THERE

Equity

Fiscal stewardship

Accountability

RTP Goals (first adopted in 2010, amended in 2014, and put forward for 2018)

More than \$3 billion invested in Regional Transportation Plan projects from 2014 - 2019

These projects were funded through a combination of private development, and local, state and federal funds.
For more information visit oregonmetro.gov/rtp



City of Portland Highlights

| | | |
|--|-----------------------------------|------|
| | I-5/Delta Park Interchange | 2015 |
| | Killingsworth Street Improvements | 2015 |
| | Portland Bike Share | 2016 |

Washington County Highlights

| | | |
|--|--|------|
| | OR 217 Intelligent Transportation System | 2014 |
| | Westside to Waterhouse Trail connection | 2016 |
| | US 26/Shute Road Interchange | 2016 |

Multnomah County Highlights

| | | |
|--|----------------------------------|------|
| | I-84/Troutdale Interchange | 2015 |
| | Sellwood Bridge Replacement | 2017 |
| | Wood Village Boulevard Extension | 2014 |

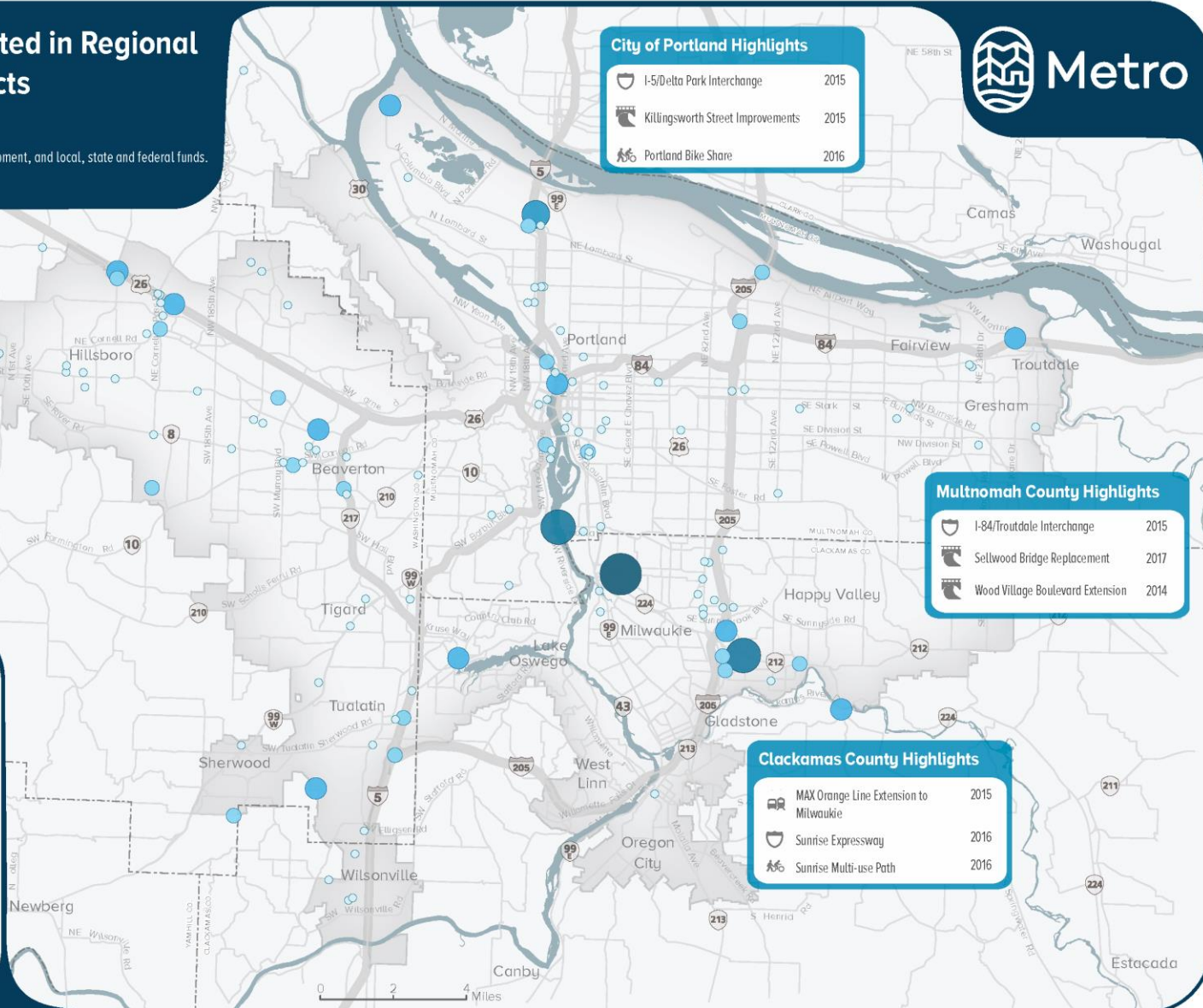
Completed 2014 RTP Projects

Estimated cost (2016 dollars)

| | | |
|--|---------------------------------|--------------|
| | less than \$10 million | 100 projects |
| | \$10,000,001 - \$25,000,000 | 17 projects |
| | \$25,000,001 - \$50,000,000 | 11 projects |
| | \$50,000,001 - \$100,000,000 | 1 project |
| | \$100,000,001 - \$1,000,000,000 | 2 projects |
| | greater than \$1 billion | 1 project |

Total projects 132

September 28, 2017



More than \$3 billion invested since 2014

Does not include ongoing transit and highway/road maintenance and operations costs.

View the interactive map of completed projects at: oregonmetro.gov/rtp

Draft 2018 RTP project priorities

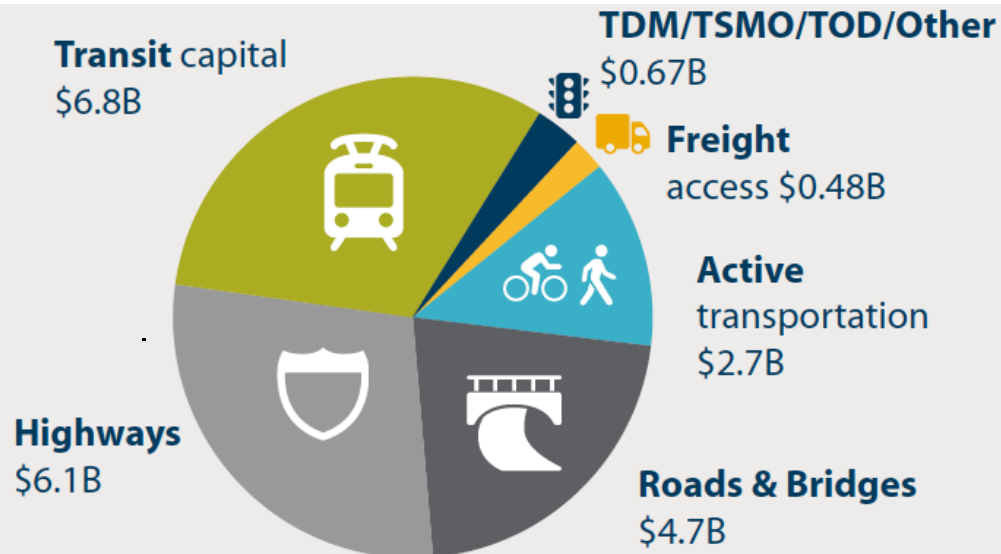
submitted by cities, counties, ODOT, TriMet, SMART and other jurisdictions from adopted plans and studies

Cost by investment category

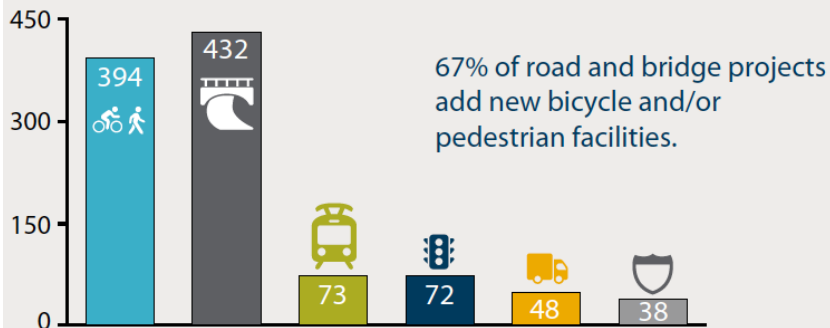
in rounded billions, 2016 dollars

Summary of all capital projects submitted for evaluation and public review. Road and transit operations and maintenance costs to be added.

Total: **\$21.4 billion**



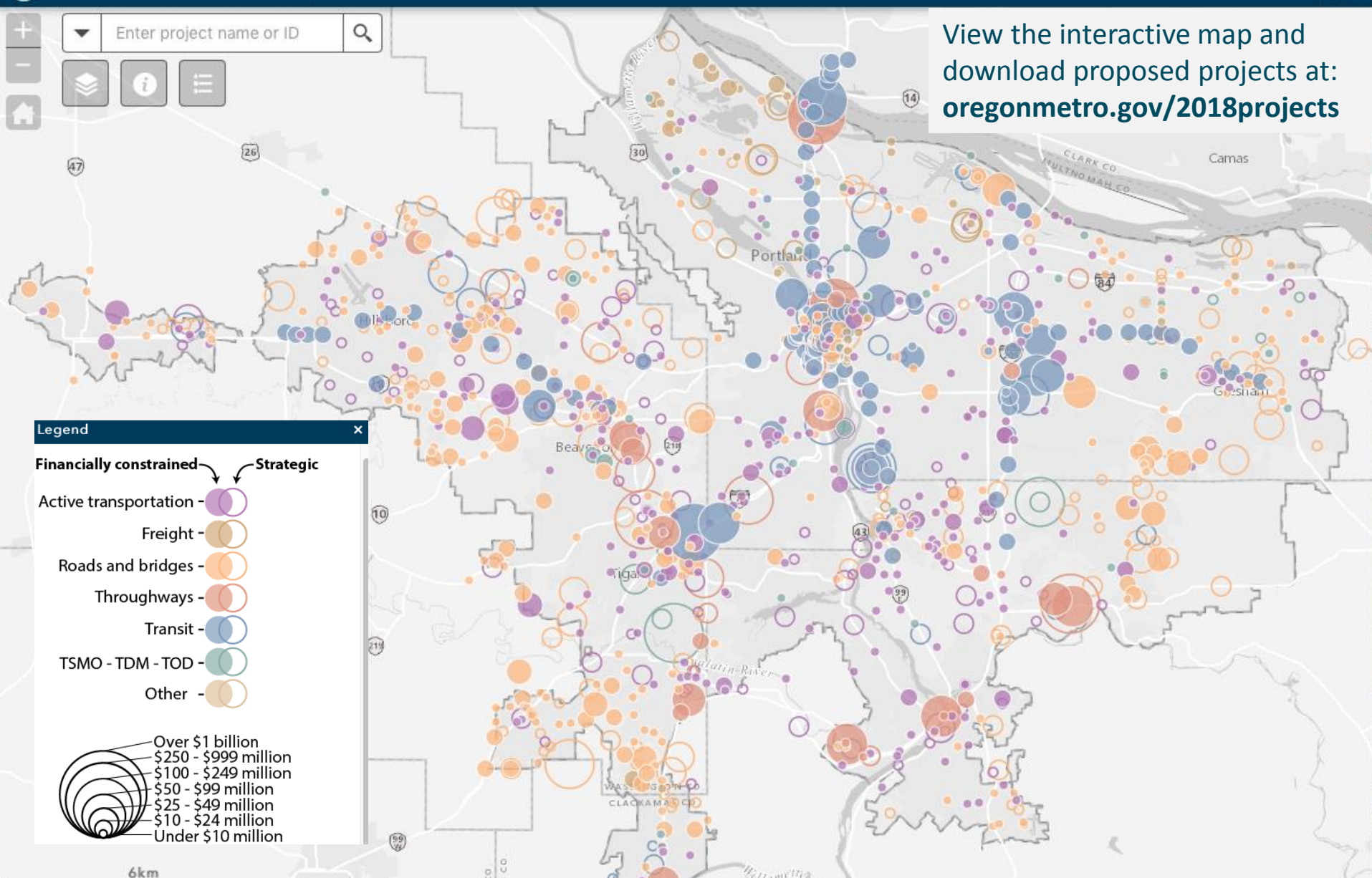
Projects by investment category



Capital investments



View the interactive map and download proposed projects at:
oregonmetro.gov/2018projects



More than than \$21 billion proposed for investment from 2018-2040

Measuring RTP desired outcomes

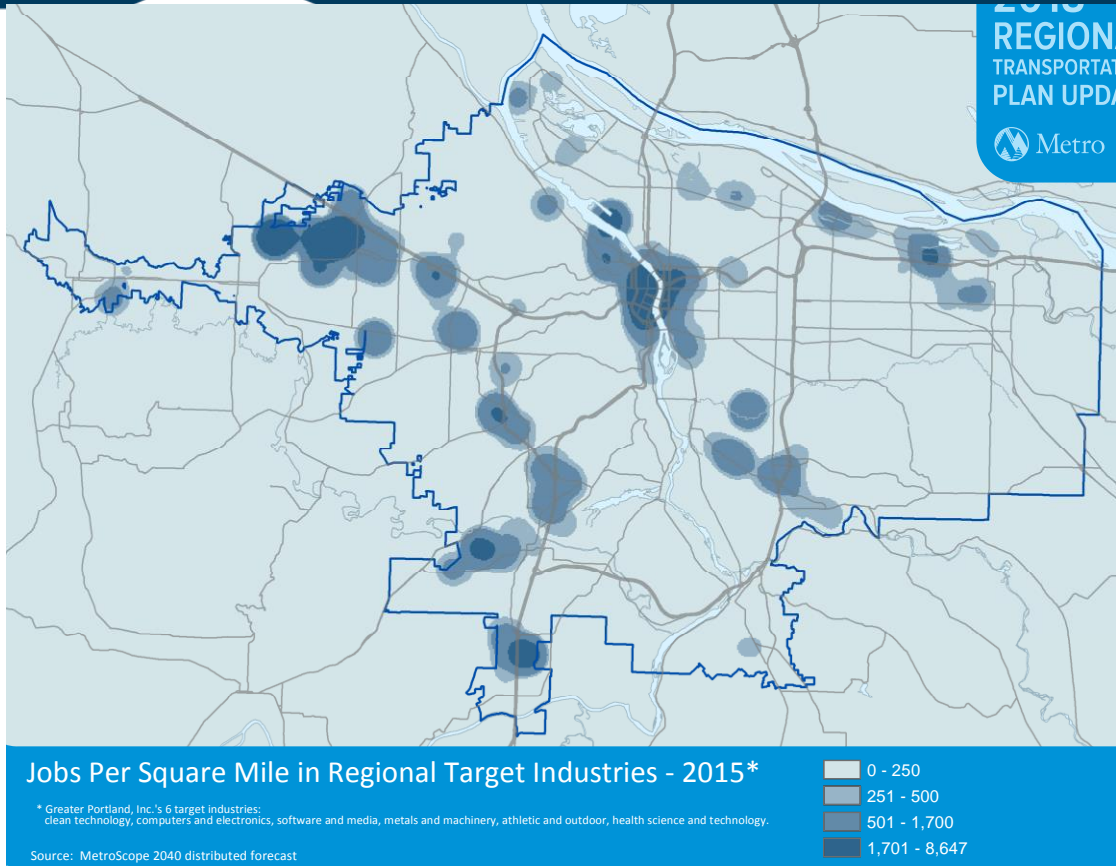
New and existing measures assess how draft investment strategy aligns with RTP goals:

- System-level evaluation
(all projects)
- Transportation equity analysis*
(all projects)
- Project-level evaluation pilot
(48 projects)



* Transportation equity to be measured across multiple outcomes to support federally-required Title VI and Environmental Justice Analysis.

Project evaluation criteria examples...



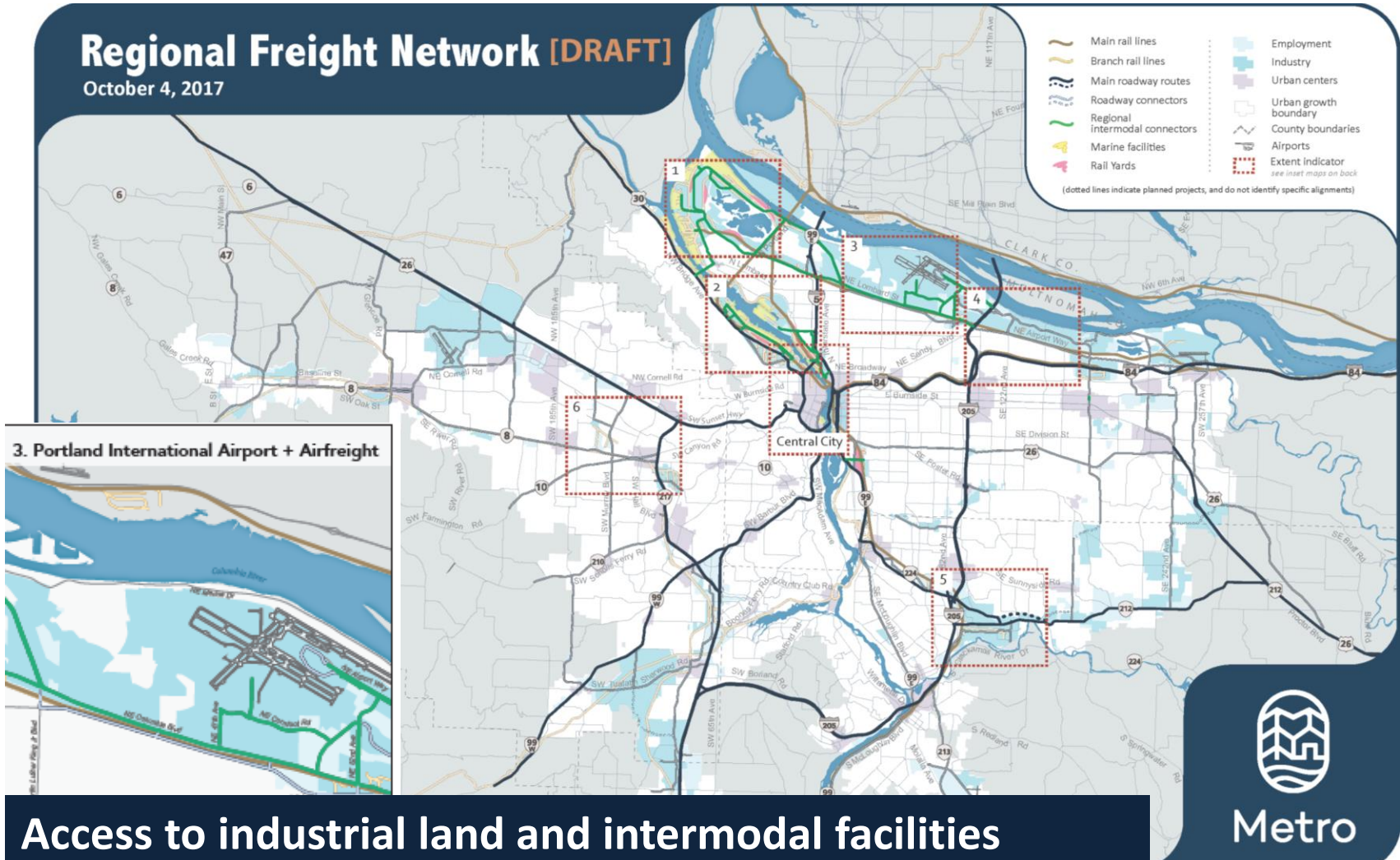
6. JOBS AND ECONOMIC DEVELOPMENT | 10 points

This measure addresses the extent to which projects support existing and new businesses, and job creation by improving access to jobs, targeted industries and priority industrial lands.

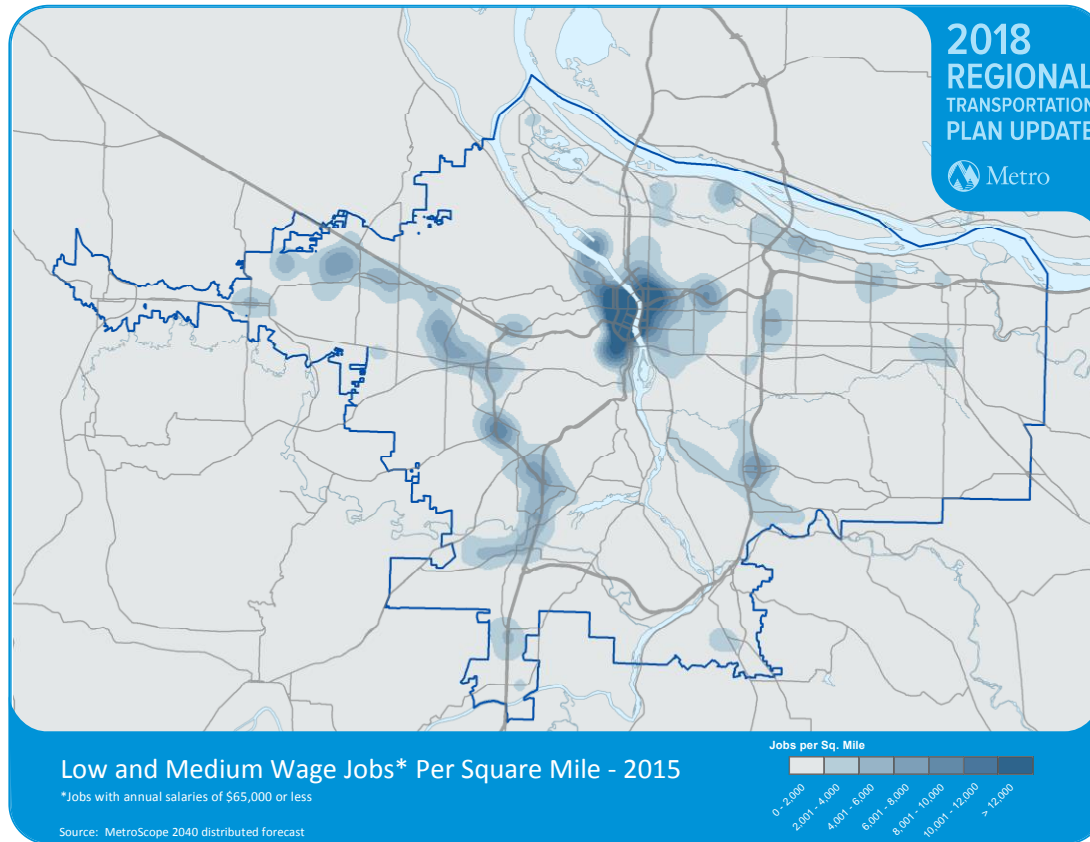
| | | | |
|-------------------------|---|---|--|
| | Purpose: Improve access to areas of high job concentration. How well does the project improve access to jobs (e.g., census tracts with large job concentrations)? ²⁶ | | |
| | Choose one | 4 | The project improves access to an area with a high number of jobs per square mile (>35,000 jobs). |
| | | 3 | The project improves access to an area with a moderate number of jobs per square mile (10,001-35,000 jobs). |
| | | 1 | The project improves access to an area with a base threshold of 2,001 jobs per square mile. |
| | Purpose: Improve access to targeted industries. How well does the project support job retention, expansion or revitalization efforts by improving access to targeted industries (e.g., census tracts with large job concentrations of target industries), including vehicle, transit, biking and walking? ²⁷ | | |
| Points | Choose one | 3 | Project provides new or substantially improved access to an area with a high number of jobs per square mile (>1,700 jobs) in regional target industries. ²⁸ |
| | | 2 | Project provides new or substantially improved access to an area with a moderate number of jobs per square mile (501-1,700 jobs) in regional target industries OR a high number of jobs per square mile (>1,700 jobs) in local/other target industries. ²⁹ |
| | | 1 | Project provides improved access to an area with at least 251 jobs per square mile in regional target industries OR a moderate number of jobs per square mile (500-1,700 jobs) in local/other target industries. |
| | Purpose: Improve access to priority industrial lands. How well does the project support job retention, expansion or revitalization efforts by improving access to regional priority industrial lands or improve market readiness and redevelopment potential of Tier 1, Tier 2 or Tier 3 regional industrial sites and areas? | | |
| | Choose one | 3 | Project improves access to Title 4 Regionally Significant Industrial Areas OR other state or regional priority industrial sites. ³⁰ |
| | | 2 | Project improves access to Title 4 Industrial Areas. ³¹ |
| | | 1 | Project improves access to Title 4 Employment Areas. ³² |
| 10 points maximum score | | | |

Access to GP2020 targeted industries

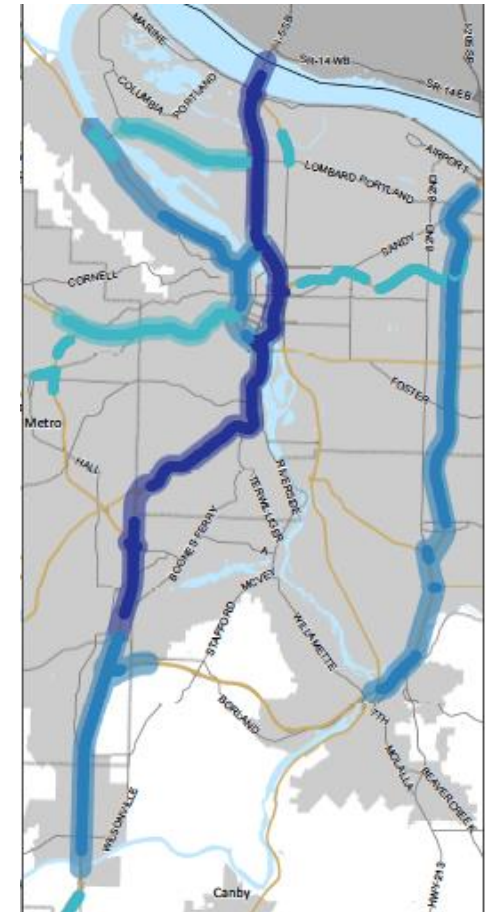
...Project evaluation criteria examples...



...Project evaluation criteria examples

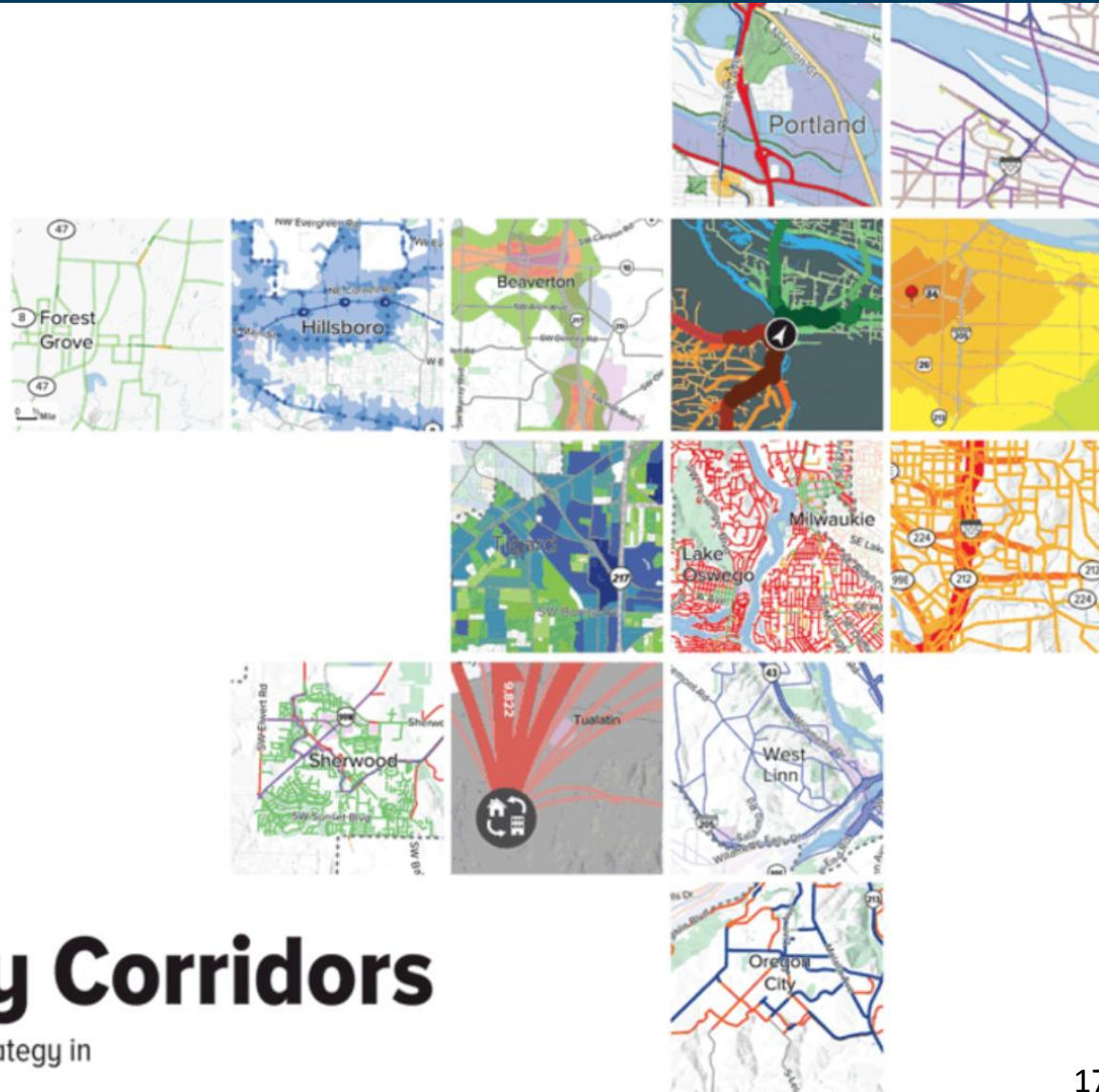


Access to low and middle income jobs



Freight delay areas

Tracking RTP desired outcomes



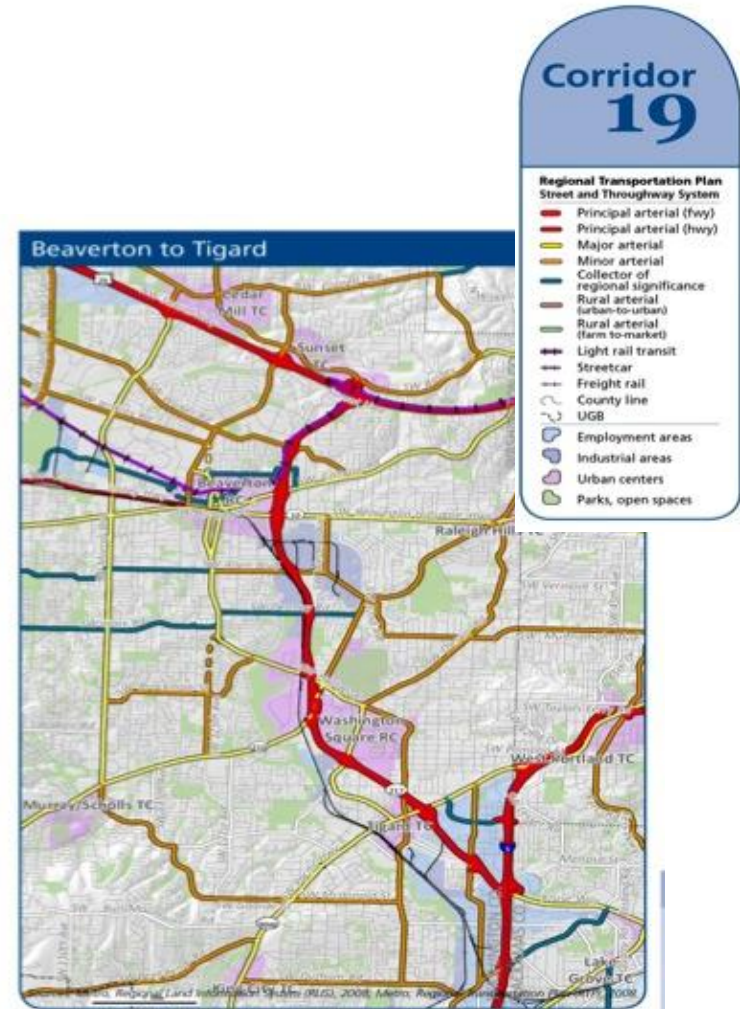
Atlas of Mobility Corridors

A foundation for building an integrated mobility strategy in the Portland metropolitan region

Regional mobility corridors framework

Atlas of 24 mobility corridors displays existing conditions

- *Transportation facilities*
- *Planned land uses (including jobs)*
- *Roadway safety and congestion*
- *Transit coverage and service frequencies*
- *Freight truck volumes and travel times*
- *Bikeway and sidewalk gaps*



Tracking RTP desired outcomes

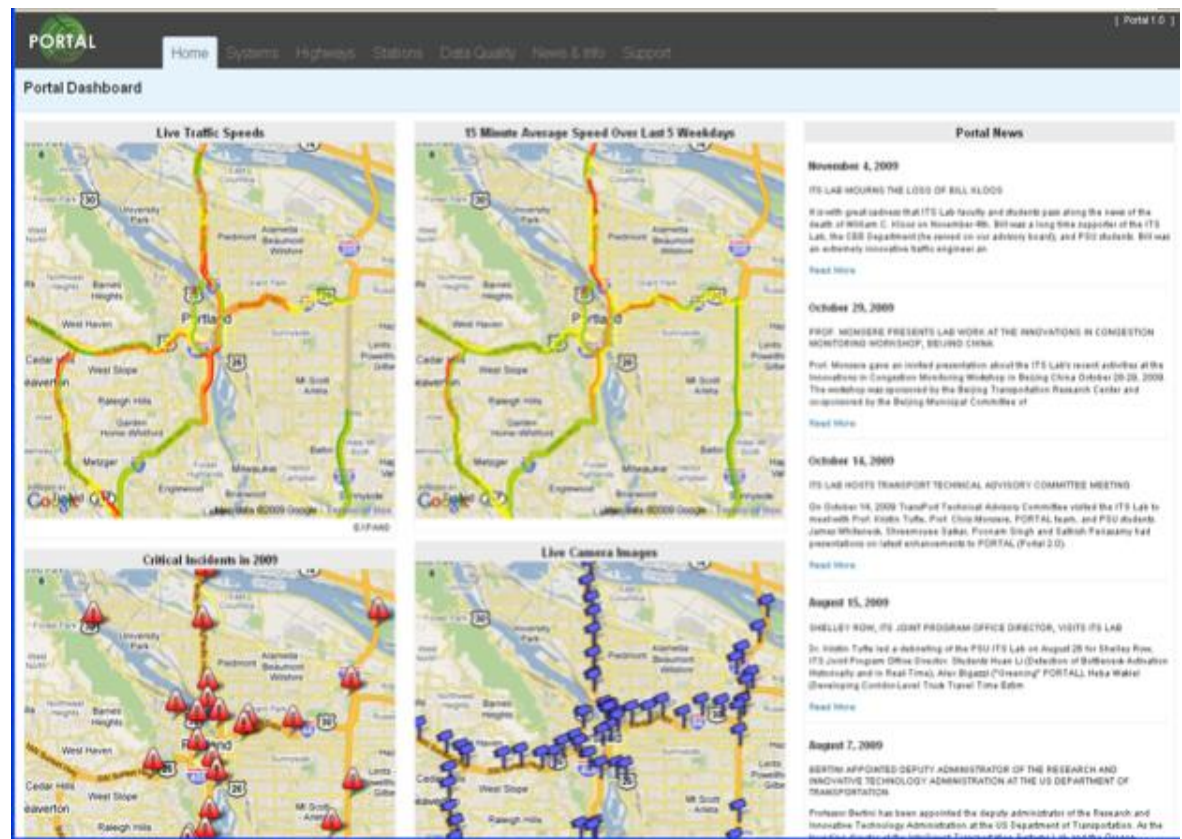
PORTAL Regional Transportation Data Set

Extensive

- *Freeway activity data*
- *Incident data*
- *Safety data*
- *Weigh in-motion data*

Growing

- *Transit data*
- *Arterial data*
- *Bike count data*
- *Pedestrian count data*



Housed and managed at Portland State University

Areas for future engagement and discussion



Climate Smart Strategy implementation

Advancing equity

Regional Safety Strategy

Regional Transit Strategy

Regional Freight Strategy

Emerging technologies (RTX)

Investment priorities for major travel corridors

- Planning
- Capital investments and transit service
- Operational and management strategies

Funding

Measuring and tracking desired outcomes

Upcoming engagement activities

Project website

Briefings

Online poll

Community leaders forum

Regional leadership forum

Business outreach

Social media

Newsfeeds and e-news



Questions and discussion



THANK YOU!

oregonmetro.gov/rtp

Kim Ellis, RTP Project Manager

503-797-1617

Kim.ellis@oregonmetro.gov

