



Handouts

- Big Backyard
- RTP handout
- Regional Snapshot infographic
- Solid Waste Roadmap handout
- Food scraps Q&A for elected officials
- Regional Waste Plan handout

Last quarter's updates: Beaverton 2/21; Forest Grove 2/27; Cornelius 3/6; Hillsboro 3/21

This quarter's updates: Cornelius 8/7; Beaverton 8/8; Forest Grove 8/14

Parks & Nature

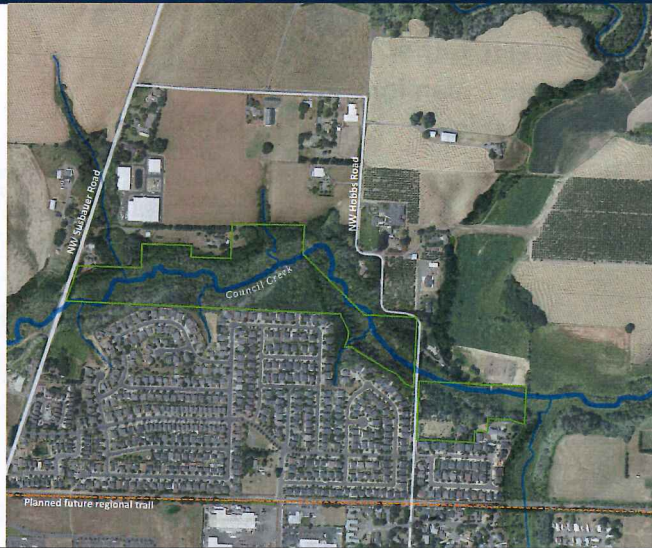
- Farmington Paddle Launch opened June 24
- Planning continuing for Newell Creek Canyon
- Killin Wetlands should open to the public in 2018



- Metro celebrated the opening of **Farmington Paddle Launch** on June 24 in partnership with Clean Water Services and Tualatin Riverkeepers. Farmington Paddle Launch provides a safe place for paddlers to access the Tualatin River and completes a long-missing piece of the Tualatin River Water Trail.
- Metro planners are working to obtain permits and to prepare for construction at **Newell Creek Canyon**, a future nature park in Oregon City that could open as early as fall 2018.
- Work continues on **Killin Wetlands**, a popular spot for birders near Banks, that could open to the public in early 2018. Metro is working to find a contractor to begin construction this year.
- And we continue our work on **Chehalem Ridge**, a 1,200-acre about 15 minutes south of Forest Grove and Cornelius. Over the past year and a half, we've heard from more than 5K community members interested in protecting clean water, restoring wildlife habitat, and finding ways to access nature. The public will get a chance to weigh in on the draft master plan later this summer, and the Metro Council is expected to consider the plan this fall. On
- Saturday, September 23 starting at 10 AM, our Nature Education team will be leading our tour to learn about the geology of Chehalem Ride, and we'll also be continuing our partnership with Centro Cultural de Washington County who will be leading additional site tours later this summer. You can learn about the project and tour opportunities at www.oregonmetro.gov/public-projects/chehalem-ridge-nature-park

East Council Creek

Working to protect the Tualatin watershed and an important natural area right next to Cornelius.



- Finally, we're excited to partner with the City of Cornelius to plan for public access at East Council Creek Natural Area, a 33-acre site on the northern edge of Cornelius with wetlands, floodplains and forest along Council Creek.
- Visitor improvements will likely include a welcoming entry, picnic areas, nature trails, interpretive features and a way for people to experience East Council Creek. We'll also continue to protect clean water and healthy habitat at the site.
- Metro's Connect with Nature initiative is an important part of the planning for East Council Creek. It's part of our efforts to make Metro destinations more welcoming for diverse communities and to create a new model for parks planning that is more inclusive. As part of our work to incorporate equity in parks planning, we'll be partnering with Centro Cultural to lead tours of the site in the coming months.
- Look for another open house some time later this summer. You can sign up to receive notices of meetings and also take our opinion survey at <http://www.oregonmetro.gov/public-projects/east-council-creek>.

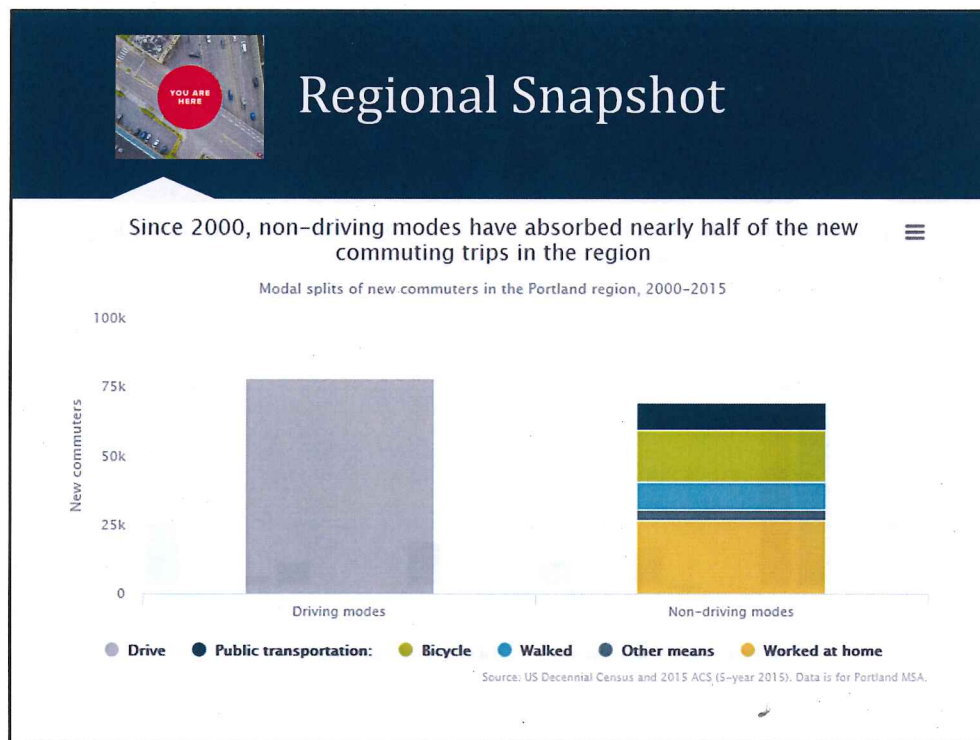
Regional Transportation Plan

Working together
to create a plan for
safe, reliable,
healthy and
affordable
commutes.



Next steps:

- **Call for projects** from cities, counties and agencies wrapped up July 21
- Metro conducts initial technical **evaluation** of draft project priorities (through December)
- **Public weighs in** on the draft project lists and evaluation's key findings (January)
- **Regional Leadership Forum** to discuss findings, update policies, refine funding information, and public input to provide direction on refinements to project priorities (February)
- Cities and counties work with other agencies to recommend additional **refinements** to project priorities (March through April)



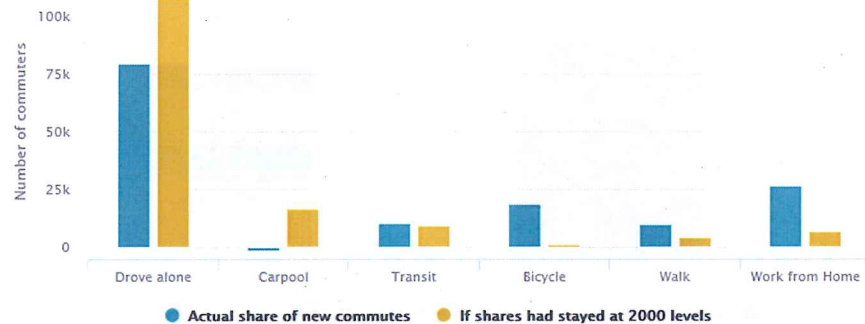
- Our current Regional Snapshot covers transportation.
- Our ability to get around – to cross bridges, travel highways and streets, catch a bus or MAX, walk or bike – is something we often take for granted.
- But as we grow and greet a changing world, how can we ensure the region's streets, roads, transit and bridges still work for everyone?
- Our summer Regional Snapshot takes a look at what makes our transportation system work - and what we can do better.
- As usual, on our website there is a lot of data and also personal stories that really get to the heart of what's happening in our region.
- I brought two interesting examples for you. This slide demonstrates that there is a lot of traffic that could be on the roads, but isn't, due to our work on providing transportation choices.



Regional Snapshot

If new commuters drove at the same rates as in 2000, greater Portland would have 47,000 more cars commuting.

Increase in regional commute trips since 2000, based on actual 2015 shares (blue) and 2000 rates (orange)



Data for Portland 7-county MSA, US Census and 2015 ACS 5-year estimates. Credit: Roger Geller/City of Portland for concept.

- Even with our good work on travel options, roughly 78,000 new drivers have joined area roadways for each day's commute – squeezing through the same chokepoints and bottlenecks, spilling onto neighborhood streets and slowing buses. And that affects us all.
- I encourage you to check out Metro's website to take a look at the rich data and storytelling available in this Regional Snapshot at <http://www.oregonmetro.gov/regional-snapshots>

Solid Waste Roadmap



•As you know, Metro is considering multiple moving parts of our solid waste system under a work program we call the Solid Waste Roadmap. The goal is to have a compressive look at the system, to consider new technologies, and to increase the public benefits of our regional system. Three of those projects have upcoming milestones.

•current contract that requires 90% of the region's waste to go to Waste Management expires the end of 2019.

Landfill and transport RFPs

•Starting in 2020, 40% of the region's garbage will flow through the two transfer stations owned by the public; the remaining 60% will continue to flow through private transfer stations.

•Metro is preparing its RFPs for landfill and transport contracts for the 40% of garbage that will flow through the public transfer stations.

•This fall the public can weigh in on those draft RFPs for the landfill and transport contracts.

Waste to Energy

•We've also been looking at whether waste-to-energy makes sense for part of region's waste, particularly for its diversion, environmental and health benefits.

•We've had significant stakeholder engagement and conducted a Health Impact Statement.

Commercial food scraps

•Metro is working on its policy proposal for requiring businesses that generate food scraps to separate the scraps from garbage.

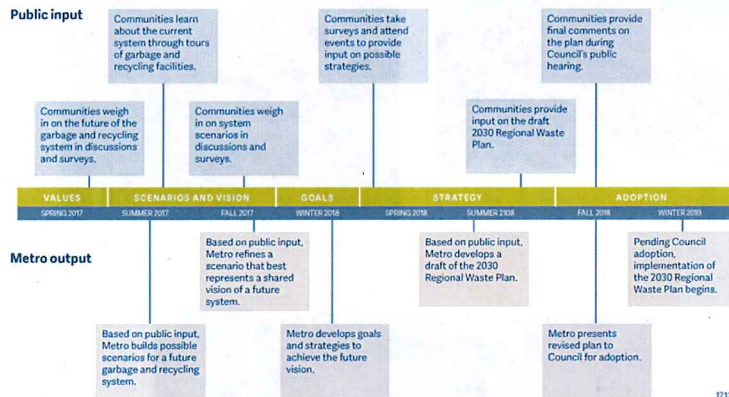
•This program will be phased in based on the size of the business and will divert a significant amount of food waste from going into landfills

•The draft policy proposal will be available public comment this summer and consideration by Metro Council this fall

•You can learn more about these projects and how to weigh in at <http://www.oregonmetro.gov/public-projects/future-garbage-and-recycling/food-scraps>

2030 Regional Waste Plan

Developing the Regional Waste Plan



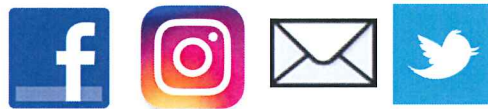
- The 2030 Regional Waste Plan Metro is the blueprint that guides how the region handles and transports our garbage.
- The process will also include detailed technical analysis and the development of strategies for advancing the region as a leader in the protection of natural resources.
- The 2030 plan includes a vision for reducing the overall impacts of goods consumed in the region; policies to help ensure equity in the system; goals for achieving what residents want; and actions to accomplish those goals and ways to measure progress.
- Metro is working with a range of committees and communities around the region to ensure the next Regional Waste Plan reflects the values and priorities of residents across the region.
- To weigh in or learn more, visit <http://www.oregonmetro.gov/public-projects/future-garbage-and-recycling/system-blueprint>

Key dates

- September 2017: Metro Council endorses system vision.
- November 2017: Metro Council, MPAC and SWAAC review draft system goals and indicators.
- July 2018: Metro Council, MPAC and SWAAC review draft strategies and actions.
- October 2018: Metro Council considers adoption of 2030 Regional Waste Plan

Your questions

Kathryn Harrington
Metro Councilor, District 4
503-797-1553
kathryn.harrington@oregonmetro.gov



www.oregonmetro.gov/connect



Metro

Arts and conference centers
Garbage and recycling
Land and transportation
Oregon Zoo
Parks and nature

oregonmetro.gov