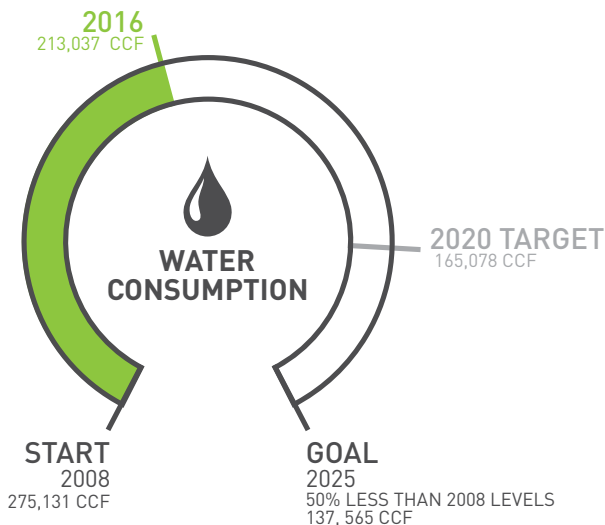
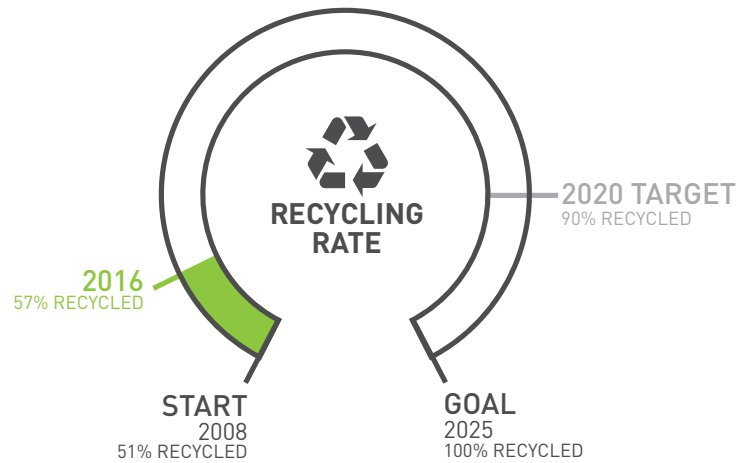
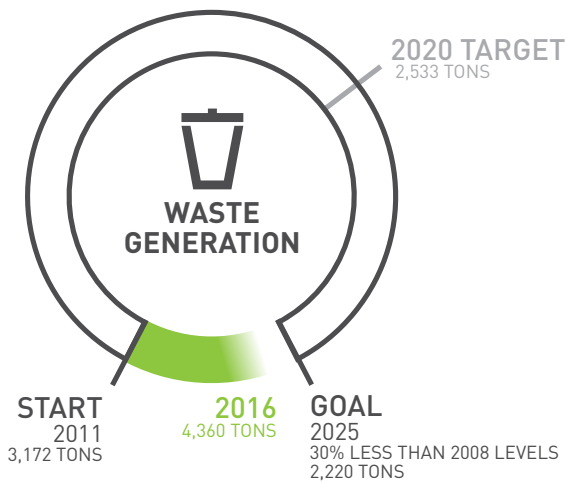
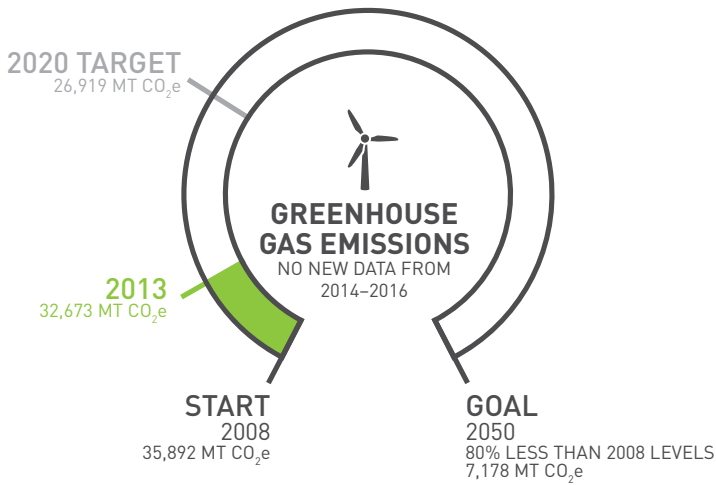


SUSTAINABILITY SCORECARD

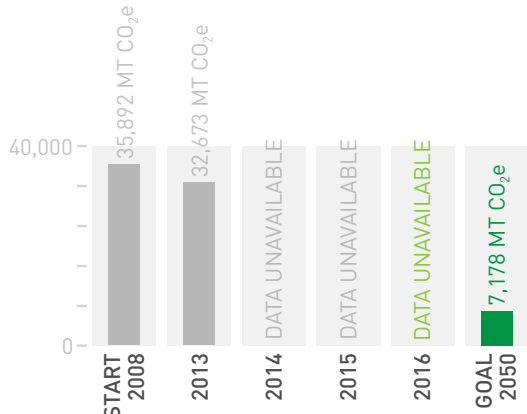


greenMetro

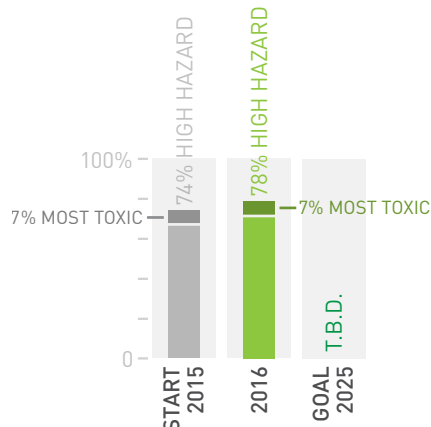
www.oregonmetro.gov/greenmetro

MT CO₂e: Metric tons carbon dioxide equivalent
CCF: Hundred cubic feet, equivalent to 748 gallons
EIA: Effective impervious area

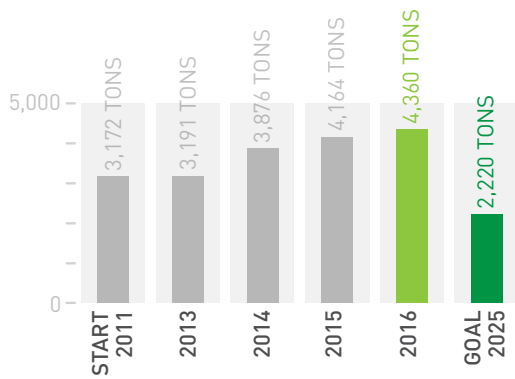
SUSTAINABILITY SCORECARD



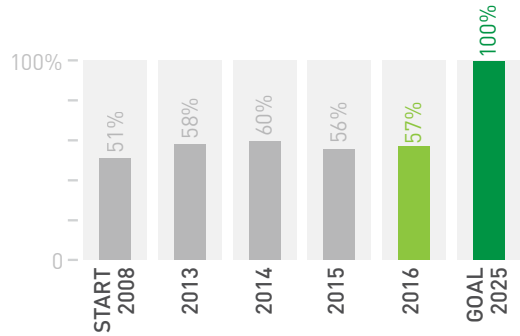
GREENHOUSE GAS EMISSIONS



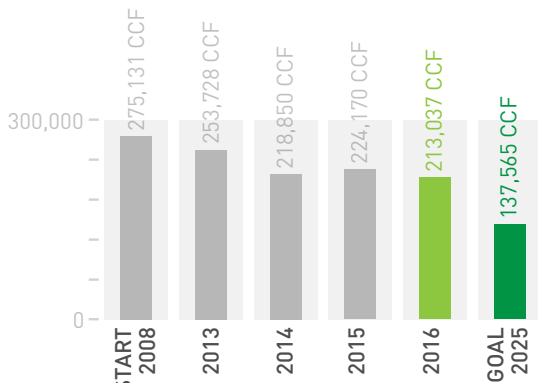
TOXIC INVENTORY



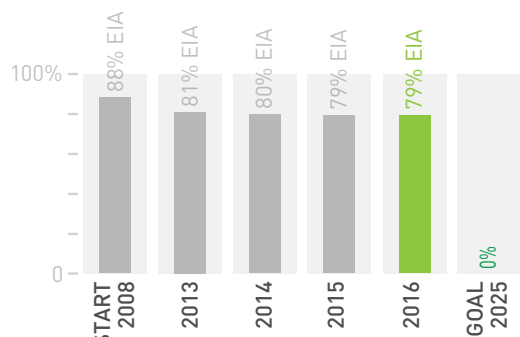
WASTE GENERATION



RECYCLING RATE



WATER CONSUMPTION



EFFECTIVE IMPERVIOUS AREA

greenMetro

www.oregonmetro.gov/greenmetro

MT CO₂e: Metric tons carbon dioxide equivalent
 CCF: Hundred cubic feet, equivalent to 748 gallons
 EIA: Effective impervious area