

ATTACHMENT A

SITE PLAN

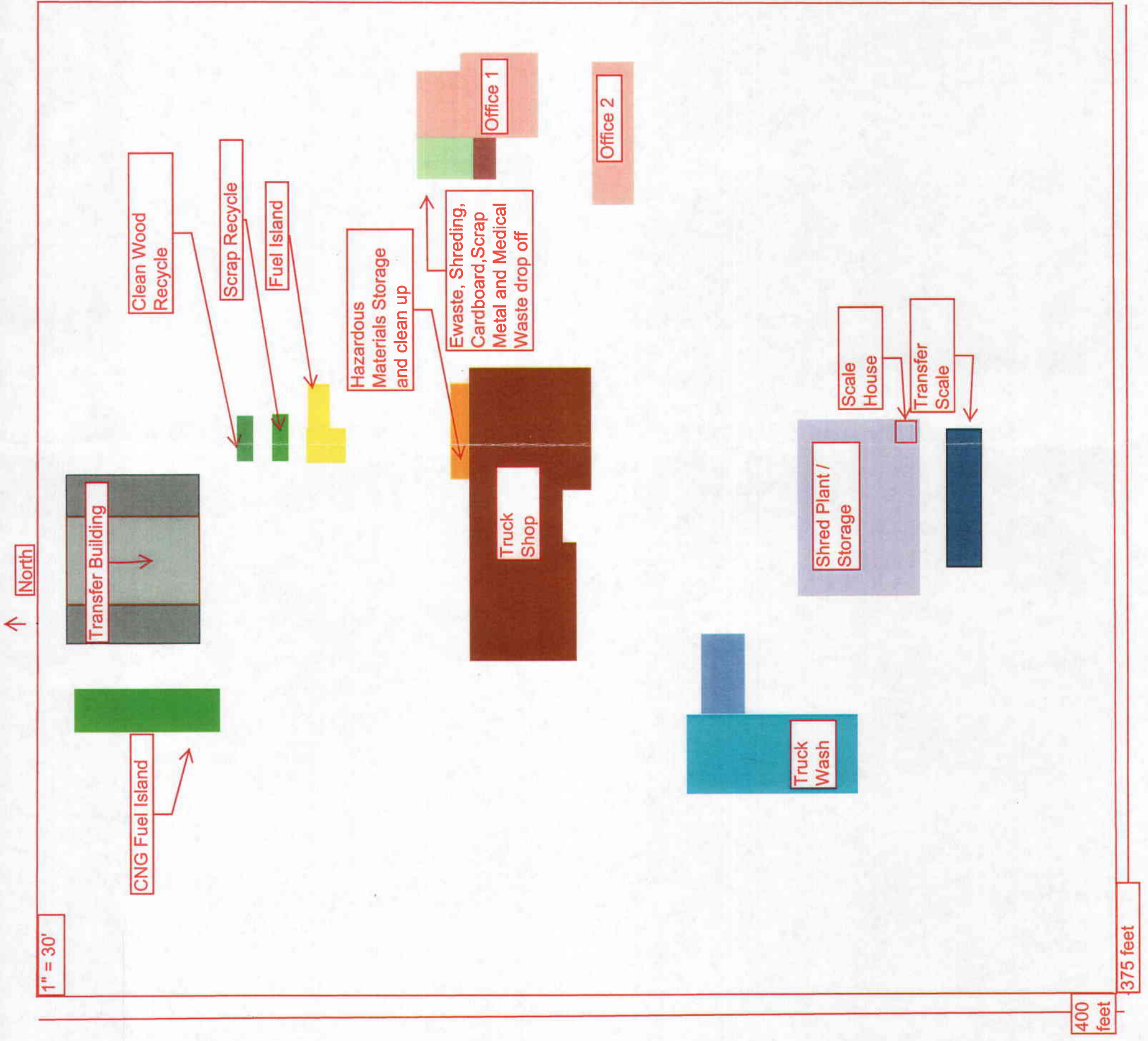
GSS Transfer, LLC.

A division of Gresham Sanitary Service, Inc.

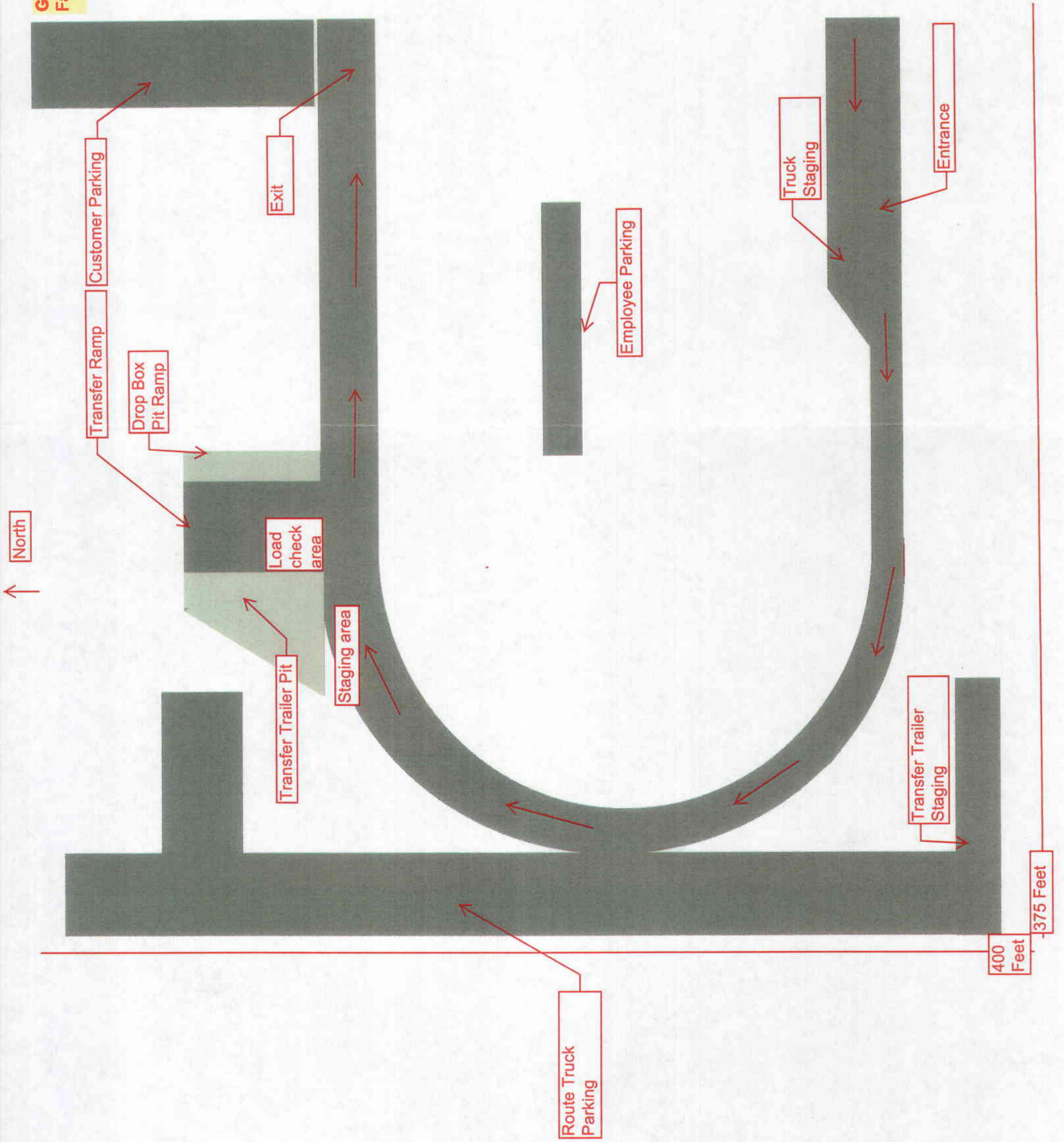


**2131 NW Birdsdale Ave.
Gresham OR. 97030**

GSS TRANSFER LLC.
 ATTACHMENT A
 SITE PLAN
 FACILITY OVERVIEW



GSS TRANSFER LLC.
Facility Traffic Flow



↑ North

1" = 30'

Perimeter fence

Exit gate

Pedestrian gate

Entrance gate

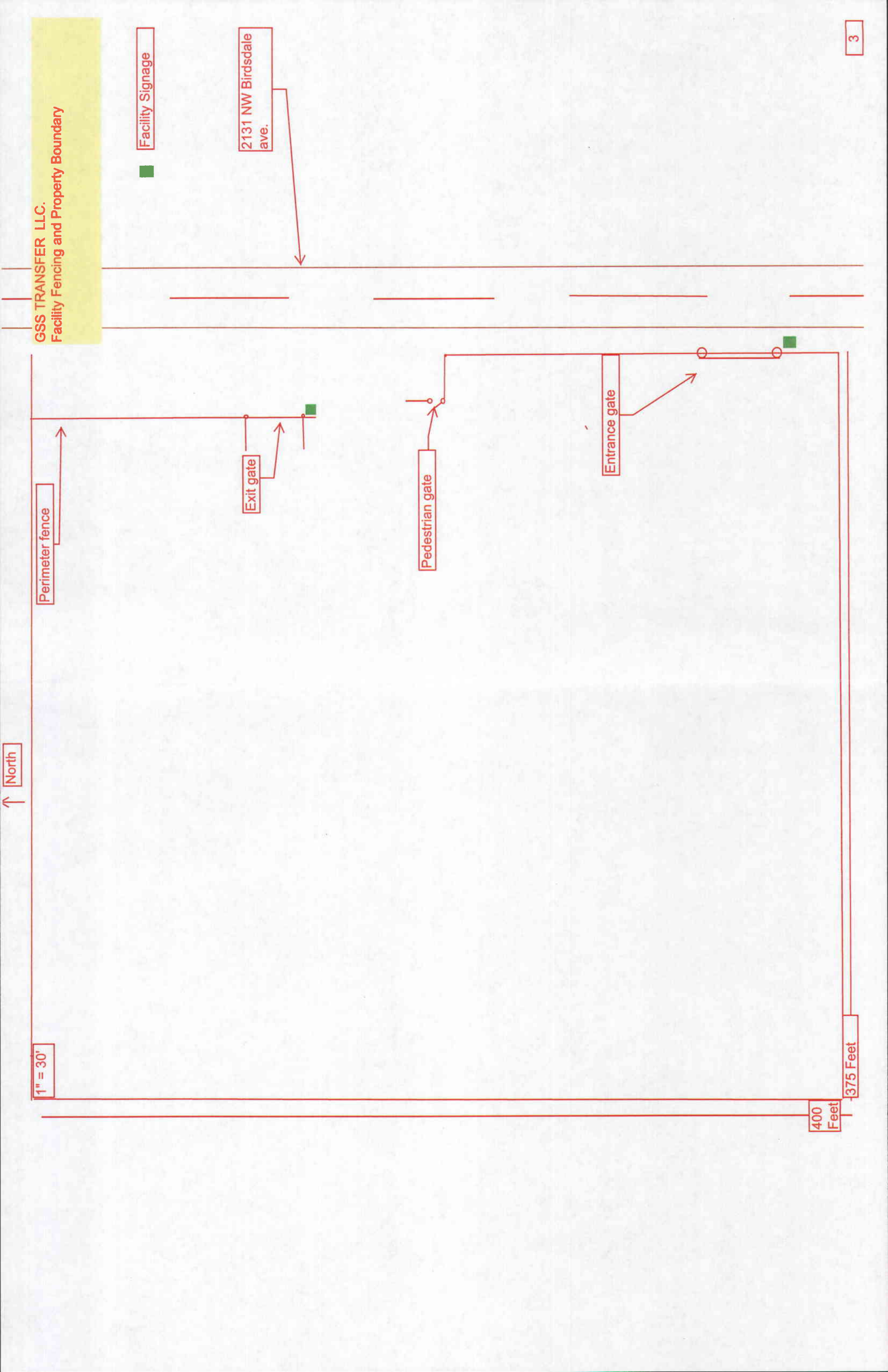
Facility Signage

2131 NW Birdsdale
ave.

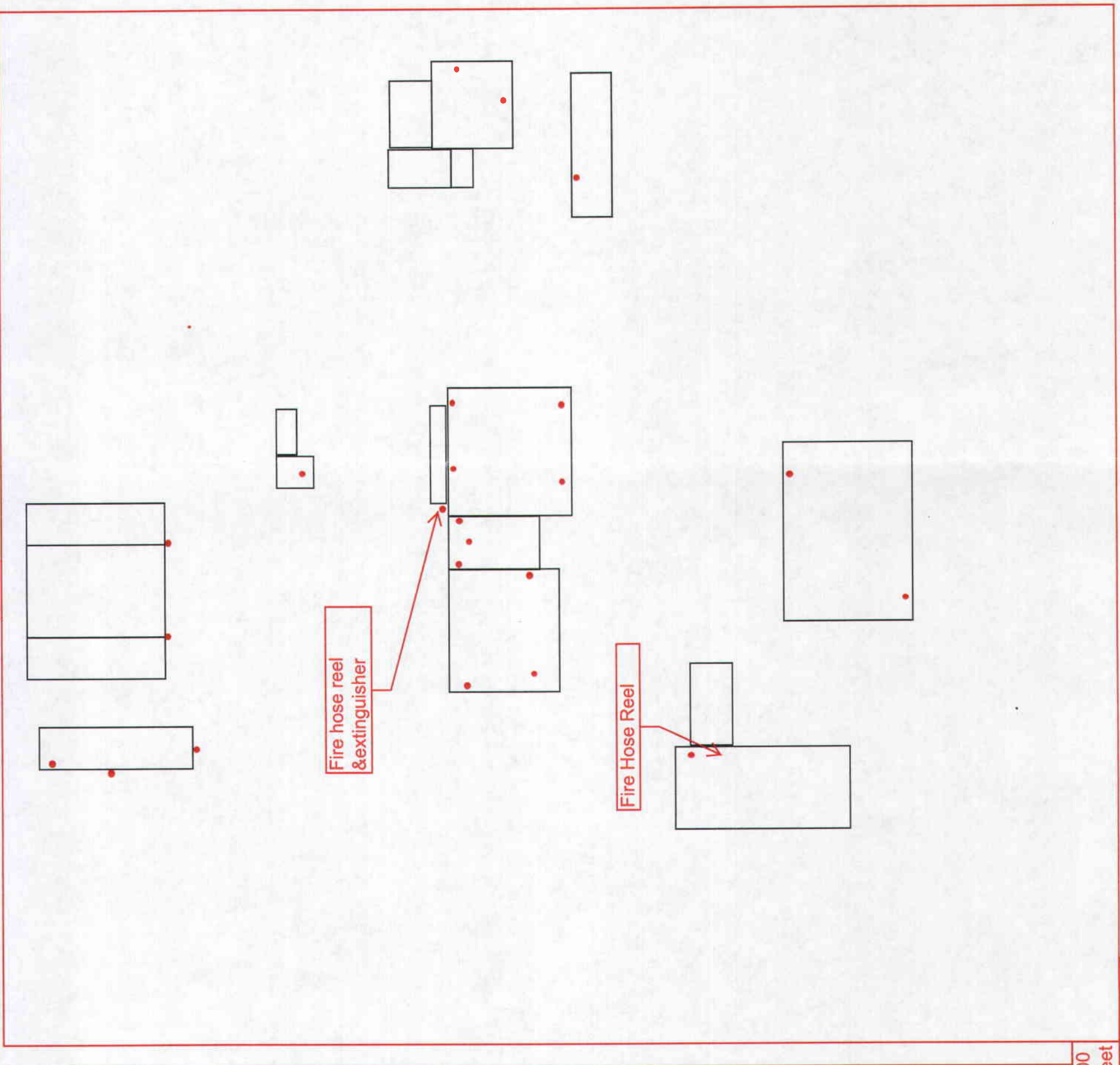
GSS TRANSFER LLC.
Facility Fencing and Property Boundary

400
Feet

375 Feet



North
↑

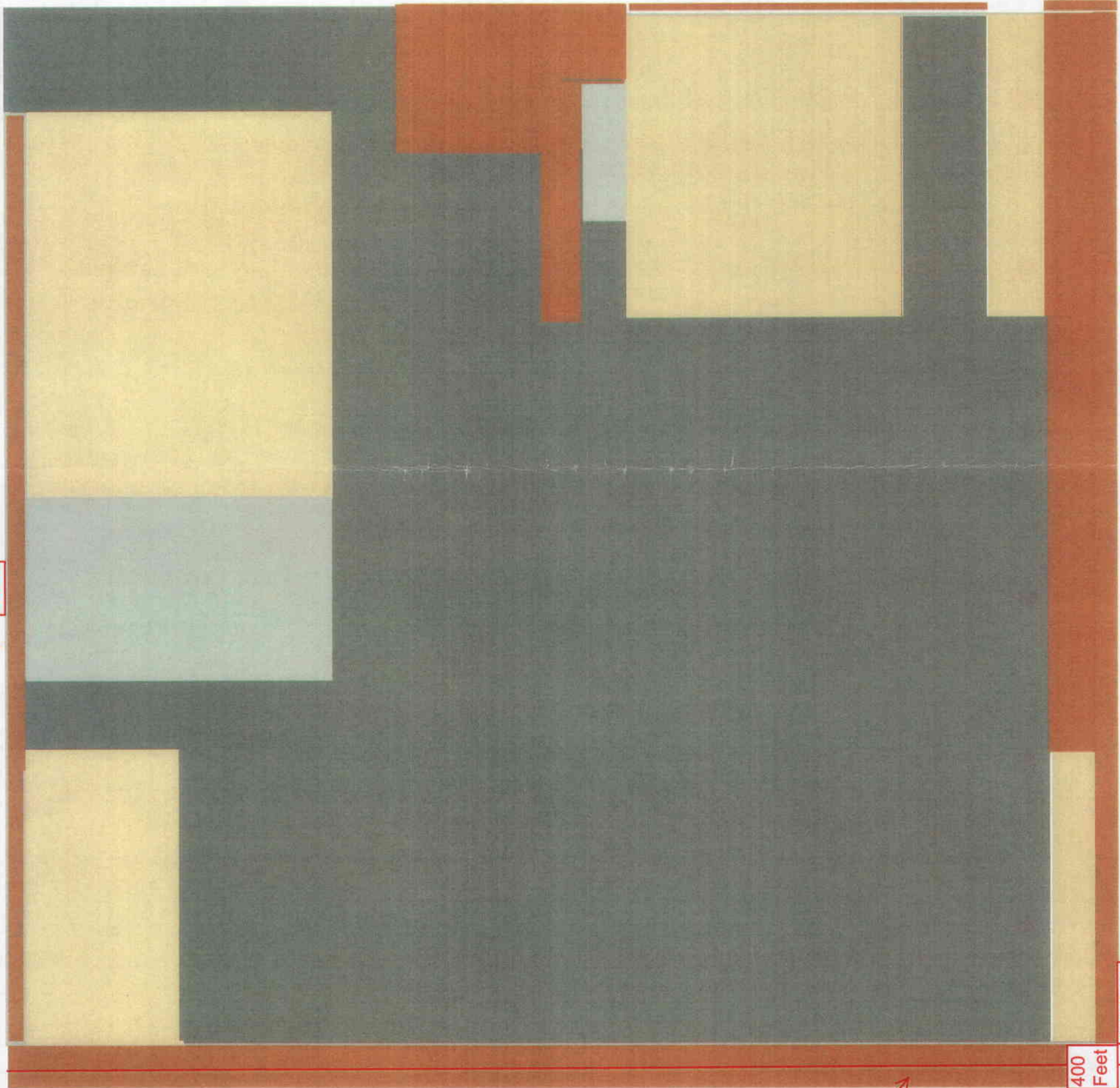


400
Feet

375 Feet

GSS TRANSFER LLC.
Facility Paving and Vegetative Buffer

↑ North



- Vegetative Buffer
- Paved Areas
- Gravel Areas
- Concrete Areas

Vegetative Buffer Exemption
from City of Gresham for
Fairview/Spring Water trail
land acquisition

400
Feet

375 Feet