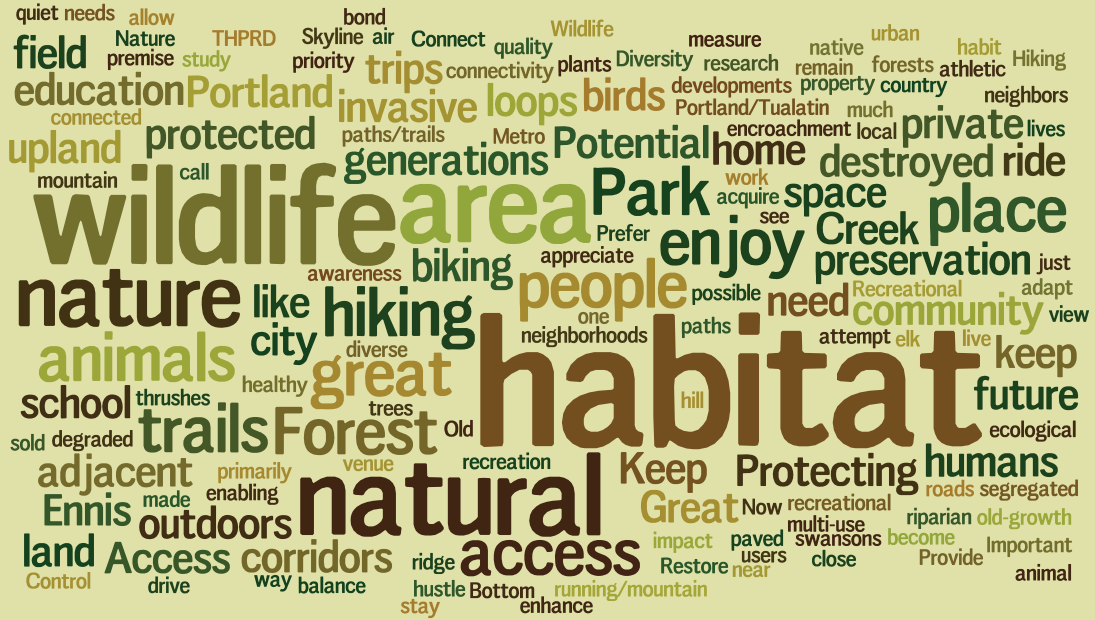


NORTH TUALATIN MOUNTAINS

WHAT WE HEARD

WHAT IS IMPORTANT TO YOU ABOUT THE NORTH TUALATIN MOUNTAINS?



WHAT DO YOU WANT TO DO AT THE NORTH TUALATIN MOUNTAINS?



NORTH TUALATIN MOUNTAINS HABITAT AREAS

BURLINGTON CREEK FOREST

Burlington Creek

The Burlington Creek Forest is adjacent to the Ancient forest preserve, owned and managed by the Forest Park Conservancy. The only access to the Ancient Forest Preserve is from McNamee Rd. through Burlington Creek Forest.

West McCarthy

The west side of McCarthy has been less disturbed in recent years. The roads on the west side of McCarthy have not been maintained and are in poor condition.

This area provides an opportunity to preserve a large patch of undisturbed habitat with some older forest and riparian connectivity.

McCarthy CREEK FOREST (403 acres)

North Abbey

The North Abbey Cr. forest site is relatively narrow. Stretching from its headwaters at the north end of the site, the North Abbey Creek riparian corridor extends through the length of the site.

Elk are known to use the entire North Abbey site.

The site includes older forest with diverse understory, as well as open areas that provide opportunities for pollinator habitat.

The site has been used for education programs by Trackers Earth and Self Enhancement Inc.

NORTH ABBEY CREEK FOREST (211 acres)

ENNIS CREEK FOREST (350 acres)

South Ennis

At the southern end of Ennis, the forest is older and more diverse with open meadows where elk have been observed.

This area offers potential for future connectivity to Forest Park.

Wealth Underground Farm, a CSA (Community Sustained Agriculture) operates on the south end of the property.

Legend

-  RIPARIAN CORRIDORS AND HEADWATERS
-  ELK AREAS
-  OLDER FOREST
-  POWER LINE
-  CONSERVATION EDUCATION

Conservation Focus

Headwaters and riparian corridors:

Protecting headwaters of McCarthy and North Abbey Creeks as well as the riparian corridors in the North Tualatin Mountains is a priority.

Diverse forests:

Many of the existing forests have been recently cut and are comprised of even aged stands. Restoration of forest diversity, involving selective thinning to release large trees and targeted planting of understory species, will be a focus in upland and riparian forest areas.

Early successional shrub:

Small scale agricultural sites, recently logged areas, and utility clearings are opportunities to manage for early successional upland forest shrubs and oak savannah. Shrub dominated communities provide food and cover for neotropical migrant songbirds and create habitat for a variety of pollinator species. Savannah offers habitat for pollinators and elk herds.

Key undisturbed habitat areas:

It is important to preserve a large swath of unfragmented habitat without trails (several hundred acres is ideal, but may not be feasible on these sites) Elk are known to use many of the areas forests and open areas.

Biodiversity corridors:

Potential biodiversity corridors provide connections through the landscape allowing wildlife to move among sites and habitat anchors.

FOREST PARK

NORTH TUALATIN MOUNTAINS OPPORTUNITY AREAS

BURLINGTON CREEK FOREST (339 acres)

North Burlington

Contained between McNamee Road and the railroad tracks, this area could provide opportunities for shorter loops.

Central Burlington

Forest diversity is a restoration focus in these young even-aged forests. This includes thinning, planting understory plants and planting diverse tree species.

The main access to the Ancient Forest Preserve is from McNamee Rd. This access would require extensive safety improvements to provide a formalized public entry.

ANCIENT FOREST PRESERVE

South Burlington

Although it is adjacent to the Ancient Forest Preserve, this is primarily a young, even-aged forest stand, and will be managed to accelerate development of forest diversity and legacy trees.

The power line road is well maintained and offers views toward Sauvie Island and the Columbia River.

BURLINGTON BOTTOMS

MCCARTHY CREEK (403 acres)

North McCarthy

Open meadows at the top of the ridge provide excellent views of the coast range and Chehalis Ridge, the western edge of the Tualatin Valley. Elk are sometimes seen in these meadows.

Restoration efforts in these open areas include planting Oregon oaks and native shrubs.

An entry off McNamee would require moderate safety improvements to provide a formalized public entry.

South McCarthy

Similar to the forests at Ennis and Burlington, this forest was recently planted, and restoration aims to increase diversity of tree species, age and understory plants.

A formalized public entry from NW Skyline Drive would require modest safety improvements. The area offers potential for a small parking area and entry. NW Kaiser Rd

NORTH ABBEY CREEK FOREST (211 acres)

North Abbey

The North Abbey Creek forest site is relatively narrow. Stretching from its headwaters at the north end of the site, the North Abbey Creek riparian corridor extends through the length of the site. Elk are known to use the entire area.

North Abbey's diverse habitat areas provide a variety of educational opportunities. Self Enhancement Inc. and Trackers Earth have held successful educational programs at North Abbey, and the opportunity exists to continue to host similar programs in the future.

ENNIS CREEK FOREST (350 acres)

North Ennis

Restoration work aims to increase diversity of tree species, age and understory plants by thinning to encourage large healthy trees and planting native understory plants.

Though there are no formal access points, an informal access is used by neighbors to the northeast.

Existing access road along the ridge offers views toward Sauvie Island.

Central Ennis










Restoration work aims to increase diversity of tree species, age and understory plants by thinning to encourage large healthy trees and planting native understory plants.

Access from Newberry Road limited to maintenance vehicles because of steep grades and poor visibility.

Legend

-  RECREATION OPPORTUNITY AREA
-  RIPARIAN CORRIDORS
-  ELK AREAS
-  OLDER FOREST
-  POWER LINE
-  VIEW POINT
-  PRIMARY ACCESS OPPORTUNITY
-  SECONDARY ACCESS OPPORTUNITY
-  MAINTENANCE ACCESS
-  POTENTIAL TRAIL CONNECTION

Activities

-  VOLUNTEERING
-  CONSERVATION EDUCATION
-  NATURE VIEWING
-  SCENIC VIEWING
-  PLAYING
-  PICNICKING
-  HIKING
-  TRAIL RUNNING
-  MOUNTAIN BIKING

NORTH TUALATIN MOUNTAINS BURLINGTON CREEK

Burlington Creek Forest

- 339 acres
- Northeast slopes of Tualatin Mountains
- Adjacent to the Ancient Forest Preserve (managed by the Forest Park Conservancy)
- Forest is primarily a young, even-aged stand of Douglas fir
- Connection to Burlington Bottoms and Multnomah Channel blocked by US 30, residential development, and the railroad along the NE edge of the site
- McNamee Road and the railroad bisect the site
- BPA power line through the site
- Views toward Sauvie Island

Legend

-  RECREATION OPPORTUNITY AREA
-  RIPARIAN CORRIDORS
-  VIEW POINT
-  PRIMARY ACCESS OPPORTUNITY
-  SECONDARY ACCESS OPPORTUNITY
-  POTENTIAL TRAIL CONNECTION

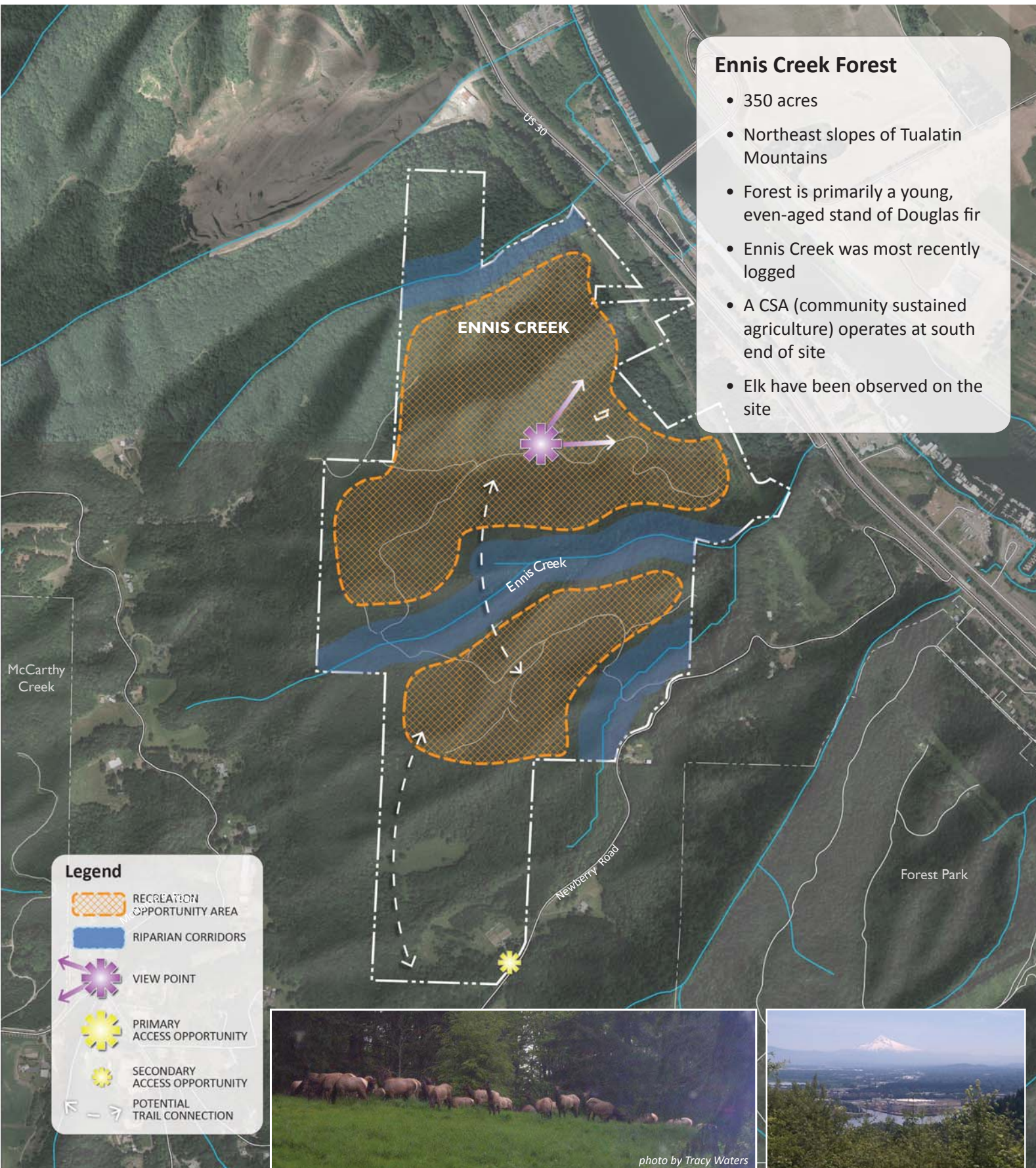


NORTH TUALATIN MOUNTAINS

ENNIS CREEK

Ennis Creek Forest

- 350 acres
- Northeast slopes of Tualatin Mountains
- Forest is primarily a young, even-aged stand of Douglas fir
- Ennis Creek was most recently logged
- A CSA (community sustained agriculture) operates at south end of site
- Elk have been observed on the site



Legend

- RECREATION OPPORTUNITY AREA
- RIPARIAN CORRIDORS
- VIEW POINT
- PRIMARY ACCESS OPPORTUNITY
- SECONDARY ACCESS OPPORTUNITY
- POTENTIAL TRAIL CONNECTION



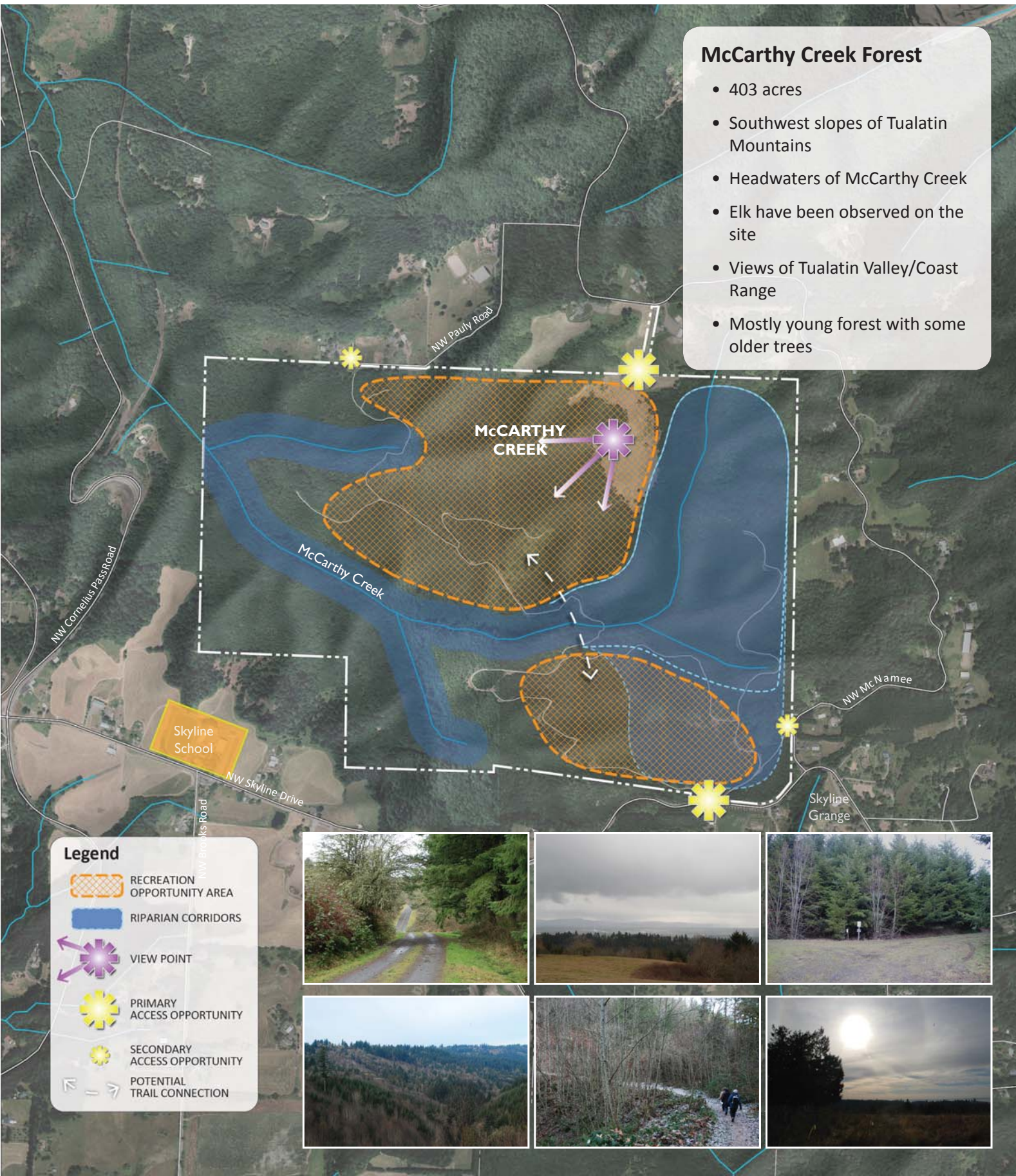
photo by Tracy Waters



NORTH TUALATIN MOUNTAINS MCCARTHY CREEK

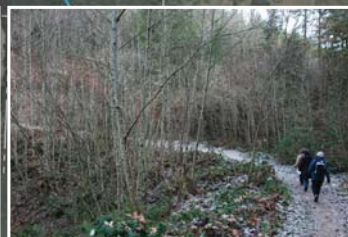
McCarthy Creek Forest

- 403 acres
- Southwest slopes of Tualatin Mountains
- Headwaters of McCarthy Creek
- Elk have been observed on the site
- Views of Tualatin Valley/Coast Range
- Mostly young forest with some older trees



Legend

- RECREATION OPPORTUNITY AREA
- RIPARIAN CORRIDORS
- VIEW POINT
- PRIMARY ACCESS OPPORTUNITY
- SECONDARY ACCESS OPPORTUNITY
- POTENTIAL TRAIL CONNECTION



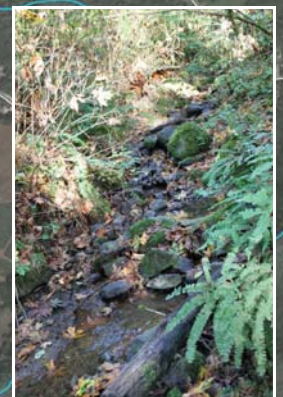
NORTH ABBEY CREEK

North Abbey Creek Forest

- 211 acres
- Southwest slopes of Tualatin Mountains
- Headwaters of North Abbey Creek
- Elk have been observed on the site
- No roads exist in forested area
- Steep canyon at riparian area

Legend

-  RECREATION OPPORTUNITY AREA
-  RIPARIAN CORRIDORS
-  VIEW POINT
-  PRIMARY ACCESS OPPORTUNITY
-  SECONDARY ACCESS OPPORTUNITY
-  POTENTIAL TRAIL CONNECTION



NORTH TUALATIN MOUNTAINS ACTIVITIES

Rank your top 3 activities for the project. Place one dot next to each of your 3 priorities.

1 most important

2 very important

3 important



Volunteer Work



Playing



Trail running



Scenic Viewing



NORTH TUALATIN MOUNTAINS

ACTIVITIES

Rank your top 3 activities for the project. Place one dot next to each of your 3 priorities.

1 most important

2 very important

3 important



Conservation Education



Picnicking



Mountain biking



Horseback riding



NORTH TUALATIN MOUNTAINS ACTIVITIES

Rank your top 3 activities for the project. Place one dot next to each of your 3 priorities.

1 most important

2 very important

3 important



Wildlife Viewing



Hiking



Art



Being in Nature

