

# Lake Oswego Portland

---

**T R A N S I T   A N D  
T R A I L   S T U D Y**

**June 15, 2007**

# **BRT Alternative**



- **Faster and more reliable bus service through the use of transit priority treatments**
- **Signal priority and queue jumps at critical signalized intersections to minimize delay**
- **High-level station amenities such as enhanced shelters, lighting and benches**
- **Operation on Highway 43, generally in mixed-use traffic**

# Streetcar Alternative



- Improves travel time significantly between Lake Oswego and Portland by extending the existing Portland Streetcar from SW Lowell Street (currently under construction) to downtown Lake Oswego
- High-level station amenities such as enhanced shelters, lighting and benches
- Operates on the Willamette Shore Line right of way, SW Macadam Avenue or parts of both
- Mostly single-track design with short double-track sections to improve reliability and travel time

# **No-Build Alternative**

**The No-Build alternative provides a basis for comparison of the build alternatives and only includes highway, pedestrian, bicycle, and transit improvements in the corridor that would be built as identified in the Regional Transportation Plan (RTP) Financially Constrained network for which funding has been identified.**



**BRT Station**



SW Macadam and SW Lowell St.



# Streetcar Station



Willamette Shore Line at SW Hamilton Ct.



Existing



Willamette Shore Line near SW Richardson St.



# Streetcar Without Trail



Willamette Shore Line near SW Richardson St.



# Streetcar With Trail



Willamette Shore Line near SW Richardson St.



# Potential Design Concept



Willamette Shore Line near SW Mitchell St.



# Potential Design Concept



Willamette Shore Line near SW Mitchell St.



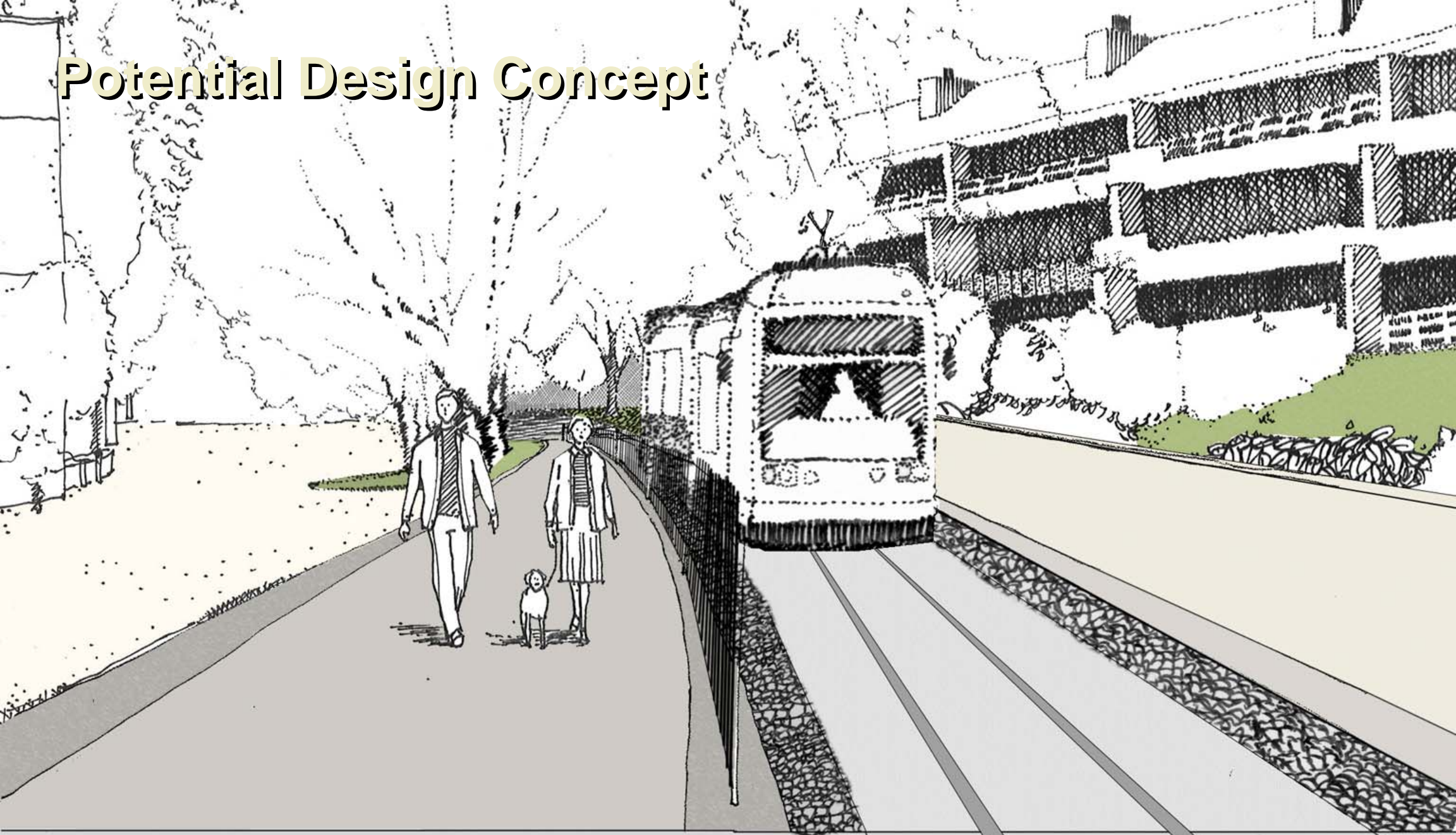
# Potential Design Concept



Willamette Shore Line near SW Mitchell St.



# Potential Design Concept



Willamette Shore Line near SW Mitchell St.



# Streetcar and BRT Stations



SW Boundary St.



Existing



SW Macadam Ave. and SW Boundary St.



# BRT Station



SW Macadam Ave. and SW Boundary St.



# Streetcar Station



SW Macadam Ave. and SW Boundary St.



# Potential Redevelopment Opportunity



SW Macadam Ave. and SW Iowa St.



OR 43

# Potential Redevelopment Opportunity



SW Macadam Ave. and SW Iowa St.





# Potential Redevelopment Opportunity



SW IOWA

OR 43 (MACADAM)

SW Macadam Ave. and SW Iowa St.





# Potential Redevelopment Opportunity



OR 43 (MACADAM)

SW Macadam Ave. and SW Iowa St.





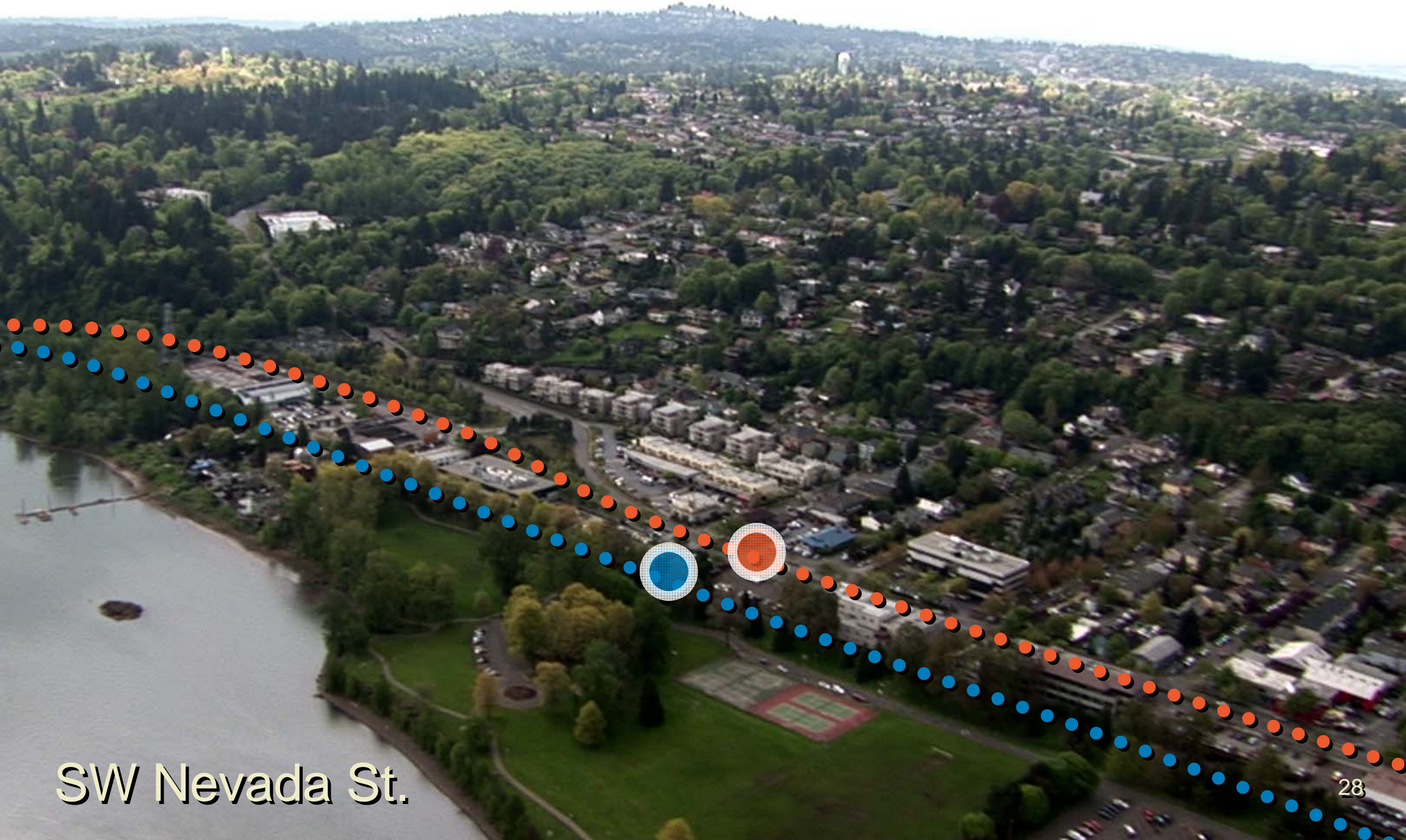
# Streetcar and BRT Stations



SW Nebraska St.



# Streetcar and BRT Stations



SW Nevada St.



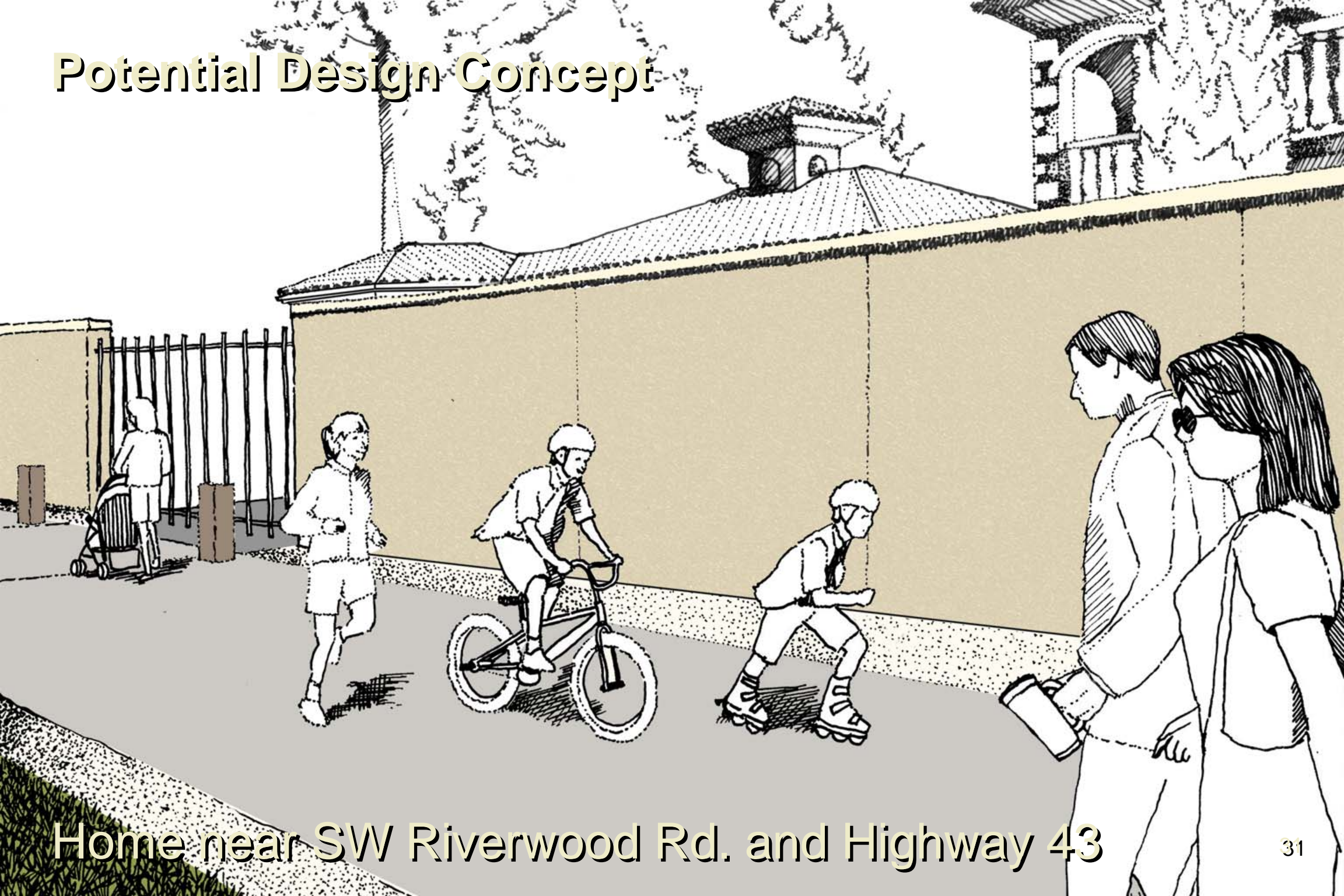
# Streetcar and BRT Stations



Sellwood Bridge



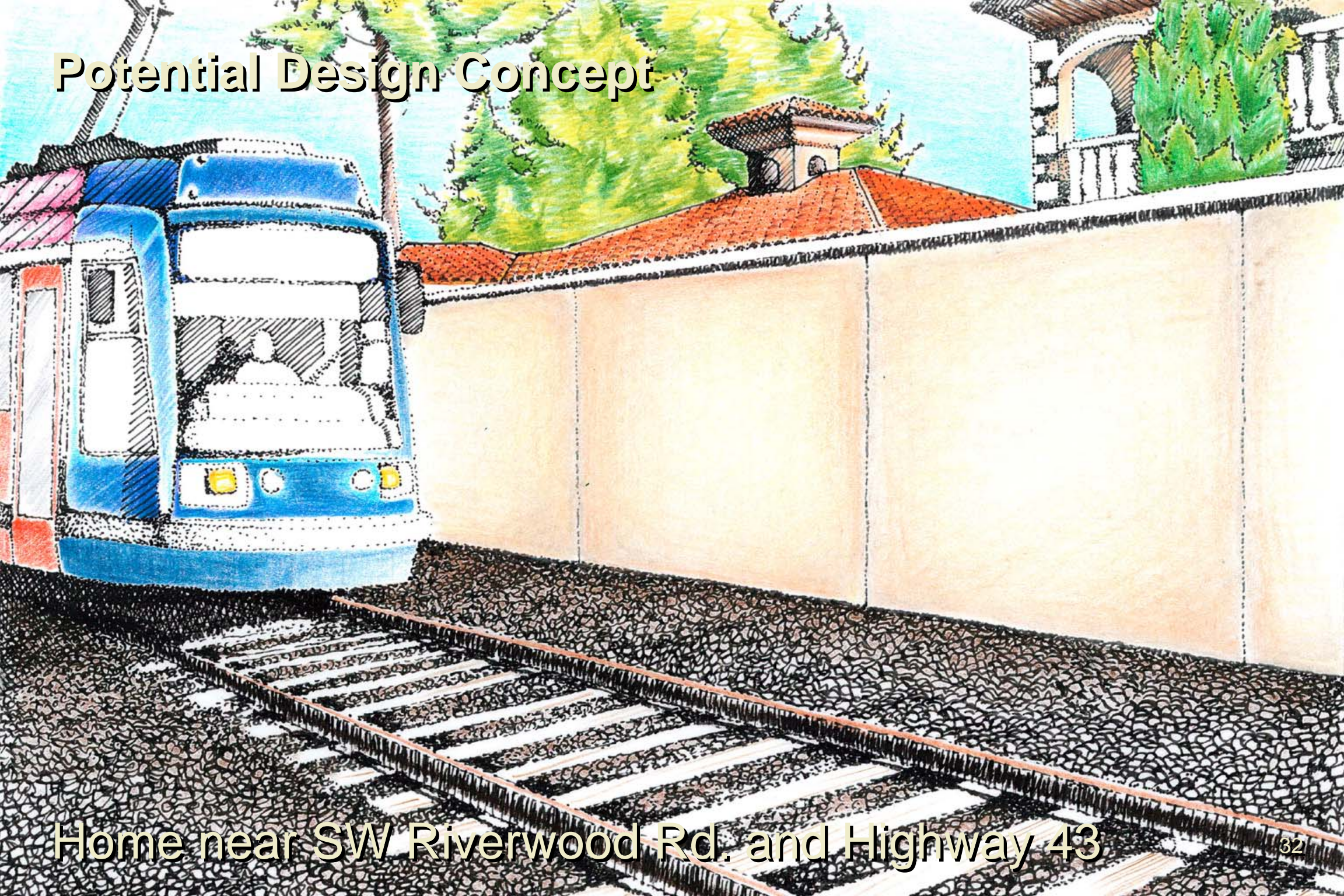
# Potential Design Concept



Home near SW Riverwood Rd. and Highway 43



# Potential Design Concept



Home near SW Riverwood Rd. and Highway 43



# Potential Design Concept



Home near SW Riverwood Rd. and Highway 43



# Streetcar Station



Willamette Shore Line and SW Riverwood Rd.



Existing



Willamette Shore Line and SW Riverwood Rd.



# Streetcar Station



Willamette Shore Line and SW Riverwood Rd.



**BRT Station**

Highway 43 and SW Military Rd.



Existing

Highway 43 and SW Military Rd.





# BRT Station



Highway 43 and SW Military Rd.



# Streetcar and BRT Stations



Highway 43 and SW Briarwood Rd.



# Streetcar and BRT Stations



E Ave.

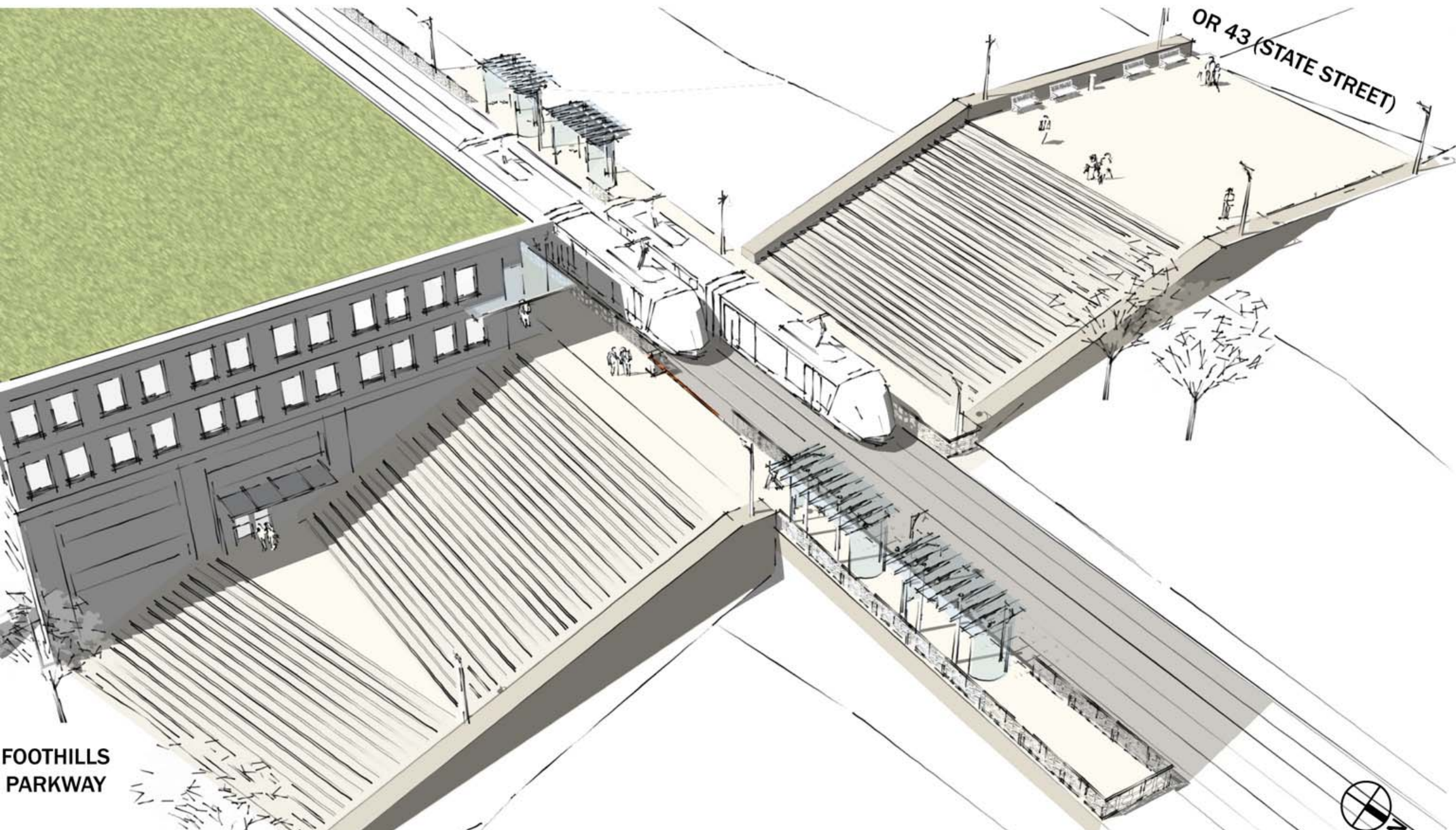


# Streetcar and BRT Stations



Trolley Terminus



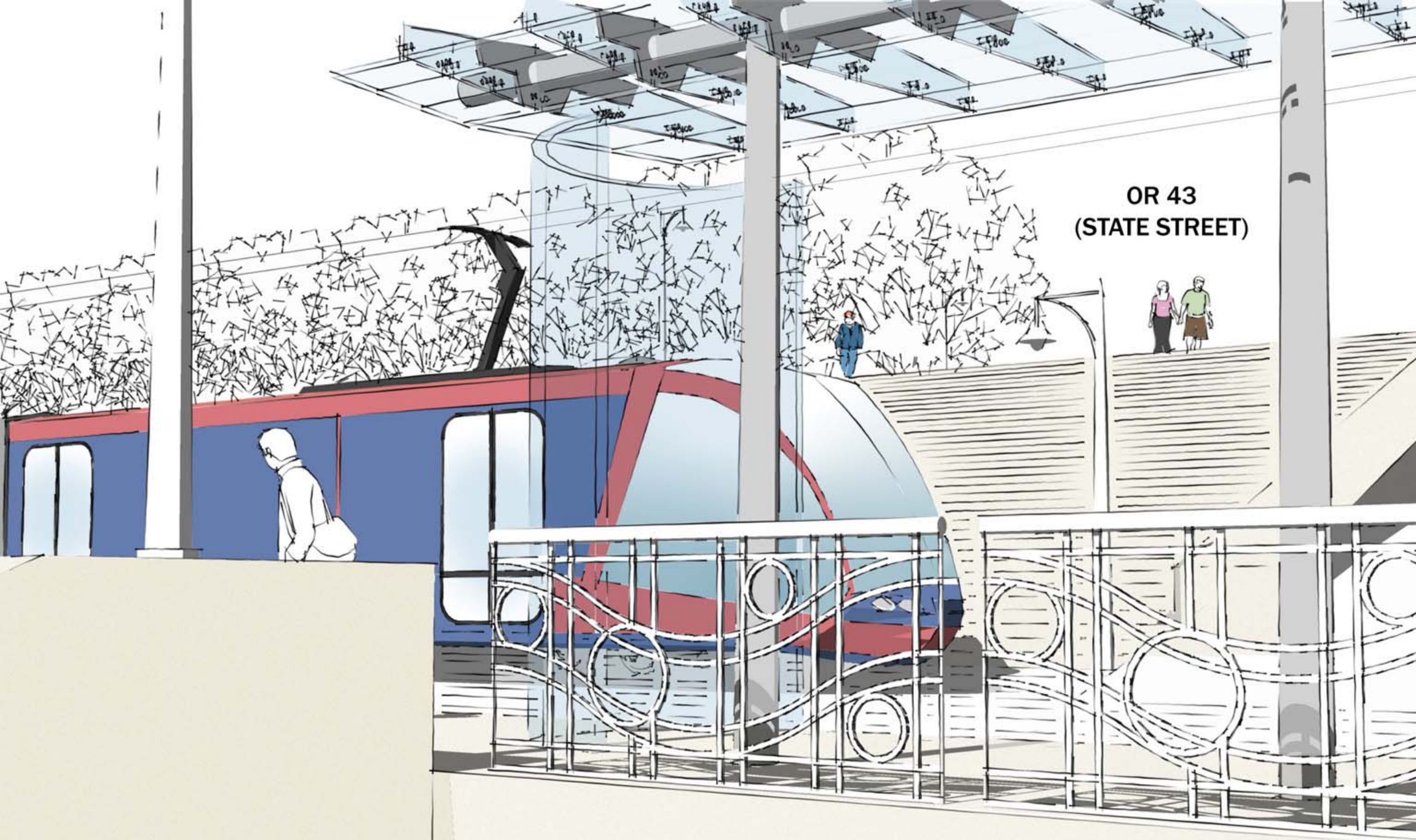


FOOTHILLS  
PARKWAY

# Trolley/Foothills Potential Redevelopment Concept





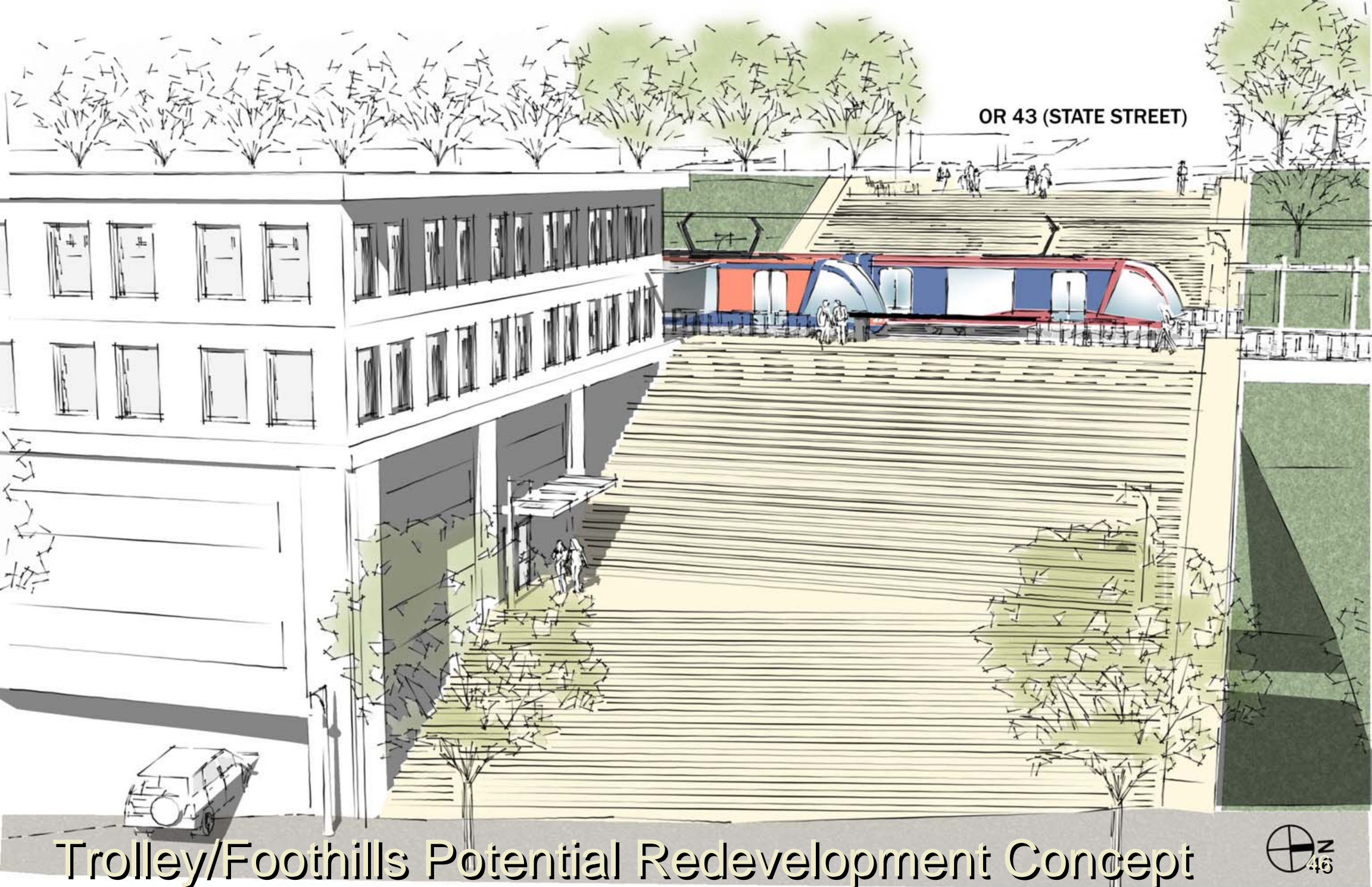


OR 43  
(STATE STREET)

Trolley/Foothills Potential Redevelopment Concept







OR 43 (STATE STREET)

# Trolley/Foothills Potential Redevelopment Concept

FOOTHILLS PARKWAY





# Streetcar and BRT Stations



Albertson's Terminus



# Existing



## Albertson's Terminus

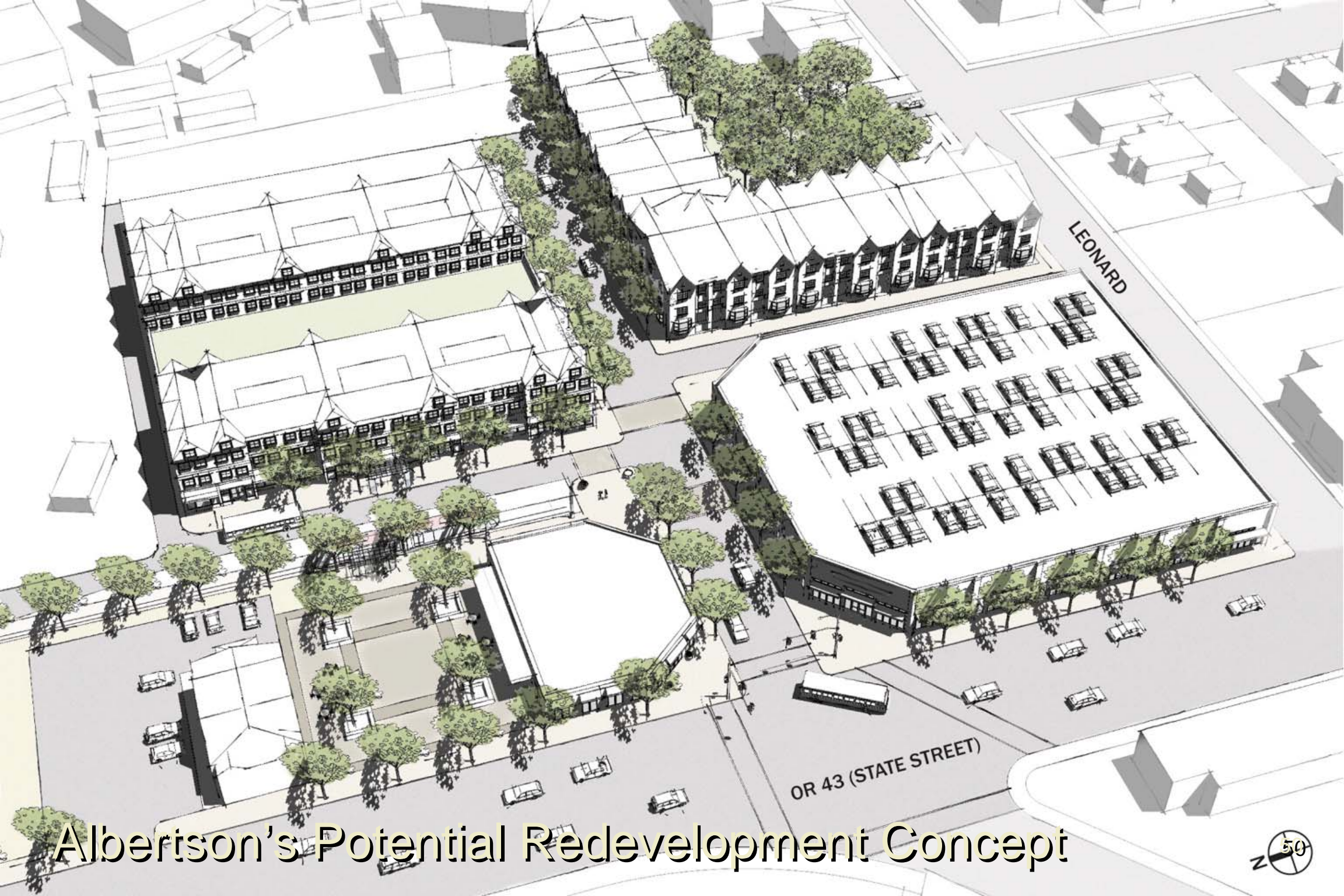


# Streetcar Station



Albertson's Terminus





Albertson's Potential Redevelopment Concept





Albertson's Potential Redevelopment Concept

OR 43 (STATE STREET)





Albertson's Potential Redevelopment Concept



# Streetcar Safeway Loop Option



A Ave. and 1st St.



Existing



A Ave. and 1st St.



# Streetcar



A Ave. and 1st St.





Safeway Terminus Potential Redevelopment Concept





5TH STREET

Safeway Terminus Potential Redevelopment Concept







Safeway Terminus Potential Redevelopment Concept

