

Lake Oswego to Portland Transit Project

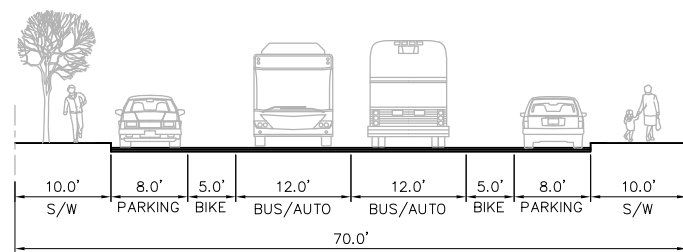
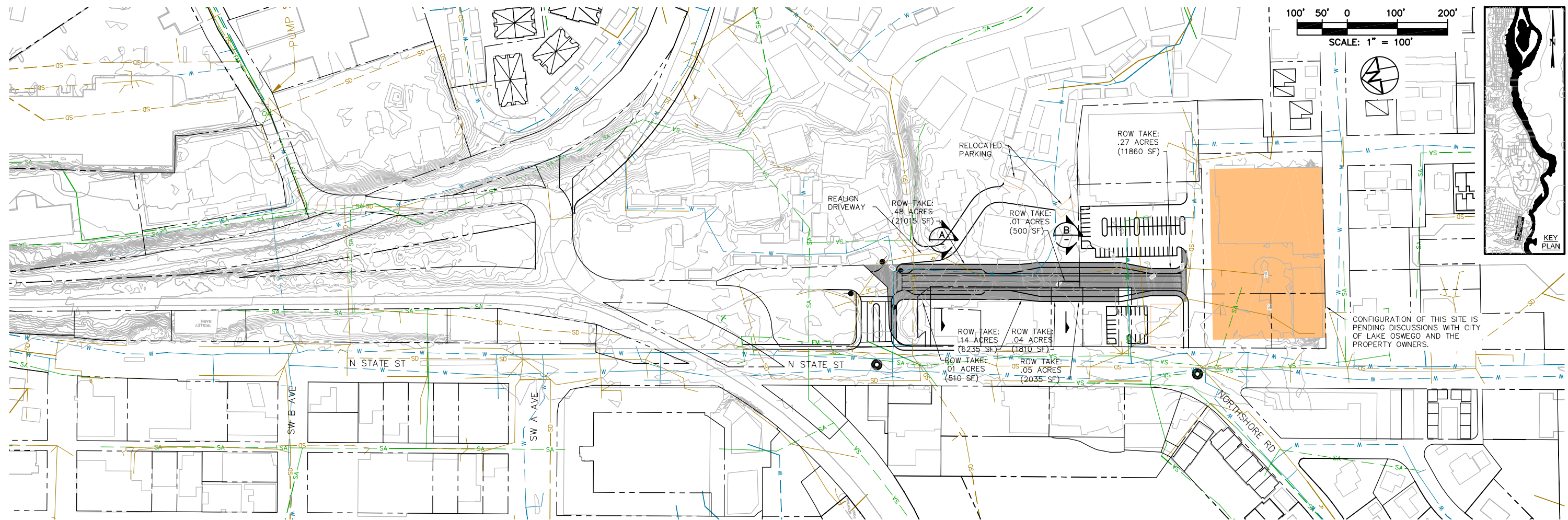
Enhanced Bus Plan Set

For Development of the
Draft Environmental Impact Statement (DEIS)

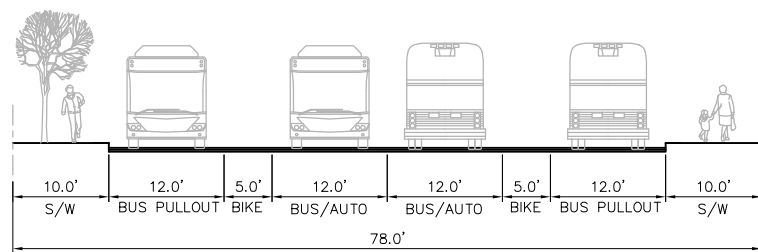
November 9, 2009



U.S. Department
of Transportation
Federal Transit Administration
Federal Highway Administration



STANDARD SECTION A **A**



STANDARD SECTION B **B**

LEGEND

- | | | | | | | | | | |
|--------------------------|---|---------------------|-----|------------|---|----------------------|-----|---------------------|---|
| EXISTING TRAFFIC SIGNALS | ● | STOP SIGN | ● | STRUCTURES | ▭ | EXISTING SEWER LINES | --- | CONSTRUCTION LIMITS | ▭ |
| MODIFIED TRAFFIC SIGNALS | ⊙ | FENCE | — | WALLS | ▭ | EXISTING STORM LINES | --- | FREIGHT TRACKS | ▭ |
| NEW TRAFFIC SIGNALS | ● | GATED CROSSINGS | — | ROW TAKE | ▭ | EXISTING WATER LINES | --- | PROPERTY TAKE | ▭ |
| | | ROADWAY RECONSTRUCT | --- | | | | | FILL AREA | ▭ |

DEIS
CONCEPT PLANS

CONTENTS
SUBJECT TO
CHANGE



LAKE OSWEGO TO PORTLAND

PLAN VIEW
ENHANCED BUS
OPTION

DWG NO.

CS-112B

SHEET NO.