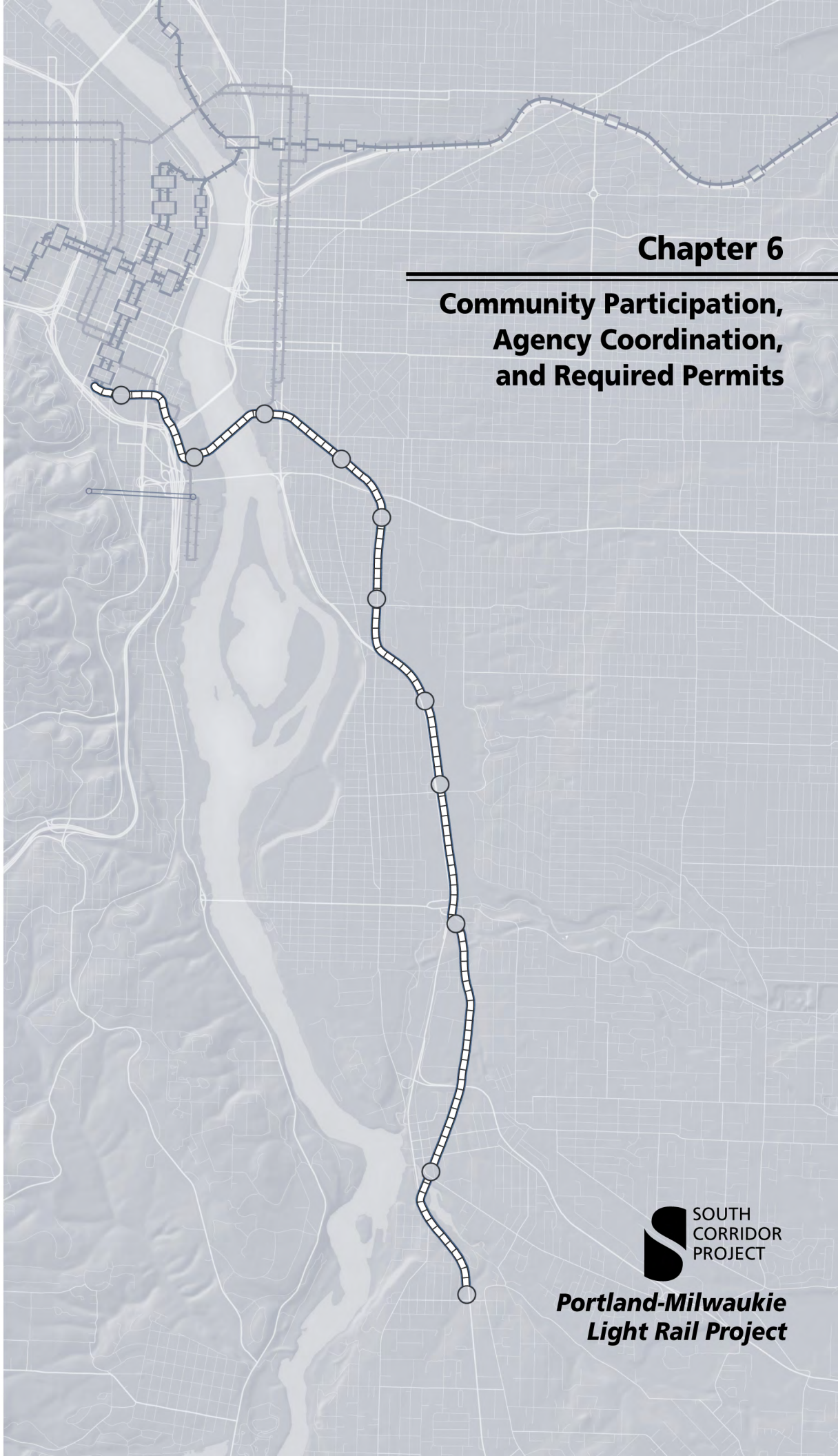


## Chapter 6

# Community Participation, Agency Coordination, and Required Permits



SOUTH  
CORRIDOR  
PROJECT

**Portland-Milwaukie  
Light Rail Project**

## 6. COMMUNITY PARTICIPATION, AGENCY COORDINATION, AND REQUIRED PERMITS

This section summarizes the community participation process for the Portland-Milwaukie Light Rail Project, describing past activities and elements as well as those used to support the preparation of the Final Environmental Impact Statement (FEIS) and Preliminary Engineering. Additional information on community participation activities can be found in the Preface; Chapter 2, Alternatives Considered; and Appendix B, Environmental Justice Compliance. Responses to public comments received during the Supplemental Draft Environmental Impact Statement (SDEIS) public comment period are introduced in Chapter 7, Public Comment Summary and contained in full in Appendix P, SDEIS Public Comments and Responses.

### 6.1 GOALS OF THE COMMUNITY PARTICIPATION PROGRAM

The goal of the public involvement process has been to support detailed design and engineering and avoidance or mitigation of community and environmental impacts through participation of well-informed and involved community members and local governments. This process was designed to ensure that community concerns and issues were identified and addressed in the planning, engineering, environmental, economic, and financial analysis of the project as well as to ensure that previously identified concerns were addressed as designs were refined and mitigation plans developed. Public involvement and participation have been critical in the development of the project and decision-making processes during this and earlier phases including the *Portland-Milwaukie SDEIS*, South Corridor I-205/Portland Mall Light Rail Project, and the South/North Transit Corridor Study. Active public participation and involvement have been integral elements in all phases of the Portland-Milwaukie Light Rail Project, including:

- Proactive public involvement and education programs to provide comprehensive and understandable information for the project as a whole and programs tailored to specific geographical areas, design issues, and community concerns

### CHAPTER CONTENTS

---

6.1 GOALS OF THE COMMUNITY PARTICIPATION PROGRAM.....	6-1
6.1.1 Citizens Advisory Committee .....	6-2
6.1.2 Stakeholder Meetings .....	6-4
6.1.3 Other Community Meetings .....	6-6
6.1.4 Mitigation Related Outreach.....	6-15
6.1.5 Community Outreach Tools .....	6-15
6.1.6 Media Outreach and Advertising.....	6-16
6.1.7 Documentation .....	6-16
6.1.8 Notification .....	6-17
6.1.9 Environmental Justice Outreach and Compliance .....	6-17
6.1.10 Complying with Federal and State Regulations .....	6-17
6.2 PUBLIC PARTICIPATION EFFORTS IN PREVIOUS PROJECT PHASES .....	6-17
6.2.1 South/North Corridor DEIS.....	6-17
6.2.2 South Corridor Project.....	6-18
6.2.3 Portland-Milwaukie Light Rail Project SDEIS .....	6-18
6.3 AGENCY COORDINATION .....	6-20
6.4 TRIBAL COORDINATION .....	6-23
6.5 PROJECT PERMITS AND APPROVALS .....	6-23
6.6 FEDERAL PERMITS AND APPROVALS.....	6-23
6.7 STATE OF OREGON PERMITS AND APPROVALS .....	6-24
6.8 LOCAL JURISDICTION PERMITS AND APPROVALS.....	6-25

- Public involvement programs designed in collaboration with local governments to meet local needs
- Timely public notice via postal mail and electronic announcements
- Comprehensive web site providing project information and promoting public comment and public meetings
- Full public access and involvement in key information, actions, and decisions
- Outreach to segments of the community that typically do not become involved in transportation planning
- Support for early and continuing involvement of the public General Elements of the Community Participation Program

This section outlines the general elements included within the community participation program. Community participation efforts were led by TriMet with direct support from Metro, in coordination with staff from the cities of Portland and Milwaukie, Clackamas County, and the Oregon Department of Transportation (ODOT).

### **6.1.1 Citizens Advisory Committee**

The 24-member Citizens Advisory Committee (CAC) continued to meet during the preparation of the FEIS and Preliminary Engineering. Many committee members were members of the SDEIS CAC. Membership was expanded to ensure representation from all geographic segments of the Portland-Milwaukie Light Rail Project alignment as well as specialized user groups. Members represented the following:

#### City of Portland

- South Waterfront Neighborhood
- South Portland Neighborhood
- Hosford-Abernethy Neighborhood
- Sellwood-Moreland Neighborhood
- Eastmoreland Neighborhood
- Brooklyn Neighborhood
- Portland State University
- Central Eastside Industrial Council
- Oregon Museum of Science and Industry
- Portland Opera

- Lloyd District Transportation Management Association

#### City of Milwaukie

- Historic Milwaukie Neighborhood
- Ardenwald-Johnson Creek Neighborhood
- Island Station Neighborhood
- Greater Milwaukie area
- Portland Waldorf School
- Downtown Milwaukie businesses
- North Milwaukie Industrial Area businesses

#### Clackamas County

- Oak Grove
- Oak Lodge Community Council

#### User Groups

- TriMet Committee on Accessible Transportation
- Transit riders
- Bicycle Transportation Alliance
- Bicycle and pedestrian interests

The CAC holds monthly public meetings with project staff to provide advice on project design, construction, impacts on businesses and neighborhoods, and other issues as they arise. The meeting format allows time for a committee member roundtable for members to address issues of significance for their communities, as well as time for public comment. TriMet sends electronic notices of CAC meetings to its interested party list that reaches more than 3,300 subscribers and publishes meeting information on the project web site. Meeting notes, presentations, and other materials also are archived on the project web site.

The committee works with TriMet and Metro staff to review and understand technical, design, and operational information in order to facilitate informed recommendations from their communities. Its feedback provides a local perspective and establishes a forum for corridor-wide community input. The CAC advises the Portland-Milwaukie Steering Committee and project staff on issues related to neighborhood character and needs.

## 6.1.2 Stakeholder Meetings

To supplement general and corridor-wide updates at CAC meetings, the project hosted numerous stakeholder meetings from March 2009 through mid October 2010, with more meetings to be scheduled through the beginning of Final Design. These meetings focused on topics related to specific portions of the alignment, such as station areas, or single topics of community concern, such as visual impacts or traffic. These meetings were planned collaboratively by TriMet, Metro, the cities of Portland and Milwaukie, Clackamas County, and ODOT. TriMet sent electronic notice of the meetings to its interested party list and mailed meeting announcements for many of the events. Table 6.1-1 lists the stakeholder meetings.

**Table 6.1-1  
Stakeholder Meetings**

Date	Meeting
2/20/2009	Project open house
3/4/2009	Project open house
3/10/2009	Project open house
3/11/2009	SE 17 <sup>th</sup> Avenue stakeholder meeting
4/7/2009	South Auditorium/ RiverPlace stakeholder meeting
4/7/2009	Train horn noise information session
4/22/2009	SE 17 <sup>th</sup> Avenue stakeholder meeting
5/7/2009	Willamette River bridge vertical clearance meeting
5/7/2009	Park Avenue Station stakeholder meeting
5/18/2009	Tacoma Station stakeholder meeting
6/4/2009	Park Avenue Station design workshop #1
6/11/2009	Willamette River bridge open house
6/22/2009	Ardenwald stakeholder meeting
7/9/2009	Island Station stakeholder meeting
7/15/2009	Park Avenue Station design workshop #2
7/22/2009	Oak Lodge Community Planning Organization (CPO) stakeholder meeting
7/24/2009	Willamette River bridge design forum
8/3/2009	Tacoma Station design workshop

**Table 6.1-1  
Stakeholder Meetings**

Date	Meeting
8/10/2009	Kellogg Lake bridge and Trolley Trail stakeholder meeting
8/24/2009	Lincoln Station stakeholder meeting
8/25/2009	Bike and pedestrian integration stakeholder meeting
8/26/2009	Freight Committee briefing on Central Eastside
9/14/2009	Park Avenue Nature in Neighborhoods charrette #1
9/15/2009	Clinton Station stakeholder meeting
9/23/2009	SE 17 <sup>th</sup> Avenue stakeholder meeting
9/24/2009	Willamette River bridge programming workshop #1
9/24/2009	Park Avenue Nature in Neighborhoods charrette #2
10/5/2009	Lake Road Station design workshop
10/12/2009	Tacoma Station design and traffic meeting
10/22/2009	Park Avenue Station stakeholder meeting
10/26/2009	Tacoma Station traffic meeting #2
11/9/2009	Bybee Station stakeholder meeting
12/2/2009	Southeast Portland Bike/Pedestrian Review
12/17/2009	Citizens Advisory Committee review of 25% engineering plans
1/25/2010	West Bank Future Connections - Willamette River bridge
1/28/2009	Willamette River bridge programming workshop #2
1/28/2010	Bybee Station discussion with neighborhood leaders
2/1/2010	East Bank Future Connections - Willamette River bridge
2/10/2010	Future Harold Station discussion with neighborhood leaders
2/11/2010	Tacoma Station and park-and-ride traffic impacts meeting
2/22/2010	Project open house
2/25/2010	Project open house

**Table 6.1-1  
Stakeholder Meetings**

Date	Meeting
3/30/2010	Willamette River bridge programming workshop #3
4/5/2010	Citizens Advisory Committee review of 30% engineering plans
4/9/2010	Citizens Advisory Committee review of 30% engineering plans
5/24/2010	Willamette River Bridge railing mock-up session
6/3/2010	Tacoma: integrating habitat design charrette #1
6/23/2010	Tacoma: integrating habitat design charrette #2
6/24/2010	Trolley Trail coordination meeting
7/13/2010	Tacoma: integrating habitat design charrette #3
9/29/2010	Park Avenue station stakeholder meeting

### **6.1.3 Other Community Meetings**

In addition to CAC and stakeholder meetings, public meetings and events of various sizes and formats occurred through the process to provide information to the public and gather input. Community meetings targeted a wide variety of groups, including neighborhood and business groups, property owners, tenants adjacent to the alignment, transportation and environmental interest groups, major employers, civic organizations and elected officials.

**Project open houses** - To kick off the Preliminary Engineering and FEIS phase of the Portland-Milwaukie Light Rail Project, three open houses were held in February and March 2009. Postcards were mailed to more than 17,000 property owners along the alignment, paid announcements were placed in the Clackamas Review, electronic announcements were sent to the project subscriber list and calendar listings were sent to a number of community newsletters and web sites. Two open houses were again held to mark 25% engineering and share information about the FEIS in February 2010. To promote these events, TriMet sent announcements to 17,000 property owners, more than 3,300 email subscribers and advertised in the Clackamas Review.

**Willamette River Bridge Advisory Committee** - The committee, comprised of design, transportation, business and community leaders, was charged with making a recommendation on the type of bridge to advance into Preliminary Engineering. WRBAC, supported by technical staff making up the bridge working group, studied a wide variety of bridge types and ultimately made its recommendation of cable-stayed based on several selection criteria: cost, risk, navigation, fundamental performance, architectural, urban context, greenway impact, environmental-sustainability, operations, miscellaneous technical considerations and opportunities. The committee met 10 times from July 2008 to November 2009. WRBAC

meetings were open to the public, were advertised by TriMet via electronic notification and all meeting materials are posted on TriMet's Portland-Milwaukie web site.

**River user meetings** - As a part of the bridge study process, project staff met with numerous river users and other related river organizations to discuss both vertical and horizontal clearance for the new Willamette River bridge.

**Property owner meetings** - Project staff met with all property owners along the alignment who had significant impacts to their property. Additionally, numerous meetings were held with property owners at the landside of the Willamette River bridge to fully understand the implications of the bridge and its design. Topics included connections to and from the bridge for cyclists and pedestrians as well as station configuration and impacts to the City of Portland's Greenway. Meetings with property owners near the alignment will continue as the project moves forward.

**Milwaukie monthly light rail meetings** - City of Milwaukie staff hosts on-going light rail meetings monthly, beginning in April 2009, to provide project updates and solicit community feedback. Meetings are advertised in Milwaukie's newsletter which is mailed to city residents, and regular email notices are sent to individuals who signed up on the City's light rail project interested persons list. From these meetings, issues are identified that call for more information or further public process.

**Public Art Advisory Committee** - The PAAC is a recently formed community advisory committee whose primary task is to oversee the implementation of the public art plan for the light rail project. The PAAC is comprised of volunteer arts and design professionals, such as artists, architects, landscape architects, curators or individuals with considerable experience in the visual arts. PAAC members are representative of communities along the alignment and will act as liaisons to the larger community, as well as select artists, review artwork concept proposals and approve final designs of artwork. The PAAC holds public meetings monthly throughout the design phase of the project. Meeting notices and summaries are posted on the project web site, as are fact sheets describing art program milestones. Periodic updates of PAAC activities are also presented to the Citizens Advisory Committee and other community forums.

**Project briefings to established groups** - Project briefings were regularly provided to groups and organizations during their established meeting times. Typically, these were advertised and open to all members. Between January 2009 and mid October 2010, project staff participated in numerous briefings. Additional briefings will be scheduled through the beginning of Final Design. Table 6.1-2 lists the briefings.

**Table 6.1-2  
Project Briefings to Established Groups**

Date	Meeting
1/2/2009	Hosford-Abernethy Neighborhood Development
1/13/2009	City of Portland Planning Commission



**Table 6.1-2  
Project Briefings to Established Groups**

Date	Meeting
1/28/2009	Brooklyn Action Corps
2/3/2009	Central Eastside Industrial Council Land Use Committee
2/4/2009	Sellwood-Moreland Improvement League
2/9/2009	Central Eastside Urban Renewal Advisory Committee
2/10/2009	Creston Kenilworth Neighborhood Association
2/10/2009	South Waterfront 20/20 Transportation Committee
2/12/2009	North Macadam Urban Renewal Advisory Committee
2/16/2009	North Clackamas Chamber of Commerce
2/18/2009	TriMet Committee for Accessible Transportation
2/19/2009	Portland Mall Management, Inc.
2/19/2009	City of Portland Design Commission
2/24/2009	Portland Business Alliance Central City Committee
2/26/2009	Portland Waldorf School
2/27/2009	Lloyd District Business Improvement District
3/9/2009	Historic Milwaukie Neighborhood Association
3/10/2009	Portland Business Alliance Transportation Committee
3/10/2009	City of Portland Planning Commission
3/10/2009	Ardenwald-Johnson Creek Neighborhood Association
3/11/2009	Portland Development Commission
3/12/2009	Oregon Maritime Museum Board
3/17/2009	Metro Council (work session)
3/24/2009	Portland Chapter, American Institute of Architects Downtown Urban Design Panel
3/25/2009	Milwaukie Neighborhood Leadership

**Table 6.1-2  
Project Briefings to Established Groups**

Date	Meeting
3/25/2009	Brooklyn Action Corps
4/21/2009	Hosford-Abernethy Neighborhood Development
4/28/2009	Jennings Lodge Neighborhood Association
5/6/2009	South Portland Neighborhood Association
5/13/2009	Lower Columbia Region Harbor Safety Committee
5/14/2009	North Macadam Urban Renewal Advisory Committee
5/26/2009	Milwaukie Elks Lodge Board of Directors
6/2/2009	City of Portland City Council (work session)
6/8/2009	Central Eastside Urban Renewal Advisory Committee
6/9/2009	City of Portland Bicycle Advisory Committee
6/9/2009	American Plaza Condos
6/10/2009	Portland Development Commission
6/16/2009	City of Portland Pedestrian Advisory Committee
6/17/2009	City of Portland City Council
8/18/2009	American Plaza Condos
8/25/2009	Portland Chapter, American Institute of Architects Urban Design Committee
8/27/2009	Village at Lovejoy Fountain apartments
9/1/2009	Central Eastside Industrial Council Land Use Committee
9/15/2009	OMSI District Property Owners meeting
9/15/2009	Environmental and Water Resource Group Boat Trip and Presentation
9/22/2009	Portland Chapter, American Institute of Architects Downtown Urban Design Panel
10/15/2009	American Plaza MAX Committee
11/4/2009	Westmoreland Union Manor (senior housing) Civic Club

**Table 6.1-2  
Project Briefings to Established Groups**

Date	Meeting
11/10/2009	Women's Transportation Seminar
11/12/2009	Portland Waldorf School Light Rail Committee
11/18/2009	Sellwood-Moreland Improvement League Board
11/19/2009	Eastmoreland Neighborhood Association
12/2/2009	Bike and Pedestrian Stakeholder User Group
12/3/2009	City of Portland Design Commission
12/4/2009	Milwaukie Elks Grand Lodge Steering Committee
12/8/2009	City of Portland Planning Commission
12/16/2010	TriMet's Committee on Accessible Transportation
1/6/2010	Clinton & Rhine station area discussion group
1/12/2010	City of Portland Planning Commission
1/19/2010	OMSI/SE Water Ave station area planning meeting
1/19/2010	City of Portland Pedestrian Advisory Committee
1/19/2010	University of Oregon Architecture Program
1/21/2010	City of Portland Design Commission
1/27/2010	Trolley Trail neighbors
2/3/2010	Hosford-Abernethy/Brooklyn station area discussion group
2/9/2010	City of Portland Planning Commission
2/10/2010	American Plaza MAX Committee
2/16/2010	Reed Neighborhood
2/18/2010	Eastmoreland Neighborhood
2/18/2010	City of Portland Design Commission
2/18/2010	City of Portland City Council
2/18/2010	Sellwood-Westmoreland Business Alliance

**Table 6.1-2  
Project Briefings to Established Groups**

Date	Meeting
2/22/2010	Professional Engineers of Oregon
2/23/2010	American Institute of Architects Downtown Urban Design Panel
2/24/2010	Oak Lodge Community Council
3/4/2010	Portland Freight Committee
3/8/2010	Central Eastside Urban Renewal Advisory Committee
3/8/2010	Hector Campbell Neighborhood
3/8/2010	Historic Milwaukie Neighborhood
3/9/2010	Creston-Kenilworth Neighborhood
3/9/2010	City of Portland Bicycle Advisory Committee
3/9/2010	City of Portland Planning Commission
3/9/2010	City of Milwaukie Design/Landmarks Commission and Planning Commission
3/9/2010	Ardenwald-Johnson Creek Neighborhood
3/10/2010	Public Art Advisory Committee
3/10/2010	Brooklyn Action Corps Board
3/10/2010	Lake Road Neighborhood
3/10/2010	Lewelling Neighborhood
3/11/2010	Willamette Pedestrian Coalition
3/11/2010	Linwood Neighborhood
3/11/2010	Island Station Neighborhood
3/15/2010	Southeast Uplift Land Use and Sustainability Committee
3/16/2010	Metro Council (work session)
3/16/2010	Hosford-Abernethy Neighborhood
3/16/2010	Milwaukie City Council
3/16/2010	Johnson Creek Watershed Council

**Table 6.1-2  
Project Briefings to Established Groups**

Date	Meeting
3/17/2010	TriMet Committee on Accessible Transportation
3/18/2010	Metro Council
3/18/2010	City of Portland Design Commission
3/30/2010	Eastmoreland Neighborhood Association Transportation Committee
4/1/2010	City of Portland Design Commission
4/6/2010	Central Eastside Industrial Council Land Use and Transportation Committee
4/7/2010	Sellwood-Moreland Improvement League
4/8/2010	North Macadam Urban Renewal Advisory Committee
4/10/2010	McLoughlin Area Plan open house
4/12/2010	North Clackamas Chamber of Commerce
4/12/2010	Clackamas County Planning Commission
4/12/2010	Richmond Neighborhood Association
4/13/2010	City of Portland Planning Commission
4/14/2010	Portland Development Commission
4/15/2010	American Plaza Condos
4/15/2010	Ambassador Condos Annual Residents Meeting
4/20/2010	Milwaukie City Council on Johnson Creek Blvd
4/20/2010	City of Portland Pedestrian Advisory Committee
4/28/2010	Johnson Creek Watershed Council
4/28/2010	American Plaza Lincoln Tower residents meeting
4/30/2010	American Plaza MAX Committee
5/4/2010	Halprin Landscape Conservancy
5/5/2010	Hosford-Abernethy/Brooklyn station area discussion group
5/5/2010	South Portland Neighborhood

**Table 6.1-2  
Project Briefings to Established Groups**

Date	Meeting
5/12/2010	Portland City Council
5/13/2010	Waldorf School Light Rail Committee
5/17/2010	Milwaukie City Council
5/24/2010	Clackamas County Planning Commission
5/26/2010	City of Portland Office of Healthy Working Rivers
6/2/2010	Collaborative Life Sciences Building Steering Committee
6/16/2010	American Plaza MAX Committee
6/17/2010	South Waterfront Open House
6/22/2010	Oregon State Marine Board
6/24/2010	Central Eastside/Southern Triangle planning session
6/26/2010	Operation Lifesaver Safety Train (multiple tour times)
7/7/2010	Hosford-Abernethy /Brooklyn station area discussion group (walk tour)
7/14/2010	American Plaza MAX Committee
7/15/2010	American Plaza Condo Board meeting
7/21/2010	Sellwood-Moreland Improvement League Transportation Committee
7/27/2010	RiverPlace Community project update
7/28/2010	PDX Bridge Festival presentation
7/28/2010	Brooklyn Action Corps General Meeting
8/31/2010	Milwaukie City Council work session
9/7/2010	Clackamas County Board of County Commissioners work session
9/14/2010	City of Portland Bicycle Advisory Committee
9/16/2010	Eastmoreland Neighborhood
9/21/2010	River-in-Focus brownbag presentation
9/21/2010	City of Portland Pedestrian Advisory Committee

**Table 6.1-2  
Project Briefings to Established Groups**

Date	Meeting
9/21/2010	Hosford-Abernethy Neighborhood
9/22/2010	Oak Lodge Community Council
9/22/2010	American Plaza MAX Committee
9/22/2010	Brooklyn Action Corps
9/22/2010	Oak Lodge Community Council
10/5/2010	Central Eastside Industrial Council Transportation Committee
10/6/2010	Sellwood-Moreland Improvement League
10/6/2010	South Portland Neighborhood
10/11/2010	Richmond Neighborhood Association
10/11/2010	Central Eastside Urban Renewal Advisory Committee
10/11/2010	Portland Downtown Neighborhood Association
10/14/2010	North Macadam Urban Renewal Advisory Committee
Oct-Nov	Hosford-Abernethy Neighborhood
Oct-Nov	Eastmoreland Neighborhood
Oct-Nov	Oak Lodge Community Council
Oct-Nov	Ardenwald Neighborhood
Oct-Nov	Bicycle Transportation Alliance
Oct-Nov	Johnson Creek Watershed Council
Oct-Nov	TriMet Board
Oct-Nov	Metro Council
Oct-Nov	Portland City Council
Oct-Nov	Milwaukie City Council
Oct-Nov	Clackamas County Board of County Commissioners
Oct-Nov	Portland Development Commission Board

**Table 6.1-2  
Project Briefings to Established Groups**

Date	Meeting
Oct-Nov	City of Portland Design Commission
Oct-Nov	City of Portland Planning Commission
Oct-Nov	Milwaukie Planning Commission

### 6.1.4 Mitigation Related Outreach

Mitigation is an important mechanism to avoid, minimize, rectify, reduce, or compensate adverse environmental impacts. Draft mitigation measures were identified in the SDEIS and provided for public comment as part of the SDEIS review and public meetings conducted in 2008.

Subsequently, as the project conducted Preliminary Engineering and further environmental analysis, and in keeping with NEPA’s objective to be transparent and open, project staff has involved stakeholders in discussions about proposed project mitigations. Topics have included traffic and transportation mitigations, noise and vibration mitigations, visual mitigations, among others. Many of these discussions were the focus of meetings listed in 6.1.2 Stakeholder Meetings. When appropriate, project staff and jurisdictional partners engaged property owners and interested parties in one-on-one meetings about mitigation efforts. Outreach related to mitigation will continue through Final Design.

### 6.1.5 Community Outreach Tools

In addition to project-sponsored meetings and briefings to community groups, a wide range of other tools provided information about the light rail project and opportunities for participation.

**Project website.** The Portland-Milwaukie Light Rail Project web site ([trimet.org/pm](http://trimet.org/pm)) is continuously updated with upcoming meeting information and materials from past meetings and includes a way for people to sign up for email updates project-wide or for a particular area. The web site also provides a library of planning documents, including the SDEIS (May 2008), Willamette River bridge materials, station area planning materials, and project fact sheets. In addition to the primary project web site, information about the project is included on Metro’s web site as well as the City of Milwaukie’s light rail web site, where Milwaukie monthly light rail meeting agendas, presentations, and meeting materials are posted.

**Social media.** The project initiated a Facebook group intended to further disseminate project updates and meeting announcements to users of this social media channel. The project Facebook group page allows for short videos, photographs, and exchange with group members, and has a more conversational tone than the official project web site.

**Project fact sheets.** Fact sheets were distributed at all light rail meetings and are available on the project web site. Topics include project timeline, general project information, FEIS and preliminary/final engineering processes, safety and security, business support, and community participation opportunities.



**Direct mailing.** Postcards were mailed to residents along the alignment and the project's interested persons list announcing upcoming meetings. From March 2009 through February 2010, more than 68,000 postcards were mailed for ten direct mailings to property owners along the alignment.

**Conceptual Design Report.** The Conceptual Design Report presents the vision, process, and preliminary design for the project. Concepts and recommendations will guide the project into the final design phase. The report presents the current conceptual design of a number of project elements such as major structures, stations, pedestrian and bike connections, and terminus points, and provides an overview of the urban design vision. It also details the public process and key outstanding issues, and identifies future projects and processes that influence the design of the project. Community briefings held through February and March 2010 provided opportunities for public review of the design choices for essential project elements.

**Willamette River Bridge Type Selection Process.** This booklet describes the process of narrowing bridge types for consideration, focusing on the Willamette River Bridge Advisory Committee. It was distributed at open houses and is available for download on the project web site.

**Visual simulations.** The project created visual simulations of design concepts and mitigation strategies conceived for the alignment to increase public understanding and convey project scale, design, and impacts and mitigation where applicable.

### **6.1.6 Media Outreach and Advertising**

Project meetings in Milwaukie and Oak Grove were advertised in the *Clackamas Review* and *Oregon City News*. Tacoma and Bybee station meetings were listed in the *Clackamas Review* and *Sellwood Bee* event calendar sections.

Communications staff provided information to reporters from the *Oregonian*, the *Portland Tribune*, and the *Sellwood Bee* regarding various aspects of the project, including the beginning of Preliminary Engineering, the selection of a bridge type, and bridge design. Staff also worked with regional bloggers covering the bridge type selection process. This outreach resulted in numerous articles and media coverage on a variety of project topics.

### **6.1.7 Documentation**

A wide range of documentation was prepared and made available to the public throughout each project phase. Beyond outreach material developed specifically to engage the public, other documents that were made available include the following:

**Results Reports.** The project's results reports are available to the public for review and are listed in Appendix C, Supporting Documents.

**SDEIS/FEIS.** The SDEIS and FEIS are key public information documents available to all community members, stakeholders, agencies, and other interested people. The SDEIS provides information about the alternatives under consideration as well as a comparison of the benefits, costs, and impacts associated with each alternative. This FEIS presents impacts and mitigations of the Light Rail Project as well as responses to SDEIS public comments.

**SDEIS Public Comment and Responses.** A public comment report was published at the close of the SDEIS 45-day public comment period. As mandated by the National Environmental Policy Act (NEPA), the FEIS includes responses to those comments in Appendix P, SDEIS Public Comments and Responses.

### **6.1.8 Notification**

A range of techniques has been used to notify the public of project-related meetings and decision points. Information about project meetings has been provided at community meetings, emailed to the project's public notice subscription list, and posted on the project web site. Meetings regarding the Bybee, Tacoma, Milwaukie, and Oak Grove stations have been advertised or included in calendar announcements in the *Clackamas Review*, the *Oregon City News*, and the *Sellwood Bee*. Open house or workshop invitations were mailed or hand-delivered to homes and businesses in a targeted geographic area.

### **6.1.9 Environmental Justice Outreach and Compliance**

Early in the project, Metro staff evaluated 2000 U.S. Census data and reviewed past documentation of the project area to identify concentrations of low-income, Hispanic or minority residents. No significant concentrations of these groups were identified. The 2000 U.S. Census data related to low-income, minority, and Hispanic populations are provided in Section 3.3, Community Impact Assessment and Appendix B, Environmental Justice Compliance.

### **6.1.10 Complying with Federal and State Regulations**

Metro's Public Involvement Planning Guide ensures that the appropriate publics are involved, that adequate notice of meetings and decision points are given, and that a variety of appropriate public involvement strategies are used. Metro coordinated directly with TriMet in designing and implementing the FEIS community participation strategy. The Federal Transit Administration (FTA) also provides guidance and review to ensure that the requirements of NEPA and other applicable federal laws are met. The public involvement effort for this FEIS complies with Metro's Transportation Planning Public Involvement Policy. Metro's policy exceeds federal and state requirements for public involvement and notification.

## **6.2 PUBLIC PARTICIPATION EFFORTS IN PREVIOUS PROJECT PHASES**

The key public involvement activities undertaken within the previous major project phases prior to undertaking this in the FEIS are summarized below. Chapter 2, Alternatives Considered of this FEIS provides a project timeline and a more detailed description of these project phases.

### **6.2.1 South/North Corridor DEIS**

The South Corridor Project was preceded by the South/North Corridor Project. A DEIS was published in February 1998 that evaluated various light rail alternatives in the South/North Corridor. The South/North Project Locally Preferred Alternative (LPA) was revised when voters failed to re-approve local funding in 1998. The North Corridor Interstate MAX Project evolved with alternative sources of local funding in the north portion of the corridor, and the South

Corridor Project evolved from a re-examination of a variety of high-capacity transit alternatives in the South Corridor. Community participation during the South/North Project began in 1991 with preliminary alternatives analysis and is detailed in the *South/North Corridor Project DEIS* (Metro 1998).

## **6.2.2 South Corridor Project**

Between 2000 and 2005, the South Corridor Project conducted public involvement for the South Corridor Alternatives Analysis; its SDEIS, which included alternatives for light rail, bus rapid transit, and busways in the Portland-Milwaukie Corridor and in the I-205 Corridor; and its FEIS. Details on the public involvement efforts conducted for that SDEIS are available in the *South Corridor SDEIS* (Metro 2002) and *I-205/Portland Mall Light Rail FEIS* (Metro 2005).

## **6.2.3 Portland-Milwaukie Light Rail Project SDEIS**

Metro, in conjunction with project partners, conducted extensive outreach and public involvement in preparation of the *Portland-Milwaukie SDEIS* and adoption of the 2008 LPA. A public comment period accompanied the publication of the SDEIS and ran from May 9 to June 23, 2008. All comments received during the comment period appear in Appendix P, SDEIS Public Comments and Responses.

Actions supporting the SDEIS are summarized below and are divided into the following sections: project committees, project events and meetings, community presentations, and outreach products.

### Project Committees

**Citizen Advisory Committee** - The 21-member SDEIS CAC was formed in the summer of 2007 and met 14 times. They provided feedback from a community perspective on such things as cost, acquisitions and displacements, safety and security, traffic impacts, ridership, project finance, the river crossing, and station areas. On June 12, 2008, the CAC made a recommendation on the LPA to the project's Steering Committee.

**Safety and Security Task Force** - The 18-member task force was formed in response to community concerns regarding safety and security on the proposed light rail line. Participants provided input on how to ensure the safety and security of passengers and the public. The group met five times between September 2007 and January 2008, and produced a report. More information about the task force can be found in Section 3.16, Safety and Security.

**Willamette River Crossing Partnership** - The partnership group included property owners and neighborhood representatives from both sides of the river to study possible locations for the new bridge. The met four times in a nine-month period and presented a recommendation on the river crossing to the project's Steering Committee.

**Metro Committee for Citizen Involvement** - The committee reviewed the project public involvement plan early in the project study. The group made recommendations that enhanced the project's outreach efforts.

### Project events and meetings

**Project open houses** - Seven open houses, three “segment meetings,” and two community workshops were held from March 2007 to May 2008 to share project updates and solicit input.

**Station area planning workshops** - Four station area planning workshops were held from October 2007 to March 2008.

**Community briefings** - Metro staff and project partners made 123 presentations to community groups, neighborhood associations, business organizations, interested advisory committees, and local governments.

**Property owner meetings** - Metro, TriMet, and Portland and Milwaukie city staff sent letters to and met with potentially affected owners to provide early notice of potential impacts due to light rail operations.

**Public hearing** - A public hearing before the project Steering Committee was held Monday, June 9, 2008 at Metro Regional Center council chambers.

### Outreach products

**Project newsletters** - A September 2007 newsletter, mailed to approximately 11,000 residents, provided a project overview and invited participation in the decision-making process. A May 2008 newsletter, mailed to approximately 12,000 residents, summarized SDEIS findings and invited participation in the public events and comment opportunities. Other supplemental newsletters included three Metro Councilor newsletters sent to approximately 1,400 constituents, and three Metro e-newsletters, each of which was sent to approximately 4,700 residents.

**Project fact sheets** - Project fact sheets provided information and opportunities for participation.

**Project web site** - Metro’s web site contained regularly updated project information for review and download.

**Direct mailing** - Postcards were mailed to business and property owners along the proposed alignments in Milwaukie as well as interested persons, advocacy groups, neighborhood groups, and elected officials. Approximately 8,600 residents of Oak Grove received postcard invitations to a station area planning workshop held in March 2008. Following the publication of the SDEIS, a postcard was sent to approximately 13,000 residents in April 2008 to invite participation in two project open houses, the public hearing, and the comment period.

**Canvassing** - In May 2008, targeted door-to-door canvassing made property owners aware of the project and upcoming project events. In advance of project events, many retailers agreed to post and distribute project flyers. In June 2008, flyers were also distributed in local schools in the Oak Grove area to approximately 3,000 students and their families.

**Media** - Media advisories informed local communities about the Safety and Security Task Force (December 2007) and the publication of the SDEIS (May 2008), as well as the 45-day public comment period and related events. In May 2008, advertisements were placed in the *Oregonian*, the *Clackamas Review*, the *Oregon City News*, *El Hispanic News*, and the *Asian Reporter* to announce the publication of the SDEIS and the public comment period.

**Local government outreach activities** - The City of Milwaukie hosted local meetings, sent media advisories, and placed newspaper ads in the *Clackamas Review* (May 2007 and July 2007) to announce meetings and events. The City of Milwaukie sent postcards and emails to constituents and included stories in the city newsletter. The city also created a project web page. Clackamas County sent media advisories (February 2007 and April 2007), placed ads in the *Clackamas Review*, and sent e-newsletters, mailings, and postcards to residents to announce events. The City of Portland included project information in two daily e-newsletters and sent a media advisory in May 2008 regarding the release of the SDEIS.

### 6.3 AGENCY COORDINATION

This section summarizes the agency coordination that the Portland-Milwaukie LRT Project has undertaken through the preparation of this *Portland-Milwaukie LRT Project Final Environmental Impact Statement* (FEIS). Agency coordination has played an important role throughout the Portland-Milwaukie LRT Project process including the preparation of this FEIS. The agencies listed in Table 6-1 were contacted during data collection, resource identification, determination of regulatory compliance requirements, development of analysis methods, or inventorying of resources and identification of mitigation measures. For additional detail on cooperating and participating agencies, see Appendix A, Agency Coordination and Correspondence.

**Table 6.3-1  
Federal, State, and Local Agency Coordination**

Agencies	Topics
Federal Agencies	
U.S. Department of Defense, Army Corps of Engineers	Wetlands, Hydrology/Water Quality, and Navigation
U.S. Department of Homeland Security, U.S. Coast Guard	Navigation, Climate Change, Hydrology/Water Quality
U.S. Department of Transportation, Federal Highway Administration	Freeway and Highway Access, Hydrology/Water Quality, Wetlands, Traffic, Air Quality, Right-of-Way, Displacements/ Relocations, Highway Improvement Plans, Noise and Vibration, and Capital Cost Estimates
U.S. Department of Transportation, Federal Railroad Administration	Right-of-Way, Traffic, Transit, Safety and Security
U.S. Department of Homeland Security, Federal Emergency Management Agency	Hydrology/Water Quality

**Table 6.3-1  
Federal, State, and Local Agency Coordination**

Agencies	Topics
U.S. Department of Homeland Security, Transportation Security Administration	Safety and Security
U.S. Department of Energy, Bonneville Power Administration	Energy
U.S. Department of the Interior, Geological Survey	Hydrology/Water Quality, Geology/Soils
U.S. Department of the Interior, Park Service	Parklands Resources and Visual Impact Assessment
Advisory Council on Historic Preservation	Historic/Cultural Resources
U.S. Environmental Protection Agency	Wetlands, Air Quality, Hazardous Materials, and Ecosystems, Water Quality/Sole Source Aquifer
U.S. Department of the Interior, Fish and Wildlife Service	Threatened and Endangered Species, Essential Fish Habitat, Least Environmentally Practicable Alternative
U.S. Department of Agriculture, Natural Resources Conservation Service	Wetlands, and Geology/Soils
U.S. Department of Commerce, National Oceanic and Atmospheric Administration (NOAA) Fisheries	Threatened and Endangered Species, Essential Fish Habitat, Least Environmentally Practicable Alternative Radio Broadcasting Studio Move – Change of Address
Federal Communications Commission	
Tribal	
Columbia River Inter-Tribal Fish Commission	Cultural Resources, Fisheries
Grande Ronde Tribe	Cultural Resources
Siletz Tribe	Cultural Resources

**Table 6.3-1  
Federal, State, and Local Agency Coordination**

Agencies	Topics
Warm Springs Tribe	Cultural Resources
State of Oregon Agencies	
Department of State Lands	Hydrology/Water Quality and Wetlands
Department of Fish and Wildlife	Wetlands, Threatened and Endangered Species, Fish Passage and Wildlife
Department of Energy	Energy
Department of Environmental Quality	Hydrology/Water Quality, Wetlands, Air Quality, Energy, Hazardous Materials, and Noise and Vibration
Department of Transportation	Hydrology/Water Quality, Wetlands, Traffic, Hazardous Materials, Air Quality, Energy, Geology/Soils, Displacements/Relocations, Highway Improvement Plans, Historic Resources, Noise and Vibration, and Capital Cost Estimates
State Historic Preservation Office	Historic and Archaeological Resources
Department of Geology and Mineral Industries	Geology/Soils
Local/Regional Agencies	
City of Portland, City of Milwaukie, City of Gresham, and Clackamas County	Wetlands, Hydrology/Water Quality, Fish and Wildlife, Land Use and Economic Development, Historic Resources, Displacements/ Relocations, Transportation Plans and Traffic, Noise and Vibration, Visual Resources, Historic and Archaeological Resources, Neighborhoods, and Hazardous Materials

**Table 6.3-1  
Federal, State, and Local Agency Coordination**

Agencies	Topics
TriMet	Capital Costs, Operations and Maintenance Costs, Transit Operating Plans, Transit Facility Design, and Facility and Operation Guidelines

Source: Metro 2010.

Consultation regarding compliance with specific regulatory issues with the U.S. Army Corps of Engineers (USACE), National Oceanic and Atmospheric Administration (NOAA) Fisheries, and the Oregon State Historic Preservation Office (SHPO) is reflected in letters from these agencies, included in Appendix A, Agency Correspondence.

## 6.4 TRIBAL COORDINATION

During the preparation of the FEIS, tribal representatives were contacted before major decision milestones to seek their comments and advice. The tribes contacted are listed above. See Appendix A, Agency Coordination and Correspondence.

## 6.5 PROJECT PERMITS AND APPROVALS

The sections below list the major federal, state, and local permits, programs, and approvals required for the Portland-Milwaukie Light Rail Project. For those permits and approvals not accomplished during the NEPA review, the project will seek intergovernmental agreements to consolidate and simplify permitting and approval, to the extent possible.

## 6.6 FEDERAL PERMITS AND APPROVALS

- National Environmental Policy Act – Federal Transit Administration – FTA
- Executive Order 12898—Environmental Justice – FTA
- Executive Order 11514—Protection and Enhancement of Environmental Quality – FTA
- Executive Order 11593—Protection and Enhancement of the Cultural Environment – FTA, DOI, and Oregon SHPO Executive Order 13007 Protection and Accommodation of Access to “Indian Sacred Sites” – FTA, DOI and Oregon SHPO
- Executive Order 13175 Consultation and Coordination With Indian Tribal Governments
- Executive Order 11990 Protection of Wetlands – FTA, USACE, NMFS
- Executive Order 11988—Floodplain Management – FTA, USACE, NMFS



- National Historic Preservation Act Section 106 – FTA and Oregon SHPO
- Section 4(f) Impact to Historic and Recreation Resources – FTA and U.S. Department of the Interior
- Clean Water Act Section 404 Permit—USACE and Oregon Department of State Lands
- Clean Water Act Section 401 Permit – see Oregon Department of Environmental Quality (DEQ) below
- General Bridge Act of 1946 – U.S. Coast Guard (USCG)
- Section 9 of the Rivers and Harbors Act of 1899 – USCG
- Section 10 of the Rivers and Harbors Act of 1899 – USACE
- Conditional Letter of Map Revision (CLOMR) – Federal Emergency Management Agency
- Federal Endangered Species Act – NOAA Fisheries and U.S. Fish and Wildlife Service (USFWS)
- Magnuson-Stevens Fishery Conservation and Management Act – NOAA Fisheries
- Fish and Wildlife Coordination Act – USFWS
- Migratory Bird Treaty Act – USFWS
- Quiet Zones – Federal Railroad Administration (applied for by cities of Portland and Milwaukie)
- Shared Crossing Waiver – Federal Railroad Administration
- Clean Air Act Amendments Air Quality Conformity – FTA
- Right-of-Way Permit (Interstate) – Federal Highway Administration
- Change of Address – FCC (for Alpha Broadcasting, LLC, for KUFO-FM, KXJM-FM, and KCMD-AM station address change).

## **6.7 STATE OF OREGON PERMITS AND APPROVALS**

- Section 106 Memorandum of Agreement – Oregon SHPO
- Review of Water-Related Permits – Oregon SHPO
- Removal and Fill (404) Permit – Oregon Department of State Lands
- Waterway Structure Registration – Oregon Department of State Lands
- Air Quality Indirect Source Permit – Oregon DEQ

- Section 401 Water Quality Certification – Oregon DEQ
- National Pollutant Discharge Elimination System (NPDES) 1200-A Permit – DEQ
- 1200-C Construction Storm Water Permits NPDES – DEQ
- Underground Injection Control Permit – DEQ
- Guidelines for Timing of In-Water Work – Oregon Department of Fish and Wildlife (ODFW)
- Fish and Wildlife Habitat Mitigation Recommendations – ODFW
- Oregon Endangered Species Act – ODFW
- Scientific Take Permit – ODFW
- Oregon Fish Passage Requirements – ODFW
- Fish Screening or Bypass Requirement – ODFW
- Public Utilities Commission Permits – Oregon Public Utilities Commission
- Interchange Operations Design Permit – ODOT
- Signal Warrants – ODOT
- Right-of-Way Permit – ODOT

## **6.8 LOCAL JURISDICTION PERMITS AND APPROVALS**

### City of Portland

- Environmental Overlay Zone – Bureau of Development Services (BDS)
- Willamette Greenway Overlay Zone – BDS
- Johnson Creek Plan – BDS
- Conditional Use Permit – BDS
- Development Review – BDS
- Design Review – BDS
- Construction within Right-of-Way Permit – Portland Bureau of Transportation (PBOT)
- Public Works Permit – Bureau of Environmental Services
- Building Permits – BDS

- Demolition – BDS
- Signage – BDS
- Electrical, Mechanical, and Plumbing Trade Permits – BDS
- Noise Variance – BDS
- Non-Park Use of Park – Portland Parks and Recreation (PP&R)
- Tree Permits – PP&R

#### City of Milwaukie

- Willamette Greenway – Planning
- Community Service Use – Planning
- Water Quality Resource Overlay – Planning
- Design Review – Planning
- Title 13 Habitat Conservation Areas – Planning
- Title 19 Zoning Variances – Planning
- Annexation – Planning
- Flood Hazard Area Development Permit – Engineering Department
- Building Permit – Building Department
- Grading Permit – Building Department
- Tree Removal / Pruning Permit – Planning Department
- Electrical, Mechanical, and Plumbing Trade Permits – Building Department
- Stormwater Construction Permit – Building Department
- Right-of-Way Permit – Building Department
- Sign Permit – Building Department
- Erosion Permit – Building Department
- Demolition Permit – Building Department

#### Clackamas County

- Development Permit – Department of Transportation and Development

- Building Permits – Department of Transportation and Development
- Design Review

City of Gresham

- Demolition Permit – Community Development
- Building Permit – Community Development
- Grading Fill Permit – Community Development
- Electrical, Mechanical, and Plumbing Trade Permits – Community Development

Metro

- Land Use Final Order