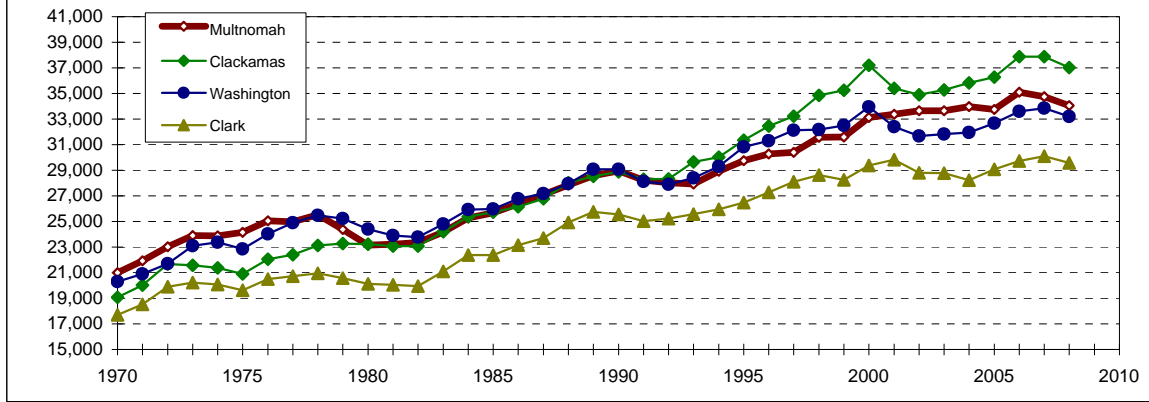


	Portland Region*		Oregon		U.S.	
	Per capita personal income (dollars)	Per capita personal income (2000\$)	Per capita personal income (dollars)	Per capita personal income (2000\$)	Per capita personal income (dollars)	Per capita personal income (2000\$)
1970	4,318	19,855	3,924	18,043	4,084	18,125
1971	4,618	20,700	4,199	18,821	4,340	18,453
1972	5,013	21,864	4,605	20,085	4,717	19,432
1973	5,529	22,618	5,110	20,904	5,230	20,284
1974	6,186	22,557	5,704	20,800	5,708	19,937
1975	6,738	22,412	6,190	20,589	6,172	19,755
1976	7,483	23,361	6,903	21,551	6,754	20,440
1977	8,160	23,573	7,531	21,756	7,402	21,033
1978	9,165	24,055	8,416	22,089	8,243	21,771
1979	10,167	23,496	9,309	21,513	9,138	21,674
1980	11,140	22,734	10,113	20,638	10,091	21,088
1981	12,063	22,596	10,825	20,277	11,209	21,234
1982	12,427	22,565	11,134	20,217	11,901	21,237
1983	13,102	23,527	11,869	21,313	12,583	21,755
1984	14,281	24,721	12,882	22,299	13,807	22,883
1985	15,003	25,021	13,543	22,586	14,637	23,425
1986	15,616	25,683	14,148	23,268	15,338	24,099
1987	16,353	26,240	14,809	23,763	16,137	24,461
1988	17,490	27,135	15,849	24,589	17,244	25,101
1989	18,886	27,913	17,050	25,200	18,402	25,555
1990	20,127	28,124	18,010	25,166	19,354	25,499
1991	20,601	27,368	18,527	24,613	19,818	25,056
1992	21,412	27,245	19,235	24,475	20,799	25,528
1993	22,371	27,512	20,046	24,652	21,385	25,484
1994	23,488	28,070	21,060	25,169	22,297	25,908
1995	24,924	28,951	22,293	25,895	23,262	26,284
1996	26,301	29,510	23,398	26,253	24,442	26,825
1997	27,672	30,017	24,469	26,542	25,654	27,524
1998	28,851	30,724	25,542	27,200	27,258	28,796
1999	29,858	30,783	26,480	27,301	28,333	29,285
2000	32,121	32,121	28,096	28,096	30,318	30,318
2001	33,084	32,277	28,518	27,822	31,145	30,283
2002	32,976	31,935	28,931	28,018	31,462	30,115
2003	33,542	32,047	29,607	28,288	32,271	30,201
2004	34,553	32,175	30,679	28,568	33,881	30,886
2005	35,869	32,566	31,580	28,672	35,424	31,234
2006	38,040	33,661	33,648	29,775	37,698	32,200
2007	39,443	33,655	35,143	29,986	39,392	32,716
2008	39,942	32,999	36,365	30,044	40,166	
2009						
2010						

* Portland-Beaverton-Vancouver, OR-WA PMSA (7 counties)

source: Bureau of Economic Analysis, REIS CA04- Personal income and employment summary

**Per Capita Income by County
(in 2000 dollars)**



	Multnomah		Clackamas		Washington		Clark	
	Per capita personal income (dollars)	Per capita personal income (2000\$)	Per capita personal income (dollars)	Per capita personal income (2000\$)	Per capita personal income (dollars)	Per capita personal income (2000\$)	Per capita personal income (dollars)	Per capita personal income (2000\$)
1970	4,566	20,995	4,146	19,064	4,415	20,301	3,849	17,698
1971	4,894	21,937	4,466	20,018	4,664	20,906	4,134	18,530
1972	5,281	23,033	4,972	21,685	4,975	21,699	4,564	19,906
1973	5,844	23,907	5,273	21,571	5,646	23,097	4,946	20,233
1974	6,544	23,863	5,859	21,365	6,412	23,381	5,502	20,063
1975	7,262	24,155	6,283	20,898	6,871	22,854	5,899	19,621
1976	8,023	25,047	7,061	22,044	7,693	24,017	6,568	20,505
1977	8,643	24,968	7,756	22,406	8,616	24,890	7,175	20,727
1978	9,729	25,535	8,809	23,120	9,703	25,467	7,980	20,945
1979	10,547	24,375	10,070	23,272	10,911	25,216	8,899	20,566
1980	11,339	23,140	11,383	23,229	11,962	24,411	9,867	20,136
1981	12,398	23,223	12,322	23,081	12,756	23,894	10,698	20,039
1982	12,860	23,351	12,714	23,086	13,099	23,785	10,982	19,941
1983	13,465	24,179	13,480	24,206	13,810	24,798	11,754	21,106
1984	14,597	25,268	14,654	25,367	14,976	25,924	12,922	22,368
1985	15,400	25,684	15,427	25,729	15,573	25,972	13,422	22,385
1986	16,033	26,369	15,904	26,156	16,283	26,780	14,070	23,140
1987	16,894	27,108	16,681	26,766	16,942	27,185	14,776	23,710
1988	17,949	27,847	18,070	28,034	18,018	27,954	16,062	24,919
1989	19,342	28,587	19,293	28,515	19,669	29,071	17,420	25,747
1990	20,713	28,943	20,669	28,881	20,810	29,078	18,289	25,556
1991	21,239	28,216	21,307	28,306	21,169	28,123	18,829	25,014
1992	22,017	28,015	22,267	28,333	21,935	27,911	19,829	25,231
1993	22,699	27,915	24,102	29,640	23,086	28,391	20,791	25,568
1994	24,205	28,927	25,130	30,033	24,516	29,299	21,710	25,946
1995	25,606	29,743	26,989	31,349	26,528	30,814	22,797	26,480
1996	26,979	30,271	28,932	32,462	27,890	31,293	24,318	27,285
1997	28,020	30,394	30,633	33,229	29,605	32,113	25,911	28,106
1998	29,639	31,563	32,717	34,841	30,222	32,184	26,869	28,614
1999	30,646	31,596	34,193	35,253	31,535	32,512	27,397	28,246
2000	33,122	33,122	37,212	37,212	33,942	33,942	29,370	29,370
2001	34,200	33,366	36,279	35,394	33,198	32,388	30,560	29,814
2002	34,744	33,647	36,039	34,901	32,706	31,674	29,728	28,790
2003	35,227	33,657	36,926	35,280	33,301	31,817	30,113	28,771
2004	36,484	33,973	38,477	35,829	34,298	31,938	30,317	28,231
2005	37,161	33,739	39,968	36,287	35,991	32,677	32,034	29,084
2006	39,661	35,095	42,805	37,877	37,969	33,598	33,587	29,721
2007	40,720	34,744	44,384	37,871	39,660	33,840	35,266	30,091
2008	41,222	34,057	44,803	37,015	40,188	33,203	35,789	29,568
2009								
2010								

source: Bureau of Economic Analysis, REIS
CA04- Personal income and employment summary