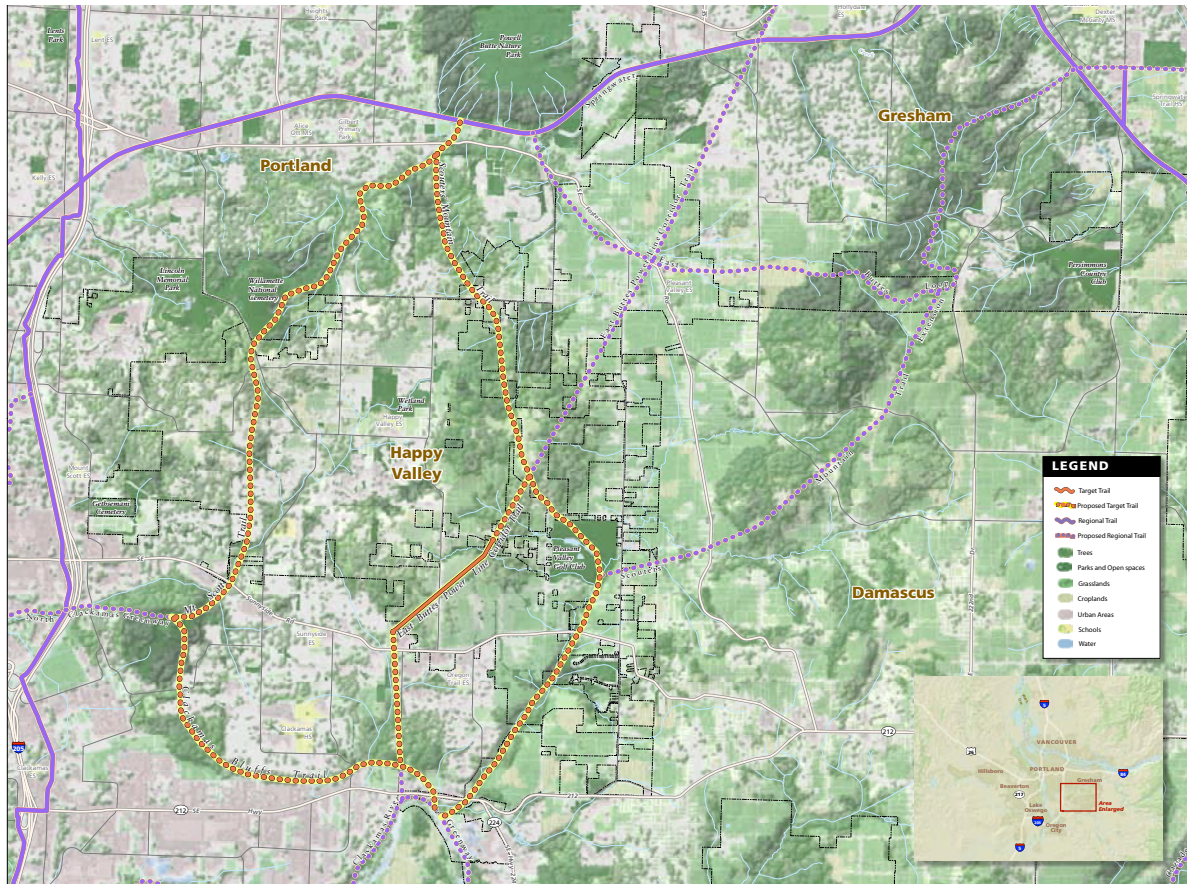


Scouter Mountain/ Mount Scott Loop

Support bicycling and walking as viable transportation and recreation options within a newly emerging population area; connect residents with parks, schools, employment areas and the unique geography of the east buttes.



BENEFITS

- Connect a developing area with the geographically unique buttes and their recreation opportunities including Mount Talbert and Powell Butte nature parks.
- Take advantage of lower land cost and better right-of-way availability before the area develops further.
- Provide connections between the Springwater Corridor and the Clackamas River.
- Provide Clackamas County, Happy Valley, Damascus, Gresham and Portland residents with non-motorized connections to regional destinations and facilities such as Clackamas Town Center, light rail, the Springwater Corridor, Gresham Fairview Trail and Clackamas River Greenway.

PARTNERS

City of Damascus
City of Gresham
City of Happy Valley
City of Portland
Clackamas County
Metro
North Clackamas Parks and Recreation District



15.5 miles+

Connecting Green | Trails