

How did you help plan the Westside Trail?

Open Houses

More than 200 people attended open houses in May and October 2012
250 community members weighed in online and at community meetings.

Project advisory committee

The Westside Trail project advisory committee met five times during the planning of the trail to share information and make recommendations about the proposed route.

Committee members also attended open houses to hear community feedback

Changed options for crossing Bull Mountain May 2012

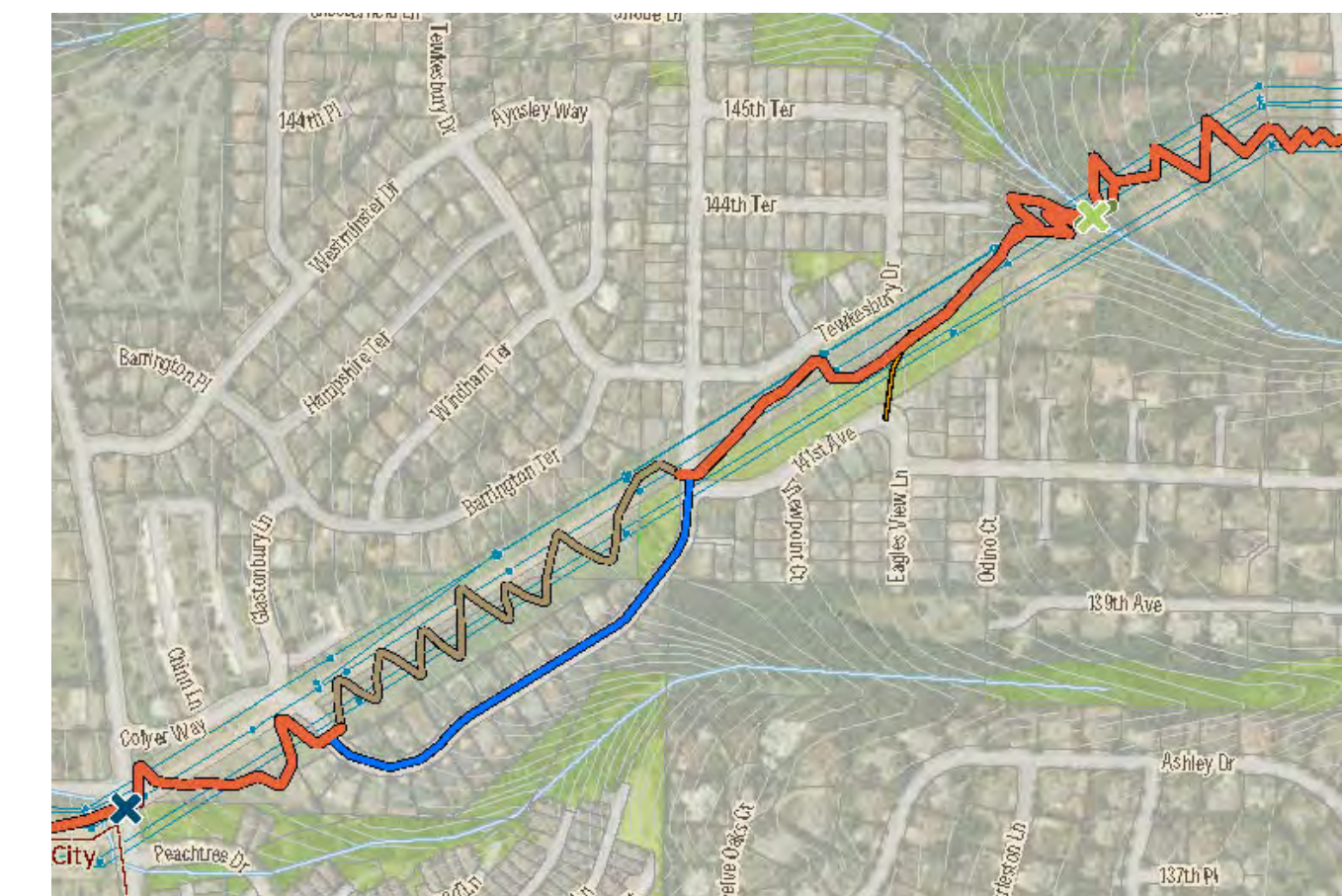
Alignment used numerous switchbacks and one paved route

"It's too steep"
"Too many sharp switchbacks - bicyclists (especially commuters) will not use it"



October 2012

Fewer switchbacks, soft-surface sections, on-street portions and two routes



See the Bull Mountain trail alignment board on display tonight for a full view of the revised option

Simplified the approach to the West Hills October 2012

"The north option has wetlands, an active farm and affects some families"

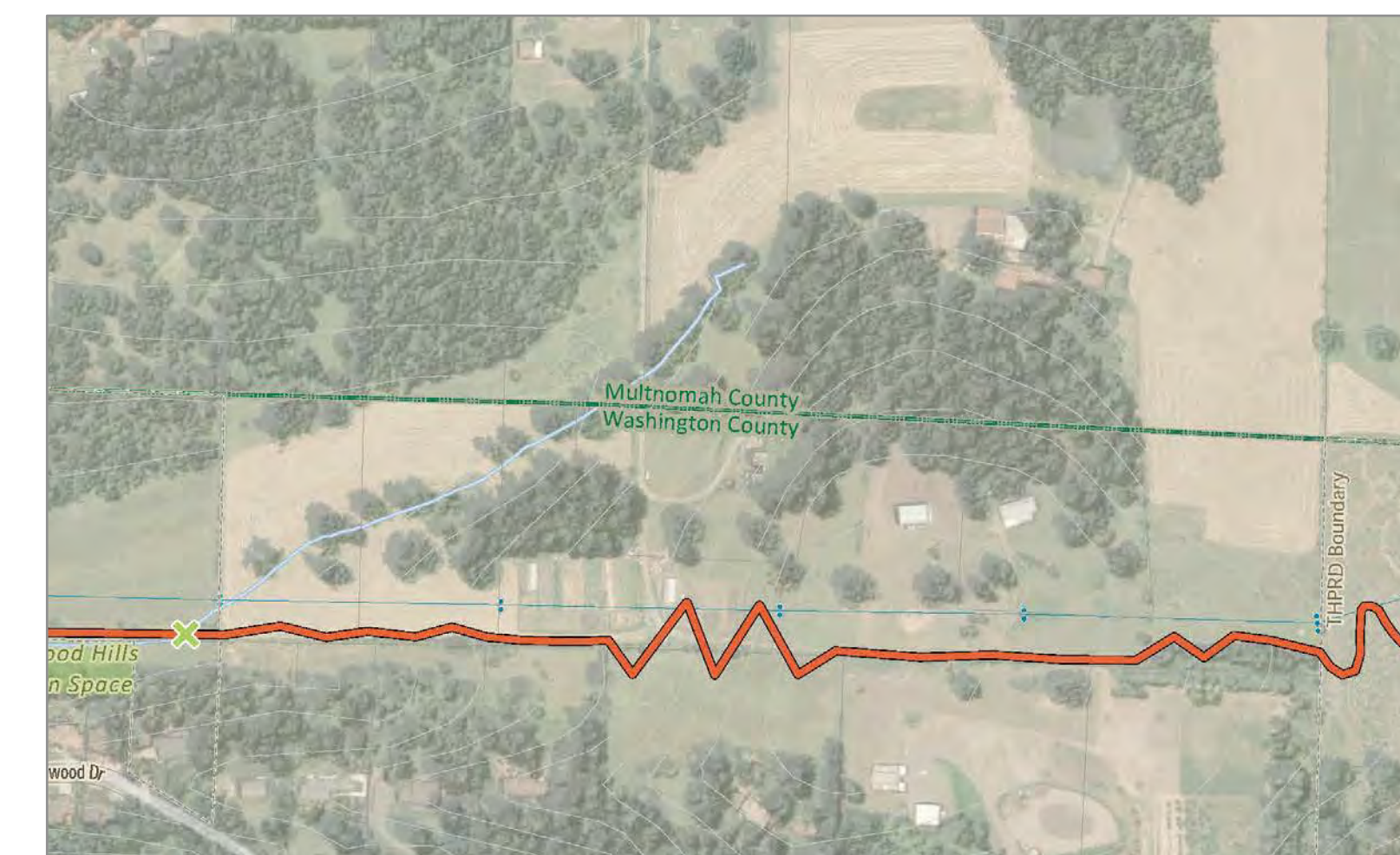
"The north options breaks up productive farmlands"

"The south option is closer to subdivisions and has easy access"



May 2013

Reduces farm impacts and is closer to neighborhoods



The south option was preferred by nearly all meeting attendees.

Although it is steeper, it impacts fewer farmlands.