

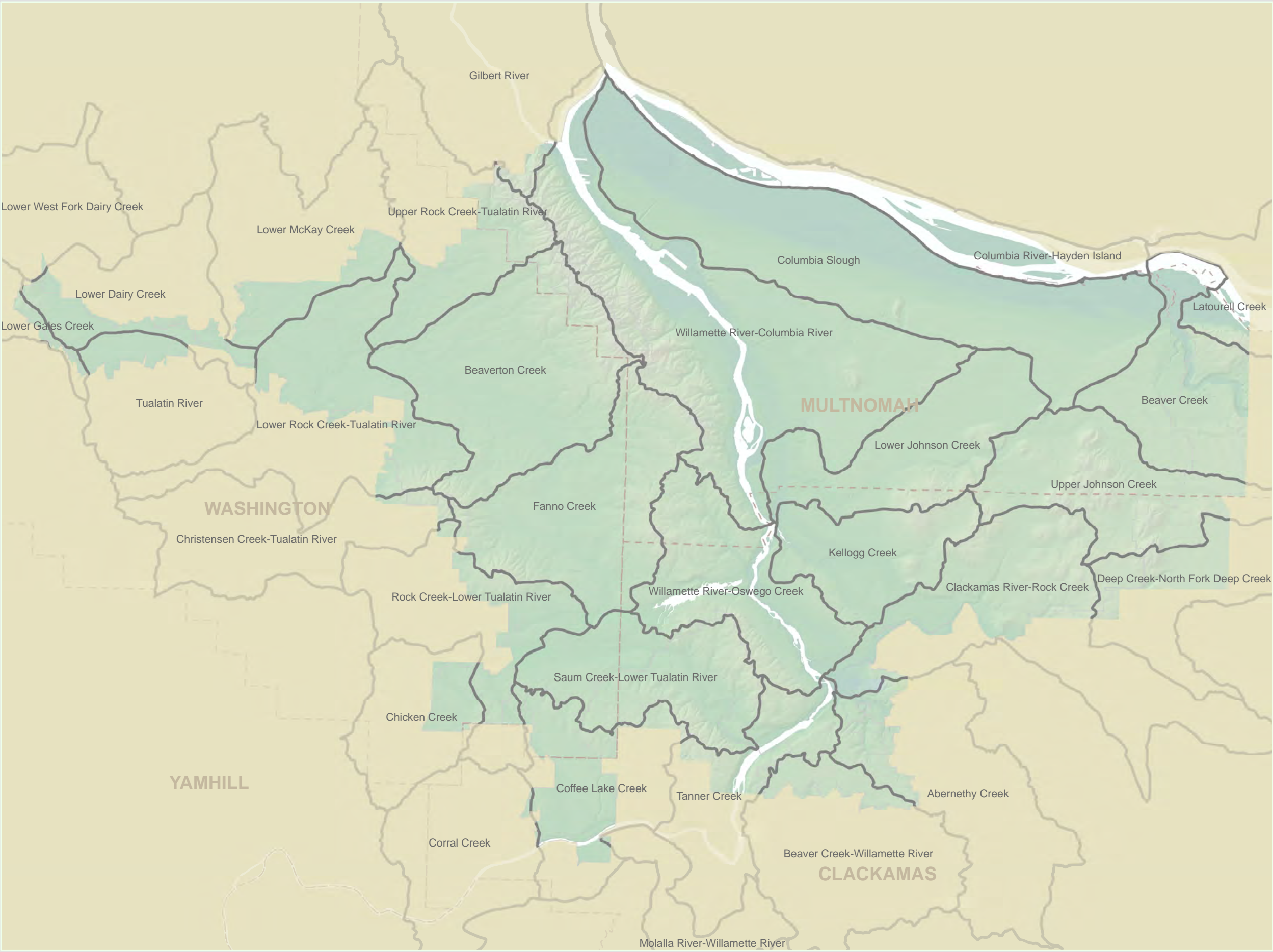


.....

**MAPS**

State of the Watersheds Monitoring Report 2008

- Metro Jurisdiction
- Watershed Boundaries
- Urban Growth Boundary

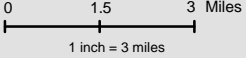


statistics

- Part or all of 31 Sub-watersheds
- Total area of 300,722 acres

The information on this map was derived from digital databases on Metro's GIS. Care was taken in the creation of this map. Metro cannot accept any responsibility for errors, omissions, or positional accuracy. There are no warranties, expressed or implied, including the warranty of merchantability or fitness for a particular purpose, accompanying this product. However, notification of any errors will be appreciated.

METRO DATA RESOURCE CENTER  
600 NORTHEAST GRAND AVENUE | PORTLAND, OREGON 97232-2736  
TEL (503) 797-1579 | www.metro-region.org





Map 2: Vegetation

2007

State of the Watersheds Monitoring Report 2008

- Metro Jurisdiction
- Watershed Boundaries
- Urban Growth Boundary

Vegetation Cover 2007

- No Data
- Vegetation Class
  - Trees
  - Shrubs or Grassland
  - Other

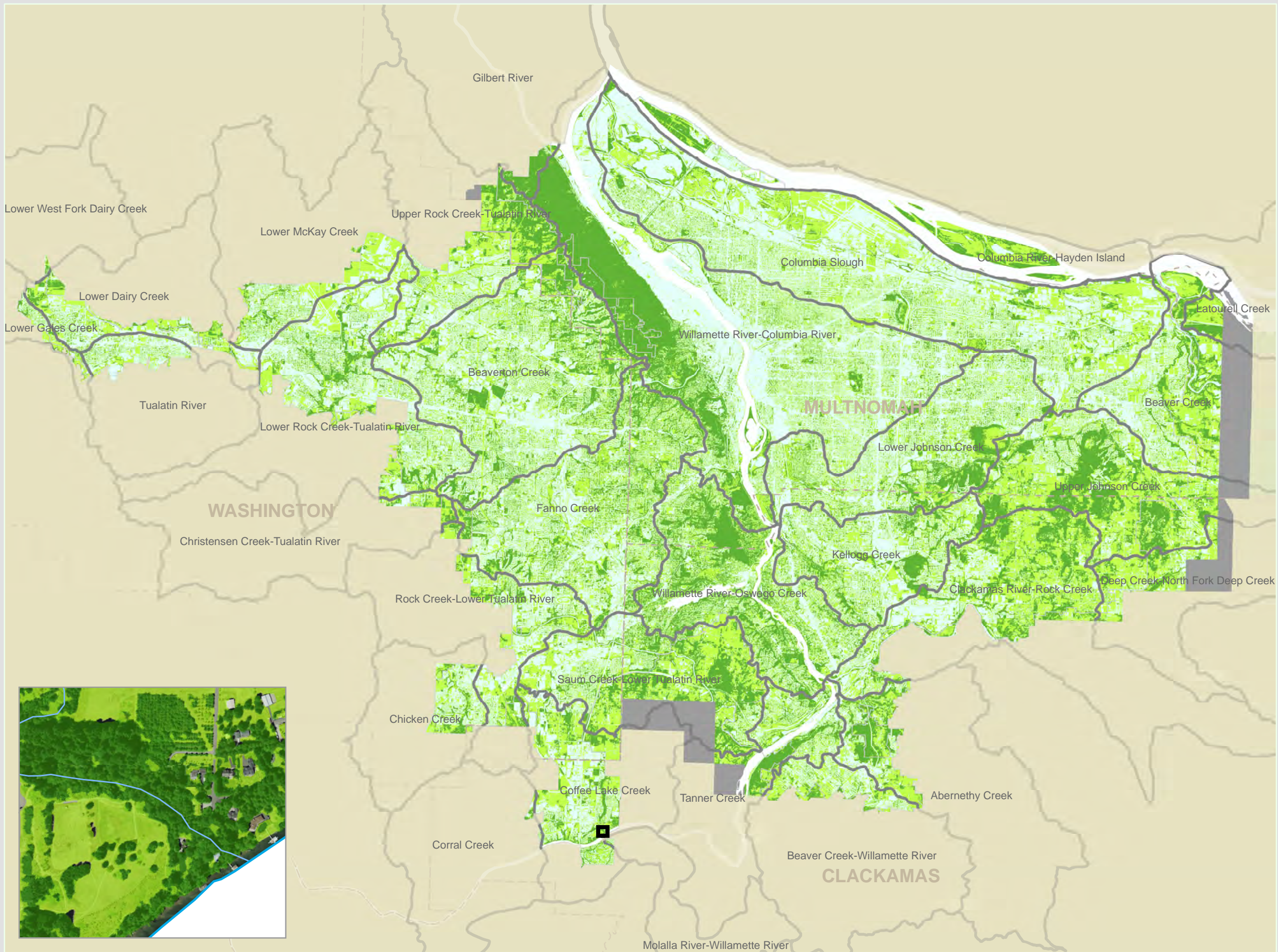
statistics

- Metro Region is 59.8% vegetated
- 88,890 acres of trees (30.5% of region)
- 85,405 acres of other vegetation (29.3% of region)

The information on this map was derived from digital databases on Metro's GIS. Care was taken in the creation of this map. Metro cannot accept any responsibility for errors, omissions, or positional accuracy. There are no warranties, expressed or implied, including the warranty of merchantability or fitness for a particular purpose, accompanying this product. However, notification of any errors will be appreciated.

METRO DATA RESOURCE CENTER  
600 NORTHEAST GRAND AVENUE | PORTLAND, OREGON 97232-2736  
TEL (503) 797-1579 | www.metro-region.org

0 1.5 3 Miles  
1 inch = 3 miles





State of the Watersheds Monitoring Report 2008

- Metro Jurisdiction
- Watershed Boundaries

2005 Habitat Inventory

Habitat Classes

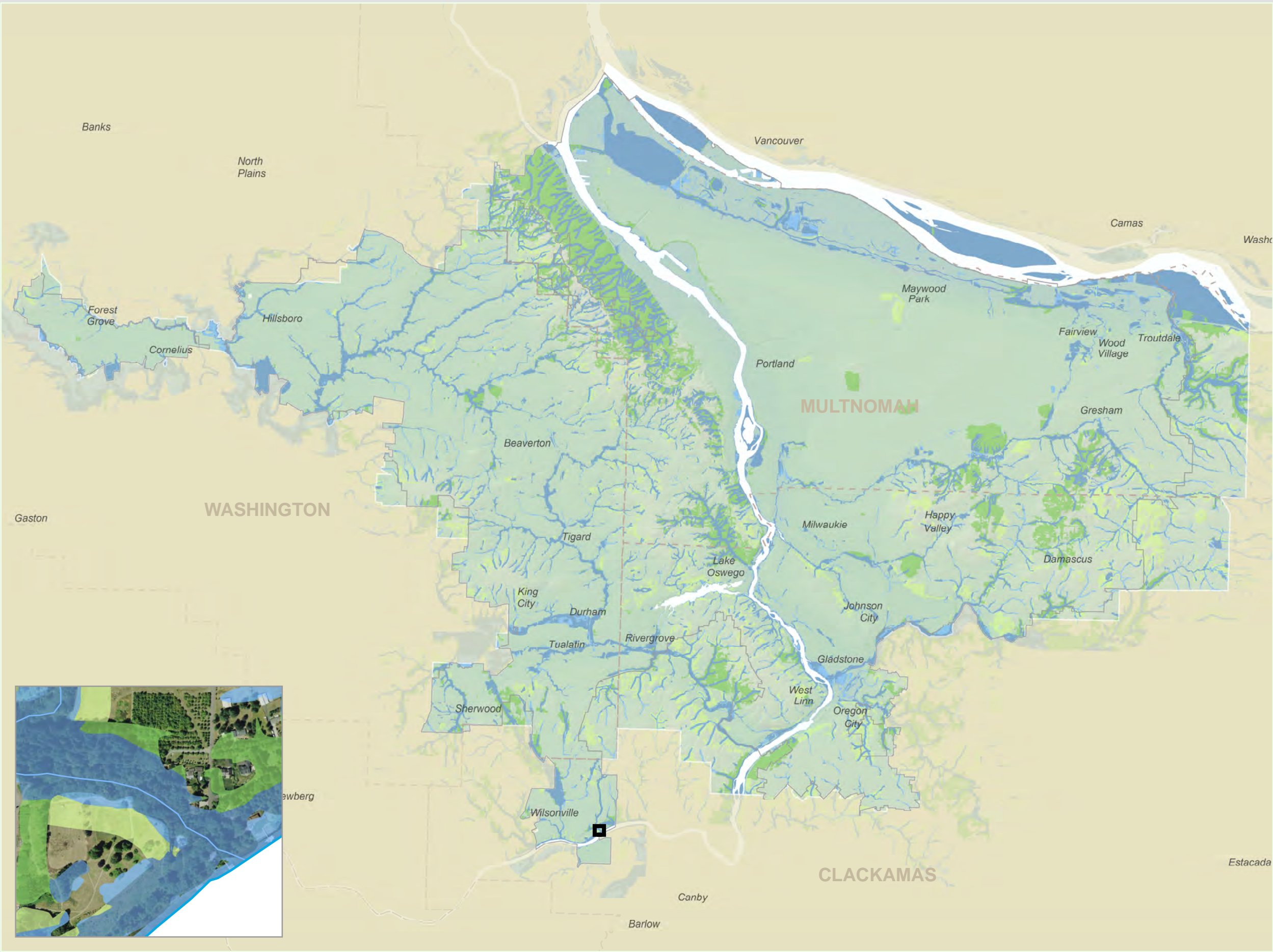
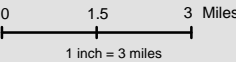
- Riparian Class I
- Riparian Class II
- Upland Class A
- Upland Class B

statistics

- The Metro area includes 25 cities and the urban portion of 3 counties
- Riparian I & II: 18.6% of Metro region (56k acres)
- Upland A & B: 9.9% of Metro region (30k acres)

The information on this map was derived from digital databases on Metro's GIS. Care was taken in the creation of this map. Metro cannot accept any responsibility for errors, omissions, or positional accuracy. There are no warranties, expressed or implied, including the warranty of merchantability or fitness for a particular purpose, accompanying this product. However, notification of any errors will be appreciated.

METRO DATA RESOURCE CENTER  
600 NORTHEAST GRAND AVENUE | PORTLAND, OREGON 97232-2736  
TEL (503) 797-1579 | www.metro-region.org





Map 4: Habitats of Concern

2005 - 2007

State of the Watersheds Monitoring Report 2008

- Metro Jurisdiction
- Watershed Boundaries

Habitats of Concern

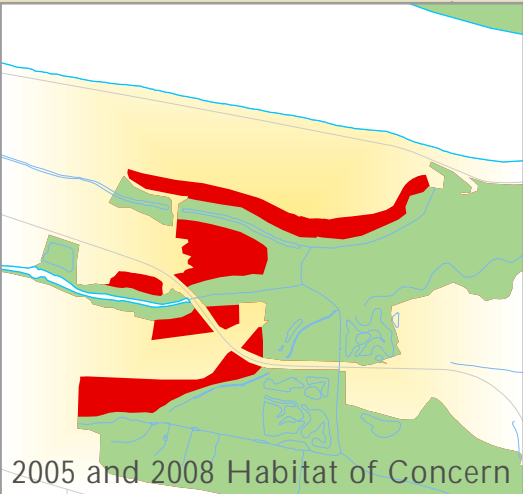
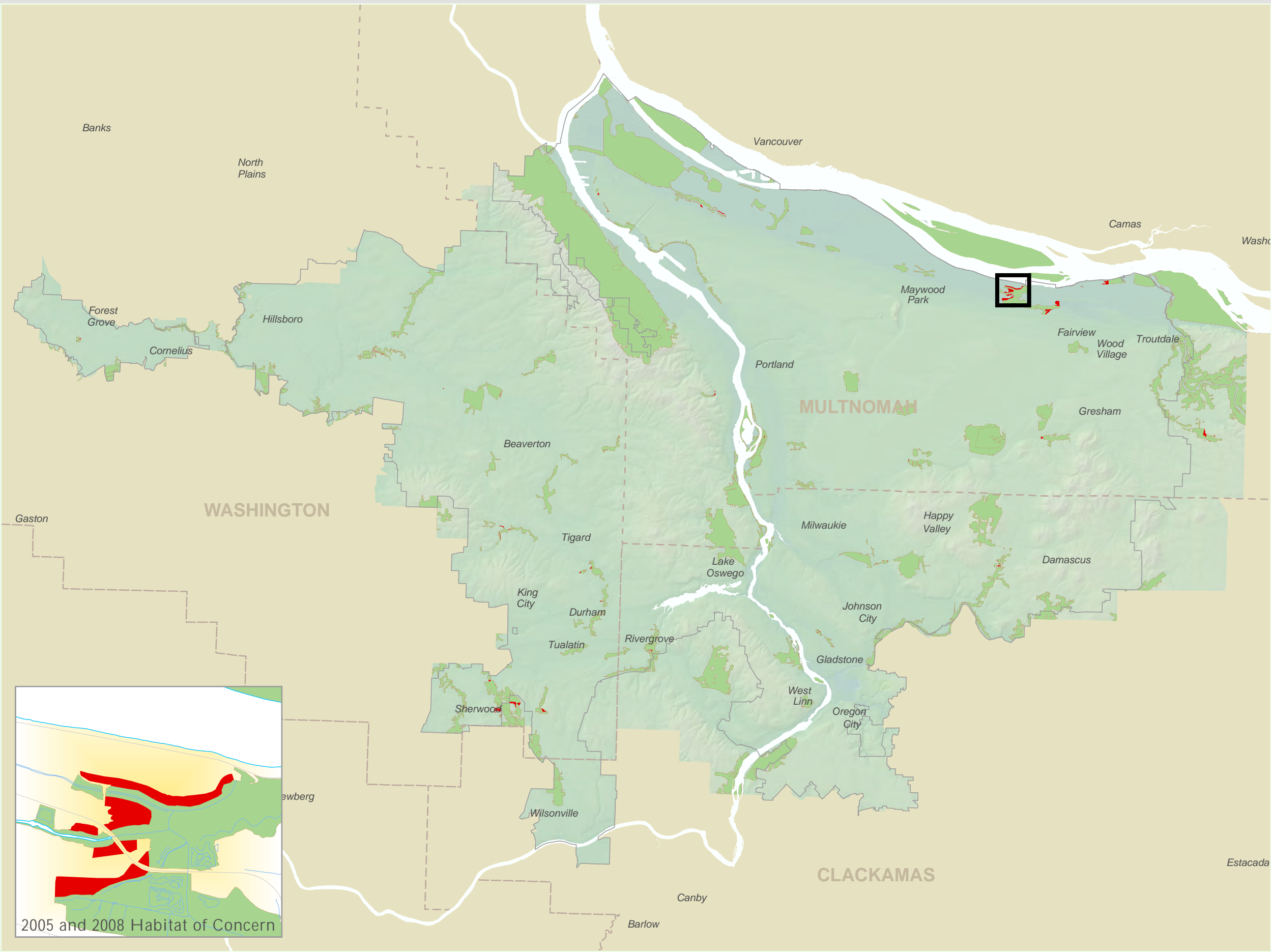
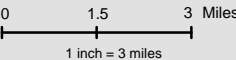
- Intact in 2007
- Disturbed Since 2005

statistics

- Typically floodplain, native oak, wetlands, bottomland hardwood, native prairie
- 2007 acres: 26,675
- 2005-2007: 0.7% loss (181 acres)

The information on this map was derived from digital databases on Metro's GIS. Care was taken in the creation of this map. Metro cannot accept any responsibility for errors, omissions, or positional accuracy. There are no warranties, expressed or implied, including the warranty of merchantability or fitness for a particular purpose, accompanying this product. However, notification of any errors will be appreciated.

METRO DATA RESOURCE CENTER  
600 NORTHEAST GRAND AVENUE | PORTLAND, OREGON 97232-2736  
TEL (503) 797-1579 | www.metro-region.org



State of the Watersheds Monitoring Report 2008

- Metro Jurisdiction
- Watershed Boundaries

Water Quality By Reach

- No Data
- 19-23 - High (n=374)
- 15-18 (n=347)
- 11-14 (n=214)
- 7-10 (n=71)
- 3-6 - Low (n=8)

statistics

The information on this map was derived from digital databases on Metro's GIS. Care was taken in the creation of this map. Metro cannot accept any responsibility for errors, omissions, or positional accuracy. There are no warranties, expressed or implied, including the warranty of merchantability or fitness for a particular purpose, accompanying this product. However, notification of any errors will be appreciated.

METRO DATA RESOURCE CENTER  
600 NORTHEAST GRAND AVENUE | PORTLAND, OREGON 97232-2736  
TEL (503) 797-1579 | www.metro-region.org

